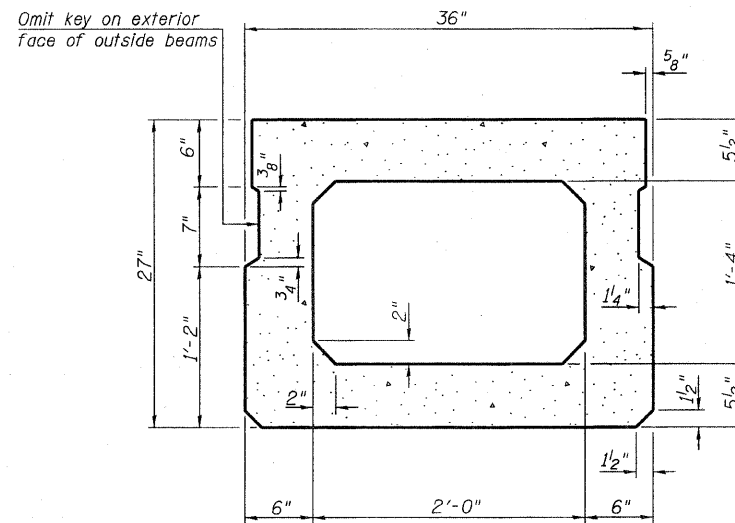
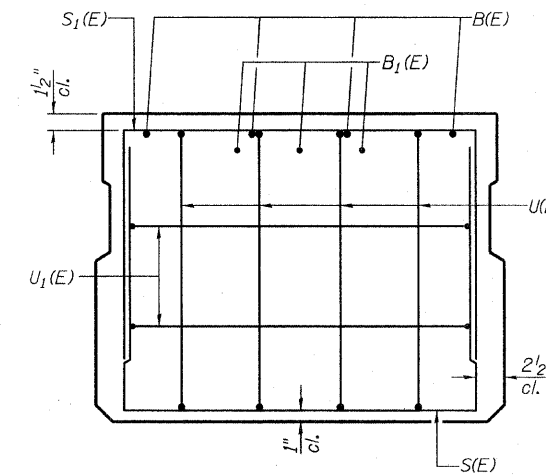


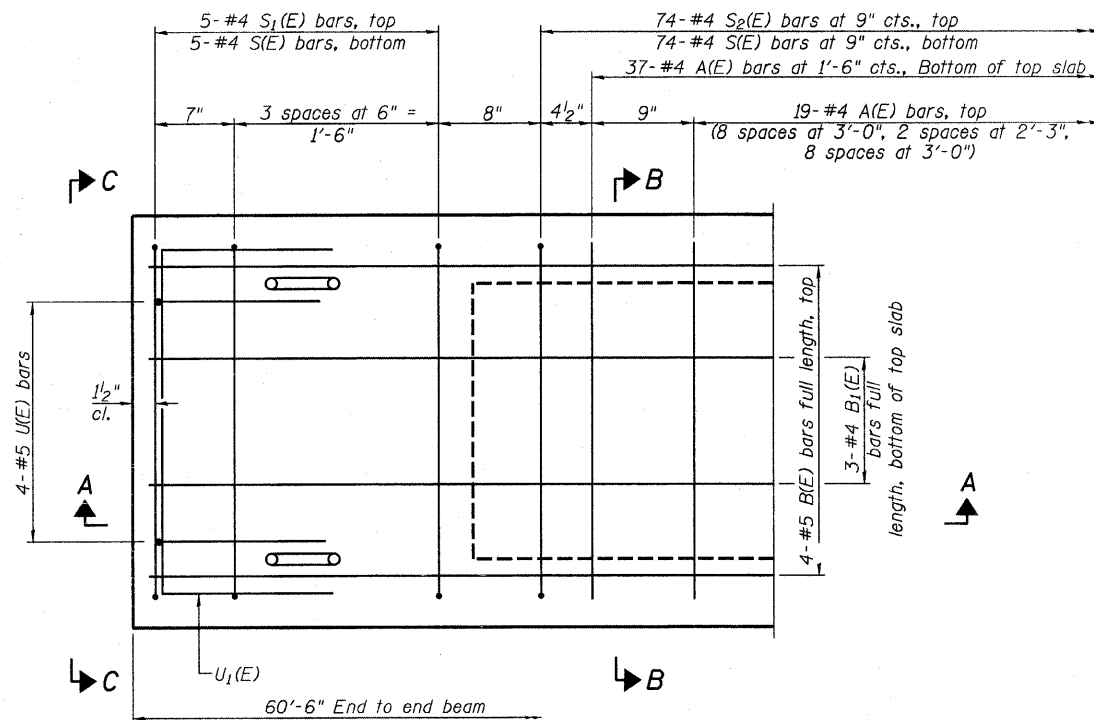
SECTION A-A



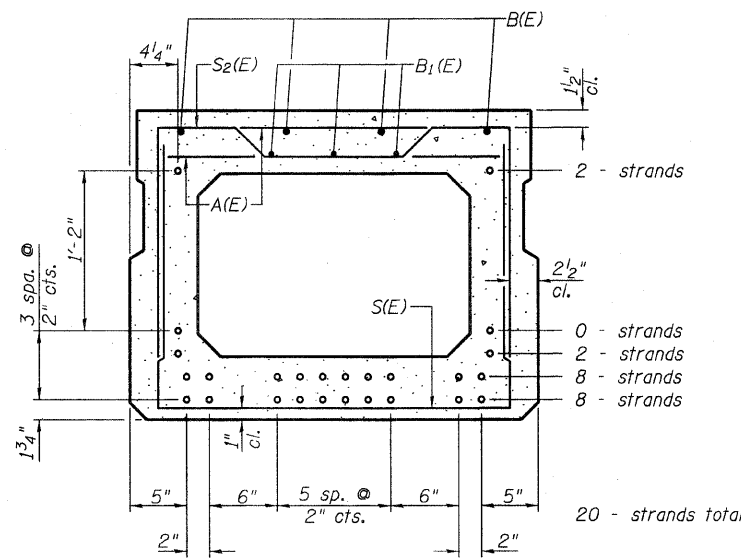
SECTION B-B
(Showing dimensions)



VIEW C-C



PLAN VIEW



SECTION B-B
(Showing reinforcement and permissible strand locations)
Note: Place the number of strands specified in each row symmetrically about the centerline of beam in the permissible strand locations shown.

BAR LIST
ONE BEAM ONLY
(For information only)

Bar	No.	Size	Length	Shape
A(E)	55	#4	2'-7"	—
B(E)	8	#5	31'-4"	—
B1(E)	9	#4	21'-5"	—
S(E)	84	#4	6'-5"	U
S1(E)	10	#4	5'-11"	U
S2(E)	74	#4	6'-2"	U
U(E)	8	#5	4'-6"	C
U1(E)	4	#4	5'-0"	C

Note: See Sheet 6 of 11 for additional details and Bill of Material.

MINIMUM BAR LAP

#4 bar = 2'-0"
#5 bar = 2'-6"

Note: Spacing of S(E) and S2(E) bars may be adjusted up to 4" in the immediate area of the transverse tie diaphragms to miss the block outs for the transverse ties.

02/10/2012 RAAI #51508

RHUTASEL and ASSOCIATES, INC.
CONSULTING ENGINEERS • LAND SURVEYORS
CENTRALIA, ILLINOIS FREEBURG, ILLINOIS
ILLINOIS DESIGN FIRM LICENSE NO. 184-000287

DESIGNED -	GLH	REVISED -	
DRAWN -	JN	REVISED -	
CHECKED -	GLH	REVISED -	
DATE -	02/10/2012	REVISED -	

STATE OF ILLINOIS
DEPARTMENT OF TRANSPORTATION

PRECAST PRESTRESSED CONCRETE DECK BEAM DETAILS
STRUCTURE NO. 061-3314

ROUTE	SECTION	COUNTY	TOTAL SHEETS	SHEET NO.
TR 304A	09-07116-00-BR	MARION	11	5
CONTRACT NO. 97491				
ILLINOIS FED. AID PROJECT				