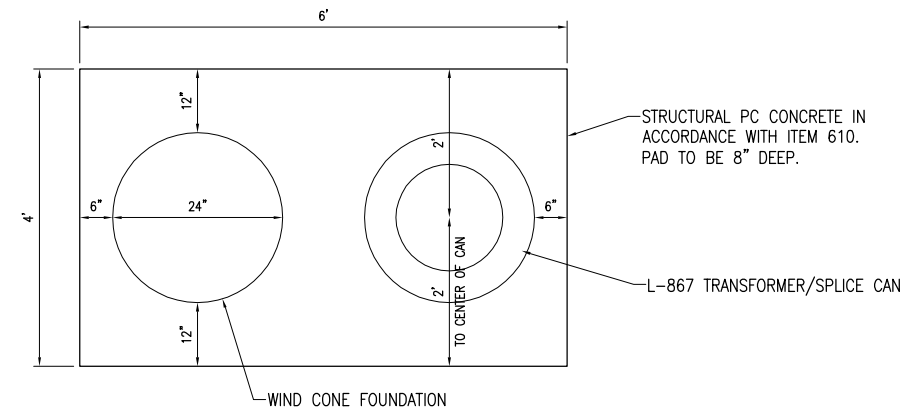
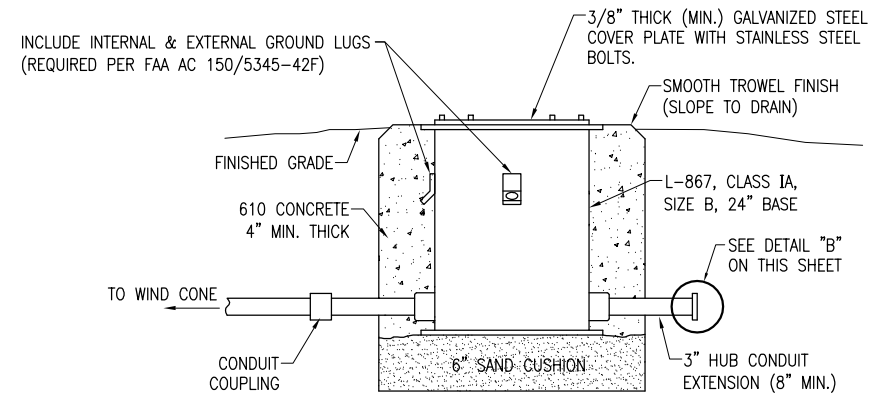


DETAIL "B"
(NOT TO SCALE)

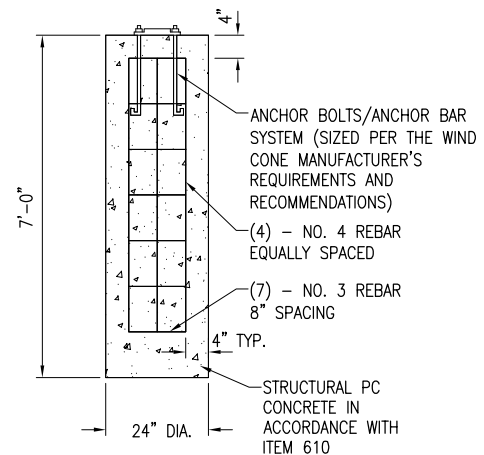


CONCRETE PAD PLAN VIEW
(NOT TO SCALE)



TRANSFORMER/SPLICE CAN DETAIL
(NOT TO SCALE)

- NOTES:**
1. INCLUDE INTERNAL AND EXTERNAL GROUND LUGS.
 2. L-867 CAN FOR WIND CONE SHALL HAVE 2" HUB AT 0°, AND 3" HUB AT 180°. L-867 CAN WITH 2" HUB AT 0°, 2" HUB AT 90°, 2" HUB AT 180° IS ALSO ACCEPTABLE.



FOUNDATION DETAIL
"NOT TO SCALE"

NOTES

1. WIND CONE SHALL INCLUDE CONSTANT-BRIGHTNESS SERIES CIRCUIT POWER ADAPTER.
2. THE RUNWAY LIGHTING SERIES CIRCUIT IS POWERED BY AN L-828 CLASS 1 - 6.6 AMP OUTPUT CURRENT, STYLE 1-3 BRIGHTNESS STEPS CONSTANT CURRENT REGULATOR. COORDINATE WITH THE RESPECTIVE WIND CONE MANUFACTURER TO PROVIDE A COMPATIBLE AND PROPERLY SIZED SERIES ISOLATION TRANSFORMER.
3. THE EXISTING CONSTANT CURRENT REGULATOR POWERING THE SERIES CIRCUIT FOR THE WIND CONE HAS BEEN SIZED FOR THE RESPECTIVE RUNWAY LIGHTING LOADS AND A WIND CONE THAT HAS A LOAD OF LESS THAN 200VA AND DOES NOT REQUIRE A SERIES ISOLATION TRANSFORMER LARGER THAN A 300 WATT RATING. IN THE EVENT THAT A WIND CONE IS PROPOSED THAT EXCEEDS THIS RATING, THE CONTRACTOR SHALL BE RESPONSIBLE TO ENSURE THAT THE RESPECTIVE CONSTANT CURRENT REGULATOR IS PROPERLY SIZED FOR THE TOTAL SERIES CIRCUIT LOAD. WHERE A WIND CONE IS PROPOSED THAT REQUIRES LOADS THAT EXCEED THE RATING OF THE RESPECTIVE CONSTANT CURRENT REGULATOR, THE CONTRACTOR SHALL BE RESPONSIBLE FOR ALL ADJUSTMENTS INCLUDING PROVIDING A LARGER CONSTANT CURRENT REGULATOR AND ALL ASSOCIATED CIRCUIT BREAKERS, CONDUITS, WIRING AND VAULT WORK AS APPLICABLE TO ACCOMMODATE THE RESPECTIVE SERIES CIRCUIT LOAD WITH THE WIND CONE.
4. L-807 OR L-807(L) WIND CONE WILL BE PAID FOR UNDER ITEM AR107812 L-807 WC-12' INTERNALLY LIT PER EACH. SPLICE CANS FOR WIND CONE SERIES CIRCUIT TRANSFORMER WILL BE INCIDENTAL TO THE RESPECTIVE WIND CONE PAY ITEM.
5. REBAR SHALL BE MANUFACTURED FROM 100% DOMESTIC STEEL. INCLUDE CERTIFICATION OF 100% DOMESTIC STEEL WITH SHOP DRAWING SUBMITTAL.

INTERNALLY LIGHTED L-807 WIND CONE
"NOT TO SCALE"

REVISION	DATE	UPDATE PER
1	03/09/12	PER FAA PGL 12-2 & EB67D

JOLIET REGIONAL AIRPORT
JOLIET PARK DISTRICT
JOLIET, ILLINOIS

A.I.P. PROJ.: 3-17-0066-B8
I.L. PROJ.: JOT-4166

Hanson Project No.	09A0177D-0001	LAYOUT	KNL	01/13/12
Filename	E-505-DET.dwg	DRAWN	MLH	01/24/12
Scale	NONE	REVIEWED	KNL/CAH	02/13/12
Date	02/13/12			

HANSON

Copyright Hanson Professional Services Inc. 2012
Hanson Professional Services Inc.
1525 S. State St.
Springfield, Illinois 62703-2886

L-807 WIND CONE
ELEVATION DETAIL

CONSTRUCT A STAND ALONE
ELECTRICAL VAULT, REPLACE RUNWAY
LIGHTS AND INSTALL TAXIWAY LIGHTS

MAR 12, 2012 2:03 PM KINC00394
pw:\sps-wr0306.hanson.com\Hanson Projects\Documents\09A0177D\09A0177D\CA0\Work\Sheet\E-505-DET