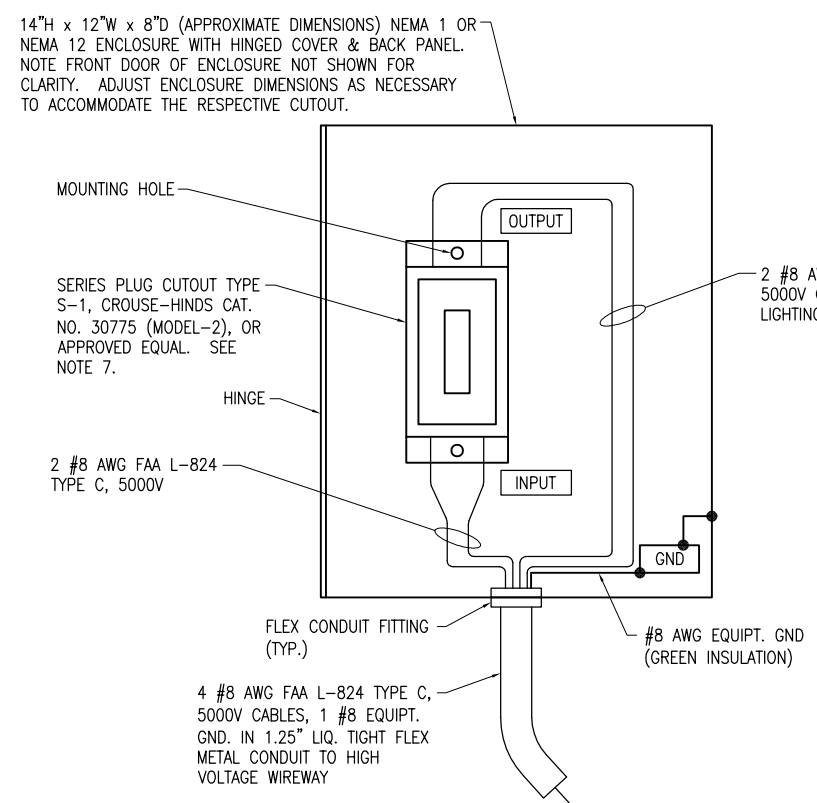
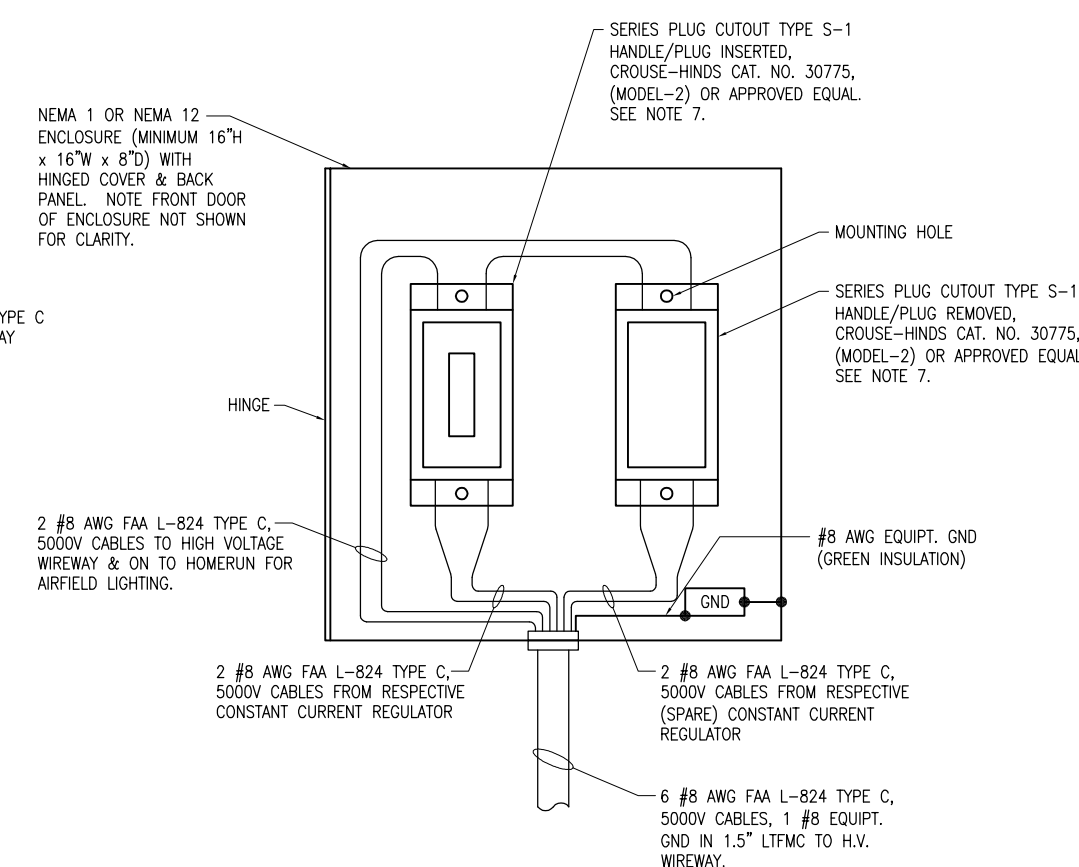


HIGH VOLTAGE WIRING SCHEMATIC



SERIES PLUG CUTOUT MOUNTING DETAIL FOR TAXIWAY CIRCUIT
NOT TO SCALE



SERIES PLUG CUTOUT MOUNTING DETAIL FOR RUNWAY CIRCUIT
NOT TO SCALE

- NOTES**
1. PROVIDE PHENOLIC ENGRAVED LEGEND PLATES FOR EACH CONSTANT CURRENT REGULATOR (EXISTING & NEW) NOTING THE RUNWAY AND/OR TAXIWAY SERVED.
 2. EACH PLUG CUTOUT CABINET SHALL BE FURNISHED WITH A PHENOLIC ENGRAVED LEGEND PLATE THAT IDENTIFIES THE RESPECTIVE RUNWAY OR TAXIWAY CIRCUIT OR REGULATOR. INCLUDE AN ADDITIONAL LEGEND PLATE LABELED "CAUTION OPERATE CUTOUTS WITH CCR SHUT OFF".
 3. PROVIDE PHENOLIC ENGRAVED LEGEND PLATES FOR THE CUTOUTS TO IDENTIFY THE RESPECTIVE REGULATOR OUTPUT CONNECTION AND THE RESPECTIVE CIRCUIT LOAD CONNECTION.
 4. BOND REGULATOR FRAME TO VAULT GROUND BUS WITH A DEDICATED #6 AWG BONDING JUMPER.
 5. PROVIDE ADEQUATE WORKING SPACE IN FRONT OF EACH CUTOUT ENCLOSURE TO MEET NEC CLEARANCE REQUIREMENTS.
 6. LIQUID TIGHT FLEXIBLE METAL CONDUIT AND ASSOCIATED FITTINGS SHALL BE U.L. LISTED TO MEET THE REQUIREMENTS OF NEC 350.6, SUITABLE FOR GROUNDING AND SUNLIGHT RESISTANT. LIQUID TIGHT FLEXIBLE METAL CONDUIT THAT IS USED FOR FLEXIBILITY (INCLUDING CONNECTIONS TO CCR'S & TRANSFORMERS) SHALL REQUIRE AN EXTERNAL BONDING JUMPER OR INTERNAL EQUIPMENT GROUNDING CONDUCTOR PER NEC 350.60. EXTERNAL BONDING JUMPERS USED WITH CCR INSTALLATIONS SHALL BE #6 AWG COPPER (MINIMUM). DO NOT INSTALL LIQUID TIGHT FLEXIBLE METAL CONDUIT THAT IS NOT UL LISTED. CONFIRM LIQUID TIGHT FLEXIBLE METAL CONDUIT BEARS THE UL LABEL PRIOR TO INSTALLING IT.
 7. SERIES PLUG CUTOUTS SHALL BE TYPE S-1, RATED 5000 VOLTS, 20-AMP, AND SHALL COMPLY WITH FAA AC 150/5340-4C. SERIES PLUG CUTOUTS SHALL BE RATED SUITABLE FOR NORMAL OPERATION WITH HANDLE REMOVED OR HANDLE INSERTED. CUTOUTS SHALL DISCONNECT THE INPUT FROM THE FROM THE OUTPUT, SHORT THE INPUT TERMINALS, AND SHORT THE OUTPUT TERMINALS WHEN THE HANDLE/PLUG IS REMOVED. CUTOUTS SHALL BE SUITABLE FOR MANUAL TRANSFER OPERATION (ONE SERIES CIRCUIT LOOP WITH THE CAPABILITY OF BEING POWERED FROM EITHER OF TWO CONSTANT CURRENT REGULATOR POWER SOURCES). SERIES PLUG CUTOUTS SHALL BE CROUSE-HINDS CAT. NO. 30775, OR APPROVED EQUAL. THE RESPECTIVE MANUFACTURER SHALL CERTIFY IN WRITING THAT THEIR CUTOUT IS SUITABLE AND RATED FOR THE RESPECTIVE APPLICATION.
 8. HIGH VOLTAGE & LOW VOLTAGE CIRCUITS SHALL NOT BE INSTALLED IN THE SAME WIREWAY.
- LEGEND**
- "I" DENOTES PLUG CUTOUT WITH PLUG INSERTED
 - "P" DENOTES PLUG CUTOUT WITH PLUG PULLED
 - "CCR" DENOTES CONSTANT CURRENT REGULATOR

REVISION	
DATE	
JOLIET REGIONAL AIRPORT JOLIET PARK DISTRICT JOLIET, ILLINOIS	
A.I.P. PROJ.: 3-17-0066-B8	
ILL. PROJ.: JOT-4166	
Hanson Project No. 09A0177D-0001	LAYOUT KNL 01/13/12
Filename E-606-SCM.dwg	DRAWN MLH 01/30/12
Scale NONE	REVIEWED KNL/CAH 02/13/12
Date 02/13/12	
HANSON	
<small>© Copyright Hanson Professional Services Inc. 2012 Hanson Professional Services Inc. 1525 S. State Street Springfield, Illinois 62703-2886</small>	
HIGH VOLTAGE WIRING SCHEMATIC	
CONSTRUCT A STAND ALONE ELECTRICAL VAULT, REPLACE RUNWAY LIGHTS AND INSTALL TAXIWAY LIGHTS	
34	
34 of 38 sheets	

MAR 12, 2012 2:51 PM KINC00394 pw:\sps-sv306\hanson\Documents\09A0177D\09A0177D(CAD)\Work\Sheet\E-606-SCM