

CONSTRUCTION PLANS FOR

PITTSFIELD PENNSTONE MUNICIPAL AIRPORT

PITTSFIELD, PIKE COUNTY, ILLINOIS

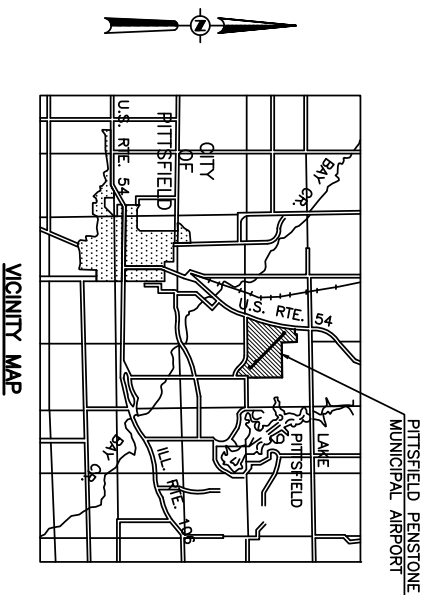
EXPAND THE APRON

ILLINOIS PROJECT NO. PPQ-4082
AIP PROJECT NO. 3-17-0081-B14

MARCH 23, 2012

SUMMARY OF QUANTITIES

ITEM NO.	DESCRIPTION	UNIT	AS BID QUANTITY	AS BUILT QUANTITY
AR152410	UNCLASSIFIED EXCAVATION	CU. YD	2,513	
AR156512	BALES	EACH	14	
AR401613	BIT. SURF. CSE.-METHOD 1, SUPERPAVE	TON	842	
AR401655	BUTT JOINT CONSTRUCTION	SQ. YD.	145	
AR401901	REMOVE BITUMINOUS SURFACE COURSE	SQ. YD.	426	
AR403613	BIT. BASE CSE.-METHOD 1, SUPERPAVE	TON	1,609	
AR510510	TIE DOWN	EACH	33	
AR603510	BITUMINOUS TACK COAT	GAL.	446	
AR620520	PAVEMENT MARKING-WATERBORNE	SQ. FT.	511	
AR620900	PAVEMENT MARKING REMOVAL	SQ. FT.	56	
AR901510	SEEDING	ACRE	0.6	
AR908510	MULCHING	ACRE	0.6	



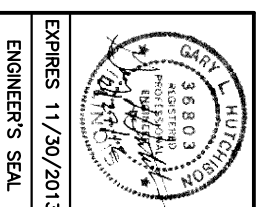
NO.	DESCRIPTION
1	COVER SHEET
2	IMPROVEMENT AND SAFETY PLAN
3	TYPICAL SECTION AND SPECIAL DETAILS
4	APRON LAYOUT AND STAKING PLAN
5	TIEDOWN AND MARKING LAYOUT AND DETAILS
6-7	APRON CROSS SECTIONS
8	EROSION CONTROL PLAN

INDEX TO SHEETS

PLANS PREPARED BY :

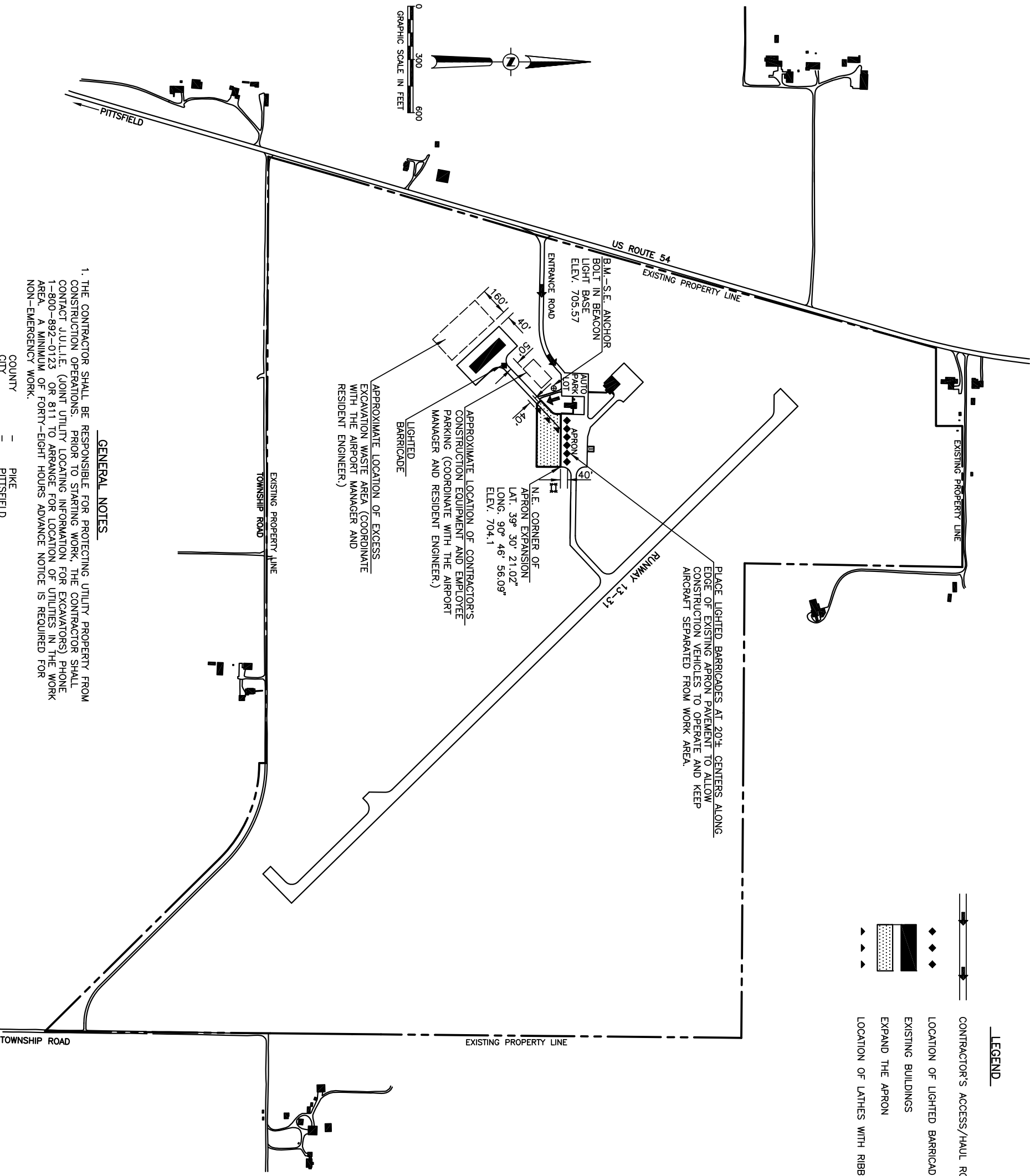
HUTCHISON ENGINEERING, INC.
JACKSONVILLE, ILLINOIS

CITY OF PITTSFIELD, ILLINOIS



SUBMITTED *[Signature]*
DATE *February 27, 2012*

APPROVED *[Signature]* MAYOR
DATE *3-1-12*
APPROVED *[Signature]* CITY CLERK
DATE *03-01-12*



LEGEND

- CONTRACTOR'S ACCESS/HAUL ROUTE
- LOCATION OF LIGHTED BARRICADES
- EXISTING BUILDINGS
- EXPAND THE APRON
- LOCATION OF LATHES WITH RIBBON FLAGGING

CONSTRUCTION PROCEDURE NOTES

1. ALL CONTRACTOR EMPLOYEES WILL PARK THEIR PERSONAL VEHICLES IN THE AREA DESIGNATED IN THESE PLANS FOR USE AS A VEHICLE PARKING AREA. ONLY AUTHORIZED CONTRACTOR VEHICLES WILL BE ALLOWED ON THE AIR OPERATIONS AREA OF THE AIRPORT AND ON THE CONSTRUCTION SITE.
2. FLAGS WILL BE REQUIRED ON ALL CONTRACTOR'S VEHICLES AND EQUIPMENT. THE FLAGS SHALL BE THREE (3) FOOT SQUARE CHECKERED FLAGS (INTERNATIONAL ORANGE AND WHITE) DISPLAYED IN FULL VIEW ABOVE THE VEHICLE.
3. THE CONTRACTOR WILL USE THE DESIGNATED HAUL ROUTE AND EQUIPMENT STORAGE AREA SHOWN ON THIS SHEET. IT WILL BE THE CONTRACTOR'S RESPONSIBILITY TO MAINTAIN THE DESIGNATED HAUL ROUTE AND EQUIPMENT STORAGE AREA FOR THE DURATION OF THE PROJECT. ANY DAMAGE TO EXISTING PAVEMENTS USED TO HAUL MATERIAL TO THE CONSTRUCTION SITE WILL BE REPAIRED BY THE CONTRACTOR AT HIS OWN EXPENSE TO THE SATISFACTION OF THE AIRPORT MANAGER AND RESIDENT ENGINEER.
4. LIGHTED BARRICADES WILL BE PLACED NEXT TO ANY OPEN EXCAVATION THAT IS ADJACENT TO A PAVEMENT BEING UTILIZED BY AIRCRAFT OR GROUND VEHICLES. BARRICADES WILL BE EQUIPPED WITH RED FLASHING LIGHTS.
5. THE CONTRACTOR SHALL FURNISH, MAINTAIN, AND REMOVE ALL BARRICADES REQUIRED TO DELINEATE THE WORK AREA AND KEEP AIRCRAFT OR GROUND VEHICLES FROM ENCRoACHING INTO SAID WORK AREA. THIS REQUIREMENT SHALL BE CONSIDERED INCIDENTAL TO THE CONTRACT AND NO ADDITIONAL COMPENSATION WILL BE ALLOWED.
6. CONSTRUCTION ACTIVITY CONTROL AND OPERATION AREA PROTECTION SHALL BE ACCOMPLISHED IN ACCORDANCE WITH FAA ADVISORY CIRCULAR NO. 150/5370-2F.
7. THE MAXIMUM CONSTRUCTION EQUIPMENT HEIGHT UTILIZED ON THE AIRPORT FOR THIS PROJECT SHALL BE 25'.
8. THIS PROJECT CONSISTS OF WORK TO EXPAND THE APRON PAVEMENT TO THE SOUTH OF THE EXISTING APRON.
9. THIS PROJECT WILL DISTURB MORE THAN 1 ACRE OF LAND.
10. LATHES WITH RIBBON FLAGGING SPACED AT 50' CENTERS SHALL BE PLACED 40' FROM THE T-HANGAR ACCESS TAXIWAY Q TO DELINEATE THE LIMITS OF CONSTRUCTION OPERATIONS WHILE THE TAXIWAY IS ACTIVE/OPEN.
11. NO WORK SHALL BE PERFORMED WITHIN 40' OF THE Q OF THE ACTIVE TAXIWAY. AT SUCH TIME AS WORK IS PERFORMED WITHIN THIS AREA, THE TAXIWAY SHALL BE CLOSED TO AIRCRAFT USAGE.

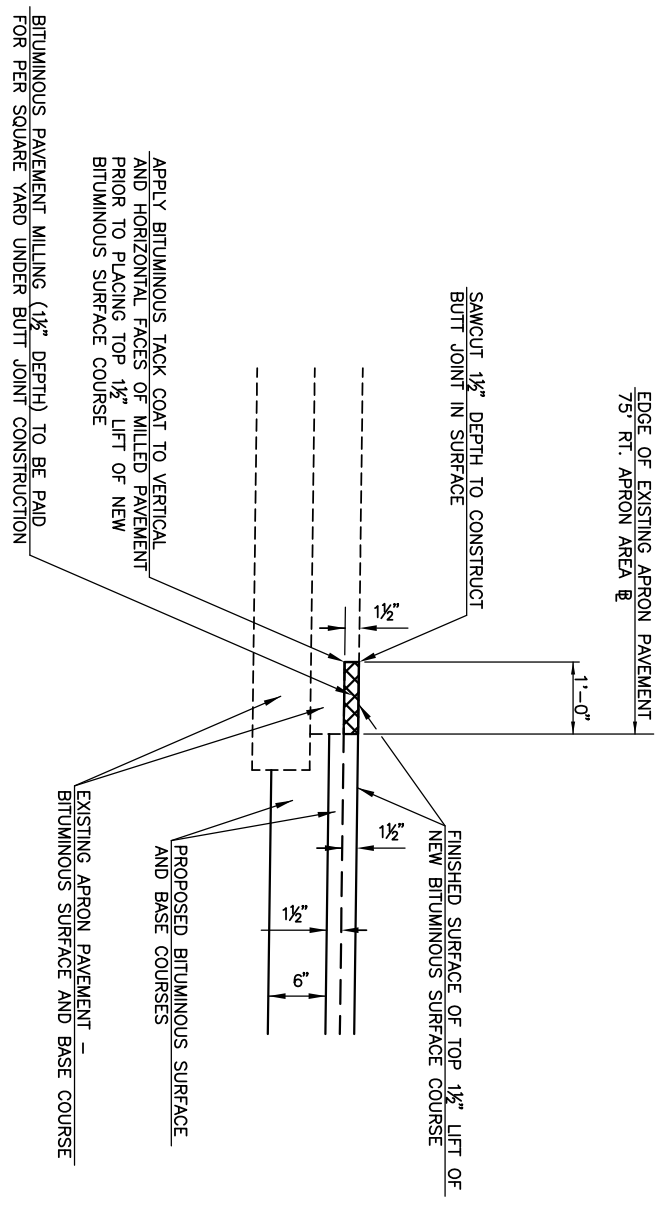
GENERAL NOTES

1. THE CONTRACTOR SHALL BE RESPONSIBLE FOR PROTECTING UTILITY PROPERTY FROM CONSTRUCTION OPERATIONS. PRIOR TO STARTING WORK, THE CONTRACTOR SHALL CONTACT JULLIE (JOINT UTILITY LOCATING INFORMATION FOR EXCAVATORS) PHONE 1-800-892-0123 OR 811 TO ARRANGE FOR LOCATION OF UTILITIES IN THE WORK AREA. A MINIMUM OF FORTY-EIGHT HOURS ADVANCE NOTICE IS REQUIRED FOR NON-EMERGENCY WORK.

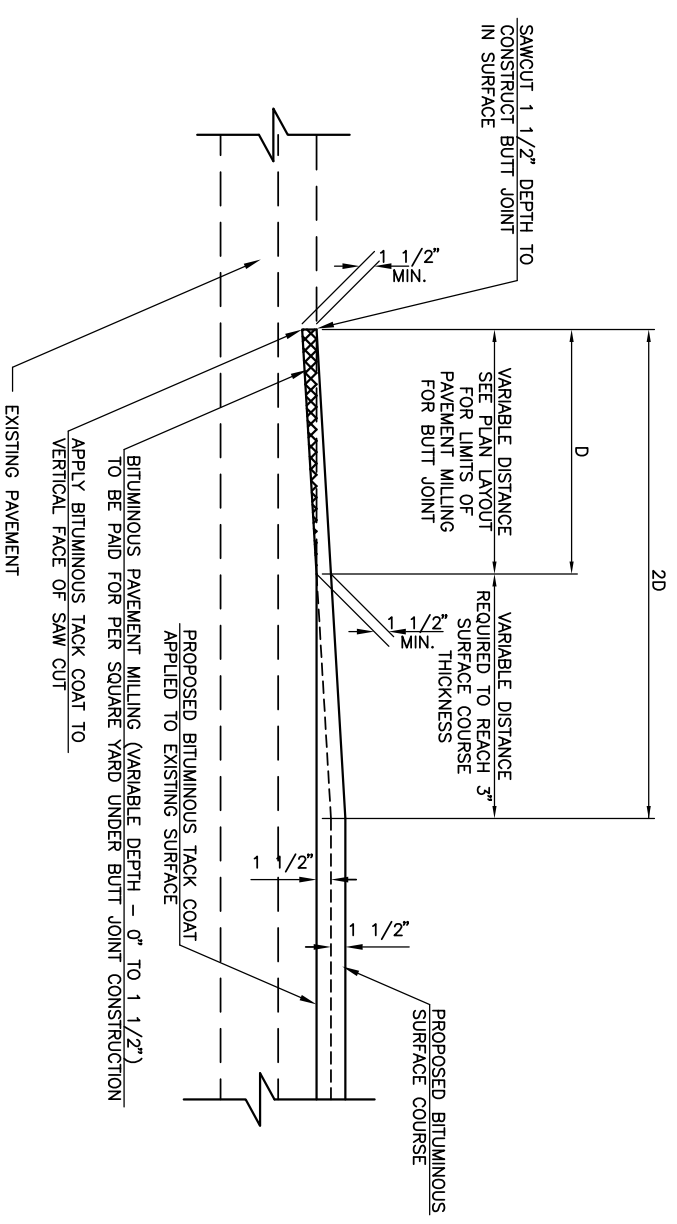
- COUNTY = PIKE
- CITY = PITTSFIELD
- TOWNSHIP = T. 5 S., R. 3 W. 4th P.M. (NEWBURG)
- SECTION NO. = 7 & 8

PITTSFIELD	PENSTONE MUNICIPAL AIRPORT
	PITTSFIELD, ILLINOIS
IMPROVEMENT AND SAFETY PLAN	
HUTCHISON ENGINEERING, INC. JACKSONVILLE, ILLINOIS	
DRAWN BY: R.L.R.	ILL. PROJ. NO. PPG-4082
DATE: FEBRUARY, 2012	AIP PROJ. NO. 3-17-0081-B14

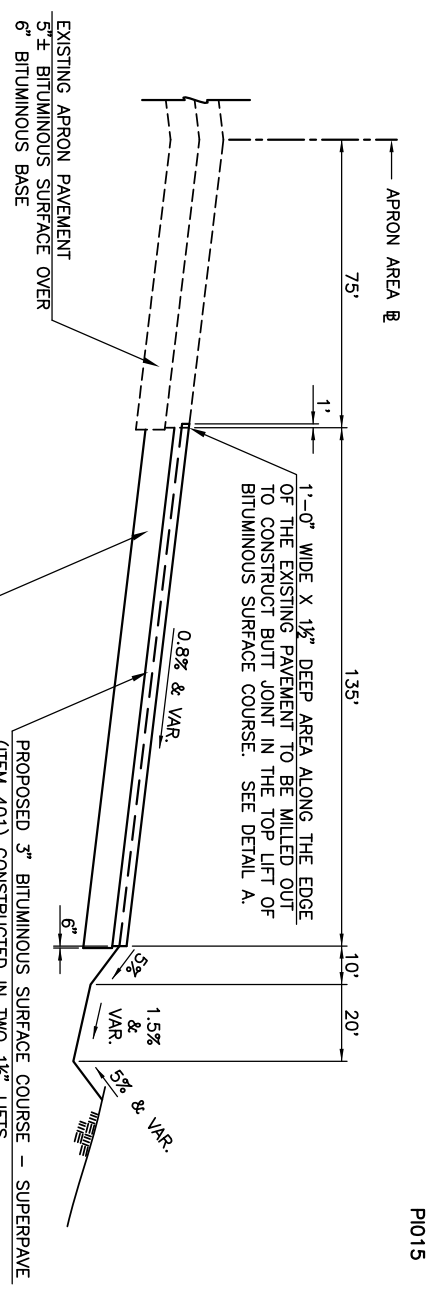
EDGE OF EXISTING APRON PAVEMENT
75' RT. APRON AREA @



DETAIL A
NOT TO SCALE



BITUMINOUS BUTT JOINT CONSTRUCTION DETAIL
NOT TO SCALE



- NOTES :
1. THE SUBGRADE BENEATH NEW PAVEMENT SHALL BE COMPACTED TO 95% OF MAXIMUM DENSITY OBTAINED BY STANDARD PROCTOR TO A 6" DEPTH IN CUT AREAS AND TO A 9" DEPTH IN EMBANKMENT AREAS. EMBANKMENTS BELOW THE TOP 9" SHALL BE COMPACTED TO 95% OF MAXIMUM DENSITY.
 2. A BITUMINOUS TACK COAT—ITEM 603 (0.03 GALLONS PER SQUARE YARD) SHALL BE APPLIED BETWEEN THE LIFTS OF NEW BITUMINOUS PAVEMENT.

APRON TYPICAL SECTION
NOT TO SCALE

EARTHWORK SUMMARY

RT. STA. 19+79 TO STA. 24+20 (APRON AREA @)

UNCLASSIFIED EXCAVATION =	2,513 CU. YD.
EMBANKMENT +30% SHRINKAGE =	56 CU. YD.
TOTAL TO BE WASTED =	2,457 CU. YD.

EARTHWORK NOTE : 1. EXCESS EXCAVATION NOTED ABOVE TO BE WASTED SHALL BE HAULED TO THE WASTE AREA SHOWN ON SHEET NO. 2 AND BE PLACED, GRADED AND SHARPED TO DRAIN BY THE CONTRACTOR.

SEEDING NOTES

ALL AREAS DISTURBED BY THIS CONSTRUCTION PROJECT WITHIN THE GRADING LIMITS SHOWN IN THESE CONSTRUCTION PLANS AND THE SEEDING LIMITS SHOWN OUTSIDE THE GRADING LIMITS SHALL BE LIMED, FERTILIZED, SEEDED AND MULCHED. THESE AREAS SHALL CONSTITUTE THE SEEDING AND MULCHING AREAS DESIGNATED FOR PAYMENT.

ALL OTHER AREAS DISTURBED BY THE CONTRACTOR INCLUDING THE CONTRACTOR'S PARKING AREA, WASTE AREA, HAUL ROUTES, ETC. SHALL BE REGRADED, RESEEDED AND MULCHED AS REQUIRED BY THE RESIDENT ENGINEER AND/OR RESTORED TO THEIR ORIGINAL CONDITION BY THE CONTRACTOR AT HIS OWN EXPENSE UPON COMPLETION OF THE IMPROVEMENTS.

A QUANTITY OF 0.6 AC. CONSTITUTES THE AREA FOR PAYMENT.

PITTSFIELD PENSTONE MUNICIPAL AIRPORT
PITTSFIELD, ILLINOIS

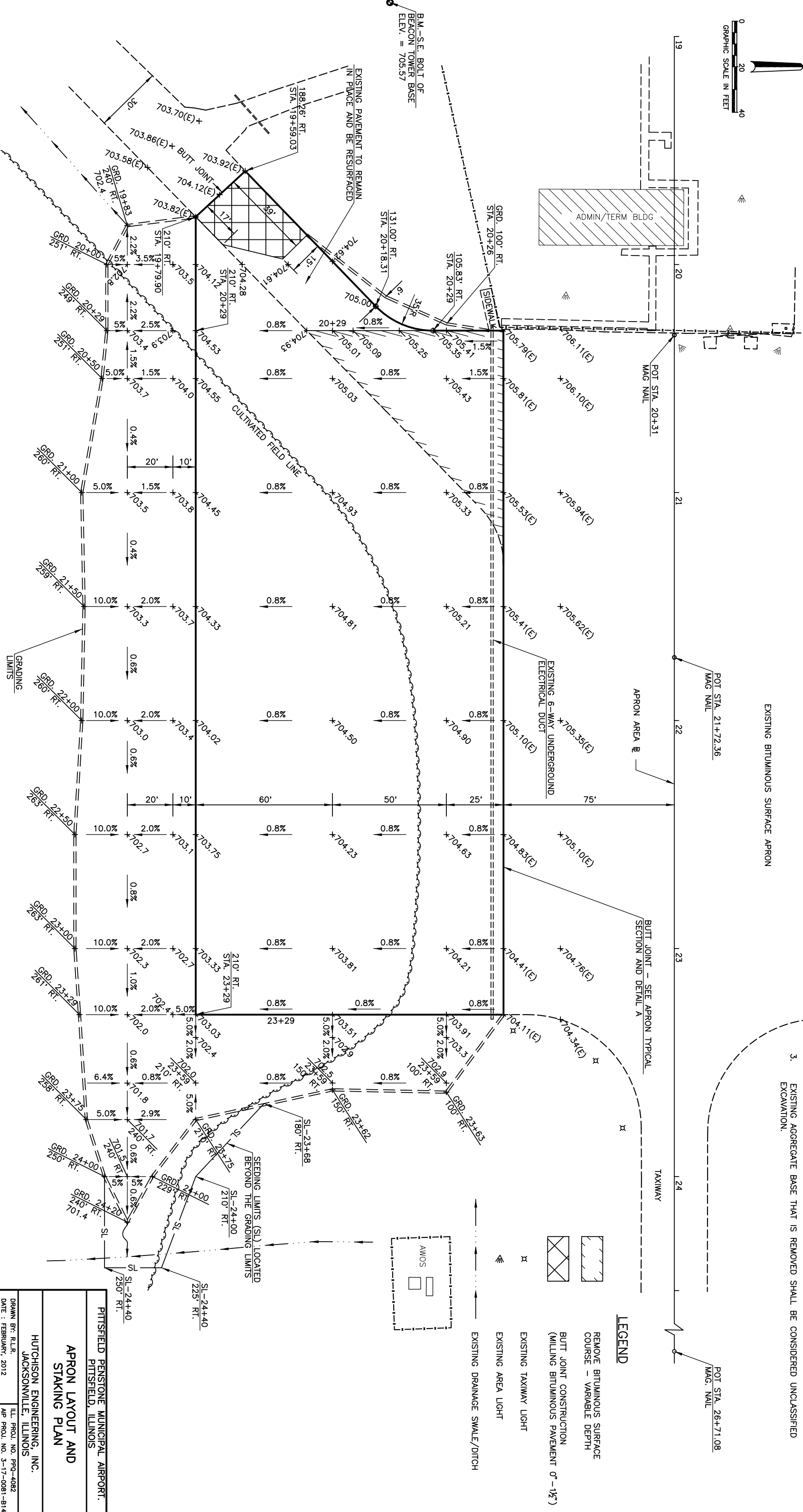
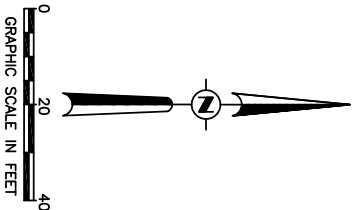
**TYPICAL SECTION
AND SPECIAL DETAILS**

HUTCHISON ENGINEERING, INC.
JACKSONVILLE, ILLINOIS

DRAWN BY: R.L.R.
DATE: FEBRUARY, 2012
ILL. PROJ. NO. PRO-4082
A/P PROJECT NO. 3-17-0081-B14

GENERAL NOTES

1. ELEVATIONS SHOWN ARE TOP OF FINISHED SURFACE ELEVATIONS. (E) SHOWN AFTER AN ELEVATION DENOTES AN EXISTING ELEVATION.
2. WHERE PROPOSED BITUMINOUS SURFACE ABUTS EXISTING PAVEMENT, THE EXISTING PAVEMENT SHALL BE CUT TO PRODUCE A STRAIGHT VERTICAL FACE TO ABUT THE PROPOSED SURFACE TO. PRIOR TO SURFACING, THE VERTICAL FACES OF ALL ABUTTING EXISTING PAVEMENT SHALL BE PAINTED WITH LIQUID ASPHALT. COST OF THIS WORK SHALL BE CONSIDERED INCIDENTAL TO THE CONTRACT.
3. EXISTING AGGREGATE BASE THAT IS REMOVED SHALL BE CONSIDERED UNCLASSIFIED EXCAVATION.



LEGEND

- REMOVE BITUMINOUS SURFACE COURSE - VARIABLE DEPTH
- BUTT JOINT CONSTRUCTION (MILLING BITUMINOUS PAVEMENT 0" - 1 1/2")
- EXISTING TAXIWAY LIGHT
- EXISTING AREA LIGHT
- EXISTING DRAINAGE SWALE/DITCH

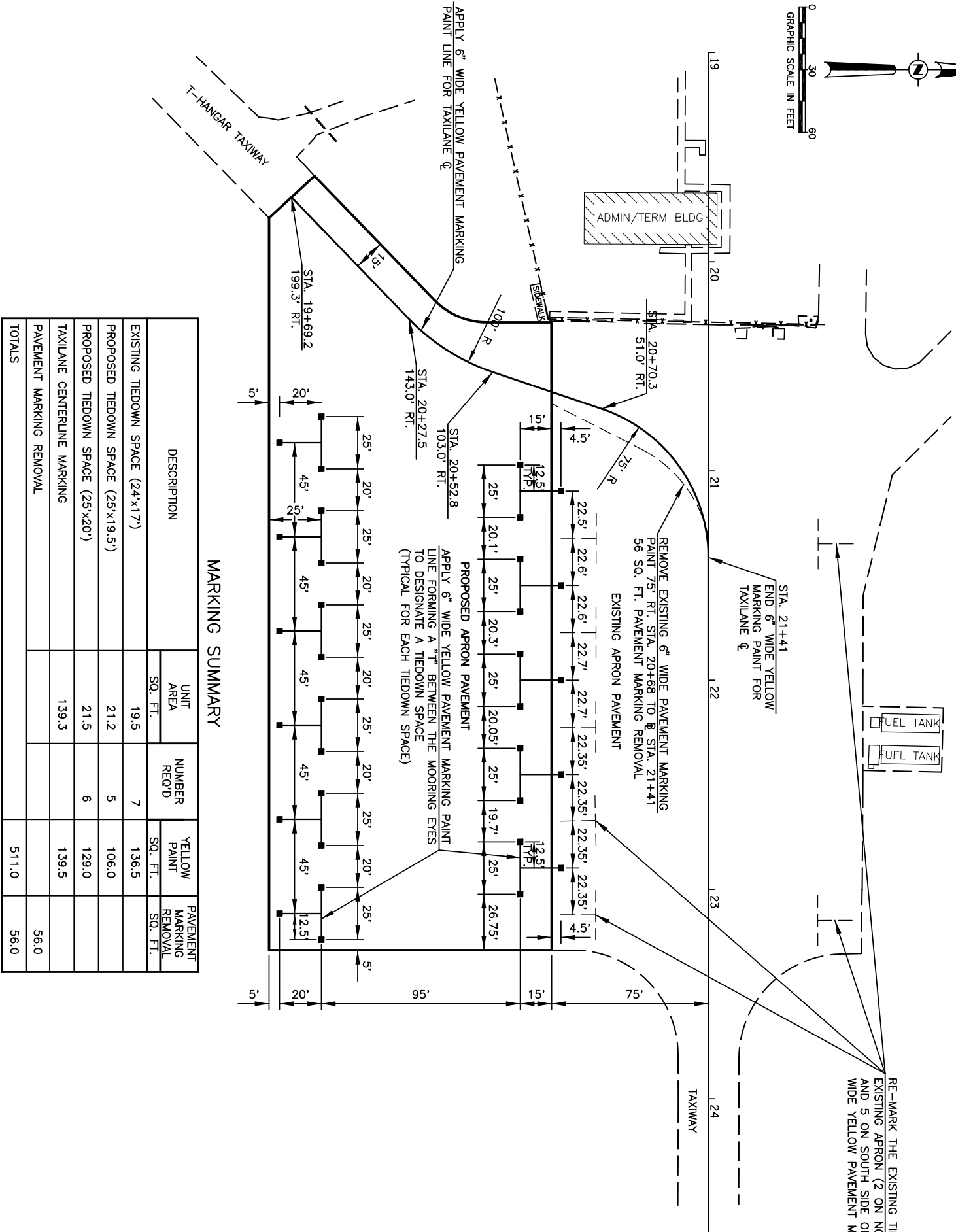
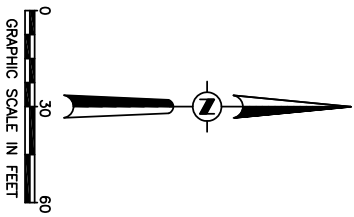
PITTSFIELD PENSTONE MUNICIPAL AIRPORT.
PITTSFIELD, ILLINOIS

APRON LAYOUT AND STAKING PLAN

HUTCHINSON ENGINEERING, INC.
JACKSONVILLE, ILLINOIS

DRAWN BY: R.L.R.
DATE: FEBRUARY, 2012

ILL. PROJ. NO. PPG-4082
AEP PROJ. NO. 3-17-0081-814



MARKING SUMMARY

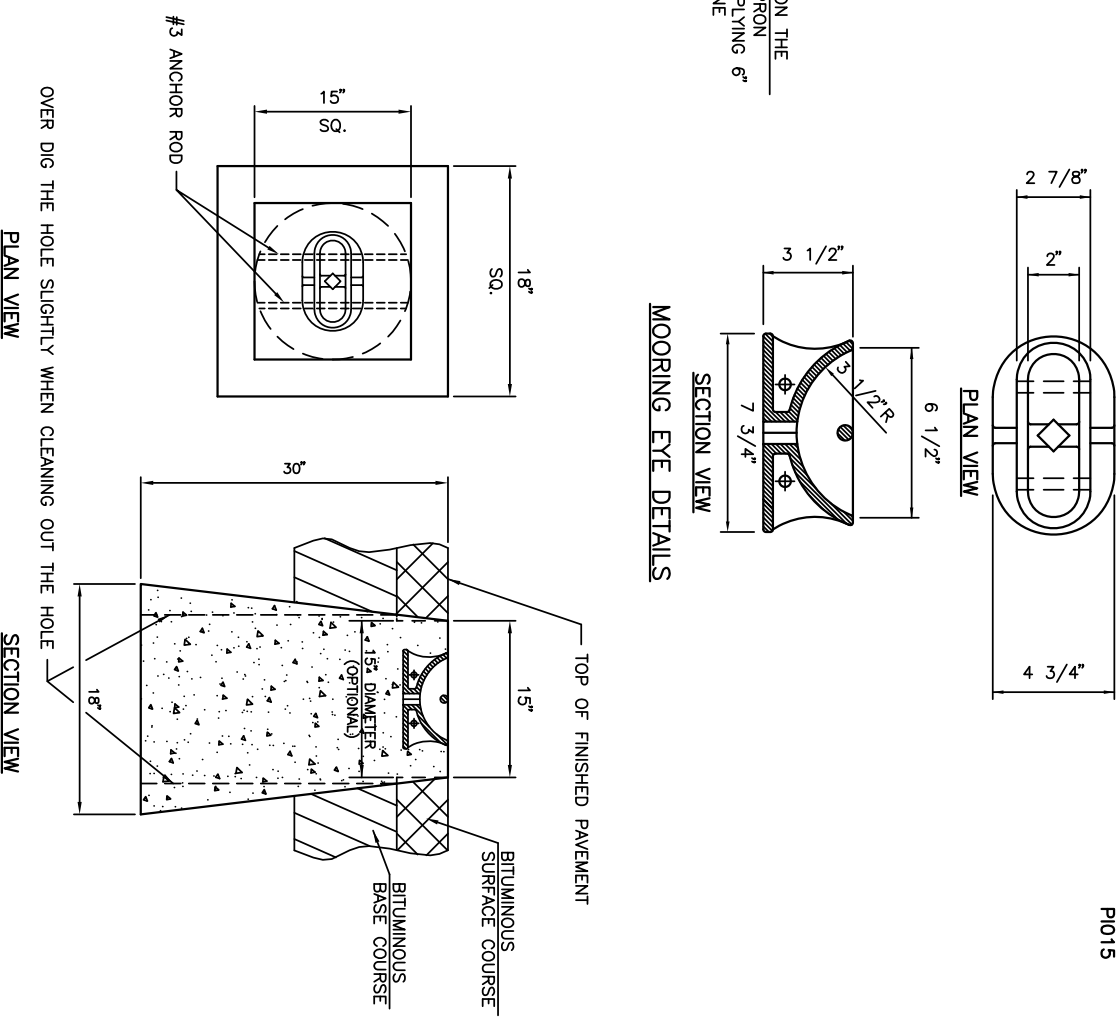
DESCRIPTION	UNIT	NUMBER REQ'D	YELLOW	PAVEMENT
	SQ. FT.		PAINT	REMOVAL
			SQ. FT.	SQ. FT.
EXISTING TIEDOWN SPACE (24'x17')	19.5	7	136.5	
PROPOSED TIEDOWN SPACE (25'x19.5')	21.2	5	106.0	
PROPOSED TIEDOWN SPACE (25'x20')	21.5	6	129.0	
TAXILANE CENTERLINE MARKING			139.5	
PAVEMENT MARKING REMOVAL				56.0
TOTALS			511.0	56.0

NOTES

1. ALL PAVEMENT MARKING SHALL BE SOLID MARKING AND YELLOW IN COLOR.
2. ALL PAVEMENT MARKING SHALL CONSIST OF TWO APPLICATIONS OF PAINT AND ONE APPLICATION OF GLASS BEADS (REFLECTIVE MEDIA).
3. PAINT SHALL BE APPLIED AT THE RATE OF 115 SQ. FT. PER GALLON PER APPLICATION. GLASS BEADS SHALL BE APPLIED AT THE RATE OF 7 POUNDS PER GALLON OF PAINT (APPLIED TO SECOND COAT ONLY).

RE-MARK THE EXISTING TIEDOWN SPACES ON THE EXISTING APRON (2 ON NORTH SIDE OF APRON AND 5 ON SOUTH SIDE OF APRON) BY APPLYING 6" WIDE YELLOW PAVEMENT MARKING PAINT LINE

MOORING EYE DETAILS



CONCRETE BASE DETAILS

NOTES

1. CONCRETE BASE TO BE STRUCTURAL P.C. CONCRETE (PLAN).
2. MOORING CASTING TO BE NEENAH SEMI-STEEL AIRPORT MOORING EYE-CATALOG NO. R-3490 OR EQUIVALENT.
3. ANCHOR RODS TO BE NO. 3 DEFORMED REINFORCING STEEL 15" LONG AND BENT DOWNWARD AT 45°.
4. INSTALLATION SHALL BE DONE AFTER COMPLETION OF BITUMINOUS SURFACE COURSE.
5. AFTER BITUMINOUS SURFACE COURSE HAS BEEN COMPLETED, OPENING SHALL BE CUT WITH A SAW OR CORED.
6. THE CONTRACTOR SHALL HAVE THE OPTION OF CONSTRUCTING THE CONCRETE BASE IN THE RECTANGULAR SHAPE SHOWN ABOVE OR IN A 15" MINIMUM DIAMETER CYLINDRICAL SHAPE AS SHOWN WITH DASHED LINES IN THE DETAILS ABOVE.

DETAIL OF TIEDOWN INSTALLATION

LEGEND

- PROPOSED TIEDOWN MOORING EYE
- PROPOSED TYPICAL TIEDOWN SPACE
- - - EXISTING TIEDOWN SPACE

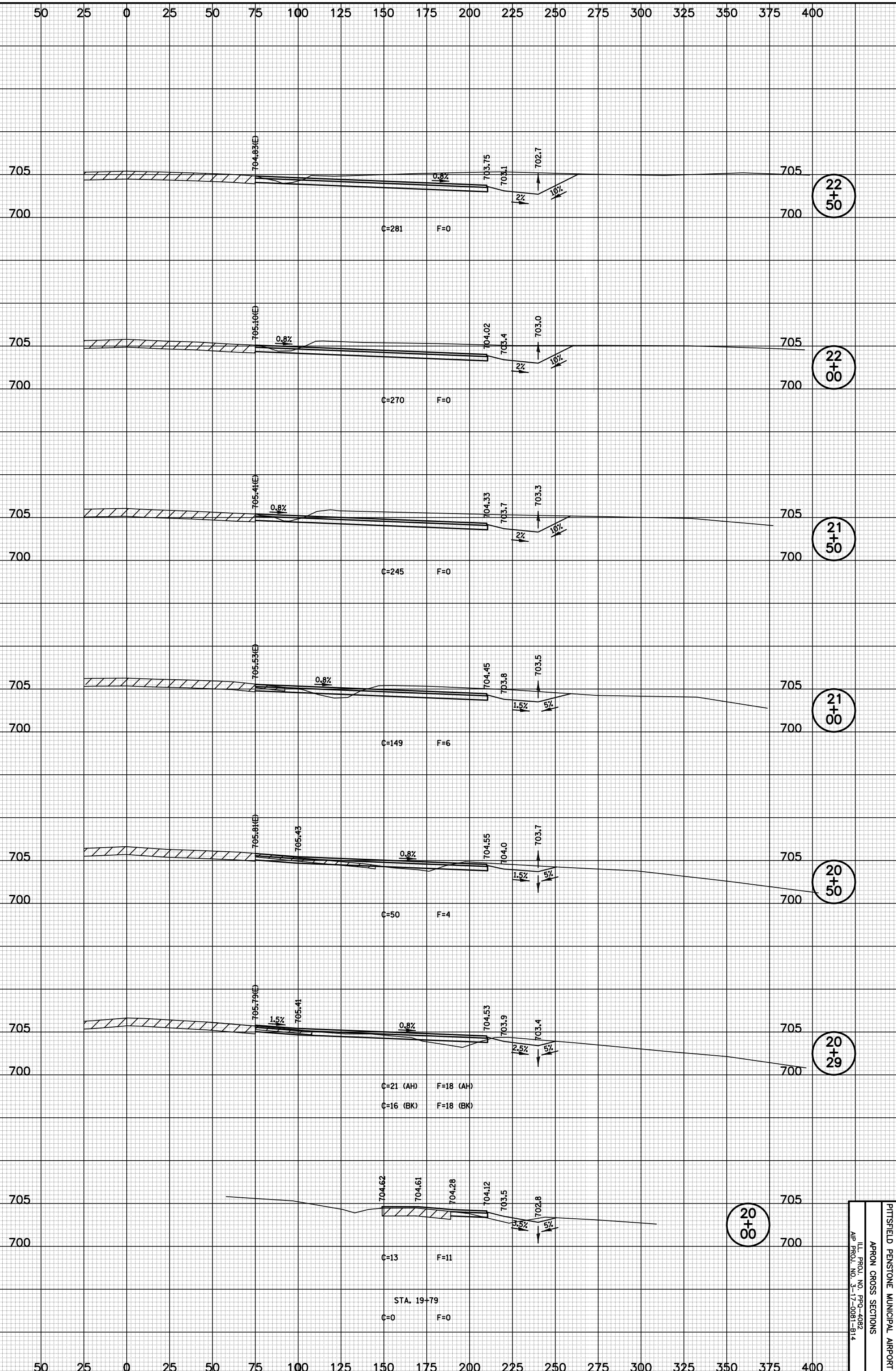
TIEDOWN AND MARKING LAYOUT AND DETAILS

PITTSFIELD PENNSTONE MUNICIPAL AIRPORT
PITTSFIELD, ILLINOIS

HUTCHISON ENGINEERING, INC.
JACKSONVILLE, ILLINOIS

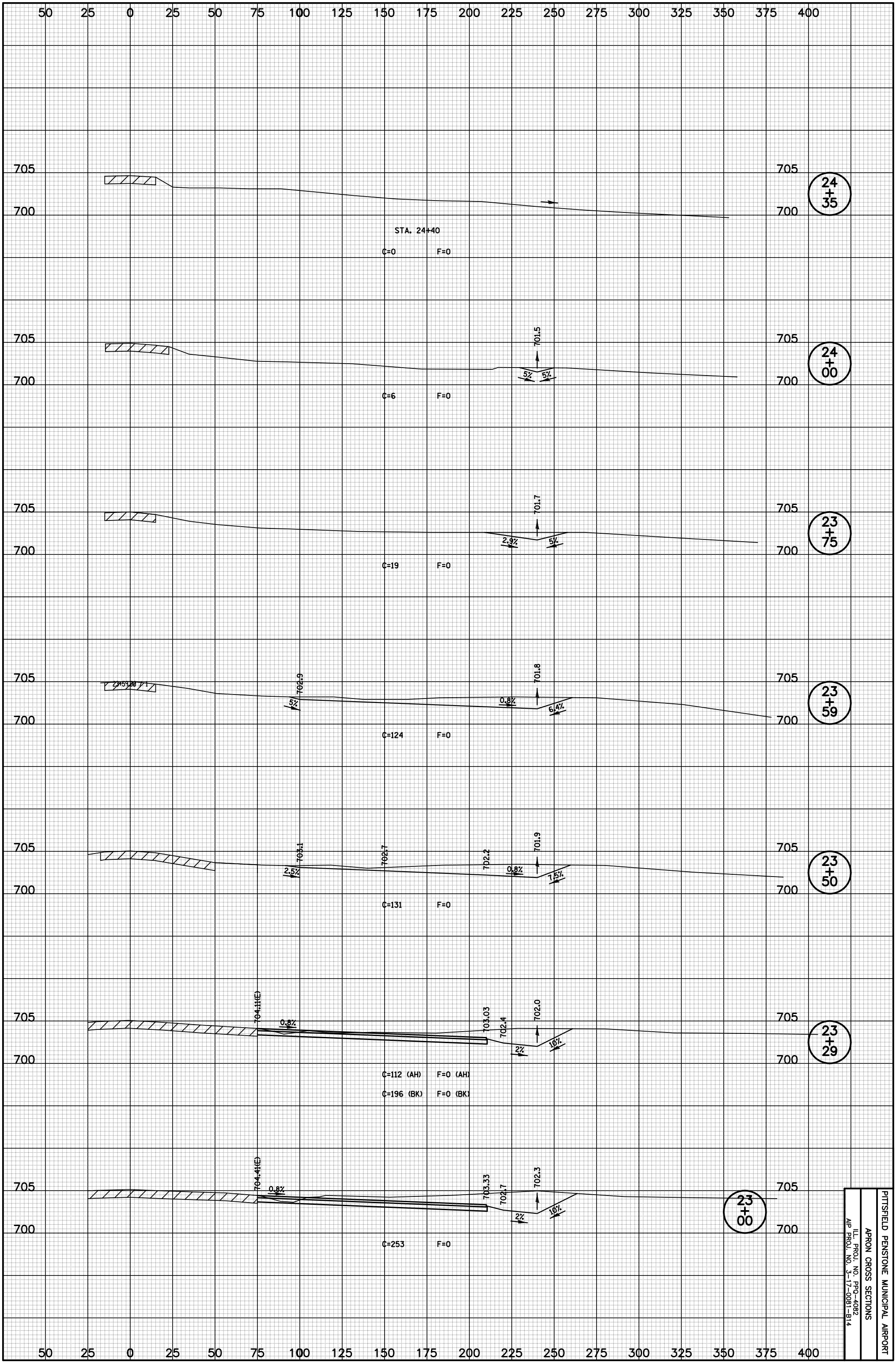
DRAWN BY: R.L.R.
DATE: FEBRUARY, 2012

ILL. PROJ. NO. PRO-4082
AIR PROJECT NO. 3-17-0081-B14



PITTSFIELD PENNSTONE MUNICIPAL AIRPORT
 APRON CROSS SECTIONS
 ILL. PROJ. NO. PR0-4082
 AIP PROJ. NO. 3-17-0081-514

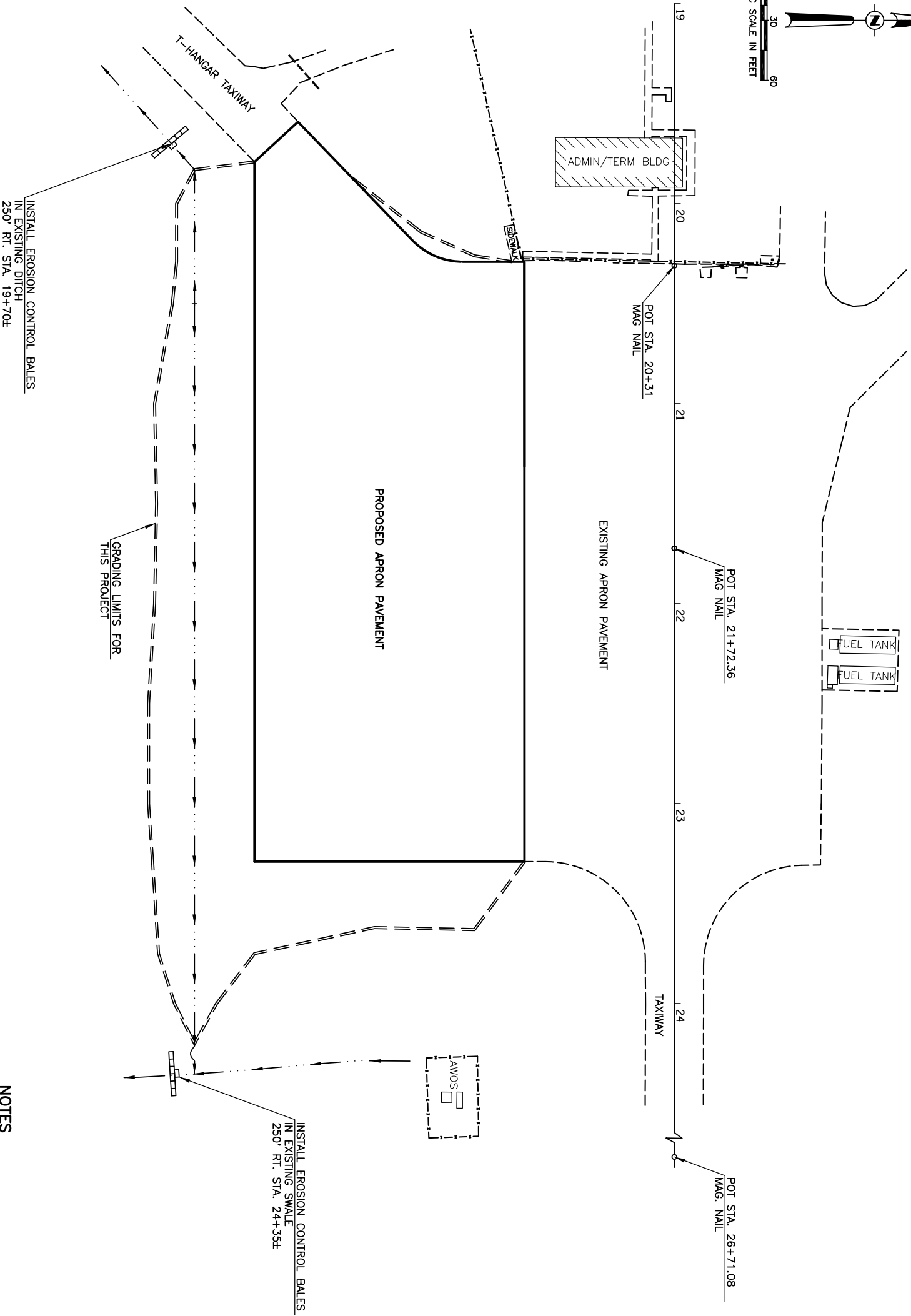
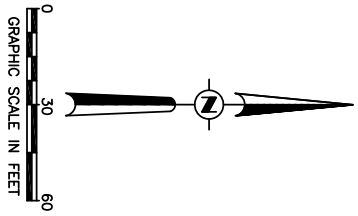
1/2" = 100'



SH. 7 OF 8 SHTS.

PITTSFIELD PENSTONE MUNICIPAL AIRPORT
 APRON CROSS SECTIONS
 ILL. PROJ. NO. PRD-4082
 AIP PROJ. NO. 3-17-0081-514

P1015



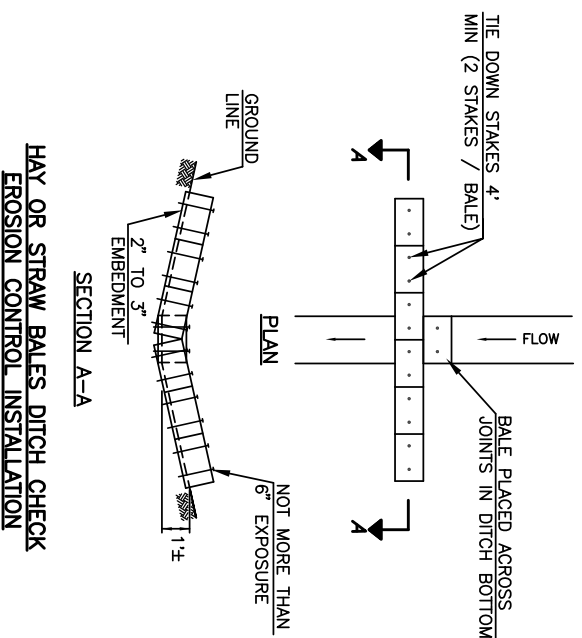
INSTALL EROSION CONTROL BALES
IN EXISTING DITCH
250' RT. STA. 19+70.6

GRADING LIMITS FOR
THIS PROJECT

INSTALL EROSION CONTROL BALES
IN EXISTING SWALE
250' RT. STA. 24+35.2

NOTES

1. THE AREAS DISTURBED BY THE CONSTRUCTION SHOWN IN THESE PLANS SHALL BE SEEDED AND MULCHED IN ADDITION TO THE EROSION CONTROL METHODS SHOWN ON THIS SHEET.
2. THE AREAS DISTURBED BY THE INSTALLATION AND THE REMOVAL OF THE TEMPORARY EROSION CONTROL SYSTEMS SHALL ALSO BE SEEDED AND MULCHED UPON THEIR REMOVAL.
3. EROSION CONTROL DEVICES SHALL CONFORM TO THE ILLINOIS ENVIRONMENTAL PROTECTION AGENCY STANDARDS AND SPECIFICATIONS FOR SOIL EROSION AND SEDIMENT CONTROL - CURRENT EDITION.
4. THIS CONSTRUCTION PROJECT WILL RESULT IN THE DISTURBANCE OF MORE THAN 1 ACRE OF LAND.
5. ADDITIONAL TEMPORARY EROSION CONTROL SYSTEM (HAY OR STRAW BALES) SHALL BE LOCATED AND CONFIGURED AS DIRECTED BY THE RESIDENT ENGINEER SHOULD THEIR USE BE REQUIRED TO CONTROL SILTATION.



LEGEND

- EXISTING DRAINAGE CHANNEL/SWALE/DITCH
- PROPOSED EROSION CONTROL BALES INSTALLATION

PITTSFIELD PENSTONE MUNICIPAL AIRPORT PITTSFIELD, ILLINOIS
EROSION CONTROL PLAN
HUTCHISON ENGINEERING, INC. JACKSONVILLE, ILLINOIS
DRAWN BY: R.L.R. DATE: FEBRUARY, 2012
I.L. PROJ. NO. PPD-4082 A/P PROJ. NO. 3-17-0081-814