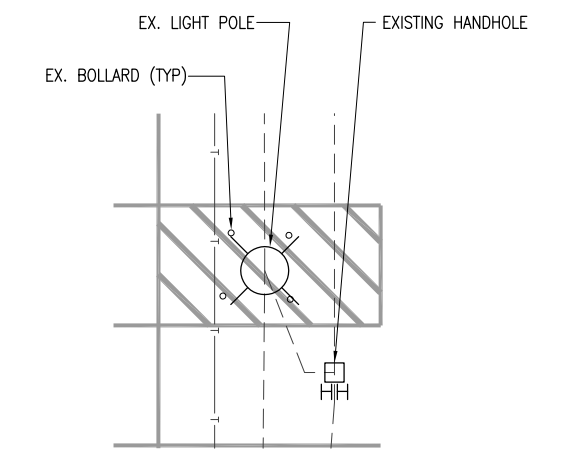


LEGEND

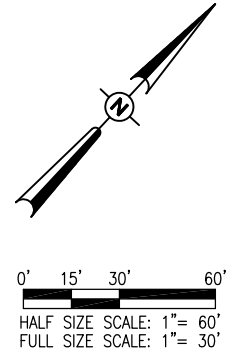
- EXISTING BUILDING
- PROPOSED IMPROVEMENTS
- EXISTING FENCE
- EXISTING STORM SEWER
- EXISTING WATERLINE
- EXISTING SANITARY
- EXISTING TELEPHONE
- EXISTING FIBER OPTIC
- EXISTING GAS
- EXISTING OVERHEAD ELECTRIC
- EXISTING ELECTRIC
- EXISTING STORM INLET/MAHOLE
- EXISTING POLE-MOUNTED LIGHT

HORIZONTAL AND VERTICAL CONTROL DATA

POINT #	DESCRIPTION	NORTHING	EASTING	ELEVATION
BM-11	CHISELED X ON FIRE HYDRANT	---	---	410.51
BM-12	CHISELED SQ. ON CORNER OF CONC. AROUND MANHOLE	---	---	406.99
200	5/8" IRON PIN	695436.4470	2299055.7500	408.69
201	5/8" IRON PIN	695555.4230	2299173.1880	407.83
202	MAG NAIL	695772.1180	2299087.9240	407.73
203	5/8" IRON PIN	695752.2900	2298808.9980	408.75
204	5/8" IRON PIN	695620.3640	2298925.3920	408.59



DETAIL OF EX. HANDHOLE, LIGHT POLE AND BOLLARDS



MAR 22, 2012 10:32 AM HARR01115
 p:\s\svr306\hanson.dom\hanson_projects\Documents\11\11A0086D\11A0086D\CAD\Airport\Sheet\C-101-SIT

REVISION	DATE

SAINT LOUIS DOWNTOWN AIRPORT

A Division of Bi-State Development Agency
A.I.P. PROJ.: 3-17-0039-B28
IL PROJ.: CPS-4138

Hanson Proj. No. 11A0086D	11/14/11
Filename C-101-SIT.dwg	MAJ
Scale AS SHOWN	MLH
Date 03/09/12	RAW
LAYOUT	REVIEWED
DRAWN	DATE

HANSON
 Professional Services Inc. 2012
 Hanson Professional Services Inc.
 1525 South Sixth Street
 Springfield, Illinois 62703-2886
 Ph: (217) 788-2450 Fax: (217) 788-2503
 www.hanson-inc.com
 Offices Nationwide

REHABILITATE
ENTRANCE ROAD
AND PARKING LOT

EXISTING SITE PLAN

5

5 of 11 sheets