

04-27-2018 LETTING ITEM 034

STATE OF ILLINOIS
DEPARTMENT OF TRANSPORTATION

F.A.S. RTE.	SECTION	COUNTY	TOTAL SHEETS	SHEET NO.
1771	(24 D-1 & (25) Q	SANG./LOGAN	5	1
		ILLINOIS	CONTRACT NO. 72K32	

D-96-017-18



FOR INDEX OF SHEETS, SEE SHEET NO. 2

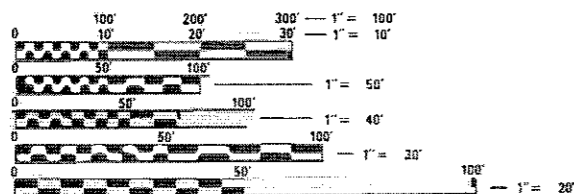
PROPOSED IMPROVEMENTS

FAS 1771 (I-55 E FR RD)
(24) Q-1 & (25) Q
BITUMINOUS SURFACE TREATMENT

SANGAMON/LOGAN CO

C-96-024-18

ADT=1,450
SU=1000
MU=250

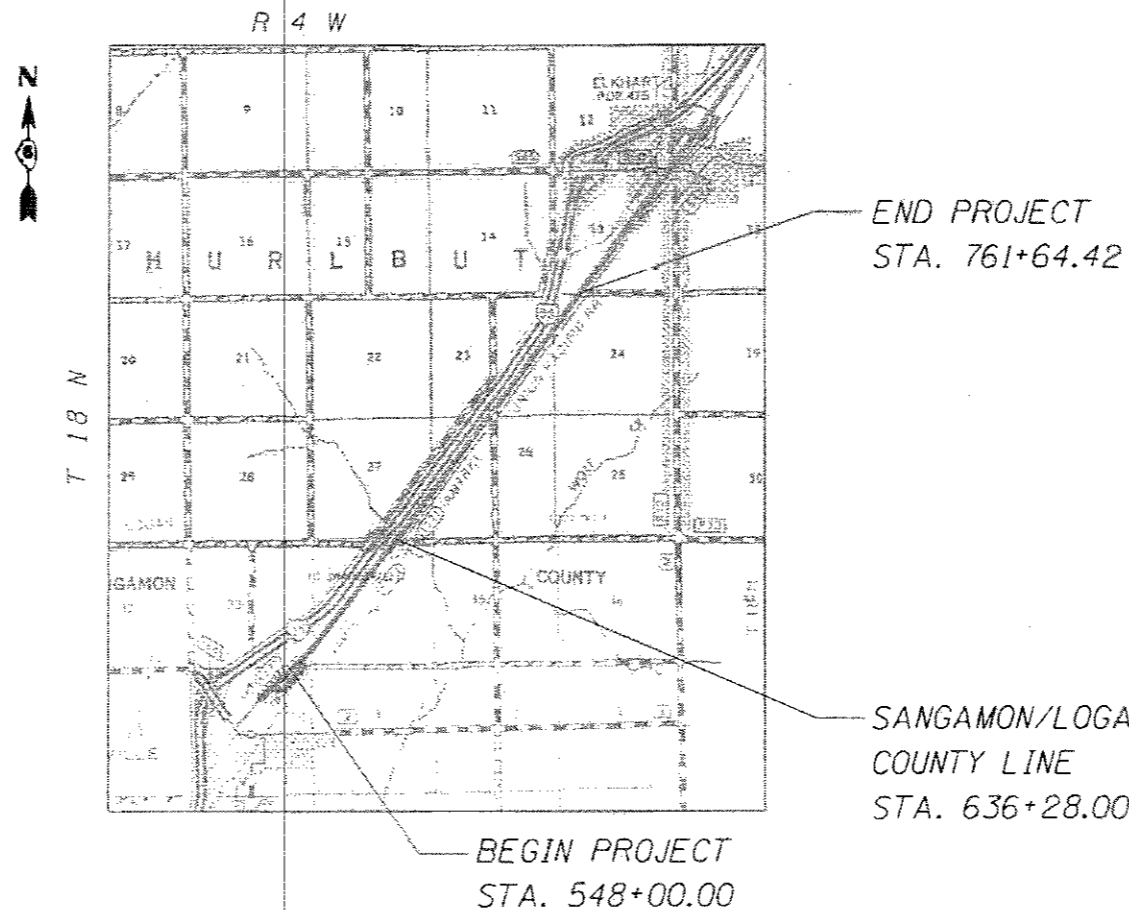


FULL SIZE PLANS HAVE BEEN PREPARED USING STANDARD ENGINEERING SCALES. REDUCED SIZED PLANS WILL NOT CONFORM TO STANDARD SCALES. IN MAKING MEASUREMENTS ON REDUCED PLANS, THE ABOVE SCALES MAY BE USED.

J.U.L.I.E.
JOINT UTILITY LOCATION INFORMATION FOR EXCAVATION
1-800-892-0123
OR 811

PROJECT ENGINEER : MIKE IRWIN - (217)524-7765
PROJECT MANAGER : TIM SHARP - (217)524-9160

CONTRACT NO. 72K32



STATE OF ILLINOIS
DEPARTMENT OF TRANSPORTATION

SUBMITTED *19 January 2018*

[Signature] N FOUR ENGINEER

Mar 23 2018 ENGINEER OF DESIGN AND ENVIRONMENT

Paul P. [Signature] DIRECTOR OF HIGHWAYS PROJECT IMPLEMENTATION

PRINTED BY THE AUTHORITY OF THE STATE OF ILLINOIS

INDEX OF SHEETS

SHEET NO.	DESCRIPTION
1.	COVER SHEET
2.	INDEX OF SHEETS, STANDARDS, GENERAL NOTES & SIGNATURE
3.	SUMMARY OF QUANTITIES
4.	PROJECT LOCATION MAP
5.	PROJECT TYPICAL SECTIONS

STANDARDS

STANDARD NO.	DESCRIPTION
701001-02	OFF-ROAD OPERATIONS, 2L, 2W, MORE THAN 15' (4.5m) AWAY
701006-05	OFF-ROAD OPERATIONS, 2L, 2W, 15' (4.5m) TO 24" (600mm) FROM EDGE OF PAVMENT
701201-04	LANE CLOSURE, 2L, 2W, DAY ONLY, FOR SPEEDS \geq 45 MPH
701301-04	LANE CLOSURE, 2L, 2W, SHORT TERM OPERATIONS
701306-04	LANE CLOSURE, 2L, 2W, SLOW MOVING OPERATIONS DAY ONLY, FOR SPEEDS \geq 45 MPH
701311-03	LANE CLOSURE, 2L, 2W, MOVING OPERATIONS, DAY ONLY
701901-07	TRAFFIC CONTROL DEVICES

NOTES:

COVER AND SEAL COAT AGGREGATE SHALL BE CRUSHED LIMESTONE

D-6 OPERATIONS WILL PLACE PERMANENT PAVEMENT MARKINGS

UP TO 3 SWEEPINGS MAY BE REQUIRED BY A ROTARY TYPE BROOM TO REMOVE EXCESS AGGREGATE.

CONTRACTOR SHALL PLACE AGGREGATE SHOULDERS, TYPE B. PRIOR TO BITUMINOUS SURFACE TREATMENTS A2.

**STATE OF ILLINOIS
DEPARTMENT OF TRANSPORTATION
DIVISION OF HIGHWAYS
DISTRICT 6**

EXAMINED January 18 20 18

[Signature]
ENGINEER OF OPERATIONS

EXAMINED DEC 27 20 17

[Signature]
ENGINEER OF PROJECT IMPLEMENTATION

EXAMINED December 28 20 17

[Signature]
ENGINEER OF PROGRAM DEVELOPMENT

FILE NAME =	USER NAME = sha-ptd	DESIGNED =	REVISED =	STATE OF ILLINOIS DEPARTMENT OF TRANSPORTATION	INDEX OF SHEETS, STANDARDS GENERAL NOTES, SIGNATURES	F.A.S. RTE.	SECTION	COUNTY	TOTAL SHEETS	SHEET NO.	
S:\CONTRMAINT_CAD\72K32 - FAS 1771 11-55	E:\FR RD\ Sang Logan Co. - A-2\PLANS\72K32-5	DRAWN	REVISED			1771	(24 0-1 & (25) 0	SANG/LOGAN	5	2	
Default	PLOT SCALE = 40.0000' / in.	CHECKED	REVISED			SCALE: _____ SHEET _____ OF _____ SHEETS STA. _____ TO STA. _____					
	PLOT DATE = 1/3/2018	DATE	REVISED			ILLINOIS FED. AID PROJECT					

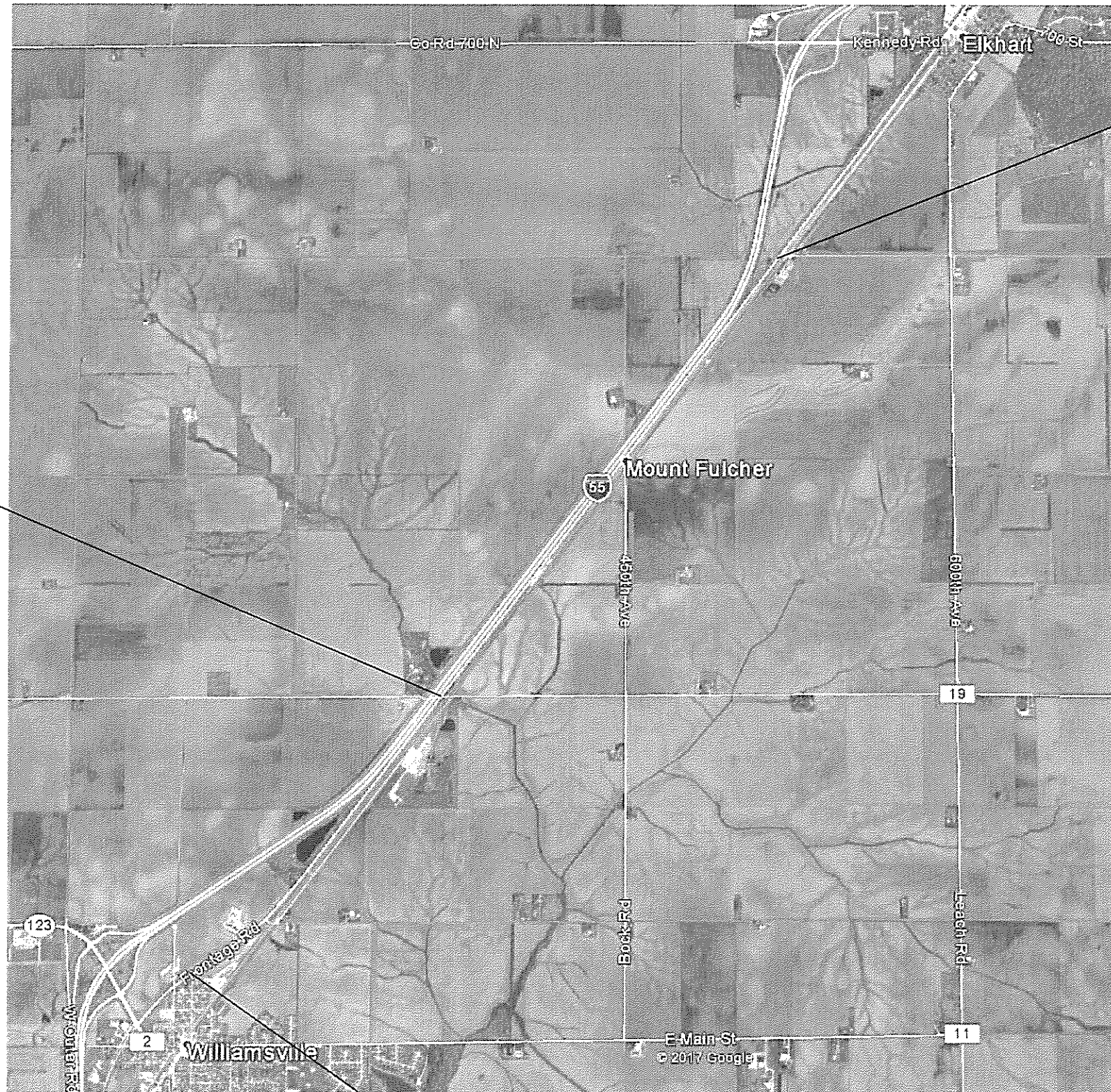
CODE NO.	ITEM	UNIT	TOTAL QUANTITY	FAS 1771	FAS 1771
				0-01624-6016	0-01624-6016
				100% STATE	100% STATE
				SANGAMON	LOGAN
				ROADWAY	ROADWAY
				0005	0005
				RURAL	RURAL
40300400	BITUMINOUS MATERIALS (COVER AND SEAL COAT)	TON	176	73	103
40300500	COVER COAT AGGREGATE	TON	713	295	418
40300600	SEAL COAT AGGREGATE	TON	571	236	335
40600400	MIXTURE FOR CRACKS, JOINTS AND FLANGEWAYS	TON	8	3	5.0
48101200	AGGREGATE SHOULDERS, TYPE B	TON	1,623	671	952
67100100	MOBLIZATION	LSUM	1	0.4	0.6
70100450	TRAFFIC CONTROL AND PROTECTION, STANDARD 701201	LSUM	1	0.4	0.6
70100460	TRAFFIC CONTROL AND PROTECTION, STANDARD 701306	LSUM	1	0.4	0.6
78300200	RAISED REFLECTIVE PAVEMENT MAKER REMOVAL	EACH	157	0	157

APPLICATION RATES		
	AGGREGATE	BITUMINOUS MATERIAL
COVER COAT	25 lb/sq yd	0.32 gal/sq yd
SEAL COAT	20 lb/sq yd	0.40 gal/sq yd

THE APPLICATION RATES SHOWN ABOVE MAY BE ADJUSTED BY THE ENGINEER BASED ON FIELD CONDITIONS



SANGAMON/
LOGAN CO. LINE
STA. 636+28.00



END PROJECT
STA. 761+64.42

BEGIN PROJECT
STA. 548+00.00

FILE NAME *	USER NAME * shorptd	DESIGNED - _____	REVISED - _____
S:\CONTRACTS\CAD\72K32 - FAS 1771 11-55	E FR RD Sang Logan Co. - A-2\PLANS\72K32-5	CHECKED - _____	REVISED - _____
Default	PLOT DATE = 12/27/2017	DATE - _____	REVISED - _____

**STATE OF ILLINOIS
DEPARTMENT OF TRANSPORTATION**

LOCATION MAP

SCALE: _____ SHEET _____ OF _____ SHEETS STA. _____ TO STA. _____

F.A.S. RTE.	SECTION	COUNTY	TOTAL SHEETS	SHEET NO.
1171	124 0-1 & (25) 0	SANG/LOGAN	5	4
CONTRACT NO. 72K32				
ILLINOIS FED. AID PROJECT				

