

STATE OF ILLINOIS
DEPARTMENT OF TRANSPORTATION

F.A.P. RTE.	SECTION	COUNTY	TOTAL SHEETS	SHEET NO.
312	(72-1,74-3)RS-3	RANDOLPH	17	1
ILLINOIS		CONTRACT NO. 76K32		

FOR INDEX OF SHEETS, SEE SHEET NO. 2

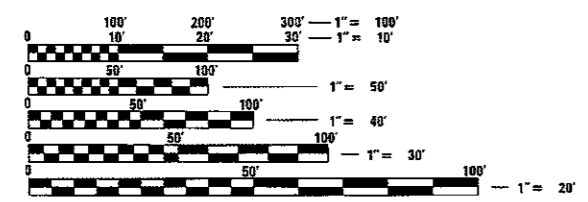
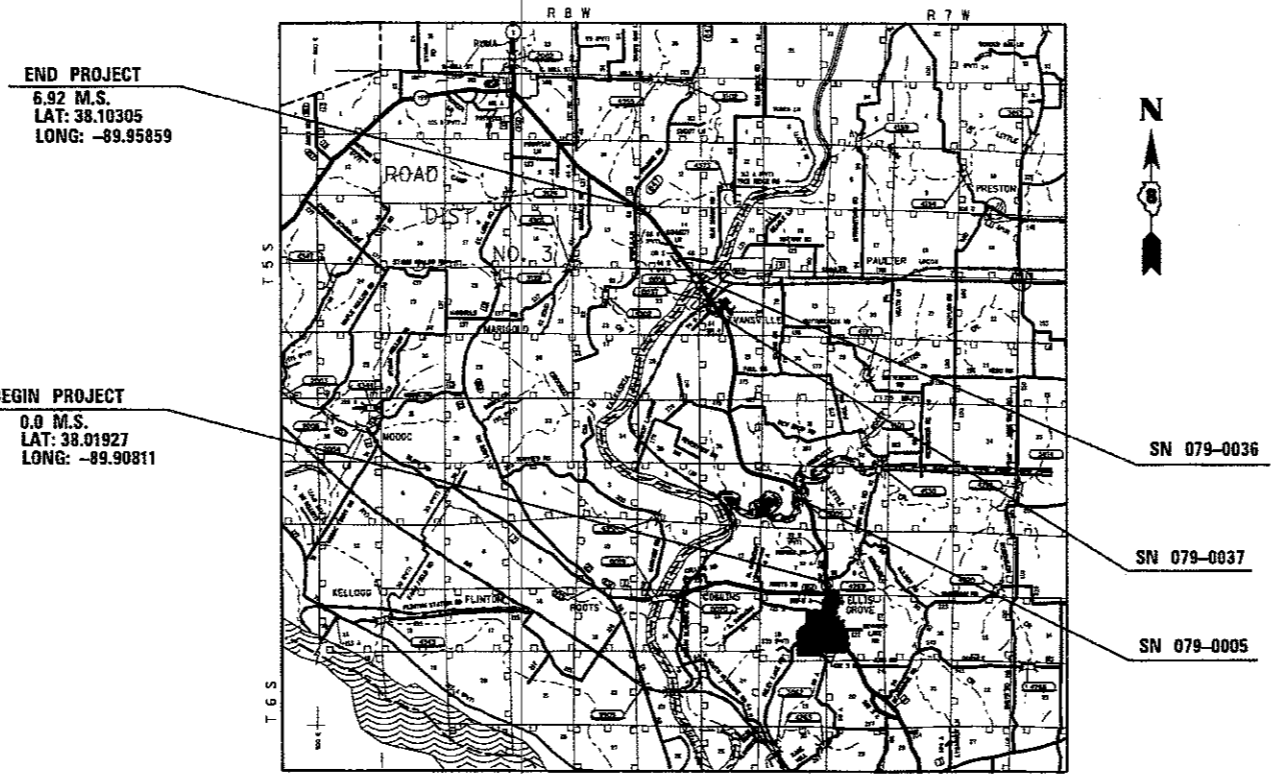
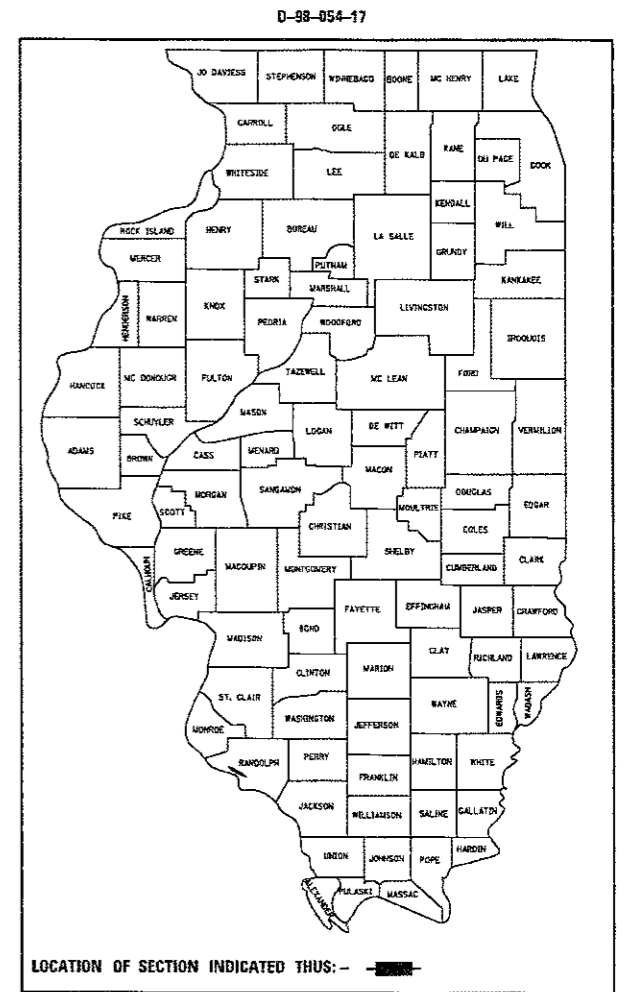
TRAFFIC DATA		
LOCATION	S. PRAIRIE RD.	ROOTS RD.
2015 ADT	3800 (ACTUAL)	3100 (ACTUAL)
2018 ADT	3950 (ESTIMATED)	3200 (ESTIMATED)
2038 ADT	5000 (ESTIMATED)	4100 (ESTIMATED)
MUZ	7.9	8.1
SLZ	17.8	6.9

BRIDGE OMISSION			
STRUCTURE NO.	FEATURE CROSSED	LOCATION	DECK LENGTH
079-0005	NINE MILE CREEK	1.54 M.S. - 1.57 M.S.	164.3 FT.
079-0037	UNION PACIFIC RAILROAD	5.42 M.S. - 5.45 M.S.	150.8 FT.
079-0036	KASKASKIA RIVER	5.59 M.S. - 5.70 M.S.	595.6 FT.

PROPOSED HIGHWAY PLANS

FAP ROUTE 312 (IL RTE. 3)
SECTION (72-1,74-3)RS-3
PROJECT NHPP-4QL3(511)
3P PROJECT
RANDOLPH COUNTY

C-98-199-18



FULL SIZE PLANS HAVE BEEN PREPARED USING STANDARD ENGINEERING SCALES. REDUCED SIZED PLANS WILL NOT CONFORM TO STANDARD SCALES. IN MAKING MEASUREMENTS ON REDUCED PLANS, THE ABOVE SCALES MAY BE USED.

J.U.L.I.E.
JOINT UTILITY LOCATION INFORMATION FOR EXCAVATION
1-800-892-0123
OR 811

PROJECT ENGINEER: TIM PADGETT (618) 346-3325
PROJECT MANAGER: DIANA MURRAY (618) 346-3207

CONTRACT NO. 76K32

LOCATION MAP
0 MI 1 MI 2 MI 3 MI
1" = 1 MILE

GROSS LENGTH = 36537.6 FT. = 6.920 MILE
NET LENGTH = 35626.9 FT. = 6.747 MILE
TOWNSHIPS: RANDOLPH ROAD DISTRICTS 1, 2 & 3

STATE OF ILLINOIS
DEPARTMENT OF TRANSPORTATION

SUBMITTED *Jan 26 2018*
Jeffrey Z. Kam
REGIONAL ENGINEER

May 23 2018
Paul P. Chaf
ENGINEER OF DESIGN AND ENVIRONMENT

May 23 2018
Paul P. Chaf
DIRECTOR OF HIGHWAYS PROJECT IMPLEMENTATION

PRINTED BY THE AUTHORITY
OF THE STATE OF ILLINOIS

INDEX OF SHEETS

- 1 COVER
- 2 INDEX OF SHEETS, STANDARDS, GENERAL NOTES & COMMITMENTS
- 3-4 SUMMARY OF QUANTITIES
- 5 LOCATION MAP
- 6-7 TYPICAL SECTIONS
- 8-12 SCHEDULE OF QUANTITIES
- 13-17 SURVEY MONUMENT LOCATIONS

STANDARDS

- 000001-06 STANDARD SYMBOLS, ABBREVIATIONS AND PATTERNS
- 001006 DECIMAL OF AN INCH AND OF A FOOT
- 442101-08 CLASS B PATCHES
- 442201-03 CLASS C AND D PATCHES
- 701006-05 OFF-RD OPERATIONS, 2L, 2W, 15' (4.5M) TO 24" (600MM) FROM PAVEMENT EDGE
- 701011-04 OFF-RD MOVING OPERATIONS, 2L, 2W, DAY ONLY
- 701201-04 LANE CLOSURE, 2L, 2W, DAY ONLY, FOR SPEEDS ≥ 45 MPH
- 701301-04 LANE CLOSURE, 2L, 2W SHORT TERM OPERATIONS
- 701306-04 LANE CLOSURE, 2L, 2W, SLOW MOVING OPERATIONS DAY ONLY, FOR SPEEDS ≥ 45 MPH
- 701311-03 LANE CLOSURE, 2L, 2W, MOVING OPERATIONS - DAY ONLY
- 701336-06 LANE CLOSURE, 2L, 2W WORK AREAS IN SERIES, FOR SPEEDS ≥ 45 MPH
- 701901-07 TRAFFIC CONTROL DEVICES
- 780001-05 TYPICAL PAVEMENT MARKINGS
- 781001-04 TYPICAL APPLICATIONS RAISED REFLECTIVE PAVEMENT MARKERS

GENERAL NOTES

1. ILLINOIS STATE LAW REQUIRES A 48-HOUR NOTICE TO BE GIVEN TO ALL UTILITIES WITHIN THE PROJECT AREA BEFORE DIGGING. FIELD MARKING OF FACILITIES MAY BE OBTAINED BY CONTACTING J.U.L.I.E. OR FOR NON-MEMBERS, THE UTILITY COMPANY DIRECTLY. AGENCIES KNOWN TO HAVE FACILITIES WITHIN THE PROJECT AREA ARE AS FOLLOWS:

UTILITY	ABOVE GROUND	BELOW GROUND
*AMEREN ILLINOIS	X	X
*EGYPTIAN ELECTRIC COOPERATIVE ASSOCIATION	X	X
*EGYPTIAN TELEPHONE COOP. ASSN.	X	X
*VILLAGE OF ELLIS GROVE		X
*VILLAGE OF EVANSVILLE		X
*FRONTIER COMMUNICATIONS	X	X
*NEWWAVE COMMUNICATIONS	X	X

MEMBERS OF J.U.L.I.E. CALL TOLL FREE (800)892-0123 OR 811 ARE INDICATED BY AN *. NON-J.U.L.I.E. MEMBERS MUST BE NOTIFIED INDIVIDUALLY.

2. THE CONTRACTOR AND THE ENGINEER SHALL BE AWARE THAT NO SURVEY WAS PERFORMED FOR THIS PROJECT, THE STATIONING, TOPOGRAPHY AND QUANTITIES SHOWN ON THESE PLANS WERE CREATED USING MICROFILM AND FIELD MEASUREMENTS. ALL SHALL BE ASSUMED TO BE APPROXIMATE. THE CONTRACTOR SHALL VERIFY DIMENSIONS AND CONDITIONS IN THE FIELD PRIOR TO CONSTRUCTION AND ORDERING OF MATERIALS.

3. PROPOSED PAVEMENT MARKING SHALL BE PLACED IN THE SAME LOCATION AS EXISTING AS DIRECTED BY THE ENGINEER.

4. NO OVERNIGHT LANE CLOSURES WILL BE PERMITTED.

5. A NOTCHED WEDGE LONGITUDINAL JOINT SHALL BE USED BETWEEN SUCCESSIVE PASSES OF HMA SURFACE COURSE THAT HAS A DIFFERENCE IN ELEVATION OF GREATER THAN 2 IN. BETWEEN LANES ON PAVEMENT THAT IS OPEN TO TRAFFIC. THE LONGITUDINAL JOINT SHALL BE CONSTRUCTED ACCORDING TO ARTICLE 406.06 OF THE STANDARD SPECIFICATIONS FOR ROAD AND BRIDGE CONSTRUCTION.

6. THE PAVEMENT WIDTH VARIES AND QUANTITIES WILL BE PAID ACCORDING TO EXACT WIDTHS AS MEASURED IN THE FIELD.

7. AN ESTIMATED QUANTITY OF 9888 TONS OF CUTTINGS FROM THE HOT-MIX ASPHALT SURFACE REMOVAL OPERATION IS ANTICIPATED. WIDTHS AS MEASURED IN THE FIELD.

8. ONLY REMOVAL FROM FINAL SURFACE SHALL BE PAID FOR AS SHORT TERM PAVEMENT MARKING REMOVAL.

9. THE QUALITY CONTROL FOR PERFORMANCE ITEMS AND QUANTITIES ARE AS FOLLOWS:
 LEVELING BINDER - 2582 TONS
 HMA SURFACE COURSE - 5164 TONS

10. THE THICKNESS OF THE HMA MIXTURE SHOWN ON THE PLANS IS THE NOMINAL THICKNESS. DEVIATIONS FROM THE NOMINAL THICKNESS WILL BE PERMITTED WHEN SUCH DEVIATIONS OCCUR DUE TO IRREGULARITIES IN THE EXISTING SURFACE OR BASE ON WHICH THE HMA MIXTURE IS PLACED.

11. "ROAD CONSTRUCTION AHEAD" SIGNS SHALL BE PLACED AT THE BEGINNING OF THE PROJECT PLUS AT ALL INTERSECTING SIDE ROADS AND WILL BE INCLUDED IN THE TRAFFIC CONTROL PAY ITEMS. ALL CONSTRUCTION SIGNS SHALL BE 48" FLUORESCENT ORANGE.

12. TWO CHANGEABLE MESSAGE SIGNS ARE INCLUDED TO BE PLACED AT BOTH ENDS OF THE PROJECT AS DIRECTED BY THE ENGINEER.

13. IF THE SURFACE REMOVAL ON THIS PROJECT PRODUCES A MILLED EDGE NEAR CENTERLINE GREATER THAN 1.5 INCHES BETWEEN ADJACENT OPEN LANES OF TRAFFIC, ONE OF THE FOLLOWING SHALL APPLY:
 * THE CONTRACTOR SHALL ORGANIZE THE WORK TO AVOID THE MILLED EDGE.
 * THE CONTRACTOR SHALL CONSTRUCT A TEMPORARY HOT-MIX ASPHALT WEDGE ALONG THE MILLED EDGE.
 * THE CONTRACTOR SHALL CONSTRUCT A MILLED SLOPED EDGE (MINIMUM 1:3) ALONG THE MILLED EDGE.
 THE COST OF THIS WORK SHALL BE INCLUDED IN THE COST PER SQUARE YARD FOR HOT-MIX ASPHALT SURFACE REMOVAL OF THE DEPTH SPECIFIED.

14. AN EMPTIED MATERIAL TRANSFER DEVICE IS ALLOWED OVER STRUCTURES SN 079-0005, SN 079-0036 AND SN 079-0037.

COMMITMENTS

NONE

MIXTURE REQUIREMENTS

ROUTE	FAP 312
SECTION	(72-1,74-3)RS-3
COUNTY	RANDOLPH
CONTRACT	76K32

DESCRIPTION	3P - RESURFACING AND PATCHING - IL 3 FROM 0.2 MI S OF S. PRAIRIE RD. TO 0.1 MI N OF ROOTS RD.
-------------	---

ADT (CONSTRUCTION YR):	3950
MU%	8.1
SU%	17.8
20 YR. ESAL'S:	2.72

MIXTURE USE	SURFACE	LEVELING BINDER	PATCHING
AC/PG	PG 64-22	PG 64-22	PG 64-22
RAP % (MAX)	SEE SPECIAL PROVISION	SEE SPECIAL PROVISION	SEE SPECIAL PROVISION
DESIGN AIR VOIDS	4.0% @ Ndes = 70	4.0% @ Ndes = 70	4.0% @ Ndes = 70
MIX COMPOSITION (GRADATION MIXTURE)	IL 9.5	IL 9.5FG	IL 19.0
FRICITION AGG	MIXTURE "C"	MIXTURE "C"	MIXTURE "B"
QUALITY MGMT PROGRAM	QCP	QCP	QC/QA

MIXTURE USE	SHOULDERS ≥ 2.25"
AC/PG	PG 64-22
RAP % (MAX)	SEE SPECIAL PROVISION
DESIGN AIR VOIDS	4.0% @ Ndes = 30
MIX COMPOSITION (GRADATION MIXTURE)	IL 19.0L
FRICITION AGG	
QUALITY MGMT PROGRAM	QC/QA

PLAN QUANTITIES FOR BITUMINOUS CONCRETE SURFACE COURSE ITEMS ARE CALCULATED USING A UNIT WEIGHT OF 112 LB/SQ YD/IN (59.8 KG/SQ M/25 MM THICKNESS).

80% FED
20% STATE

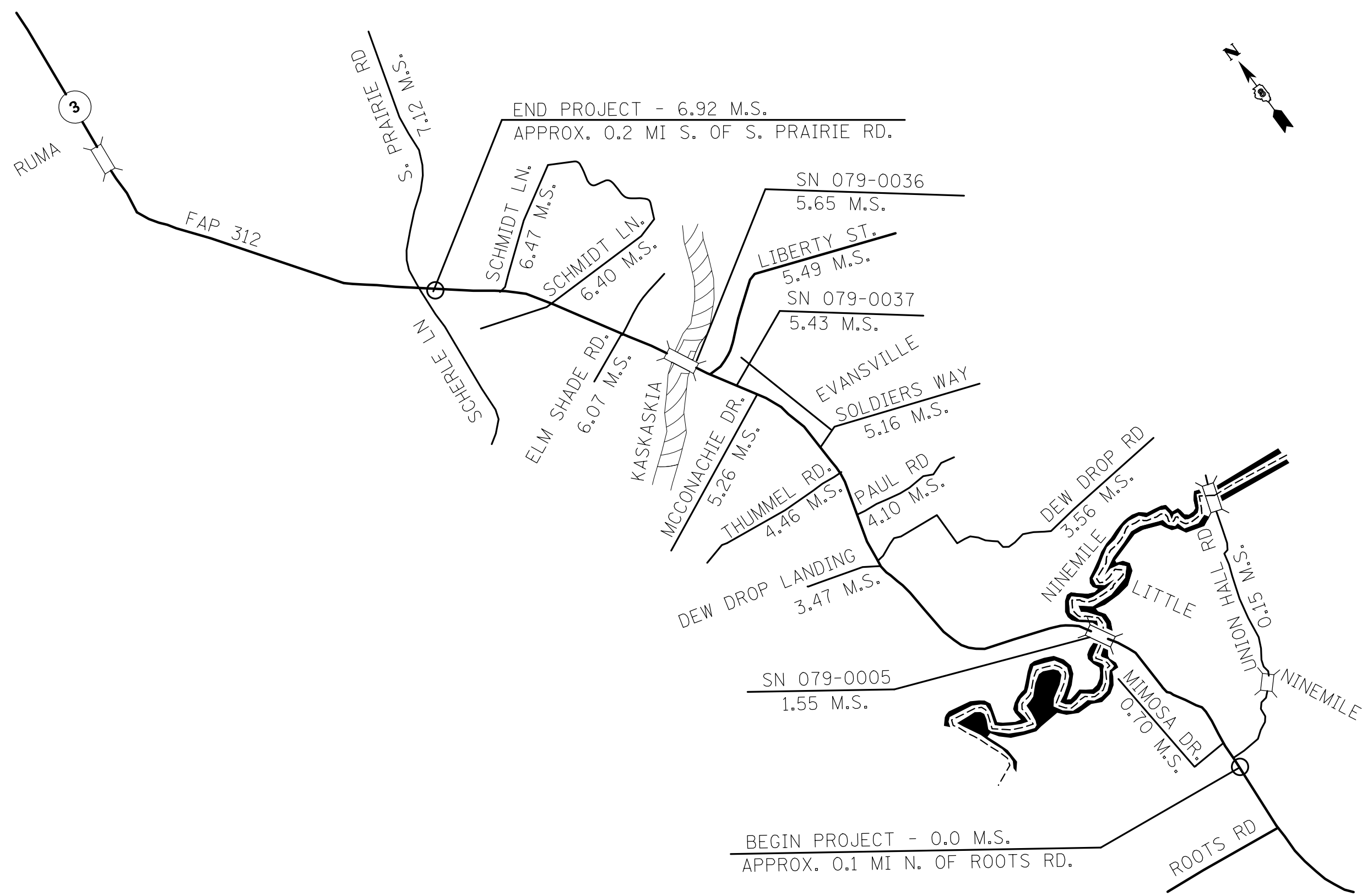
CONSTR. CODE

CODE NO.	ITEM	UNIT	TOTAL QUANTITY	CONSTR. CODE	
				ROADWAY	RURAL
78300200	RAISED REFLECTIVE PAVEMENT MARKER REMOVAL	EACH	446	446	
X4202005	DIAMOND GRINDING AND GROOVING (ROADWAY SECTION)	SQ YD	28021	28021	
X4405020	LONGITUDINAL PARTIAL DEPTH REMOVAL 2"	FOOT	691	691	
X4420900	LONGITUDINAL PARTIAL DEPTH PATCHING	TON	17	17	
X7030005	TEMPORARY PAVEMENT MARKING REMOVAL	SQ FT	34936	34936	
* X7830070	GROOVING FOR RECESSED PAVEMENT MARKING 5"	FOOT	23418	23418	
Z0033700	LONGITUDINAL JOINT SEALANT	FOOT	25133	25133	
∅ Z0076600	TRAINEES	HOUR	1000	1000	
Z0034105	MATERIAL TRANSFER DEVICE	TON	7746	7746	
∅ Z0076604	TRAINEES TRAINING PROGRAM GRADUATE	HOUR	1000	1000	
Z0070100	SURVEY MONUMENT COVER ASSEMBLY	EACH	5	5	

* SPECIALTY ITEM

∅ 0042

FILE NAME =	USER NAME = murraylo	DESIGNED -	REVISED -	STATE OF ILLINOIS DEPARTMENT OF TRANSPORTATION	SUMMARY OF QUANTITIES				F.A.P. RTE.	SECTION	COUNTY	TOTAL SHEETS	SHEET NO.
p:\11884EBID\INTEG.illinois.gov\PJ001\Documents\DOT Offices\District 8\Projects\DB76\DATA\6AD\sheet\0876K32-sht-plan.dwg		CHECKED -	REVISED -		312	(72-1,74-3)RS-3	RANDOLPH	17	4				
MODELNAME	PLOT SCALE = 100.0000' / in.	DATE -	REVISED -		SCALE: _____	SHEET 2 OF 2 SHEETS	STA. _____ TO STA. _____	CONTRACT NO. 76K32					
	PLOT DATE = 1/26/2018				ILLINOIS FED. AID PROJECT								

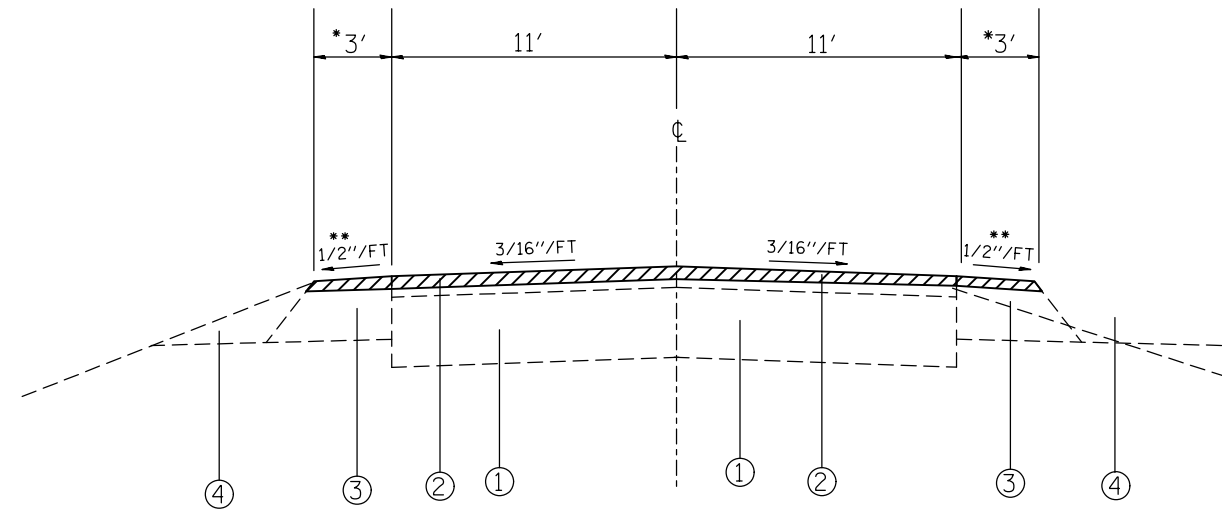


BEGIN PROJECT - 0.0 M.S.
APPROX. 0.1 MI N. OF ROOTS RD.

END PROJECT - 6.92 M.S.
APPROX. 0.2 MI S. OF S. PRAIRIE RD.

NOT TO SCALE

FILE NAME =	USER NAME = murrayda	DESIGNED - _____	REVISED - _____	STATE OF ILLINOIS DEPARTMENT OF TRANSPORTATION	LOCATION MAP		F.A.P. RTE.	SECTION	COUNTY	TOTAL SHEETS	SHEET NO.
pw:\IL\084EBIDINTEG.illinois.gov\PWIDOT\Documents\IDOT Offices\District 8\Projects\0875\KAWND\Drawings\6A0\Sheets\0875K32-sht-plan.dwg		DRAWN - _____	REVISED - _____		312	(72-1,74-3)RS-3	RANDOLPH	17	5		
MODELNAME		CHECKED - _____	REVISED - _____		SCALE: _____ SHEET 1 OF 1 SHEETS STA. _____ TO STA. _____		CONTRACT NO. 76K32				
		DATE - _____	REVISED - _____		ILLINOIS FED. AID PROJECT						

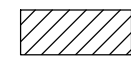


EXISTING

0.00 M.S. - 1.54 M.S.
 1.57 M.S. - 4.76 M.S.
 *5.40 M.S. - 5.42 M.S.
 *5.45 M.S. - 5.46 M.S.

* EXISTING SHOULDERS ARE 10' WIDE AND WITHIN THE CONCRETE APPROACH SECTION OF SN 079-0037. THESE SECTIONS WILL NOT INCLUDE AGGREGATE WEDGE SHOULDERS.

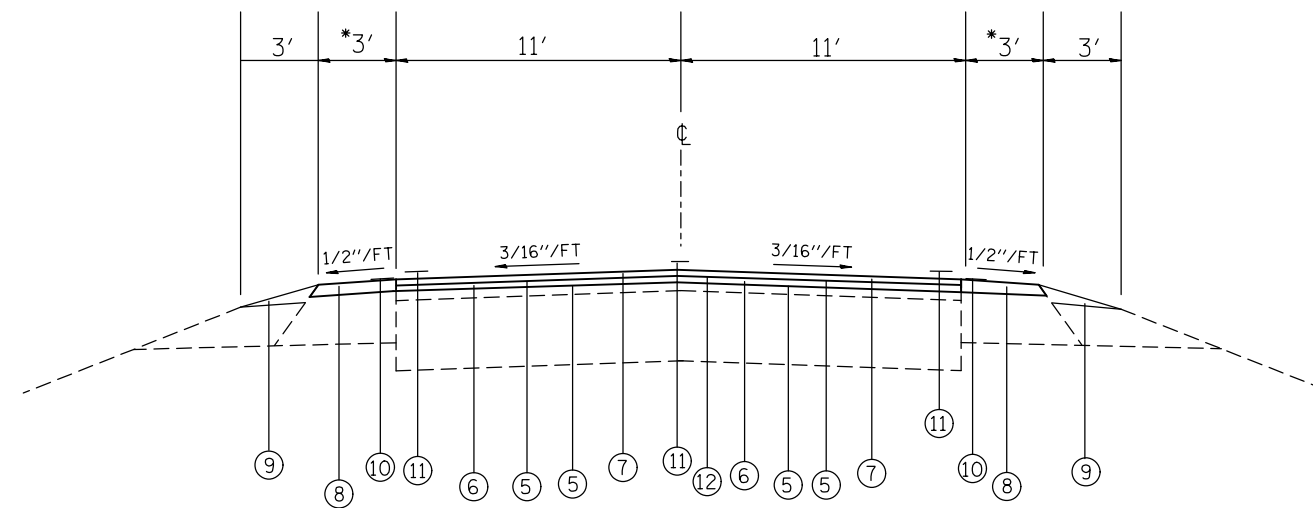
** CONCRETE GUTTER, TYPE A EXISTS:
 0.80 M.S. - 0.97 M.S. - NB
 0.90 M.S. - 0.97 M.S. - SB



HOT-MIX SURFACE REMOVAL, 2 1/4"

LEGEND

- ① EXISTING CONCRETE PAVEMENT, REINFORCED, 10"
- ② EXISTING RESURFACING, (VARIES 2 1/4" - 10 1/2")
- ③ EXISTING BITUMINOUS SHOULDER
- ④ EXISTING AGGREGATE SHOULDER, TYPE 4
- ⑤ PROPOSED BITUMINOUS (TACK COAT)
- ⑥ PROPOSED LEVELING BINDER, 3/4"
- ⑦ PROPOSED HOT-MIX ASPHALT SURFACE COURSE, 1 1/2"
- ⑧ PROPOSED BITUMINOUS SHOULDERS, 2 1/4"
- ⑨ PROPOSED AGGREGATE WEDGE SHOULDER, TY. B
- ⑩ PROPOSED 8" RUMBLE STRIP
- ⑪ PROPOSED PAVEMENT MARKING, LINE 4"
- ⑫ PROPOSED LONGITUDINAL JOINT SEALANT



PROPOSED

0.00 M.S. - 1.54 M.S.
 1.57 M.S. - 4.76 M.S.
 *5.40 M.S. - 5.42 M.S.
 *5.45 M.S. - 5.46 M.S.

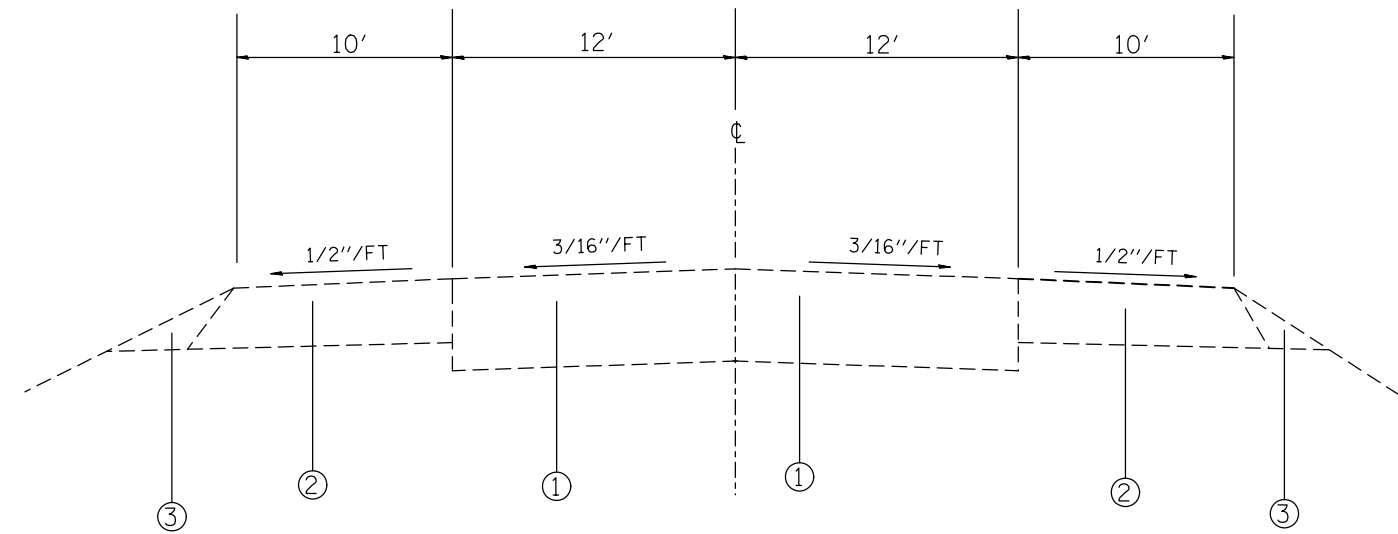
FILE NAME =	USER NAME = murrayda	DESIGNED - _____	REVISED - _____
pw:\IL\084EBIDINTEG.illinois.gov\PIDOT\Documents\DOT Offices\District 8\Projects\0875\DRAWING\DATA\EA0\Sheets\D876K32-sht-plan.dwg		CHECKED - _____	REVISED - _____
MODELNAME	PLOT DATE = 1/26/2018	DATE - _____	REVISED - _____

**STATE OF ILLINOIS
 DEPARTMENT OF TRANSPORTATION**

TYPICAL SECTIONS

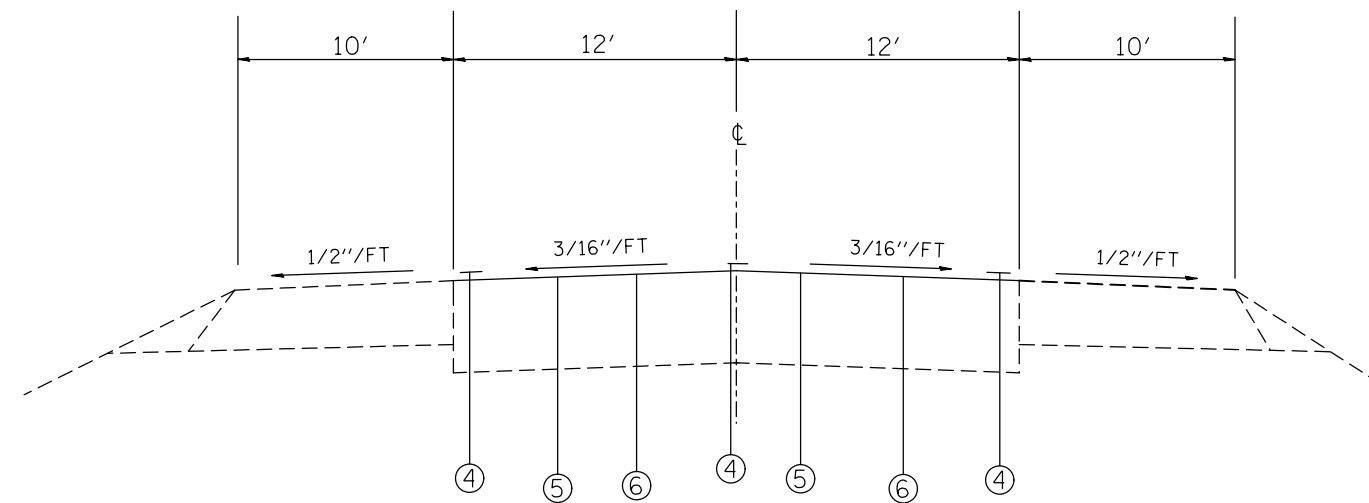
SCALE: _____ SHEET 1 OF 2 SHEETS STA. _____ TO STA. _____

F.A.P. RTE.	SECTION	COUNTY	TOTAL SHEETS	SHEET NO.
312	(72-1,74-3)RS-3	RANDOLPH	17	6
CONTRACT NO. 76K32			ILLINOIS FED. AID PROJECT	



EXISTING

4.76 M.S. - 5.40 M.S.
 5.46 M.S. - 5.59 M.S.
 5.70 M.S. - 6.92 M.S.



PROPOSED

4.76 M.S. - 5.40 M.S.
 5.46 M.S. - 5.59 M.S.
 5.70 M.S. - 6.92 M.S.

LEGEND

- ① EXISTING CONCRETE PAVEMENT, REINFORCED, 8"
- ② EXISTING BITUMINOUS SHOULDER
- ③ EXISTING AGGREGATE SHOULDER, TYPE 4
- ④ PROPOSED PAVEMENT MARKING, LINE 4"
- ⑤ PROPOSED DIAMOND GRINDING AND GROOVING
- ⑥ PROPOSED PROTECTIVE COAT

FILE NAME =	USER NAME = murrayda	DESIGNED - _____	REVISED - _____
pw:\IL\084EBIDINTEG.illinois.gov\PIDOT\Documents\DOT Offices\District 8\Projects\0875\DRAWING\DATA\EA0\Sheets\0875K32-sht-plan.dwg		CHECKED - _____	REVISED - _____
\$MODELNAME\$	PLOT DATE = 1/26/2018	DATE - _____	REVISED - _____

**STATE OF ILLINOIS
 DEPARTMENT OF TRANSPORTATION**

TYPICAL SECTIONS

SCALE: _____ SHEET 2 OF 2 SHEETS STA. _____ TO STA. _____

F.A.P. RTE.	SECTION	COUNTY	TOTAL SHEETS	SHEET NO.
312	(72-1,74-3)RS-3	RANDOLPH	17	7
CONTRACT NO. 76K32			ILLINOIS FED. AID PROJECT	

RESURFACING SCHEDULE

MILE STATION TO MILE STATION			DIMENSION	HMA SURFACE REMOVAL 2 1/4"	BITUMINOUS MATERIALS (TACK COAT)	LONGITUDINAL JOINT SEALANT	LEVELING BINDER (MM), N70	HMA SURFACE COURSE, MIX C, N70	DIAMOND GRINDING AND GROOVING	PROTECTIVE COAT	HMA SHOULDERS	SHOULDER RUMBLE STRIPS 8"	AGGREGATE WEDGE SHOULDER TYPE B
			WIDTH										
			FOOT	SQ YD	POUND	FOOT	TON	TON	SQ YD	SQ YD	TON	FOOT	TON
MAINLINE													
0.00	-	1.54	22	19876	13416	8131	834.8	1669.6					
1.57	-	4.76	22	41172	27791	16843	1729.2	3458.5					
4.76	-	5.40	24						9012	9012			
5.40	-	5.42	24	282	190	106	11.8	23.7					
5.45	-	5.46	24	141	95	53	5.9	11.8					
5.46	-	5.59	24						1831	1831			
5.70	-	6.92	24						17178	17178			
SHOULDERS													
0.00	-	1.54	3	5421							683.0	16262	474.3
1.57	-	4.76	3	11229							1414.8	33686	982.5
4.76	-	5.40	10										
5.40	-	5.42	10	235							29.6		
5.45	-	5.46	10	117							14.8		
5.46	-	5.59	10										
5.70	-	6.92	10										
TOTAL:				78473	41493	25133	2582	5164	28021	28021	2143	49949	1457

PATCHING SCHEDULE						
DIR	MILE STATION	DIMENSIONS		CLASS B PATCHES, 9"	SAW CUTS	DOWEL BARS 1 1/2"
		LTH	WTH	TY-II		
		FOOT	FOOT	SQ YD	FOOT	EACH
SB	4.76	8	12	11	52	20
SB	4.77	8	12	11	52	20
SB	4.83	8	12	11	52	20
NB	4.90	6	12	8	48	20
SB	4.93	8	12	11	52	20
NB	5.03	6	12	8	48	20
SB	5.03	8	12	11	52	20
NB	5.08	6	12	8	48	20
SB	5.08	6	12	8	48	20
NB	5.10	8	12	11	52	20
NB	5.13	8	12	11	52	20
NB	5.20	8	12	11	52	20
SB	5.25	6	12	8	48	20
NB	5.30	6	12	8	48	20
SB	5.30	6	12	8	48	20
NB	5.63	6	12	8	48	20
SB	5.63	8	12	11	52	20
NB	5.65	6	12	8	48	20
SB	5.65	6	12	8	48	20
SB	5.70	6	12	8	48	20
SB	5.73	6	12	8	48	20
NB	5.75	6	12	8	48	20
SB	5.90	6	12	8	48	20
NB	5.95	8	12	11	52	20
SB	5.95	8	12	11	52	20
SB	6.00	6	12	8	48	20
NB	6.03	6	12	8	48	20
NB	6.05	10	12	13	56	20
SUBTOTAL (1)				259	1396	560

NB - NORTHBOUND
SB - SOUTHBOUND

PATCHING SCHEDULE						
DIR	MILE STATION	DIMENSIONS		CLASS B PATCHES, 9"	SAW CUTS	DOWEL BARS 1 1/2"
		LTH	WTH	TY-II		
		FOOT	FOOT	SQ YD	FT	EACH
SB	6.10	6	12	8	48	20
SB	6.13	6	12	8	48	20
NB	6.20	6	12	8	48	20
NB	6.23	6	12	8	48	20
SB	6.23	6	12	8	48	20
NB	6.25	6	12	8	48	20
SB	6.25	6	12	8	48	20
NB	6.28	6	12	8	48	20
SB	6.28	6	12	8	48	20
SB	6.30	6	12	8	48	20
SB	6.33	6	12	8	48	20
NB	6.35	6	12	8	48	20
SB	6.35	6	12	8	48	20
SB	6.40	8	12	11	52	20
NB	6.45	6	12	8	48	20
SB	6.48	6	12	8	48	20
SB	6.49	6	12	8	48	20
SB	6.50	6	12	8	48	20
NB	6.53	8	12	11	52	20
SB	6.55	6	12	8	48	20
NB	6.60	6	12	8	48	20
NB	6.63	6	12	8	48	20
SB	6.63	6	12	8	48	20
NB	6.65	6	12	8	48	20
NB	6.70	6	12	8	48	20
NB	6.73	6	12	8	48	20
SB	6.73	6	12	8	48	20
SUBTOTAL (2)				221	1304	540
SUBTOTAL (1+2)				480	2700	1100
12% SUBTOTAL*				58	324	132
TOTAL				538	3024	1232

*NOTE: AN ADDITIONAL 12% HAS BEEN ADDED TO THE FINAL PATCHING QUANTITY TO ALLOW FOR WINTER DAMAGE.

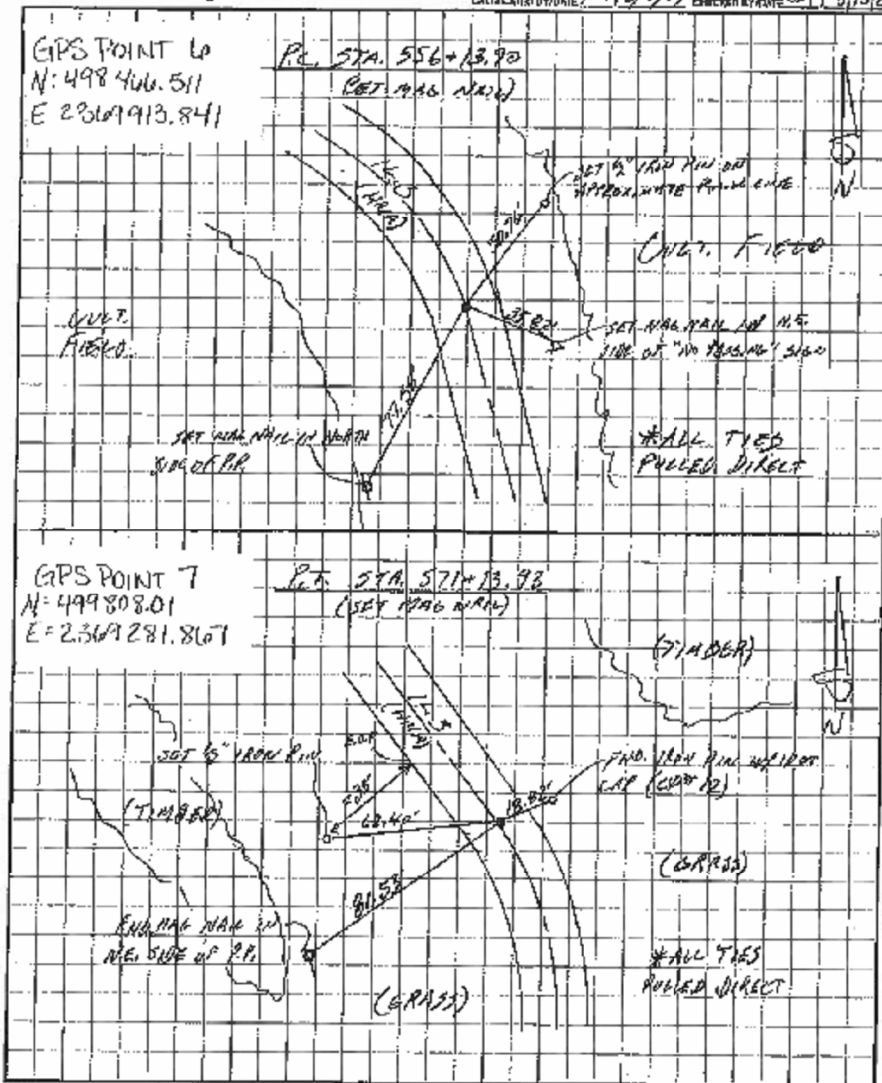
PAVEMENT MARKING SCHEDULE

STATION TO STATION	LENGTH	SHORT TERM PAVEMENT MARKING		TEMPORARY PAVEMENT MARKING				RAISED REFLECTIVE PAVEMENT MARKER REMOVAL	RAISED REFLECTIVE PAVEMENT MARKERS CRYSTAL	THERMOPLASTIC PAVEMENT MARKING				GROOVING FOR RECESSED PAVEMENT MARKING 5"	PREFORMED PLASTIC PAVEMENT MARKING		SHORT TERM PAVEMENT MARKING REMOVAL	TEMPORARY PAVEMENT MARKING REMOVAL
		4" SKIP-DASH YELLOW	4" SOLID WHITE	4" SKIP-DASH YELLOW	NO PASSING ZONE		4" SOLID WHITE			4" SKIP-DASH YELLOW	NO PASSING ZONE		4" SOLID WHITE		4" SKIP-DASH YELLOW			
		FT	FOOT	FOOT	FOOT	DIR	FOOT			EACH	EACH	FOOT	FOOT		DIR	FOOT		
0.00 - 0.15	788	240	1576	200				10	10	1576	200						40	592
0.15 - 0.16	61	30	61	20				1	1	61	20						5	28
0.16 - 0.30	716	210	1432	180				9	9	1432	180						35	538
0.30 - 0.54	1273	360	2546	320	NB	1273		16	16	2546	320	NB	1273				60	1380
0.54 - 0.57	172	60	344		BOTH	344		2	2	344		BOTH	344				10	230
0.57 - 0.69	647	180	1295	170	SB	647		8	8	1295	170	SB	647				30	705
0.69 - 0.71	71	30	71		BOTH	142		1	1	71		BOTH	142				5	71
0.71 - 0.78	382	120	764		BOTH	764		5	5	764		BOTH	764				20	510
0.78 - 0.88	560	180	1120	140	NB	560		7	7	1120	140	NB	560				30	607
0.88 - 0.95	368	120	735		BOTH	735		5	5	735		BOTH	735				20	491
0.95 - 1.12	876	240	1752	220	SB	876		11	11	1752	220	SB	876				40	950
1.12 - 1.15	158	60	317		BOTH	317		2	2	317		BOTH	317				10	212
1.15 - 1.32	898	270	1795	230	NB	898		11	11	1795	230	NB	898				45	975
1.32 - 1.33	53	30	106		BOTH	106		1	1	106		BOTH	106				5	71
1.33 - 1.54	1109	330	2218	280	SB	1109		14	14	2218	280	SB	1109				55	1203
1.54 - 1.57	106	30	211	30	SB	106		1	1	211	30	SB	106				5	116
1.57 - 1.59	158	60	317	40				2	2	317	40						10	119
1.59 - 1.62	1109	330	2218	280	SB	1109		14	14	2218	280	SB	1109				55	1203
1.62 - 1.83	739	210	1478		BOTH	1478		9	9	1478		BOTH	1478				35	986
1.83 - 1.97	1003	300	2006	260	SB	1003		13	13	2006	260	SB	1003				50	1090
1.97 - 2.16	158	60	317	40				2	2	317	40						10	119
2.16 - 2.19	1109	330	2218	280	NB	1109		14	14	2218	280	NB	1109				55	1203
2.19 - 2.40	2165	600	4330		BOTH	4330		27	27	4330		BOTH	4330				100	2887
2.40 - 2.81	1056	300	2112	270	SB	1056		13	13	2112	270	SB	1056				50	1146
2.81 - 3.01	950	270	1901	240				12	12	1901	240						45	714
3.01 - 3.19	370	120	739	100	NB	370		5	5	739	100	NB	370				20	403
3.19 - 3.26	792	240	1584		BOTH	1584		10	10	1584		BOTH	1584				40	1056
3.26 - 3.41	317	90	634	80	SB	317		4	4	634	80	SB	317				15	344
3.41 - 3.47	53	30	53	20	SB	53		1	1	53	20	SB	53				5	42
3.47 - 3.48	370	120	739	100	SB	370		5	5	739	100	SB	370				20	403
3.48 - 3.55	53	30	53	20	SB	53		1	1	53	20	SB	53				5	42
3.55 - 3.56	53	30	53	20	SB	53		1	1	53	20	SB	53				5	42
3.56 - 3.60	211	60	422	60	SB	211		3	3	422	60	SB	211				10	232
3.60 - 3.63	158	60	317		BOTH	317		2	2	317		BOTH	317				10	212
3.63 - 3.73	528	150	1056	140	SB	528		7	7	1056	140	SB	528				25	575
3.73 - 3.81	422	120	845	110				5	5	845	110						20	319
3.81 - 3.81	739	210	1478	190	SB	739		9	9	1478	190	SB	739				35	803
3.81 - 3.95	317	90	634	80				4	4	634	80						15	238
3.95 - 4.01	422	120	845	110	NB	422		5	5	845	110	NB	422				20	460
4.01 - 4.09	53	30	53	20	NB	53		1	1	53	20	NB	53				5	42
4.09 - 4.10	370	120	739	100	NB	370		5	5	739	100	NB	370				20	403
4.10 - 4.17	1214	360	2429	310	NB	1214		15	15	2429	310	NB	1214				60	1318
4.17 - 4.40	106	30	211	30				1	1	211	30						5	81
4.40 - 4.42	211	60	422	60	SB	211		3	3	422	60	SB	211				10	232
4.42 - 4.46	53	30	53	20	SB	53		1	1	53	20	SB	53				5	42
4.46 - 4.47	686	210	1373	180	SB	686		9	9	1373	180	SB	686				35	747
4.47 - 4.60	158	60	317	40				2	2	317	40						10	119
4.60 - 4.63	686	210	1373	180	SB	686		9	9	1373	180	SB	686				35	747
4.63 - 4.76	2059	355	4118	520				26	26					4638	4118	520	128	1547
4.76 - 5.15	53	14	53	20				1	1					73	53	20	5	25
5.15 - 5.16	53	14	53	20				1	1					126	106	20	5	42
5.16 - 5.17	53	14	53	20				1	1					73	53	20	5	25
5.17 - 5.18	422	74	845	110				5	5					955	845	110	27	319
5.18 - 5.26	53	14	53	20				1	1					73	53	20	5	25
5.26 - 5.27	686	125	1373	180				9	9					1553	1373	180	45	518
5.27 - 5.40	106	38	211	30				1	1	211	30						14	81
5.40 - 5.45	53	34	106	20				1	1	106	20						13	42
5.45 - 5.46	106	18	211	30				1	1					241	211	30	7	81
5.46 - 5.48	53	14	53	20				1	1					73	53	20	5	25
5.48 - 5.49	53	14	53	20				1	1					126	106	20	5	42
5.49 - 5.50	53	14	53	20				1	1					73	53	20	5	25
5.50 - 5.51	422	74	845	110				5	5					955	845	110	27	319
5.51 - 5.70	3643	631	7286	920				46	46					8206	7286	920	228	2736
5.70 - 6.39	53	14	53	20				1	1					73	53	20	5	25
6.39 - 6.40	2746	470	5491	690				34	34					6181	5491	690	170	2061
6.40 -																		
SUBTOTAL		9433	70620	7920		26197		446	446	49923	5200		26197	23418	20698	2720	1953	34944
TOTAL		9433	104737						446	446	81320			23418	23418		1953	34944

* THE QUANTITY OF SHORT TERM PAVEMENT MARKING AT THESE LOCATIONS ALSO INCLUDES DIAGONALS FOR 10' SHOULDER.

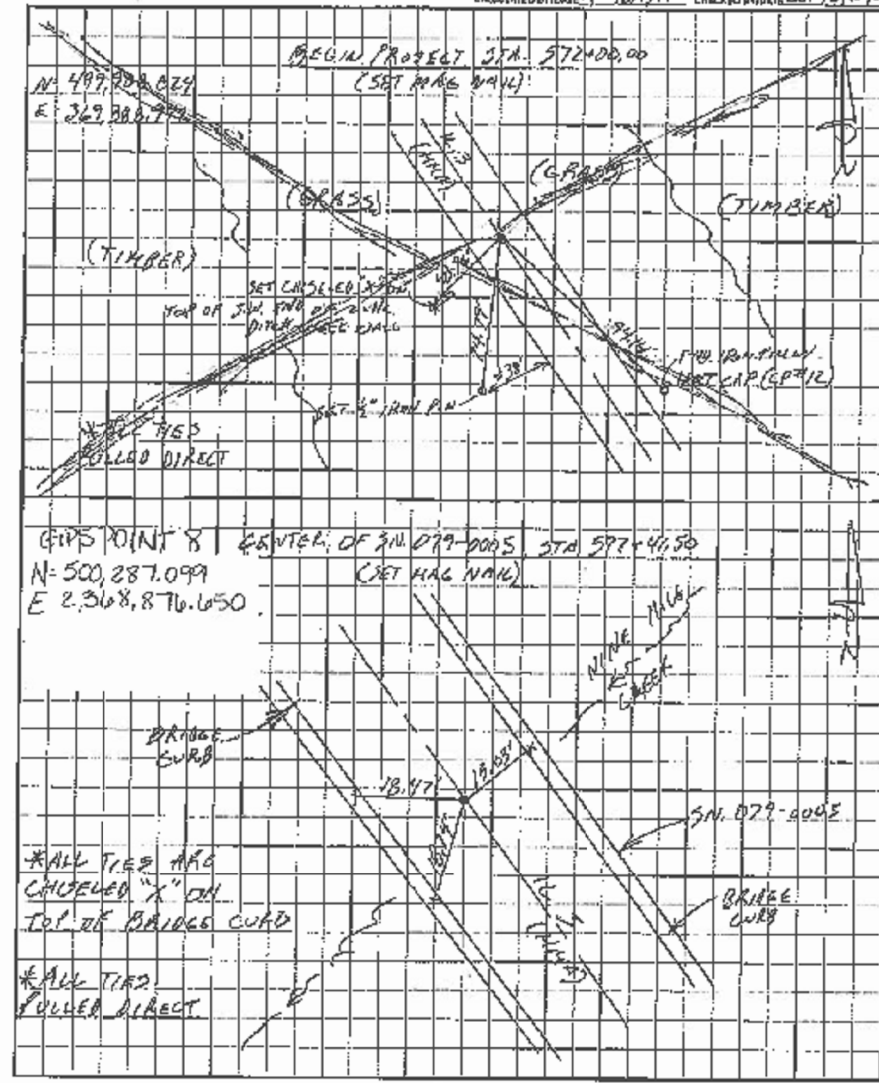
McDonough-Whitlow, P.C.
 138 E. Wood Street
 Hillsboro, IL 62049
 217.532.9233 P
 217.532.6300 F
 www.mcdonough-whitlow.com

SHEET 20 OF 27
 N.W. JOB 15-052-10
 CLIENT JOB DOT DB, D-98-043-17
 ROUTE SECTION/ROWWAY 16.3 OVER NINE MILE CREEK
 CALCULATED BY DATE 1-23-17 CHECKED BY DATE JST, 3/15/2017



McDonough-Whitlow, P.C.
 138 E. Wood Street
 Hillsboro, IL 62049
 217.532.9233 P
 217.532.6300 F
 www.mcdonough-whitlow.com

SHEET 21 OF 27
 N.W. JOB 15-052-10
 CLIENT JOB DOT DB, D-98-043-17
 ROUTE SECTION/ROWWAY 16.3 OVER NINE MILE CREEK
 CALCULATED BY DATE 1-23-17 CHECKED BY DATE JST, 3/15/2017



FILE NAME =	USER NAME = murrayda	DESIGNED -	REVISED -
pw:\IL084EBIDINTEG\illinois.gov\PIDOT\Documents\DOT Offices\District 8\Projects\0875\DRAWING\DATA\60\Sheets\0875K32-sht-plan.dwg		CHECKED -	REVISED -
		DATE -	REVISED -
#MODELNAME#	PLOT DATE = 1/26/2018		

STATE OF ILLINOIS
 DEPARTMENT OF TRANSPORTATION

SURVEY MONUMENT LOCATIONS

SCALE: _____ SHEET 4 OF 5 SHEETS STA. _____ TO STA. _____

F.A.P. RTE.	SECTION	COUNTY	TOTAL SHEETS	SHEET NO.
312	(72-1,74-3)RS-3	RANDOLPH	17	16
CONTRACT NO. 76K32				
ILLINOIS FED. AID PROJECT				

