

STATE OF ILLINOIS
 DEPARTMENT OF TRANSPORTATION
 DIVISION OF HIGHWAYS
**PROPOSED
 HIGHWAY PLANS**

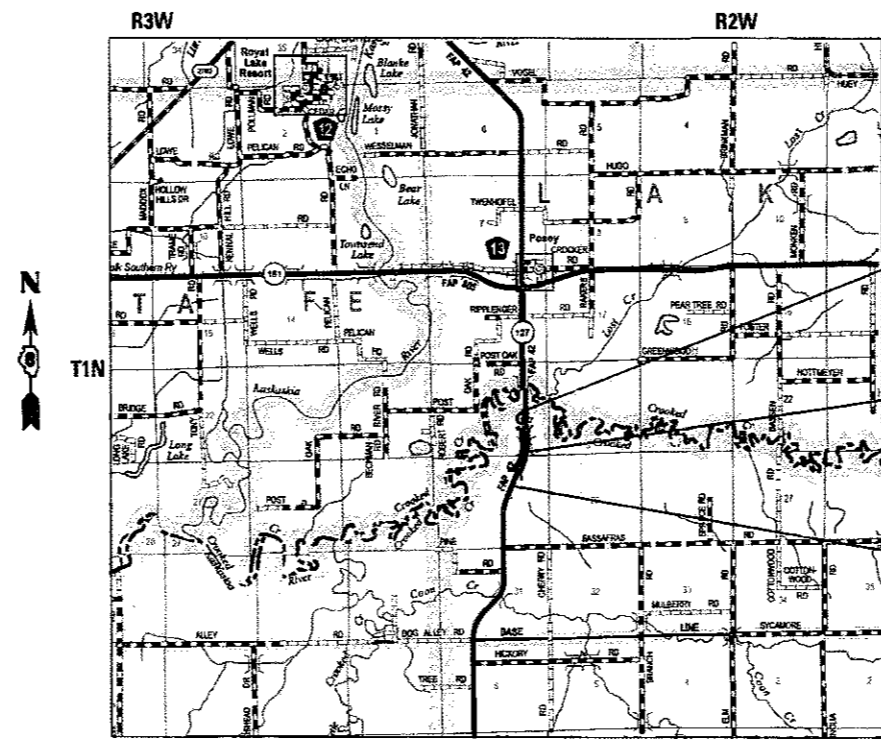
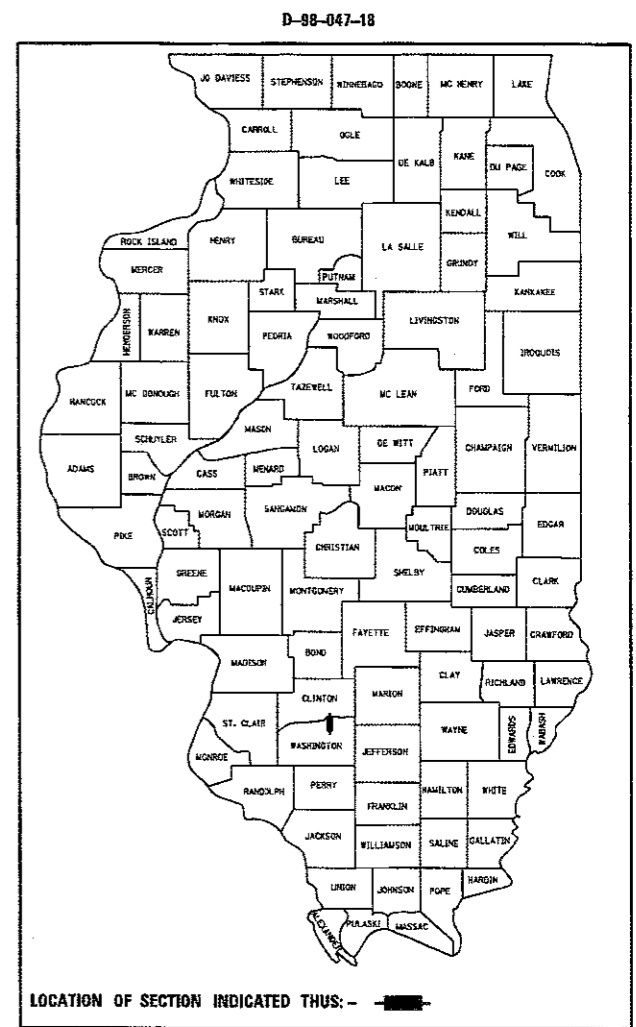
FAP ROUTE 42 (IL RTE. 127)
 SECTION 1B-R-1
 PROJECT STP-V1XD(878)
 BRIDGE REPAIR, JOINT REPAIR &
 DECK WATERPROOFING
 WASHINGTON COUNTY

C-98-190-18

* 23 + 4 = 27 TOTAL SHEETS

F.A.P. RTE.	SECTION	COUNTY	TOTAL SHEETS	SHEET NO.
42	1B-R-1	WASHINGTON	23	1
ILLINOIS			CONTRACT NO. 76L36	

FOR INDEX OF SHEETS AND
 LIST OF HIGHWAY STANDARDS
 SEE SHEET NO. 2

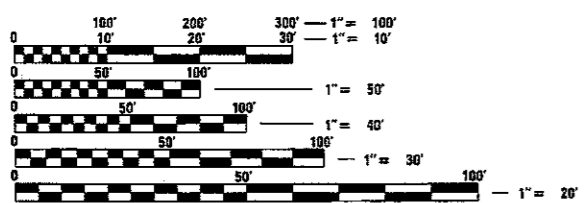


BEGIN SECTION 1B-R-1
 STATION 396 + 77.00

STATION 402 + 51.23, IL RTE. 127
 STRUCTURE OVER CROOKED CREEK
 OVERFLOW, SN 095-0023

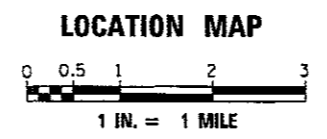
END SECTION 1B-R-1
 STATION 408 + 26.34

FUNCTIONAL CLASSIFICATION:	MINOR ARTERIAL
2017 ADT:	2700 (ACTUAL)
2037 ADT:	3200 (EST)
MU:	10%
SU:	7%



FULL SIZE PLANS HAVE BEEN PREPARED USING STANDARD
 ENGINEERING SCALES. REDUCED SIZED PLANS WILL NOT
 CONFORM TO STANDARD SCALES. IN MAKING MEASUREMENTS
 ON REDUCED PLANS, THE ABOVE SCALES MAY BE USED.

J.U.L.I.E.
 JOINT UTILITY LOCATION INFORMATION FOR EXCAVATION
 1-800-892-0123
 OR 811



GROSS LENGTH = 1149.34 FT. = 0.218 MILE
 NET LENGTH = 1149.34 FT. = 0.218 MILE



Cindy Travis Mueller 1/17/18
 CINDY TRAVIS MUELLER, P.E.
 LICENSED PROFESSIONAL ENGINEER
 ILLINOIS NO. 062-046699
 EXPIRES: 11-30-2019

STATE OF ILLINOIS
 DEPARTMENT OF TRANSPORTATION

SUBMITTED *Jan 22, 2018*
Jeffrey Z. Kan...
 REGIONAL ENGINEER

Mar 23, 2018
...
 ENGINEER OF DESIGN AND ENVIRONMENT

Mar 23, 2018
Paul P. ...
 DIRECTOR OF HIGHWAYS PROJECT IMPLEMENTATION

PRINTED BY THE AUTHORITY
 OF THE STATE OF ILLINOIS

REV. 4-18-2018

PROJECT ENGINEER TIM PADGETT (618) 346-3325
 PROJECT MANAGER MESERET SIMA (618) 346-3141

CONTRACT NO. 76L36

INDEX OF SHEETS

- 1. COVER SHEET
- 2. INDEX OF SHEETS & GENERAL NOTES
- 3.-6. SUMMARY OF QUANTITIES
- 7. TYPICAL SECTIONS
- * 8. SCHEDULES OF QUANTITIES * INCLUDES SHEET 8A
- ** 9. PLAN SHEET ** INCLUDES SHEETS 9A - 9C
- 10. WIDTH RESTRICTION SIGNING PLAN
- 11. DETAILS
- 12.-23. BRIDGE PLANS

HIGHWAY STANDARDS

- 000001-06 STANDARD SYMBOLS, ABBREVIATIONS AND PATTERNS
- 001001-02 AREAS OF REINFORCEMENT BARS
- 001006 DECIMAL OF AN INCH AND A FOOT
- 701201-04 LANE CLOSURE, 2 LANE, 2 WAY, DAY ONLY, FOR SPEEDS ≥45 MPH
- 701301-04 LANE CLOSURE, 2 LANE, 2 WAY, SHORT TIME OPERATIONS
- 701306-04 LANE CLOSURE, 2 LANE, 2 WAY, SLOW MOVING OPERATIONS, DAY ONLY, FOR SPEEDS ≥45 MPH
- 701311-03 LANE CLOSURE, 2 LANE, 2 WAY, MOVING OPERATIONS, DAY ONLY
- 701321-17 LANE CLOSURE, 2 LANE, 2 WAY, BRIDGE REPAIR WITH BARRIER
- 701326-04 LANE CLOSURE, 2 LANE, 2 WAY, PAVEMENT WIDENING FOR SPEEDS ≥45 MPH
- 701901-07 TRAFFIC CONTROL DEVICES
- 704001-08 TEMPORARY CONCRETE BARRIER
- 780001-05 TYPICAL PAVEMENT MARKINGS
- 781001-04 TYPICAL APPLICATIONS RAISED REFLECTIVE PAVEMENT MARKERS

THE FOLLOWING MIXTURE REQUIREMENTS ARE APPLICABLE FOR THIS PROJECT:

MIXTURE USE	POLY SURFACE	BASE CSE WIDE
AC/PG	SBS PG 76-22	PG 64-22
RAP % (MAX)	SEE SPECIAL PROVISION	SEE SPECIAL PROVISION
DESIGN AIR VOIDS	4.0% @ Ndes=70	4.0% @ Ndes=70
MIX COMPOSITION (GRADATION)	IL 9.5	IL 19.0
FRICTION AGG	MIXTURE "D"	
QUALITY MGMT PROGRAM	QC/QA	QC/QA

MIXTURE USE	SHOULDERS ≥ 2.25"	SHOULDERS < 2.25"
AC/PG	PG 64-22	PG 64-22
RAP % (MAX)	SEE SPECIAL PROVISION	SEE SPECIAL PROVISION
DESIGN AIR VOIDS	4.0% @ Ndes=30	4.0% @ Ndes=30
MIX COMPOSITION (GRADATION)	IL 19.0L	IL 9.5L
FRICTION AGG		
QUALITY MGMT PROGRAM	QC/QA	QC/QA

PLAN QUANTITIES FOR BITUMINOUS CONCRETE SURFACE COURSE ITEMS ARE CALCULATED USING A UNIT WEIGHT OF 112 LBS/SQ YD/IN (59.8 KG/SQ M/25 MM THICKNESS)

GENERAL NOTES

1. ILLINOIS STATE LAW REQUIRES A 48-HOUR NOTICE BE GIVEN TO ALL UTILITIES BEFORE DIGGING. FIELD MARKING OF FACILITIES MAY BE OBTAINED BY CONTACTING J.U.L.I.E. OR FOR NON-MEMBERS, THE UTILITY COMPANY DIRECTLY. AGENCIES KNOWN TO HAVE FACILITIES WITHIN THE PROJECT AREA ARE AS FOLLOWS:

	ABOVE	BELOW
	GROUND	GROUND
*TRI-COUNTY ELECTRIC COOPERATIVE, INC.	X	X
- MEMBERS OF J.U.L.I.E. (800)-892-0123 OR 811 ARE INDICATED BY *. NON J.U.L.I.E. MEMBERS MUST BE NOTIFIED INDIVIDUALLY.
2. THE CONTRACTOR AND ENGINEER SHALL BE AWARE THAT NO SURVEY WAS PERFORMED FOR THIS PROJECT. THE STATIONING AND TOPOGRAPHY SHOWN IN THE PLANS WERE CREATED USING RECORD PLANS AND FIELD MEASUREMENTS MADE BY DESIGN PERSONNEL. BOTH SHALL BE ASSUMED TO BE APPROXIMATE.
3. THE CONTRACTOR SHALL VERIFY ALL DIMENSIONS AND CONDITIONS IN THE FIELD PRIOR TO CONSTRUCTION AND ORDERING OF MATERIALS.
4. THE THICKNESS OF THE BITUMINOUS MIXTURE SHOWN ON THE PLANS IS THE NOMINAL THICKNESS. DEVIATIONS FROM THE NOMINAL THICKNESS WILL BE PERMITTED WHEN SUCH DEVIATIONS OCCUR DUE TO IRREGULARITIES IN THE EXISTING SURFACE OR BASE ON WHICH THE BITUMINOUS MIXTURE IS PLACED.
5. THE PROPOSED PAVEMENT MARKING SHALL MATCH THE LOCATIONS OF THE EXISTING PAVEMENT MARKINGS, AS DIRECTED BY THE ENGINEER.
6. THE HMA OVERLAY ON THE BRIDGE APPROACH SHOULDER PAVEMENT SHALL BE HAND GRADED TO PROMOTE DRAINAGE INTO THE EXISTING INLET GRATES AT NO ADDITIONAL COST TO THE CONTRACT.

COMMITMENTS

NONE

FILE NAME: P:\Projects\634488 - RTB 176-19 DB Ver Ph. I and II\634488 - MD\CAD\DWG\000 - Drawings\000 Sheets\007\03-14-17\index.dwg

△ REV. 4-18-2018

USER NAME = default PLOT SCALE = 40,0000' / in. PLOT DATE = 1/17/2018	DESIGNED - DRAWN - CHECKED - DATE -	REVISED - REVISED - REVISED - REVISED -	STATE OF ILLINOIS DEPARTMENT OF TRANSPORTATION	INDEX OF SHEETS AND GENERAL NOTES	F.A.P. RTE. 42	SECTION 1B-R-1	COUNTY WASHINGTON	TOTAL SHEETS 23	SHEET NO. 2
SCALE: N/A				SHEET 1 OF 1 SHEETS	STA. N/A TO STA. N/A		CONTRACT NO. 76L36		
ILLINOIS FED. AID PROJECT									

FILE NAME: P:\Projects\634400 - PTB 176-19 DB Yr. Pl. End - I:\634400 - MD A\CADD\CADD Drawings\CADD Sheets\0676L36-INT-500.dgn

CODE NO.	ITEM	UNIT	80% FED 20% STATE	
			TOTAL QUANTITY	CONSTR. CODE
				BRIDGE 0047 RURAL
20200600	EXCAVATING AND GRADING EXISTING SHOULDER	UNIT	4	4
35600716	HOT-MIX ASPHALT BASE COURSE WIDENING, 10"	SQ YD	200	200
40600295	POLYMERIZED BITUMINOUS MATERIALS (TACK COAT)	POUND	1634	1634
40600982	HOT-MIX ASPHALT SURFACE REMOVAL - BUTT JOINT	SQ YD	107	107
40603540	POLYMERIZED HOT-MIX ASPHALT SURFACE COURSE, MIX "D", N70	TON	266	266
44004250	PAVED SHOULDER REMOVAL	SQ YD	153	153
50102400	CONCRETE REMOVAL	CU YD	18.7	18.7
50300225	CONCRETE STRUCTURES	CU YD	2.3	2.3
50300255	CONCRETE SUPERSTRUCTURE	CU YD	21.5	21.5
50606701	CLEANING AND PAINTING STRUCTURAL STEEL, LOCATION 1	L SUM	1	1
50800205	REINFORCEMENT BARS, EPOXY COATED	POUND	2570	2570
50800515	BAR SPLICERS	EACH	56	56
52000050	PREFORMED JOINT SEAL 4"	FOOT	136.5	136.5
58100200	WATERPROOFING MEMBRANE SYSTEM	SQ YD	3167	3167
63000001	STEEL PLATE BEAM GUARDRAIL, TYPE A, 6 FOOT POSTS	FOOT	300	300



REV. 4-18-2018

USER NAME: default	DESIGNED: -	REVISED: -
PLOT SCALE: 100.0000' / 1"	DRAWN: -	REVISED: -
PLOT DATE: 1/17/2018	CHECKED: -	REVISED: -
	DATE: -	REVISED: -

**STATE OF ILLINOIS
DEPARTMENT OF TRANSPORTATION**

SUMMARY OF QUANTITIES			
SCALE: N/A	SHEET 1	OF 4 SHEETS	STA. N/A TO STA. N/A

F.A.P. RTE.	SECTION	COUNTY	TOTAL SHEETS	SHEET NO.
42	1B-R-1	WASHINGTON	23	3
CONTRACT NO. 76L36			ILLINOIS FED. AID PROJECT	

CODE NO.	ITEM	UNIT	TOTAL QUANTITY	CONSTR. CODE	
				BRIDGE 0047	RURAL
63100167	TRAFFIC BARRIER TERMINAL, TYPE 1 (SPECIAL) TANGENT	EACH	4	4	
67000400	ENGINEER'S FIELD OFFICE, TYPE A	CAL MO	10	10	
63200310	GUARDRAIL REMOVAL	FOOT	600	600	
67100100	MOBILIZATION	L SUM	1	1	
70100405	TRAFFIC CONTROL AND PROTECTION, STANDARD 701321	EACH	1	1	
70100450	TRAFFIC CONTROL AND PROTECTION, STANDARD 701201	L SUM	1	1	
70100460	TRAFFIC CONTROL AND PROTECTION, STANDARD 701306	L SUM	1	1	
70100500	TRAFFIC CONTROL AND PROTECTION, STANDARD 701326	L SUM	1	1	
70103815	TRAFFIC CONTROL SURVEILLANCE	CAL DAY	80	80	
70106500	TEMPORARY BRIDGE TRAFFIC SIGNALS	EACH	1	1	
70106700	TEMPORARY RUMBLE STRIPS	EACH	12	12	
70300240	TEMPORARY PAVEMENT MARKING - LINE 6"	FOOT	1904	1904	
70300280	TEMPORARY PAVEMENT MARKING - LINE 24"	FOOT	48	48	
70300520	PAVEMENT MARKING TAPE, TYPE III 4"	FOOT	3176	3176	
70400100	TEMPORARY CONCRETE BARRIER	FOOT	1144	1144	
70400200	RELOCATE TEMPORARY CONCRETE BARRIER	FOOT	1144	1144	

①
①

FILE NAME = P:\Projects\674480 - P13 175-19 DB Va Ph 1 and 1163485 - WD AUCAD\CAD00 Drawings\CADD Sheets\087636-Str-500.dgn

① REV. 4-18-2018

USER NAME = default	DESIGNED -	REVISED -	STATE OF ILLINOIS DEPARTMENT OF TRANSPORTATION				SUMMARY OF QUANTITIES				F.A.P. RTE.	SECTION	COUNTY	TOTAL SHEETS	SHEET NO.
PLOT SCALE = 1/8"=1'-0"	DRAWN -	REVISED -									42	1B-R-1	WASHINGTON	23	4
PLOT DATE = 1/17/2018	CHECKED -	REVISED -	SCALE: N/A				SHEET 2 OF 4 SHEETS				STA. N/A TO STA. N/A				
	DATE -	REVISED -	ILLINOIS FED. AID PROJECT CONTRACT NO. 76L36												

CODE NO.	ITEM	UNIT	TOTAL QUANTITY	80% FED 20% STATE	
				BRIDGE	CONSTR. CODE
				0047	
				RURAL	
70600260	IMPACT ATTENUATORS, TEMPORARY (FULLY REDIRECTIVE, NARROW), TEST LEVEL 3	EACH	2		2
70600332	IMPACT ATTENUATORS, RELOCATE (FULLY REDIRECTIVE, NARROW), TEST LEVEL 3	EACH	2		2
* 72501000	TERMINAL MARKER - DIRECT APPLIED	EACH	4		4
* 78000200	THERMOPLASTIC PAVEMENT MARKING - LINE 4"	FOOT	2663		2663
* 78200005	GUARDRAIL REFLECTORS, TYPE A	EACH	10		10
* 78100100	RAISED REFLECTIVE PAVEMENT MARKER	EACH	19		19
* 78200011	BARRIER WALL REFLECTORS, TYPE C	EACH	92		92
78300200	RAISED REFLECTIVE PAVEMENT MARKER REMOVAL	EACH	19		19
X0327979	PAVEMENT MARKING REMOVAL - GRINDING	SQ FT	900		900
X1200030	FILLING INLETS, TEMPORARY	EACH	2		2
X4811800	AGGREGATE SHOULDERS (SPECIAL)	SQ YD	3163		3163
X5870015	BRIDGE DECK CONCRETE SEALER	SQ FT	6679		6679
* X6310214	TRAFFIC BARRIER TERMINAL, TYPE 6 (SPECIAL)	EACH	4		4
X7030005	TEMPORARY PAVEMENT MARKING REMOVAL	SQ FT	1060		1060
X7040125	PINNING TEMPORARY CONCRETE BARRIER	EACH	12		12
X7200201	WIDTH RESTRICTION SIGNING	L SUM	1		1
Z0007114	CONTAINMENT AND DISPOSAL OF NON-LEAD PAINT CLEANING RESIDUES	L SUM	1		1
Z0012754	STRUCTURAL REPAIR OF CONCRETE (DEPTH EQUAL TO OR LESS THAN 5 INCHES)	SQ FT	332		332

* SPECIALTY ITEM

△ REV. 4-18-2018

FILE NAME = P:\Projects\534-208 - PTB 176-19 DB Ver. Ph. 1 and 11\534405 - W0 ACAD\CAD\CAD00 Drawings\CAD00 Sheets\087BL35-hty-500.dgn

USER NAME = default	DESIGNED -	REVISED -
PLOT SCALE = 100.0000' = 1"	DRAWN -	REVISED -
PLOT DATE = 1/17/2018	CHECKED -	REVISED -
	DATE -	REVISED -

STATE OF ILLINOIS
DEPARTMENT OF TRANSPORTATION

SUMMARY OF QUANTITIES

SCALE: N/A SHEET 3 OF 4 SHEETS STA. N/A TO STA. N/A

F.A.P. RTE.	SECTION	COUNTY	TOTAL SHEETS	SHEET NO.
42	1B-R-1	WASHINGTON	23	5
			CONTRACT NO. 76L36	
ILLINOIS FED. AID PROJECT				

80% FED
20% STATE

CONSTR. CODE

CODE NO.	ITEM	UNIT	TOTAL QUANTITY	CONSTR. CODE	
				BRIDGE	RURAL
				0047	
Z0016002	DECK SLAB REPAIR (FULL DEPTH, TYPE II)	SO YD	50	50	
Z0016200	DECK SLAB REPAIR (PARTIAL)	SO YD	1100	1100	
∅ Z0076600	TRAINEES	HOUR	500	500	
Z0033700	LONGITUDINAL JOINT SEALANT	FOOT	1924	1924	
∅ Z0076604	TRAINEES TRAINING PROGRAM GRADUATE	HOUR	500	500	



∅ 0042

FILE NAME = P:\Projects\1624480 - PTB 176-19 DB Ver Ph I and I\1624480 - MO ACD00\000 Drawings\000 Sheets\0076L36-INT-500.dgn

△ REV. 4-18-2018

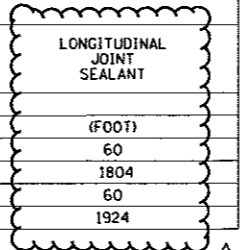
USER NAME = default	DESIGNED -	REVISED -	STATE OF ILLINOIS DEPARTMENT OF TRANSPORTATION	SUMMARY OF QUANTITIES		F.A.P. RTE. = 42	SECTION = 1B-R-1	COUNTY = WASHINGTON	TOTAL SHEETS = 23	SHEET NO. = 6	
PLDT SCALE = 100.0000 1" = 100'	DRAWN -	REVISED -		SCALE: N/A	SHEET 4 OF 4 SHEETS	STA. N/A	TO STA. N/A	ILLINOIS FED. AID PROJECT			
PLDT DATE = 1/17/2018	CHECKED -	REVISED -		CONTRACT NO. 76L36							

STAGING SCHEDULE													
STAGE	TEMPORARY CONCRETE BARRIER	RELOCATE TEMPORARY CONCRETE BARRIER	IMPACT ATTENUATORS, TEMPORARY (FULLY REDIRECTIVE, NARROW) TEST LEVEL 3	IMPACT ATTENUATORS, RELOCATE (FULLY REDIRECTIVE, NARROW) TEST LEVEL 3	PAVEMENT MARKING TAPE, TYPE III 4"	TEMPORARY PAVEMENT MARKING LINE 6"	TEMPORARY PAVEMENT MARKING LINE 24"	PAVEMENT MARKING REMOVAL - GRINDING	TEMPORARY PAVEMENT MARKING REMOVAL	HOT-MIX ASPHALT BASE COURSE WIDENING, 10"	EXCAVATION AND GRADING EXISTING SHOULDER	PAVED SHOULDER REMOVAL	TEMPORARY RUMBLE STRIPS
(FOOT)	(FOOT)	(FOOT)	(EACH)	(EACH)	(FOOT)	(FOOT)	(FOOT)	(SQ FT)	(SQ FT)	(SQ YD)	(UNIT)	(SQ YD)	(EACH)
I	1144	0	2	0	1588	952	24	420	530	100	2	76.5	6
II	0	1144	0	2	1588	952	24	480	530	100	2	76.5	6
TOTAL	1144	1144	2	2	3176	1904	48	900	1060	200	4	153	12

NOTE: THE TEMPORARY PAVEMENT MARKING LINE 6" TO BE PLACED ON THE BOTTOM OF THE TEMPORARY BARRIER

PAVEMENT MARKING SCHEDULE						
LOCATION			THERMOPLASTIC PAVEMENT MARKING - LINE 4"		RAISED REFLECTIVE PAVEMENT MARKERS	
STATION	TO	STATION	WHITE SOLID	YELLOW SKIP	AMBER	REMOVAL
			(FOOT)		(EACH)	
396+77		408+25	2296			
395+17		409+85		367	19	19
TOTAL			2296	367	19	19

RESURFACING SCHEDULE							
LOCATION			POLYMERIZED BITUMINOUS MATERIALS (TACK COAT)	HOT-MIX ASPHALT SURFACE REMOVAL - BUTT JOINT	POLYMERIZED HOT-MIX ASPHALT SURFACE COURSE, MIX "D", N70	POLYMERIZED HOT-MIX ASPHALT SURFACE COURSE, MIX "D", N70	LONGITUDINAL JOINT SEALANT
STATION	TO	STATION	0.5 LB/SF		2"	1 1/2"	(FOOT)
			(POUND)	(SQ YD)	(TON)	(TON)	
397+40.50	TO	398+00.00	95	53.5	22	0	60
398+00.00	TO	407+02.34	1444	0	0	222	1804
407+02.34	TO	407+61.84	95	53.5	22	0	60
TOTAL			1634	107	266	0	1924



FILE NAME = P:\Projects\534408 - PTB 175-9 DB Ver. Ph. I end 11534405 - W0 4\1\000\CA00 D-entries\CA00 Sheets\DRB\BL36-akt-schedule.dgn

△ REV. 4-18-2018

USER NAME = default	DESIGNED -	REVISED -
	DRAWN -	REVISED -
	CHECKED -	REVISED -
	DATE -	REVISED -

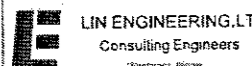
**STATE OF ILLINOIS
DEPARTMENT OF TRANSPORTATION**

SCHEDULE OF QUANTITIES			
SCALE: N/A	SHEET 1	OF 1 SHEETS	STA. N/A TO STA. N/A

F.A.P. RTE.	SECTION	COUNTY	TOTAL SHEETS	SHEET NO.
42	1B-R-1	WASHINGTON	23	8
CONTRACT NO. 76L36				
ILLINOIS FED. AID PROJECT				

GUARDRAIL SCHEDULE								
STRUCTURE	LOCATION	63000001	63100167	63200310	72501000	78200005	X4011800	X6310214
		STEEL PLATE BEAM GUARDRAIL TYPE A, 6 FOOT POSTS	TRAFFIC BARRIER TERMINAL TYPE 1, SPECIAL (TANGENT)	GUARDRAIL REMOVAL	TERMINAL MARKER - DIRECT APPLIED	GUARDRAIL REFLECTORS, TYPE A	AGGREGATE SHOULDERS SPECIAL	TRAFFIC BARRIER TERMINAL TYPE 6 (SPECIAL)
		(FOOT)	(EACH)	(FOOT)	(EACH)	(EACH)	(SQ YD)	(EACH)
S.N. 095-0023	NB	150.0	2	300	2	5	1,618.3	2
	SB	150.0	2	300	2	5	1,543.9	2
	TOTAL	300.0	4	600	4	10	3,163	4

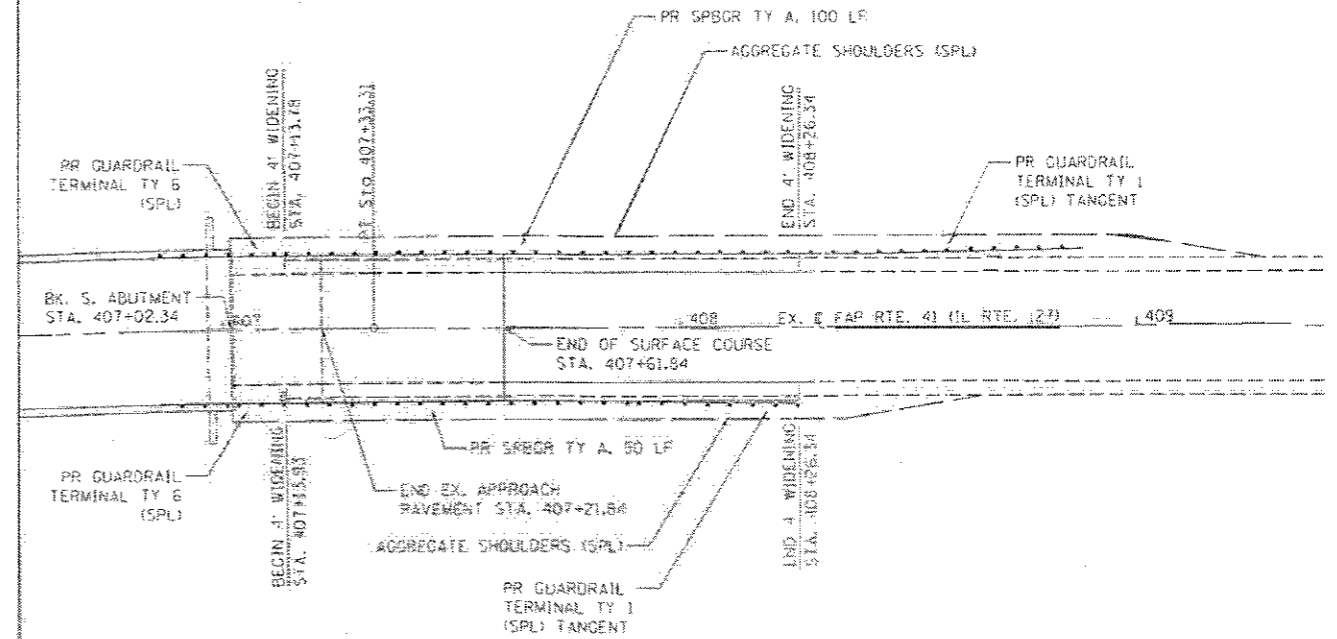
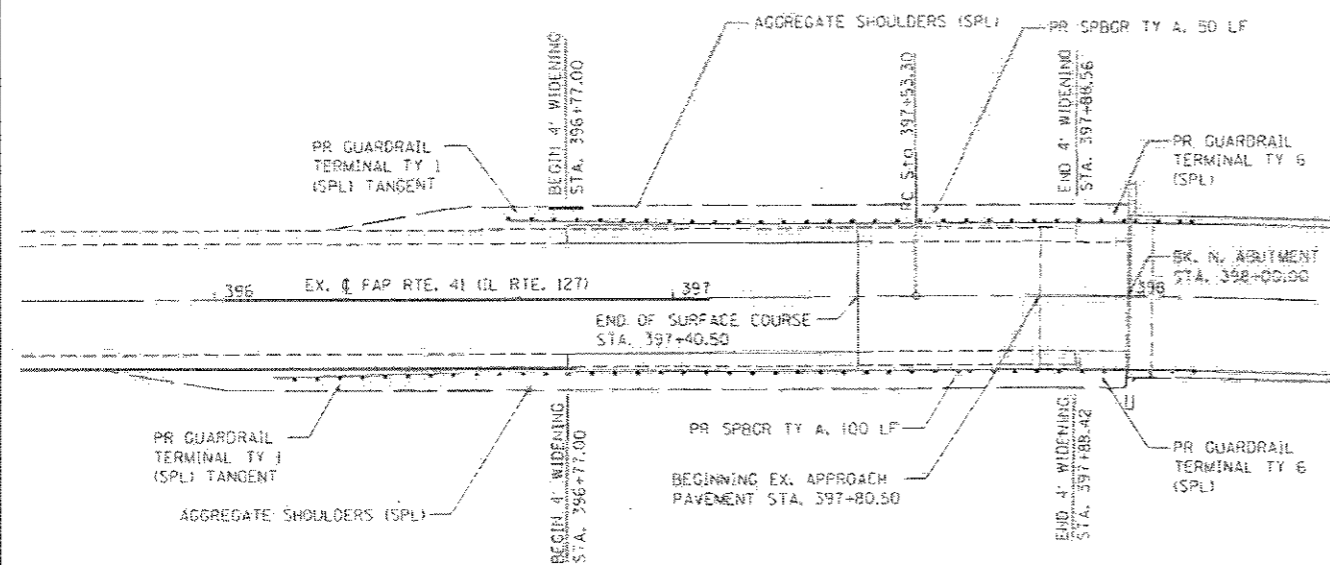
▲ SHEET ADDED 4-18-2018

 LIN ENGINEERING LTD. Consulting Engineers <small>Washington, Illinois</small>	DESIGNED - RC	REVISED A ADDED 04/17/18	STATE OF ILLINOIS DEPARTMENT OF TRANSPORTATION	ILLINOIS ROUTE 127 OVER CROOKED CREEK OVERFLOW SCHEDULE OF QUANTITIES		R.E.P. SITE	SECTION	COUNTY	TOTAL SHEETS	SHEET NO.
	DRAWN - RC	REVISED -		42	18-R-1	WASHINGTON	23	8A		
	CHECKED - ST	REVISED -				CONTRACT NO. 76L36				
	DATE - 4/2018	REVISED -				ILLINOIS FEDERAL AID PROJECT				
PLOT SCALE = 2.0000 PLOT DATE = 4/17/2018	SCALE: SHEET NO. 1 OF 1 SHEETS 1 STA. TO STA.									

NORTH APPROACH

SOUTH APPROACH

EXIST. CURVE DATA
 P.I. STA. = 402+50.30
 $\Delta = 23^\circ 31' 13''$ (RT)
 $D = 2^\circ 24' 00''$
 $R = 2,387.32'$
 $T = 497.00'$
 $L = 980.01'$
 $E = 51.19'$
 $e = 0.0495$ FT/FT
 P.C. STA. = 397+53.30
 P.T. STA. = 407+33.31



SHEET ADDED 4-18-2018

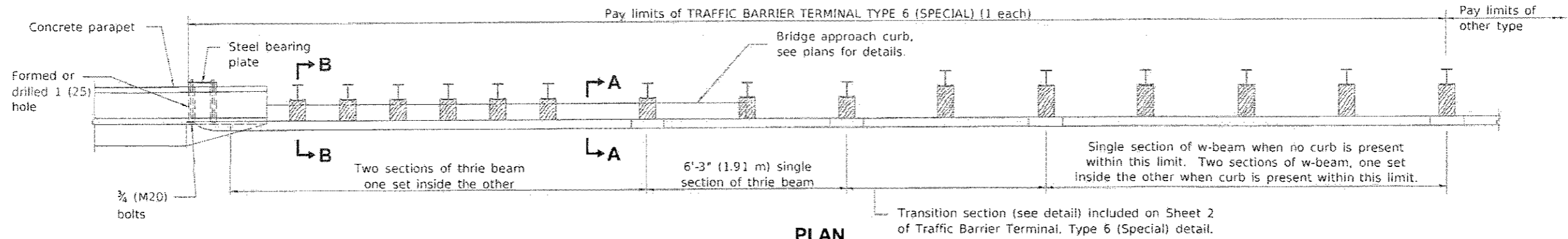
LIN ENGINEERING, LTD. Consulting Engineers Westmont, Illinois	DESIGNED - RC	REVISED - A - ADDED 04/18
	DRAWN - RC	REVISED -
	CHECKED - ST	REVISED -
	DATE - 4/2016	REVISED -
	PLOT DATE - 4/17/2018	REVISED -

STATE OF ILLINOIS
DEPARTMENT OF TRANSPORTATION

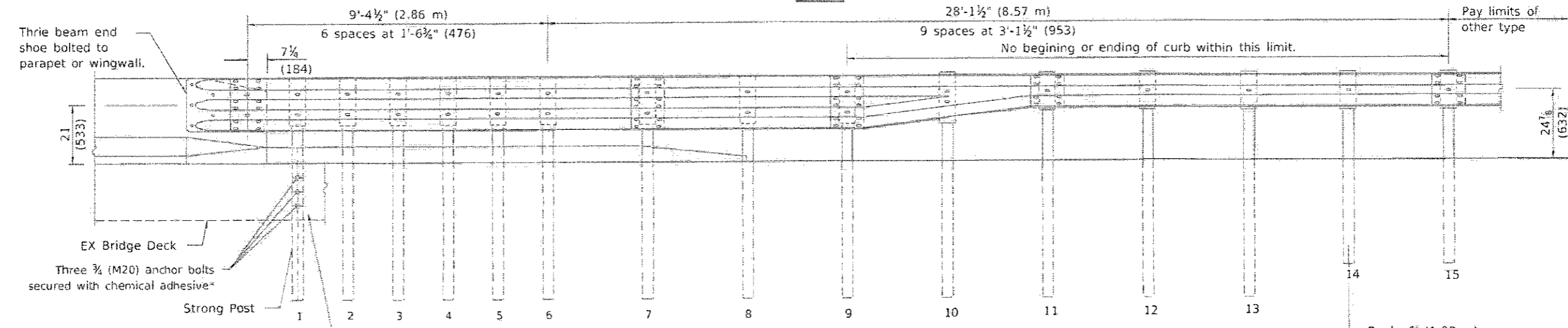
ILLINOIS ROUTE 127 OVER CROOKED CREEK OVERFLOW
PLAN

SCALE: 1"=20' | SHEET NO. 1 OF 1 SHEETS | STA. 396+77.00 TO STA. 408+26.34

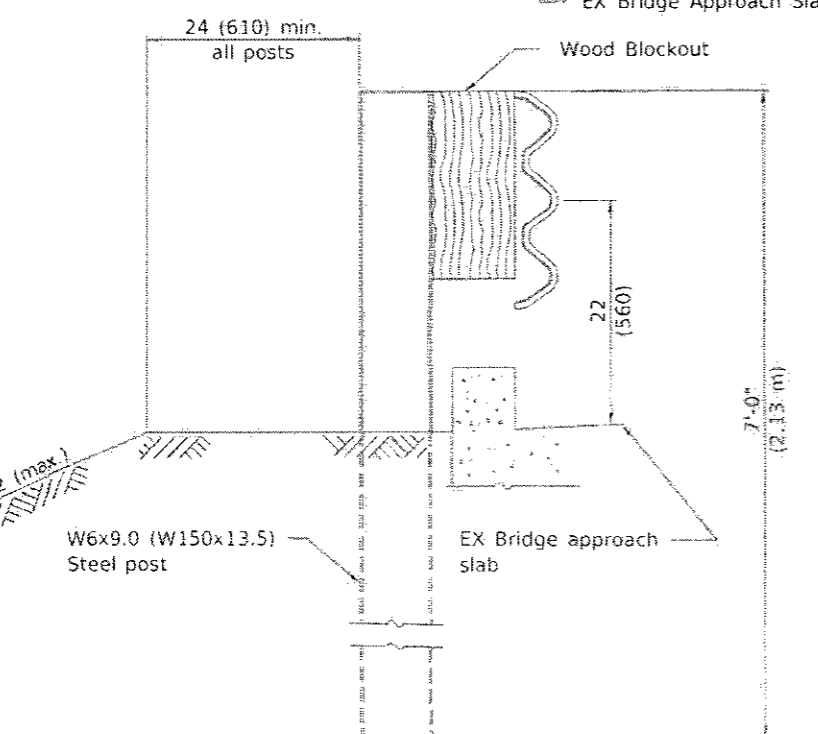
F.A.P. NO. 42	SECTION 1B-R-1	COUNTY WASHINGTON	TOTAL SHEET NO. 23	SHEET NO. 9A
CONTRACT NO. T6L36			ILLINOIS FED. AID PROJECT	



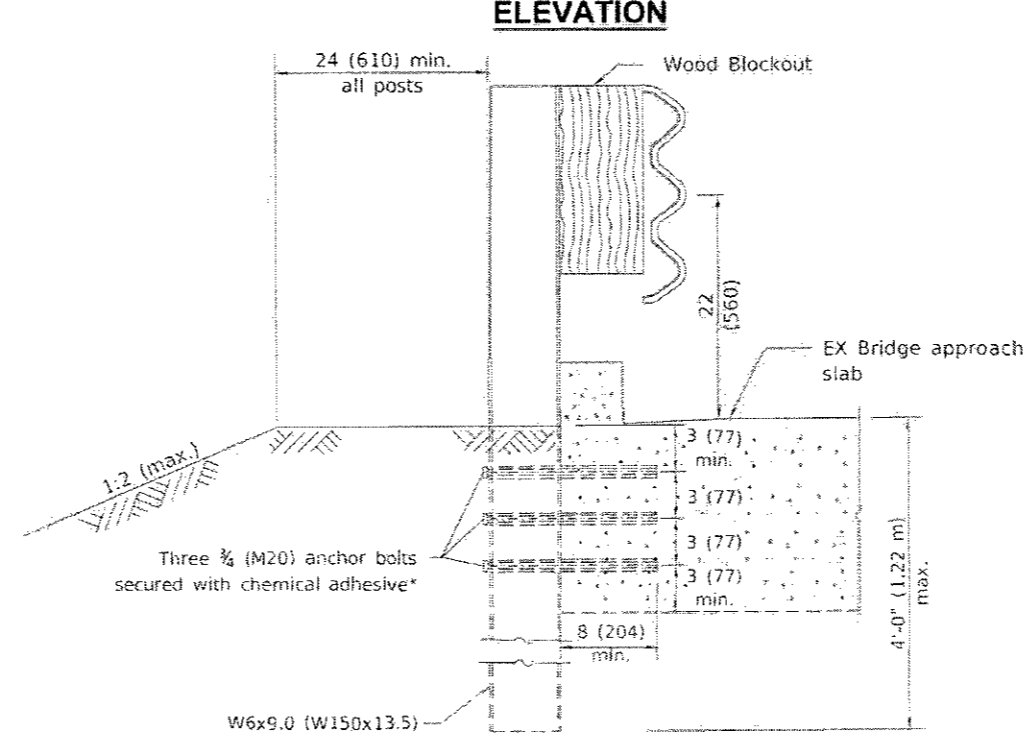
PLAN



ELEVATION



SECTION A-A



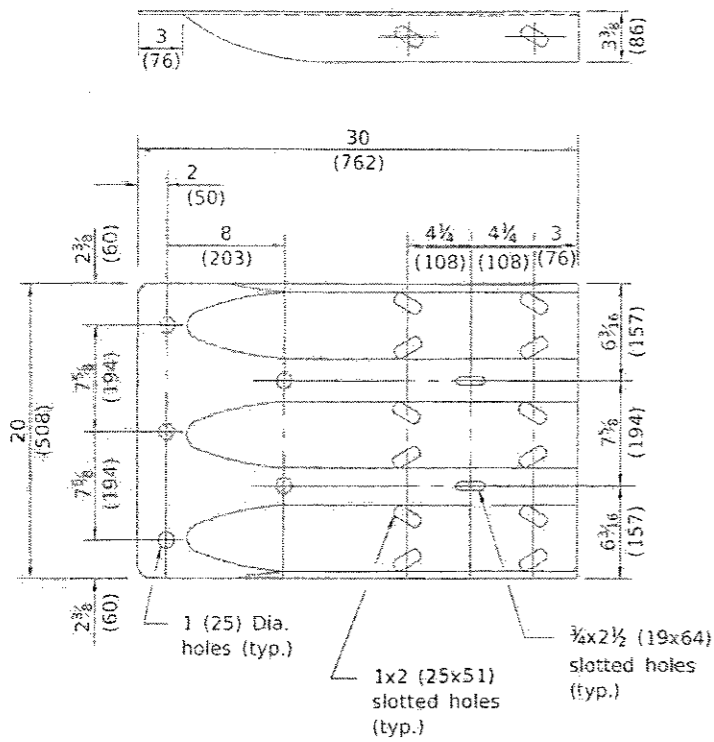
SECTION B-B

GENERAL NOTES

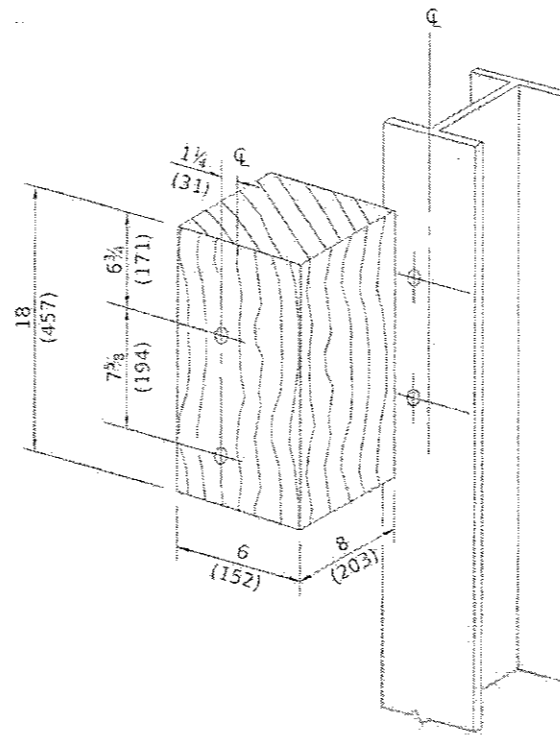
- See Standard 630001 for details of guardrail not shown.
- Thrie beam rail shall be bolted to block-out at all posts.
- All slope ratios are expressed as units of vertical displacement to units of horizontal displacement (V:H).
- All dimensions are in inches (millimeters) unless otherwise shown.
- With standard washers. After tightening, cut the anchor bolts flush with the nuts and damage the nuts to prevent them from loosening.

▲ SHEET ADDED 4-18-2018

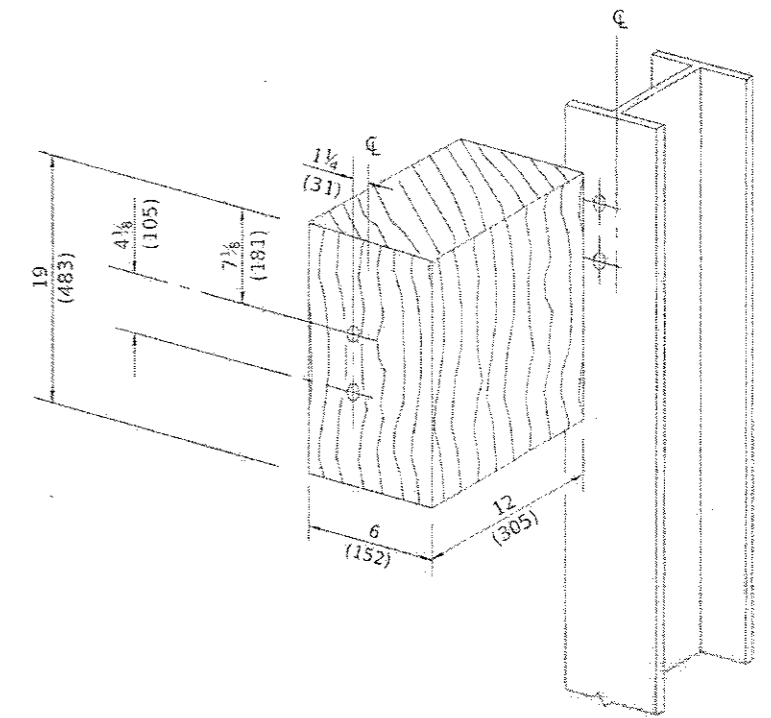
<p>LIN ENGINEERING LTD. Consulting Engineers Washington, Illinois</p>	DESIGNED - RC	REVISED - Added 4/17/18	<p>STATE OF ILLINOIS DEPARTMENT OF TRANSPORTATION</p>	<p>ILLINOIS ROUTE 127 OVER CROOKED CREEK OVERFLOW TRAFFIC BARRIER TERMINAL TYPE 6 (SPECIAL)</p>	P.A.P. RITE - 42	SECTION - 13-R-1	COUNTY - WASHINGTON	TOTAL SHEETS - 23	SHEET NO. - 9B
	DRAWN - RC	REVISED -			CONTRACT NO. - T6L36				
	CHECKED - JT	REVISED -			SCALE: N.T.S.	SHEET NO. 1 OF 2 SHEETS	STA. TO STA.		
	DATE - 4/2018	REVISED -			ILLINOIS PROJECT				



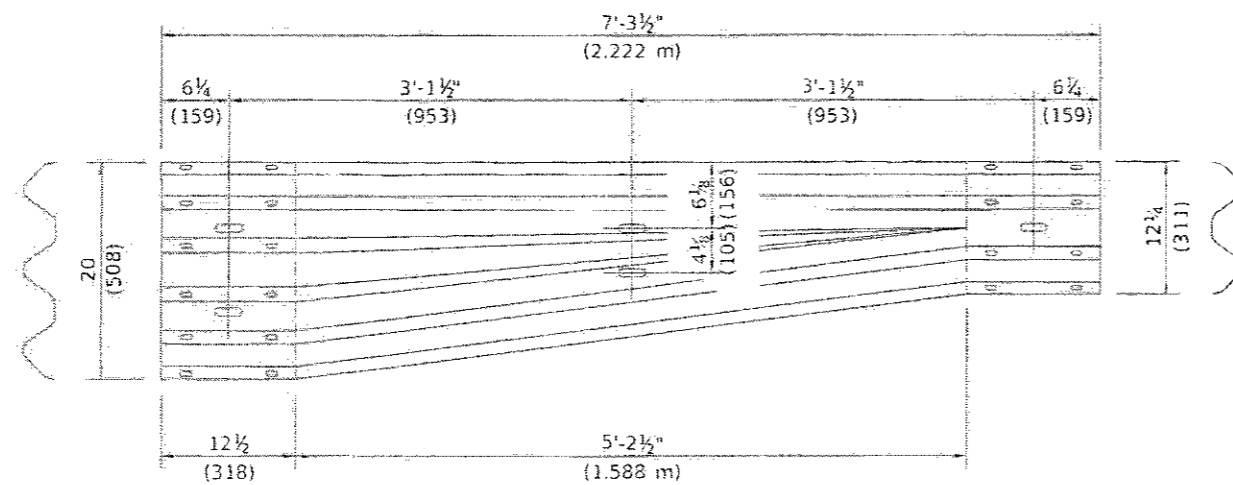
THRIE BEAM END SHOE DETAIL



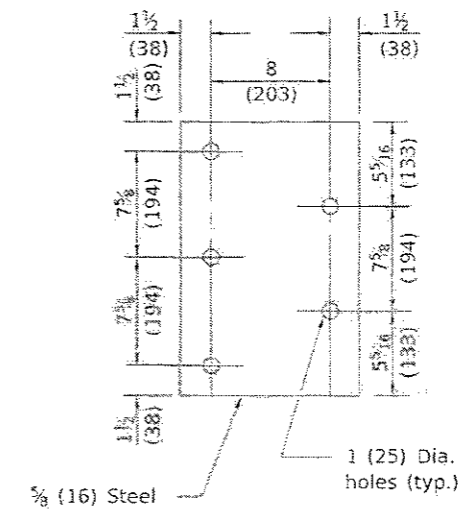
POSTS 1-9 WOOD BLOCKOUT DETAIL



POST 10 WOOD BLOCKOUT DETAIL
(See Standard 630001 for post 11-15 blockouts.)



TRANSITION SECTION
(10 gauge (3.4) rail element)



PARAPET STEEL BEARING PLATE DETAIL
(5 each individual 5x5x5/8 (125x125x16) steel plates with centered 1 (25) holes may be substituted for the plate shown.)

△ SHEET ADDED 4-18-2018