

STATE OF ILLINOIS
DEPARTMENT OF TRANSPORTATION

F.A.I. RTE.	SECTION	COUNTY	TOTAL SHEETS	SHEET NO.
80	(06-2, 06-3) SFY, CBL	BUREAU	6	1
		ILLINOIS	CONTRACT NO. 66H70	

INDEX OF SHEETS

- 1 COVER SHEET
- 2 GENERAL NOTES
- 3 SUMMARY OF QUANTITIES
- 4 TYPICAL SECTION & SCHEDULE
- 5-6 DETAILS

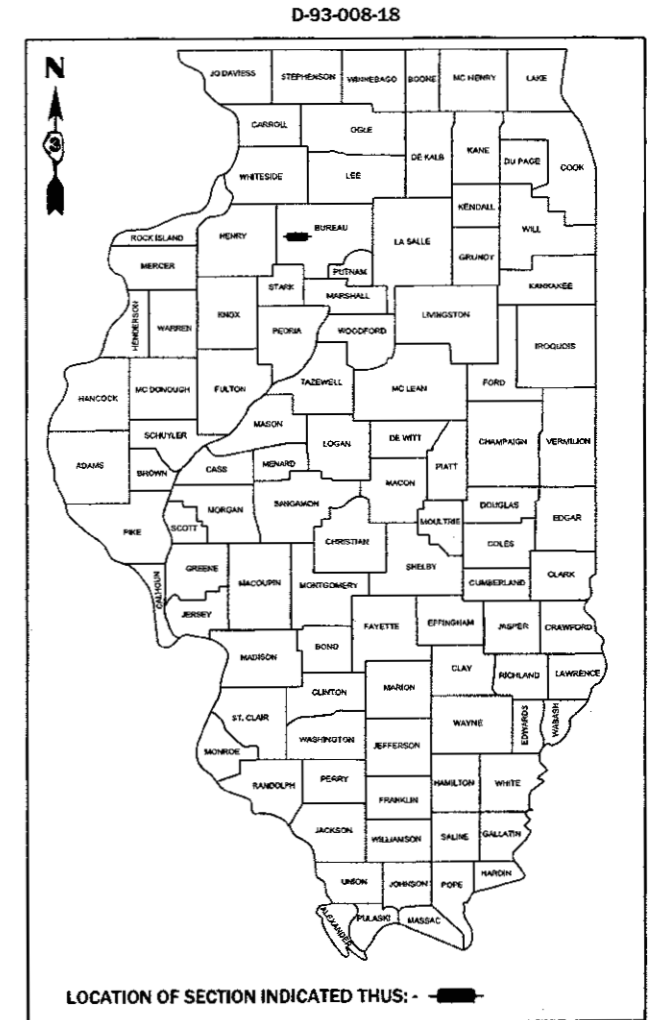
LIST OF ILLINOIS DOT HIGHWAY STANDARDS

000001-06	STANDARD SYMBOLS, ABBREVIATIONS AND PATTERNS
001006	DECIMAL OF AN INCH AND OF A FOOT
701101-05	OFF-ROAD OPERATIONS, MULTILANE, 15' (4.5 m) TO 24' (600 mm) FROM PAVEMENT EDGE
701106-02	OFF-ROAD OPERATIONS, MULTILANE, MORE THAN 15' (4.5 m) AWAY
701400-09	APPROACH TO LANE CLOSURE, FREEWAY/EXPRESSWAY
701401-11	LANE CLOSURE, FREEWAY/EXPRESSWAY
701456-05	PARTIAL EXIT RAMP CLOSURE FREEWAY/EXPRESSWAY
701901-07	TRAFFIC CONTROL DEVICES

PROPOSED
HIGHWAY PLANS

FAI ROUTE 80 (I-80)
SECTION (06-2, 06-3) SFY, CBL
PROJECT: HSIP-RASA (480)
HIGH TENSION CABLE MEDIAN BARRIER
BUREAU COUNTY

C-93-007-18



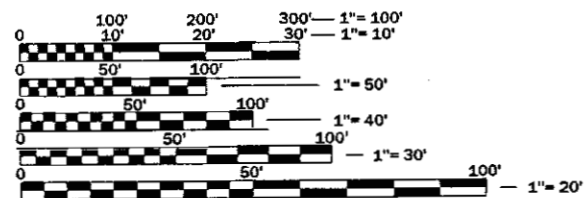
RURAL INTERSTATE
2015 ADT=18,700
P.V.=53.1% S.U.=4.1% M.U.=42.8%

STATE OF ILLINOIS
DEPARTMENT OF TRANSPORTATION

SUBMITTED 2-1-2018
R. S. Manhal
REGIONAL ENGINEER

MAR 23 2018
Paul P. [Signature]
ENGINEER OF DESIGN AND ENVIRONMENT
MAR 23 2018
DIRECTOR OF HIGHWAYS PROJECT IMPLEMENTATION

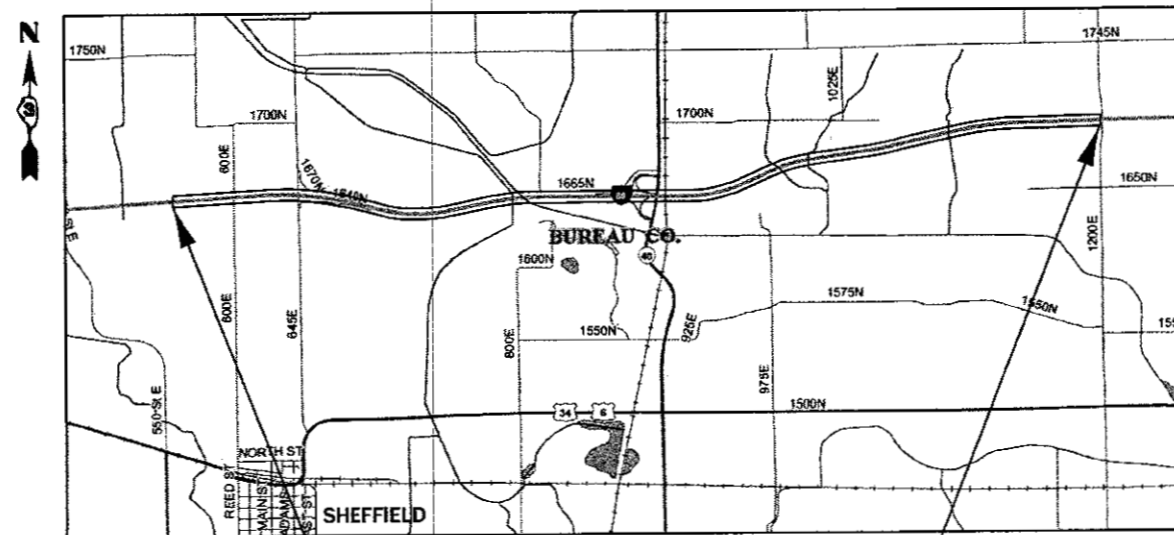
PRINTED BY THE AUTHORITY
OF THE STATE OF ILLINOIS



FULL SIZE PLANS HAVE BEEN PREPARED USING STANDARD ENGINEERING SCALES. REDUCED SIZED PLANS WILL NOT CONFORM TO STANDARD SCALES. IN MAKING MEASUREMENTS ON REDUCED PLANS, THE ABOVE SCALES MAY BE USED.

J.U.L.I.E.
JOINT UTILITY LOCATION INFORMATION FOR EXCAVATION
1-800-892-0123
OR 811

PROJECT ENGINEER: JOE KANNEL, P.E.
UNIT CHIEF: MARC BUDZYNSKI, P.E.
DISTRICT 3 NO. (815) 434-6131
CONTRACT NO. 66H70



PROJECT BEGINS
0.42 MI WEST OF 600 E ST
JUST EAST OF CROSSOVER
M.M. 41.53

PROJECT ENDS
1200 E ST OVERPASS
M.M. 48.03

GROSS LENGTH = 34,320 FT. = 6.50 MILES
NET LENGTH = 32,155 FT. = 6.09 MILES

GENERAL NOTES

FOR STABILIZATION, ALL TYPE III BARRICADES WILL REQUIRE A MINIMUM OF FOUR SAND BAGS PER BARRICADE.

SEEDING WILL NOT BE PERMITTED AT ANY TIME WHEN THE GROUND IS FROZEN, WET, OR IN AN UNTILLABLE CONDITION. LOCATIONS TO BE SEEDED WILL BE DETERMINED BY THE ENGINEER.

ALL EXCAVATED MATERIAL, WHICH INCLUDES DIGGING OR GRADING OF ANY SOIL OR FILL MATERIAL, WITH THE EXCEPTION OF AGGREGATE FILLS, MUST BE INCORPORATED WITHIN THE IDOT RIGHT OF WAY DUE TO ENVIRONMENTAL DOCUMENTATION REQUIREMENTS.

ABANDONED UNDERGROUND UTILITIES THAT CONFLICT WITH CONSTRUCTION SHALL BE DISPOSED OF OUTSIDE THE LIMITS OF THE RIGHT OF WAY ACCORDING TO ARTICLE 202.03 OF THE STANDARD SPECIFICATIONS AND AS DIRECTED BY THE ENGINEER. THIS WORK WILL NOT BE PAID FOR SEPARATELY, BUT WILL BE INCLUDED IN THE COST OF WEED CONTROL MOWING STRIP (SPECIAL).

ANY REFERENCE TO A STANDARD IN THESE PLANS SHALL BE INTERPRETED TO MEAN THE EDITION AS INDICATED BY THE SUBNUMBER SHOWN IN THE LIST OF STANDARDS OR THE COPY INCLUDED IN THESE PLANS.

ALL DAMAGE TO DEPARTMENT OWNED UNDERGROUND FACILITIES, CAUSED BY THE CONTRACTOR SHALL BE REPAIRED TO THE SATISFACTION OF THE DEPARTMENT AT THE CONTRACTOR'S EXPENSE. THIS SHALL INCLUDE ALL TEMPORARY REPAIRS REQUIRED TO KEEP THE FACILITY OPERATIONAL WHILE MATERIAL IS BEING OBTAINED TO MAKE PERMANENT REPAIRS. SPLICING OF ELECTRIC CABLE WILL NOT BE ALLOWED. ELECTRIC CABLE SHALL BE REPLACED FROM POLE TO POLE OR CONTROLLER.

THE CONTRACTOR SHALL CONTACT JULIE AT LEAST 48 HOURS PRIOR TO EXCAVATION TO DETERMINE WHICH UTILITIES ARE IN THE AREA.

COMMITMENTS:

STATE OF ILLINOIS
DEPARTMENT OF TRANSPORTATION
DISTRICT THREE
AS BUILT INFORMATION

SUPERVISING CONSTRUCTION FIELD ENGINEER

RESIDENT ENGINEER / TECHNICIAN

START & END DATES
OF CONSTRUCTION: _____

INSPECTORS: _____

STATE OF ILLINOIS
DEPARTMENT OF TRANSPORTATION
DISTRICT THREE

PREPARED BY: David Brunick (CPE)
DISTRICT STUDIES & PLANS ENGINEER

DATE: 02/02/18

EXAMINED BY: K. V. [Signature]
DISTRICT CONSTRUCTION ENGINEER

Michael S. [Signature]
DISTRICT MATERIALS ENGINEER

Jim [Signature]
DISTRICT OPERATIONS ENGINEER

STATE OF ILLINOIS
DEPARTMENT OF TRANSPORTATION

GENERAL NOTES

SCALE: SHEET OF SHEETS STA. TO STA.

F.A.I. RTE.	SECTION	COUNTY	TOTAL SHEETS	SHEET NO.
80	(06-2, 06-3) SFY, CBL	BUREAU	6	2
CONTRACT NO. 66H70				
ILLINOIS FED. AID PROJECT				

FILE NAME	USER NAME	DESIGNED	REVISED
per:\VL034EBID\INTEG.ILLINOIS.gov\PWIDOT\Documents\IDOT\Office\District 3\Projects\0368H70\CADD\Drawings\0368H70-sh-01.dwg	budzynski	DRAWN	REVISED
		CHECKED	REVISED
		DATE	REVISED

CONSTR. CODE
90% FED
10% STATE
ROADWAY
0021
RURAL

CODE NO.	ITEM	UNIT	TOTAL QUANTITY	CONSTR. CODE	
				0021	RURAL
64401100	HIGH TENSION CABLE MEDIAN BARRIER	FOOT	32155	32155	
64401300	HIGH TENSION CABLE MEDIAN BARRIER TERMINALS	EACH	10	10	
67100100	MOBILIZATION	LSUM	1.0	1.0	
70100800	TRAFFIC CONTROL AND PROTECTION, STANDARD 701401	LSUM	1.0	1.0	
70100825	TRAFFIC CONTROL AND PROTECTION, STANDARD 701456	LSUM	1.0	1.0	
* 72501100	TERMINAL MARKER - POST MOUNTED	EACH	10	10	
X0325231	CABLE GUARD MARKER	EACH	806	806	
X0325667	WEED CONTROL MOWING STRIP (SPECIAL)	SQ YD	21437	21437	
X7015005	CHANGEABLE MESSAGE SIGN	CAL DA	180	180	

* SPECIALTY ITEM

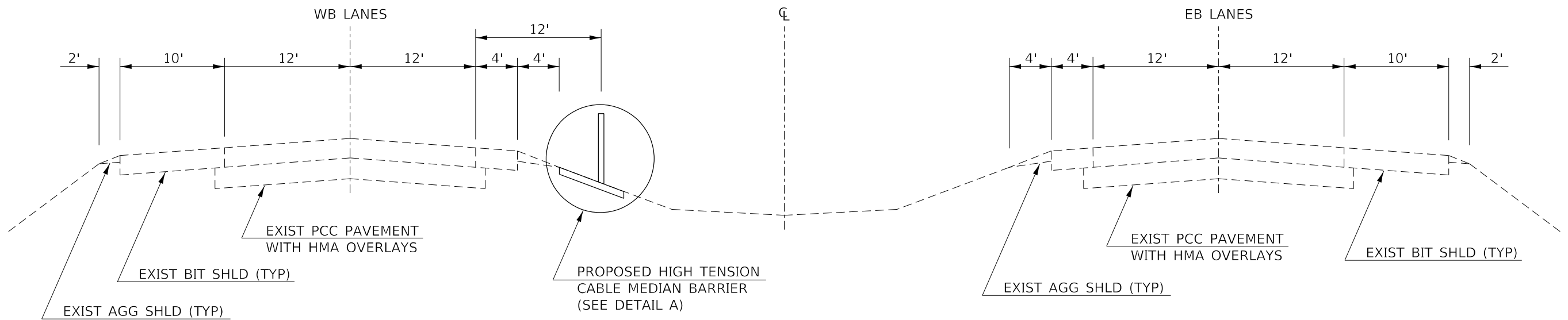
FILE NAME =	USER NAME = bukczynskm	DESIGNED -	REVISED -
p:\11084EB\NTEG\Illinois.gov\FW\DOT\Documents\31\Office\District 3\Projects\0366H70\CADD\data\0366H70-sh...	ovb\mwn	CHECKED -	REVISED -
Default	PLOT SCALE = 100.0000' / 1 in.	DATE -	REVISED -
	PLOT DATE = 1/29/2018		

STATE OF ILLINOIS
DEPARTMENT OF TRANSPORTATION

SUMMARY OF QUANTITIES

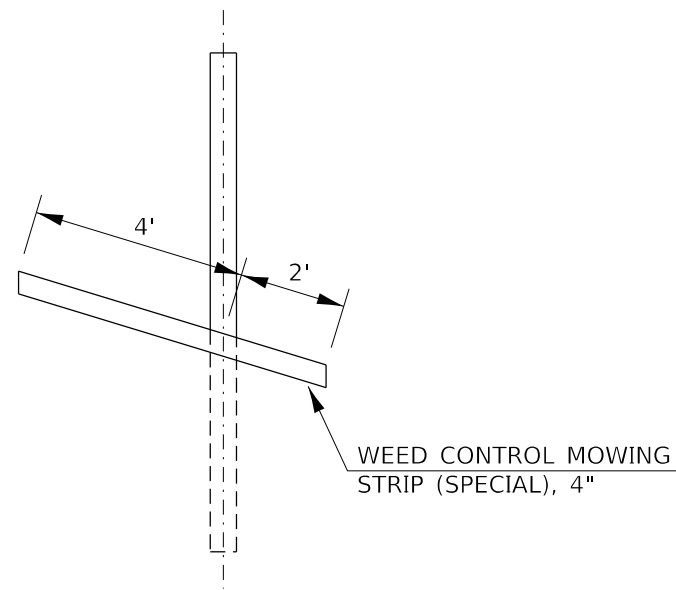
SCALE: SHEET OF SHEETS STA. TO STA.

F.A.I. RTE.	SECTION	COUNTY	TOTAL SHEETS	SHEET NO.
80	(06-2, 06-3) SFY, CBL	BUREAU	6	3
ILLINOIS FED. AID PROJECT			CONTRACT NO. 66H70	



PROPOSED TYPICAL SECTION

M.M. 41.53 TO M.M. 48.03



DETAIL A

HIGH TENSION CABLE MEDIAN BARRIER SCHEDULE

LOCATION		LENGTH	HT CBL MEDIAN BARRIER	CABLE GUARD MARKER	HT CBL MED BAR TERM	TERMINAL MARKER - POST MOUNTED	WEED CONTROL MOWING STRIP (SPECIAL)
M.M.	TO M.M.	MILES	FOOT	EACH	EACH	EACH	SQ YD
41.53	TO 43.58	2.05	10824	271	2	2	7216
CROSSOVER OMISSION							
43.71	TO 43.89	0.18	950	24	2	2	634
BRIDGE OMISSION							
44.04	TO 44.21	0.17	898	23	2	2	598
CROSSOVER OMISSION							
44.32	TO 45.25	0.93	4910	123	2	2	3274
CROSSOVER OMISSION							
45.27	TO 48.03	2.76	14573	365	2	2	9715
TOTAL							
		6.09	32155	806	10	10	21437



PLACE THE EXCAVATED MATERIAL FROM THE MOW STRIP IN APPROXIMATELY A 100' x 200' AREA IN THE INFIELD. THE AREA SHALL BE SEEDED AND MULCHED AS DESCRIBED IN THE PLANS AND SPECIAL PROVISIONS.

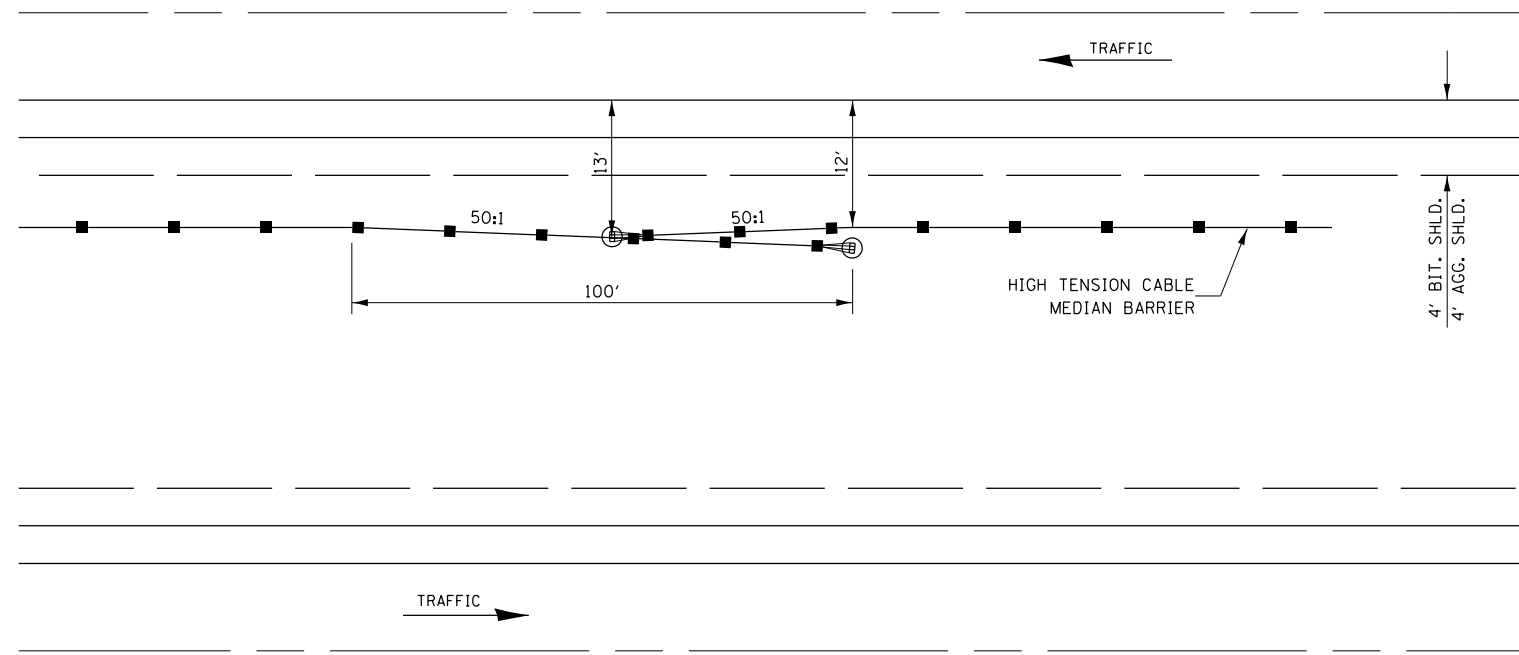
FILE NAME =	USER NAME = budzynsklm	DESIGNED -	REVISED -
pw:\il084EBID\INTEG\Illnotes.gov\PWIDOT\Documents\IDOT\Office\District 3\Projects\D366H70\CADDData\D366H70-shr-cov		DRAWN -	REVISED -
Default	PLOT SCALE = 100.0000' / in.	CHECKED -	REVISED -
	PLOT DATE = 1/26/2018	DATE -	REVISED -

**STATE OF ILLINOIS
DEPARTMENT OF TRANSPORTATION**

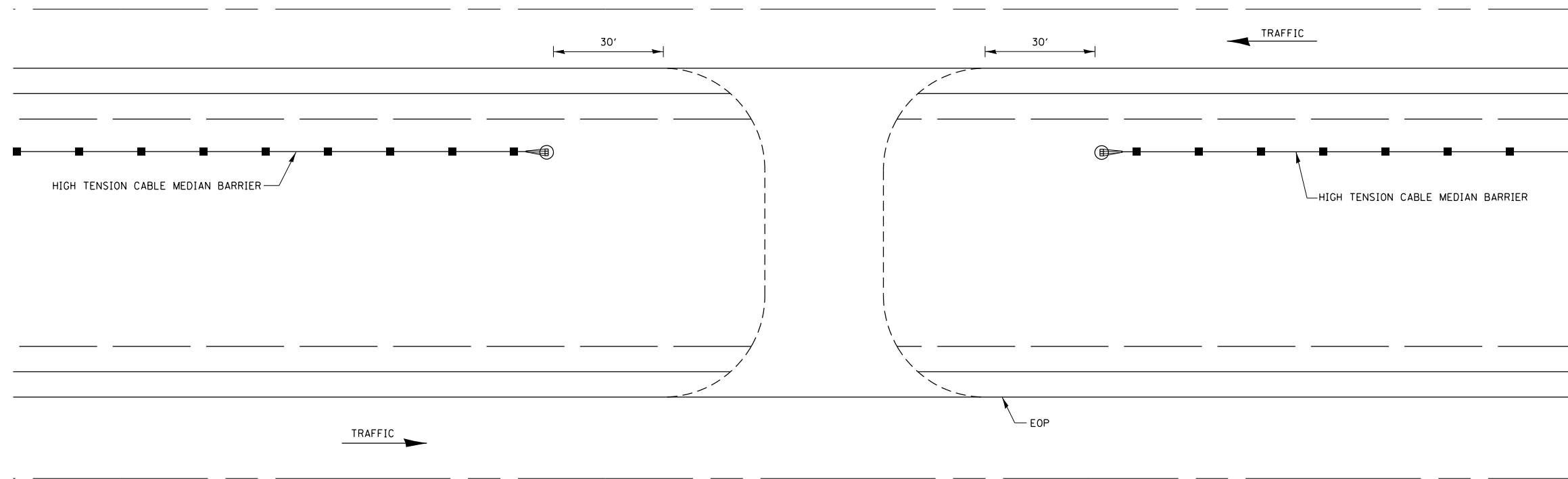
MOW STRIP EXCAVATION PLACEMENT DETAIL

SCALE: SHEET OF SHEETS STA. TO STA.

F.A.I. RTE.	SECTION	COUNTY	TOTAL SHEETS	SHEET NO.
80	(06-2, 06-3) SFY, CBL	BUREAU	6	5
CONTRACT NO. 66H70				
		ILLINOIS	FED. AID PROJECT	



HIGH TENSION CABLE BARRIER OVERLAP DETAIL



MAINTENANCE CROSSOVER DETAIL

FILE NAME =	USER NAME = budzynsklm	DESIGNED -	REVISED -	STATE OF ILLINOIS DEPARTMENT OF TRANSPORTATION	DETAILS			F.A.I. RTE.	SECTION	COUNTY	TOTAL SHEETS	SHEET NO.
pw:\il084EBID\INTEG\Illnotes.gov\PWIDOT\Documents\DOT\Office\District 3\Projects\D366H70\CADDData\D366H70-sht-cov	DRAWN -	CHECKED -	REVISED -					80	(06-2, 06-3) SFY, CBL	BUREAU	6	6
Default	PLOT SCALE = 100.0000' / in.	DATE -	REVISED -		SCALE: SHEET OF SHEETS STA. TO STA.			CONTRACT NO. 66H70				
	PLOT DATE = 1/26/2018							ILLINOIS	FED. AID PROJECT			