

04-27-2018 LETTING ITEM 138

INDEX OF SHEETS

Sheet No.	Description
1	COVER SHEET
2	TYPICAL CROSS SECTION AND DETAILS
3	DETAILS & SCHEDULES

STANDARDS

701301-04	LANE CLOSURE 2L.2W SHORT TERM OPERATIONS
701306	LANE CLOSURE 2L.2W SLOW MOVING OP. DAY ONLY. ≥45MPH
701901-07	TRAFFIC CONTROL DEVICES
000001-06	STANDARD SYMBOLS, ABBREVIATIONS AND PATTERNS

SUMMARY OF QUANTITIES

CODE NO.	Description	Quantity	Unit
* 40600290	BITUMINOUS MATERIALS (Tack Coat)	12834	POUND
* 40600627	LEVEL BINDER MM IL 9.5FG N50	1129	TON
* 40600982	HMA SURFACE REMOVAL - BUTT JOINT	270	SO YD
40600990	TEMPORARY RAMP	37	SO YD
* 40603310	HMA SURFACE COURSE MIXTURE "C" N50	1693	TON
40800050	INCIDENTAL HOT MIX SURFACING	15	TON
* 48101200	AGGREGATE SHOULDERS, TYPE B	1181	TON
* 67100100	MOBILIZATION	1	L SUM
* 70100460	TRAFFIC CONTROL AND PROTECTION, STANDARD 701306	1	L SUM
* 70300100	SHORT-TERM PAVEMENT MARKING	2334	FOOT
* 20034105	MATERIAL TRANSFER DEVICE	2822	TON

\* Special Provisions  
\* Specialty Item

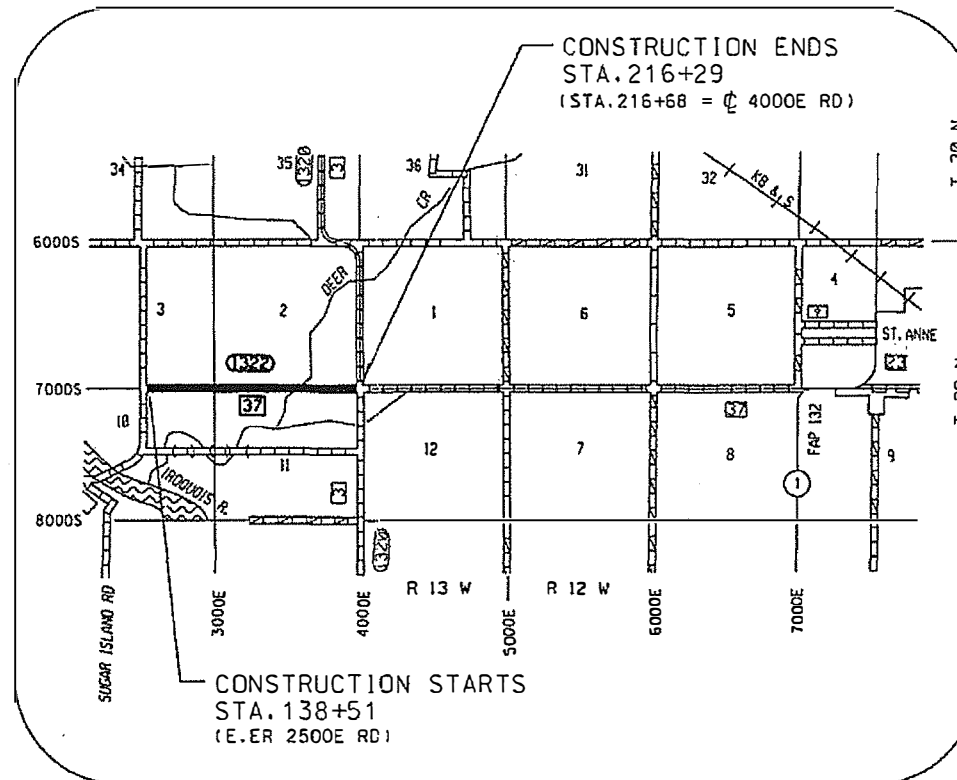
Construction Code 0005

CONTRACT NO. 87676

J.U.L.I.E. 1-800-892-0123

AKD

STATE OF ILLINOIS  
DEPARTMENT OF TRANSPORTATION  
COUNTY OF KANKAKEE  
DEPARTMENT OF HIGHWAYS  
PLANS FOR PROPOSED  
FEDERAL AID SECONDARY PROJECT  
SECTION 13-00115-05-RS  
F.A.S. 1322 ( CH.37 )  
PROJECT V09L(714) C-93-049-17



LOCATION MAP (N.T.S)

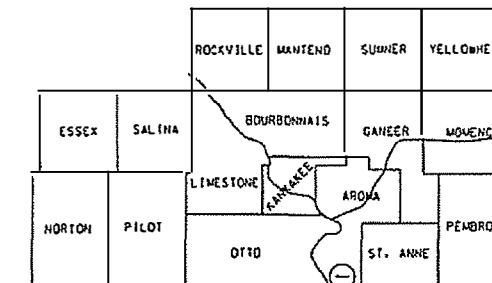
NET LENGTH = 7778 LIN FT = 1.47 MILES

F.A.S. ROUTE NO.	SEC.	COUNTY	NO. SHEETS	SHEET NO.
1322	#	Kankakee	3	1

ILLINOIS PROJECT V09L(714) CONTRACT 87676

\* 13-00115-05-RS

KANKAKEE COUNTY



PROJECT LOCATION

N



THE ACCEPTANCE OF THIS PROJECT IS BASED ON THE MINIMUM DESIGN CRITERIA FOR LOCAL AGENCY FUNCTIONAL OVERLAY POLICY (LAFO) PROJECTS

CLASS III ROAD  
2017 CURRENT A.D.T. = 663  
2027 DESIGN A.D.T. = 733  
DESIGN SPEED = 55 M.P.H.

STATE OF ILLINOIS  
DEPARTMENT OF TRANSPORTATION  
DIVISION OF HIGHWAYS

Submitted 01/17 2018

Mark Rogers, P.E.  
County Engineer

Passed 2/2 2018

Don Ernot  
Local Roads & Streets Engineer

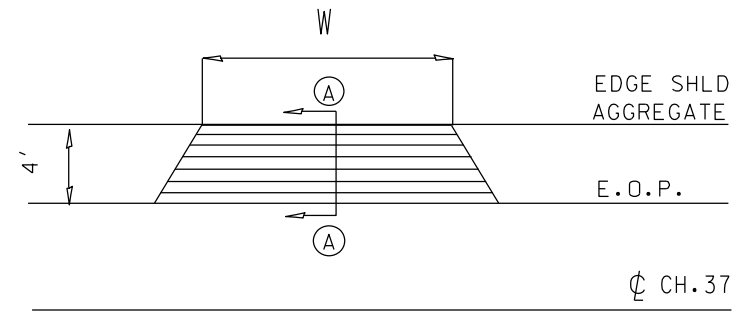
Released for big on limited review 2/2 2018

Kevin Marchek  
Region 2 Engineer

# TYPICAL ENTRANCE DETAIL

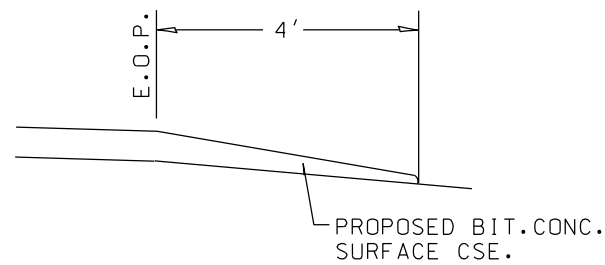
- W :WIDTH OF APPROACH PADS IS ESTIMATED AT 20' PER ENTRANCE . THE ACTUAL CONSTRUCTED WIDTH MAY VARY AS DIRECTED BY THE ENGINEER TO FIT THE EXISTING ENTRANCES .  
FIELD ENTRANCES SHALL NOT RECEIVE BIT.CONCRETE SURFACING

- CHANGING SLOPE OF SCREED TO MATCH DRIVE WILL NOT BE ALLOWED



ESTIMATED QUANTITIES- 2 ENTRANCES		
ITEM	UNIT	QUANTITY
BITUMINOUS MATERIALS ( TACK COAT )	POUND	3
BIT. CONC. SURFACE CSE. SUPERPAVE MIX D. N50	TON	5

SECTION A-A

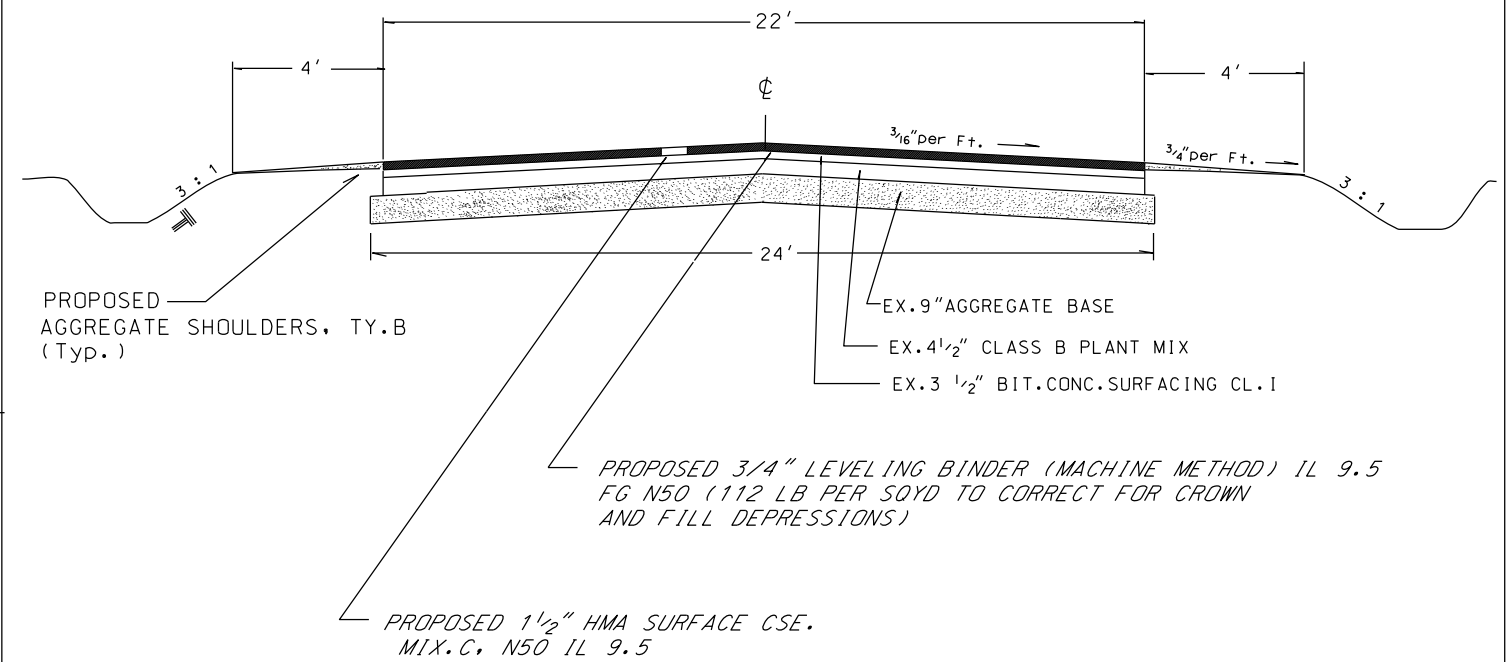


SECTION	COUNTY	TOTAL SHEETS	SHEET NO.
13-00115-05-RS	KANKAKEE	3	2

ILLINOIS PROJECT V09L(714) CONTRACT 87676

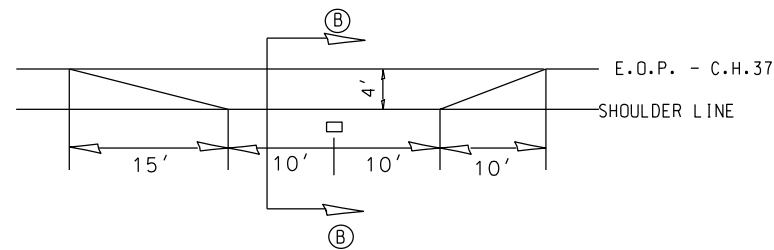
# TYPICAL CROSS SECTION

STA.138+51 TO STA.216+29

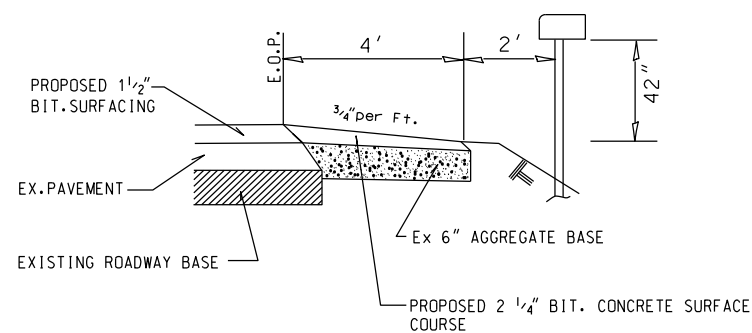


MATERIAL TRANSFER DEVICE REQUIRED ON LEVEL BINDER AND SURFACE LIFTS

# TYPICAL MAILBOX TURNOUT DETAIL



SECTION B-B



ESTIMATED QUANTITIES - 1 MAILBOX TURNOUT 169+65 LT		
ITEM	UNIT	QUANTITY
BIT. MATERIALS ( TACK COAT )	POUND	1
BIT. CONC. SURFACE CSE. SUPERPAVE MIX D. N50	TON	3

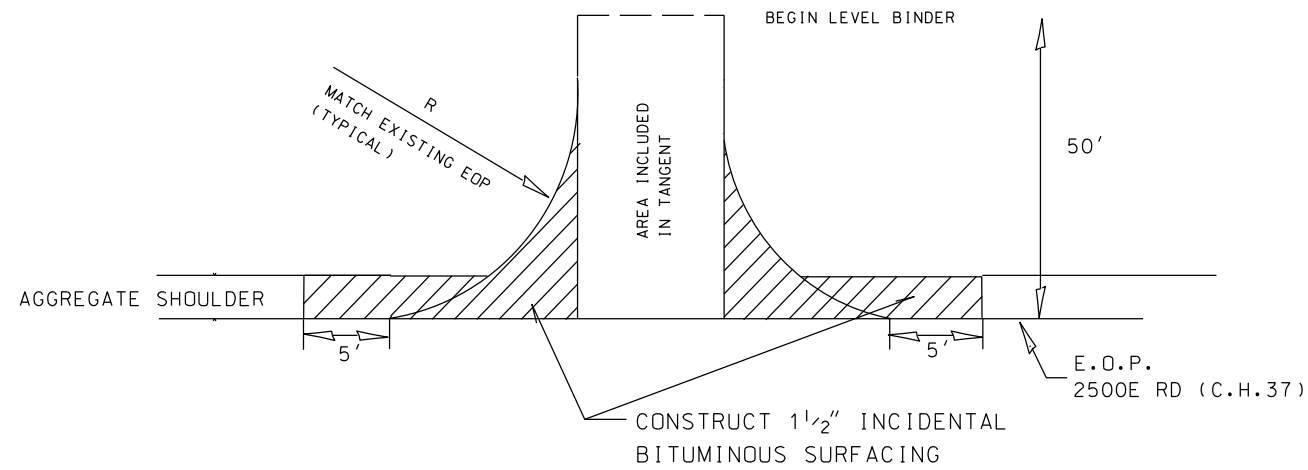
# ESTIMATED QUANTITIES ON TANGENTS

ITEM	UNIT	QUANTITY
BITUMINOUS MATERIALS ( PRIME COAT )	POUND (TOTAL)	12830
Existing surface (0.05 PER SQFT)	POUND	8552
Fog proposed level binder (0.025 PER SQFT)	POUND	4278
LEVEL BINDER MM IL 9.5 N50	TON	1129
HMA SC "C" N50	TON	1685
SHORT-TERM PAVEMENT MARKING	FOOT (TOTAL)	2334
( PRIME )	FOOT	778
( LEVEL BINDER )	FOOT	778
( SURFACE )	FOOT	778
AGGREGATE SHOULDERS TY.B	TON	1181

SECTION	COUNTY	TOTAL SHEETS	SHEET NO.
13-00115-05-RS	KANKAKEE	3	3

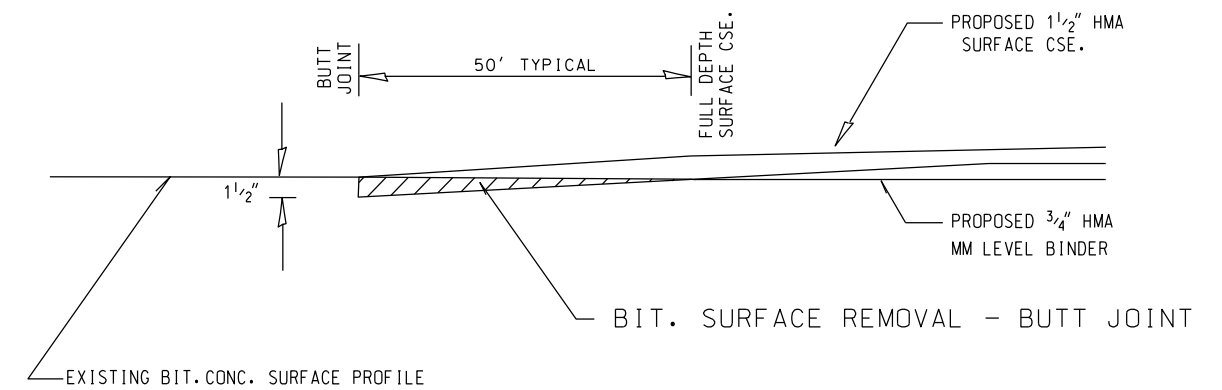
ILLINOIS PROJECT V09L(714) CONTRACT 87676

## INTERSECTION DETAIL



STATION	SIDE	WIDTH	RADIUS	INCIDENTAL BIT. SURFACING (TON)	BIT. MATRLS. ( TACK COAT ) (POUND)	LOCATION
138+51	LT	—	30	5	1	2500E
138+51	RT	—	45	10	1	2500E
TOTALS				15	2	

## TYPICAL BUTT JOINT DETAIL



### Pavement Design Data

Design Period = 20 Years

ADT = 663 (2017) 733 (2027)

P.V. = 88% = 645 S.U. = 7% = 51 M.U. = 5% = 37

TF = 0.20 IBV = 3 SN = 3.2

#### Pavement Structure Number

Ex. 9" Agg. Base (crushed)	9	x 0.08 =	0.72
Ex. 4 1/2" Class B Plant Mix	4.5	x 0.17 =	0.77
Ex. 2" Bit. CL.I Surfacing	2	x 0.23 =	0.46
1ST DLAY. 1 1/2" HMA Surface CL.I	1.5	x 0.30 =	0.45
Prop. 2 1/4" HMA Surface N50	2.25	x 0.36 =	0.81
			<u>3.21</u>

Marshall Stability ≥ 1700

### BITUMINOUS MIX - AC GRADE - MAXIMUM % RAP

Surface Course	PG 64-22	Per Special Provision
Incidental HMA	PG 64-22	for RAP & RAS
Level Binder	PG 64-22	all HMA pay items

### GENERAL NOTES

Permanent striping will be installed by other forces within 14 days.  
Contractor will remove all short term markings at their expense after all permanent striping is in place.

IT SHALL BE THE CONTRACTOR'S RESPONSIBILITY TO DETERMINE THE ACTUAL LOCATION OF ALL UTILITY LOCATIONS .

### BITUMINOUS SURFACE REMOVAL AND TEMPORARY RAMP SCHEDULE

STATION	BIT. SURFACE REMOVAL - BUTT JOINT (SQ. YD.)	TEMPORARY RAMP (SQ. YD. - 3' Wide)
138+51	197	30
216+29	73	7
TOTALS	270	37