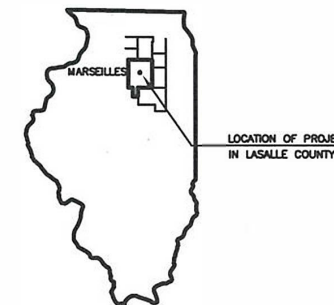


ROUTE NO.	SECTION	JOB NO.	PROJECT NO.	CONTRACT NO.	LOCAL AGENCY	TOTAL SHEETS	SHEET NUMBER
FAS 1277	17-00050-00-RS	C-93-051-17	KFXV(550)	87678	MARSEILLES	7	1

STATE OF ILLINOIS DEPARTMENT OF TRANSPORTATION PLANS FOR PROPOSED LOCAL AGENCY IMPROVEMENTS SURFACE TRANSPORTATION PROGRAM - URBAN TRUCK ACCESS ROUTE PROGRAM CITY OF MARSEILLES, LASALLE COUNTY FAS 1277 (COMMERCIAL STREET)



COMMERCIAL STREET STU / TARP
ROADWAY IMPROVEMENTS
CITY OF MARSEILLES, LASALLE CO.

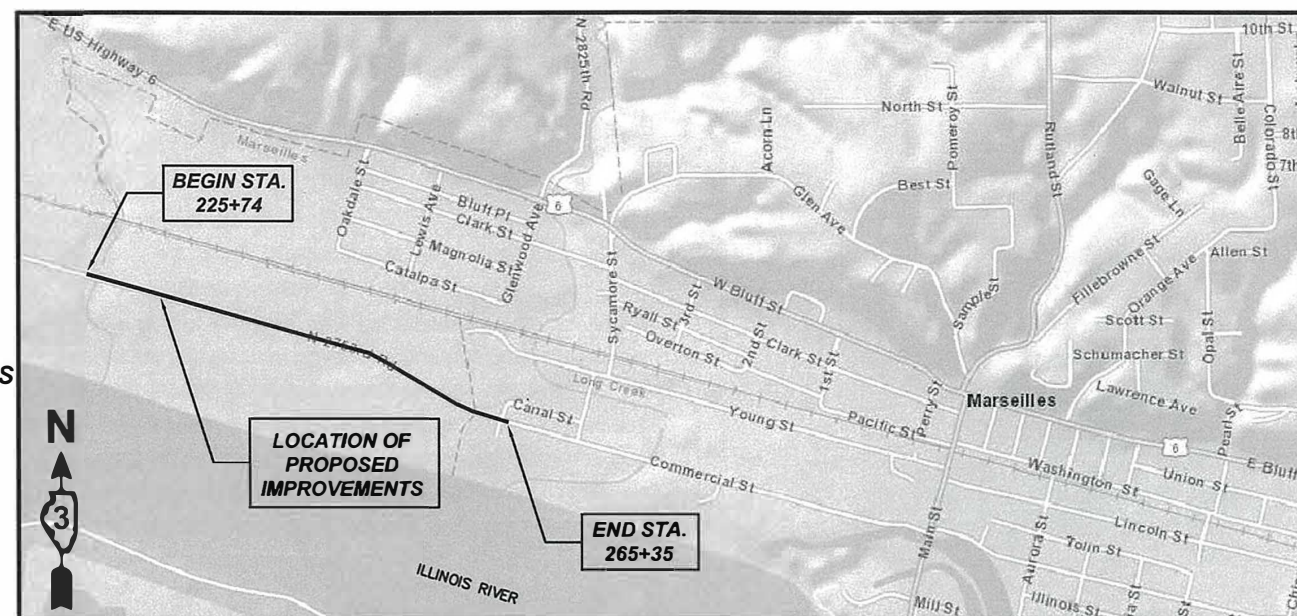
INDEX OF SHEETS

NO.	DESCRIPTION
1	COVER SHEET
2	GENERAL NOTES, LEGEND, HMA MIXTURE TABLE, SCHEDULES & SUMMARY OF QUANTITIES
3	TYPICAL SECTIONS & DETAILS
4-7	PLAN SHEETS

**SECTION 17-00050-00-RS
JOB NO. C-93-051-17
PROJECT NO. KFXV(550)
CONTRACT NO. 87678**

HIGHWAY STANDARDS

NO.	DESCRIPTION
280001-07	TEMPORARY EROSION CONTROL SYSTEMS
701201-04	LANE CLOSURE, 2L, 2W, DAY ONLY, FOR SPEEDS >= 45 MPH
701301-04	LANE CLOSURE, 2L, 2W, SHORT TIME OPERATIONS
701306-04	LANE CLOSURE, 2L, 2W, SLOW MOVING OPERATIONS DAY ONLY, FOR SPEEDS >= 45 MPH
701311-03	LANE CLOSURE, 2L, 2W, MOVING OPERATIONS - DAY ONLY
701501-06	URBAN LANE CLOSURE, 2L, 2W, UNDIVIDED
701901-07	TRAFFIC CONTROL DEVICES

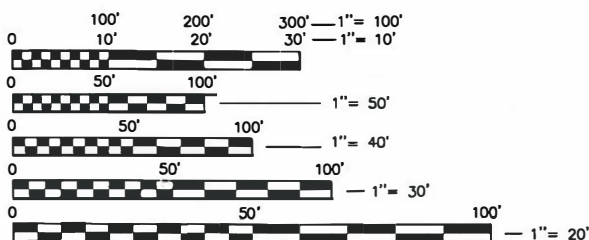


VICINITY MAP

NO SCALE
TOWNSHIP 33 NORTH, RANGE 4 EAST OF 3RD P.M.

GROSS LENGTH OF IMPROVEMENT = 0.750 MILES
NET LENGTH OF IMPROVEMENT = 0.750 MILES

COMMERCIAL STREET
FUNCTIONAL CLASSIFICATION - MAJOR COLLECTOR
ADT (2016) = 1,800
SDT (2028) = 2,000
DESIGN SPEED 45 MPH
POSTED SPEED 45 MPH



FULL SIZE PLANS HAVE BEEN PREPARED USING STANDARD ENGINEERING SCALES. REDUCED SIZED PLANS WILL NOT CONFORM TO STANDARD SCALES. IN MAKING MEASUREMENTS ON REDUCED PLANS, THE ABOVE SCALES MAY BE USED.

PREPARED BY:

Daniel C. Bittner DATE: 2/6/2018

DANIEL C. BITTNER
I.R.P.E. NO. 062-048359
EXPIRES NOVEMBER 30, 2019



**J.U.L.I.E. SYSTEM -
THE TOLL FREE TELEPHONE
NUMBER FOR JOINT UTILITY
INFORMATION FOR EXCAVATORS
IS 1-800-892-0123**

STATE OF ILLINOIS
DEPARTMENT OF TRANSPORTATION
DIVISION OF HIGHWAYS

SUBMITTED: *Fido G* 2018
CITY ENGINEER

PASSED: *2/22* 2018
DISTRICT ENGINEER OF LOCAL ROADS & STREETS

RELEASED FOR BIDS BASED ON LIMITED REVIEW: *2/22*
REGION 2 ENGINEER

PRINTED BY THE AUTHORITY OF THE STATE OF ILLINOIS

Professional Engineers & Land Surveyors
1304 Gemini Circle • Ottawa, IL 61350-1692
tel: 815-434-3925 • fax: 815-434-3953

**ETSCHIED, DUTTLINGER
& ASSOCIATES, INC.**



PROFESSIONAL DESIGN
FIRM # 184-000711
DATE PLOTTED:
FEBRUARY 6, 2018
DRAWN BY:
R.M.S.
CHECKED BY:
PROJECT NUMBER:
2057.117
DRAWING FILE:
J:\2057117_COVER.DWG

SHEET NO.

1 OF 7

GENERAL NOTES

- THE THICKNESS OF HOT-MIX ASPHALT ON THE PLANS IS THE NOMINAL THICKNESS. DEVIATIONS FROM THE NOMINAL THICKNESS WILL BE PERMITTED WHEN SUCH DEVIATIONS OCCUR DUE TO IRREGULARITIES IN THE EXISTING SURFACE ON WHICH THE HOT-MIX ASPHALT IS PLACED.
- THE FOLLOWING RATES OF APPLICATION HAVE BEEN ASSUMED IN CALCULATING PLAN QUANTITIES:

AGGREGATE BASE COURSE, TYPE B	2.05	TON/CU YD
BITUMINOUS MATERIALS (PRIME COAT)		
FOR AGGREGATE BASES	0.25	LB/SQ FT
FOR MILLED HMA & AGED HMA	0.05	LB/SQ FT
FOR HMA LIFTS	0.025	LB/SQ FT
HOT-MIX ASPHALT SURFACE COURSE, AND LEVELING BINDER	112	LBS/SQ YD/INCH
- SAW CUTTING OF HMA SURFACES SHALL BE CONSIDERED INCIDENTAL TO THE CONTRACT. THE MINIMUM SAW CUT DEPTH SHALL BE 1-1/2".

SUMMARY OF QUANTITIES

CODE NUMBER	PAY ITEM	UNIT	QUANTITY
CONSTRUCTION TYPE CODE: 0005			
40600275	BITUMINOUS MATERIALS (PRIME COAT)	POUND	23,888
40600290	BITUMINOUS MATERIALS (TACK COAT)	POUND	4,050
40600625	LEVELING BINDER (MACHINE METHOD), N50	TON	378
* 40600982	HOT-MIX ASPHALT SURFACE REMOVAL - BUTT JOINT	SQ YD	799
40603310	HOT-MIX ASPHALT SURFACE COURSE, MIX "C", N50	TON	820
40800050	INCIDENTAL HOT-MIX ASPHALT SURFACING	TON	72
44000155	HOT-MIX ASPHALT SURFACE REMOVAL, 1 1/2"	SQ YD	8,556
44000158	HOT-MIX ASPHALT SURFACE REMOVAL, 2 1/4"	SQ YD	440
48102100	AGGREGATE WEDGE SHOULDER, TYPE B	TON	25
* 60255500	MANHOLES TO BE ADJUSTED	EACH	1
67100100	MOBILIZATION	L SUM	1
70100450	TRAFFIC CONTROL AND PROTECTION, STANDARD 701201	L SUM	1
70100460	TRAFFIC CONTROL AND PROTECTION, STANDARD 701306	L SUM	1
70102620	TRAFFIC CONTROL AND PROTECTION, STANDARD 701501	L SUM	1
△ 78000200	THERMOPLASTIC PAVEMENT MARKING - LINE 4"	FOOT	12,876
△ 78000650	THERMOPLASTIC PAVEMENT MARKING - LINE 24"	FOOT	11

△ SPECIALTY ITEMS
* SEE SPECIAL PROVISIONS

LEGEND

	PROPOSED ALIGNMENT / ROADWAY CENTERLINE
	R.O.W. LINE
	EXISTING EDGE OF PAVEMENT
	EXISTING EDGE OF AGGREGATE SHOULDER
	EXISTING TOP OF SLOPE
	EXISTING DITCH FLOWLINE
	EXISTING GUARDRAIL
	EXISTING CULVERT
	EXISTING MANHOLE / INLET
	EXISTING MAILBOX
	POWER POLE
	POWER POLE WITH TRANSFORMER
	GUY WIRE
	SIGN
	EXISTING AGGREGATE SURFACE
	EXISTING CONCRETE SURFACE
	EXISTING BITUMINOUS SURFACE (DRIVEWAY)
	PROPOSED HMA SURFACE REMOVAL - BUTT JOINT & INCIDENTAL HMA SURFACING

ROUTE NO.	SECTION	JOB NO.	PROJECT NO.	CONTRACT NO.	LOCAL AGENCY	TOTAL SHEETS	SHEET NUMBER
FAS 1277	17-00050-00-RS	C-93-051-17	KFXV(550)	87678	MARSEILLES	7	2

ROADWAY PAVING	HMA SURFACE REMOVAL, 1-1/2"	HMA SURFACE REMOVAL, 2-1/4"	HMA SURFACE REMOVAL, BUTT JOINT	BIT. MATERIALS, PRIME COAT	BIT. MATERIALS, TACK COAT	HMA SURFACE COURSE, 1-1/2"	HMA LEVEL BINDER, 3/4"	AGG. WEDGE SHOULDER, TY B
STA. TO STA.	LT./RT.	S.Y.	S.Y.	S.Y.	POUND	POUND	TON	TON
225+74 229+12	Mainline				2,030		75.8	
225+74 226+04	Mainline			80.0				
225+74 229+00	RT.							12.0
225+74 229+12	LT.							12.6
229+12 264+12	Mainline	8,556.0			19,251	3,851	718.7	359.4
264+32 265+35	Mainline		300.7		677	136	25.3	12.6
TOTALS		8,556.0	300.7	80.0	21,958	3,987	819.8	372.0

DRIVEWAYS & INTERSECTION	HMA SURFACE REMOVAL, BUTT JOINT	HMA SURFACE REMOVAL, 2-1/4"	BIT. MATERIALS, PRIME COAT	BIT. MATERIALS, TACK COAT	INCIDENTAL HMA SURFACING, 1-1/2"	HMA LEVEL BINDER, 3/4"
STATION	LT./RT.	S.Y.	S.Y.	POUND	POUND	TON
229+00	RT.	38.7		87		3.3
230+65	RT.	23.2		52		1.9
232+60	RT.	44.2		100		3.7
238+50	RT.	18.9		43		1.6
241+20	RT.	27.7		62		2.3
242+70	RT.	33.9		76		2.8
244+25	RT.	23.4		53		2.0
246+20	RT.	23.0		52		1.9
255+40	LT.	37.8		85		3.2
259+00	LT.	67.4		152		5.7
261+45	RT.	42.8		96		3.6
261+15	LT.	100.1		225		8.4
262+65	LT.	20.2		45		1.7
263+00	RT.	217.4		489		18.3
264+60 (SPICER)	RT.		67.1	151	30	5.6
264+60 (SPICER)	LT.		72.0	162	33	6.1
TOTALS		718.7	139.1	1930	63	72.1

PAVEMENT MARKING	THPL. PVMT. MARKING - LINE 4" (CL, SKIP DASH)	THPL. PVMT. MARKING - LINE 4" (CL, DOUBLE YELLOW)	THPL. PVMT. MARKING - LINE 4" (EDGELINE)	THPL. PVMT. MARKING - LINE 24" (STOP BAR)
STA. TO STA.	LT./RT.	FOOT	FOOT	FOOT
225+74 242+68	Mainline	430		
242+68 265+60	Mainline		4,534	
225+74 265+60	LT. & RT.			7,912
264+30	RT.			11
TOTALS		430	4,534	7,912

HMA MIXTURE REQUIREMENT TABLE			
LOCATION(S):	ENTIRE PROJECT	ENTIRE PROJECT	ENTIRE PROJECT
MIXTURE USE(S):	HMA LEVEL BINDER	HMA SURFACE	HMA INCIDENTAL
BINDER GRADE (PG)	PG 64-22	PG 64-22	PG 64-22
Design Air Voids:	4.0% @ N50	4.0% @ N50	4.0% @ N50
Mixture Composition: (Mixture Gradation)	IL 9.5FG	IL 9.5	IL 9.5
Friction Aggregate		Mixture C	
Mixture Weight:	112.0 LB/SY/IN	112.0 LB/SY/IN	112.0 LB/SY/IN
Quality Management Program	QCQA	QCQA	QCQA
Sublot Size:	NA	NA	NA
Density Test Method:	Satisfaction of Engineer	LR 1030	Satisfaction of Engineer

COMMERCIAL STREET STU / TARP ROADWAY IMPROVEMENTS
 CITY OF MARSEILLES, LASALLE CO.

Professional Engineers & Land Surveyors
 1304 Gemini Circle • Ottawa, IL 61350-1692
 tel: 815-434-3925 • fax: 815-434-3953

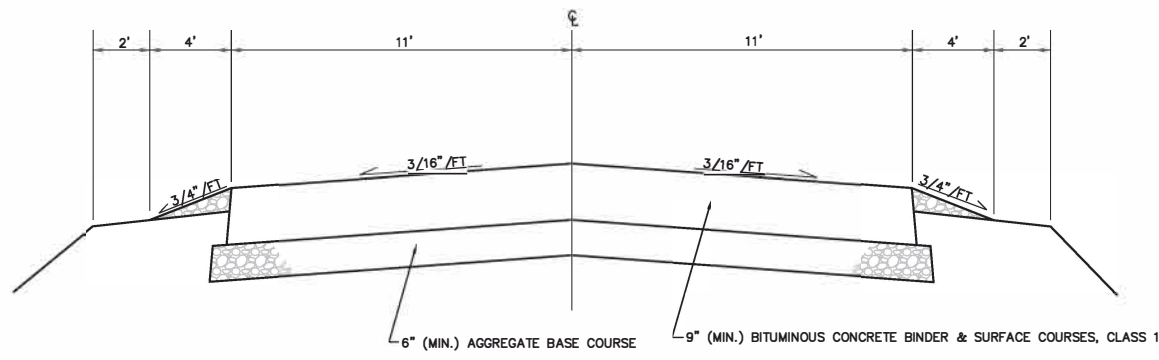
ETSCHEID, DUTTLINGER & ASSOCIATES, INC.



PROFESSIONAL DESIGN
 FIRM # 184-000711
 DATE PLOTTED:
 FEBRUARY 6, 2018
 DATE REVISED:
 MARCH 5, 2018
 DRAWN BY:
 R.M.S.
 PROJECT NUMBER:
 2057.117
 DRAWING FILE:
 J:\NOTES&DETAILS.DWG

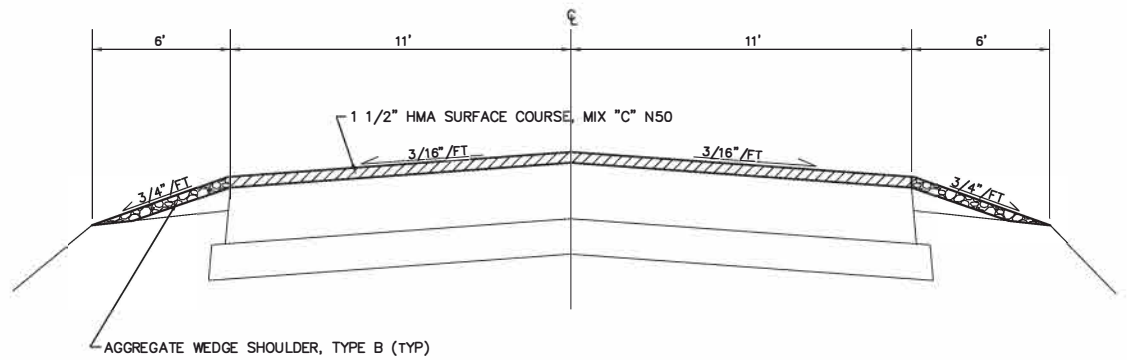
SHEET NO.

ROUTE NO.	SECTION	JOB NO.	PROJECT NO.	CONTRACT NO.	LOCAL AGENCY	TOTAL SHEETS	SHEET NUMBER
FAS 1277	17-00050-00-RS	C-93-051-17	KFXV(550)	87678	MARSEILLES	7	3



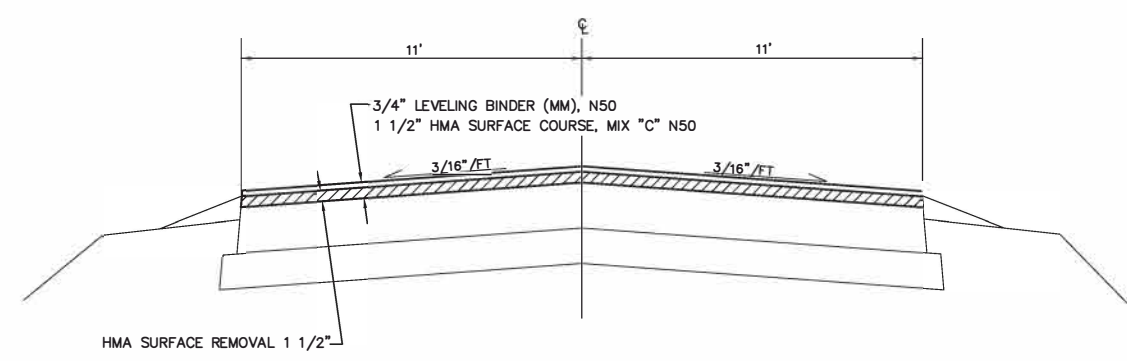
EXISTING TYPICAL SECTION

NOT TO SCALE
SUPERELEVATION SCHEDULE
 STA. 248+64.0 to STA. 250+41.0 - TRANSITION
 STA. 250+41.0 to STA. 253+20.3 - FULL SUPER - 0.06/FT
 STA. 253+20.3 to STA. 254+97.3 - TRANSITION



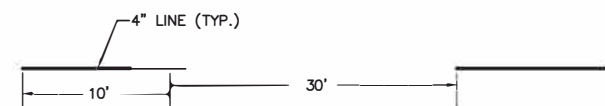
PROPOSED TYPICAL SECTION

NOT TO SCALE
 STA. 225+74 to 229+12



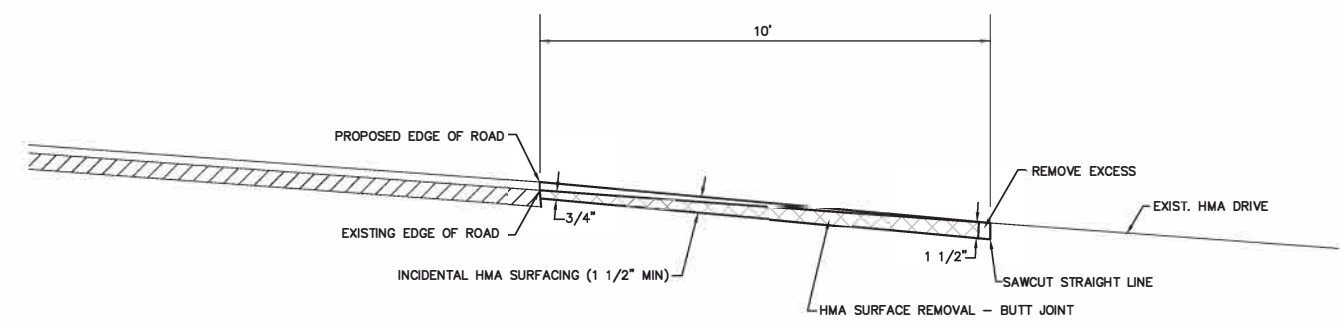
PROPOSED TYPICAL SECTION

NOT TO SCALE
 STA. 229+12 to 264+32
SUPERELEVATION SCHEDULE
 SEE EXISTING TYPICAL SECTION



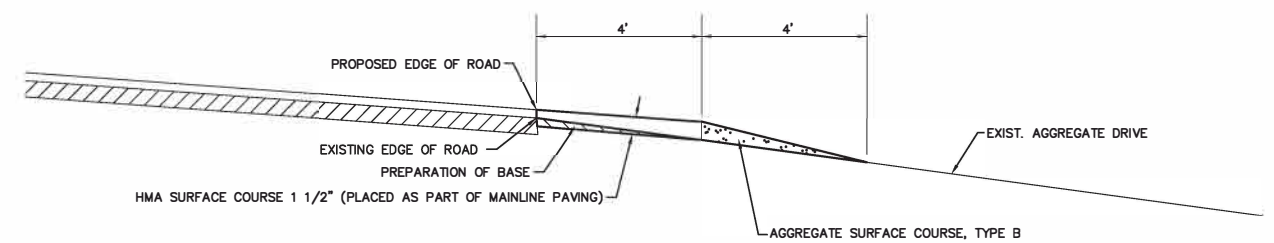
SKIP DASH DETAIL

NOT TO SCALE



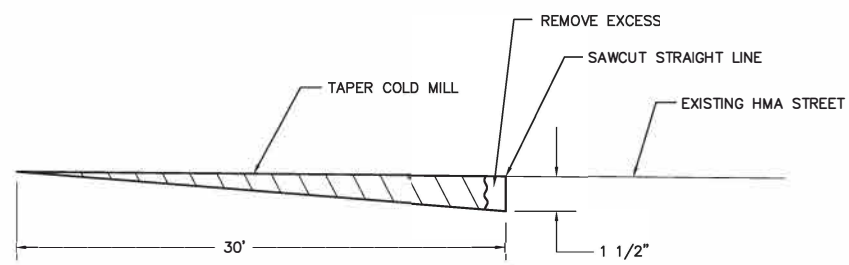
HMA DRIVEWAY DETAIL

NOT TO SCALE



AGGREGATE DRIVEWAY APRON DETAIL

NOT TO SCALE

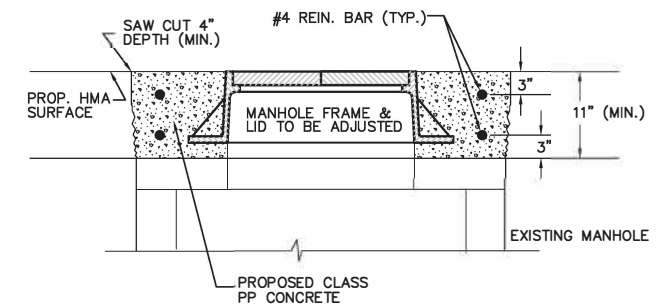
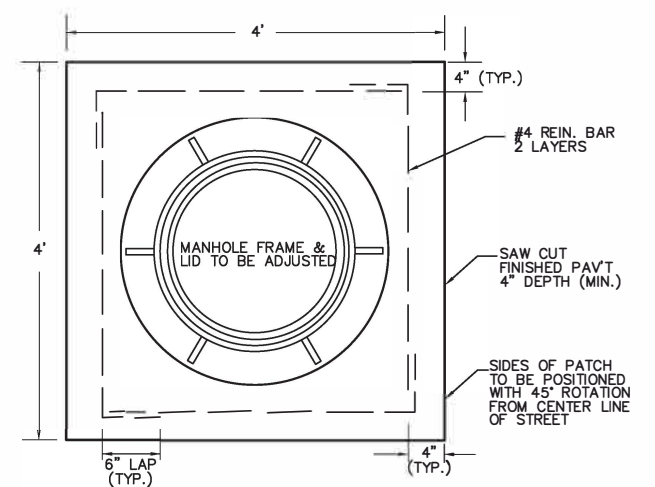


MAINLINE BUTT JOINT DETAIL

NOT TO SCALE

DETAIL FOR MANHOLE ADJUSTMENT

NOT TO SCALE



**COMMERCIAL STREET STU / TARP
 ROADWAY IMPROVEMENTS
 CITY OF MARSEILLES, LASALLE CO.**

Professional Engineers & Land Surveyors
 1304 Gemini Circle • Ottawa, IL 61350-1692
 tel: 815-434-3925 • fax: 815-434-3953

**ETSCHEID, DUTTLINGER
 & ASSOCIATES, INC.**

PE

PROFESSIONAL DESIGN
 FIRM # 184-000711
 DATE PLOTTED:
 FEBRUARY 6, 2018
 DRAWN BY:
 R.M.S.
 CHECKED BY:

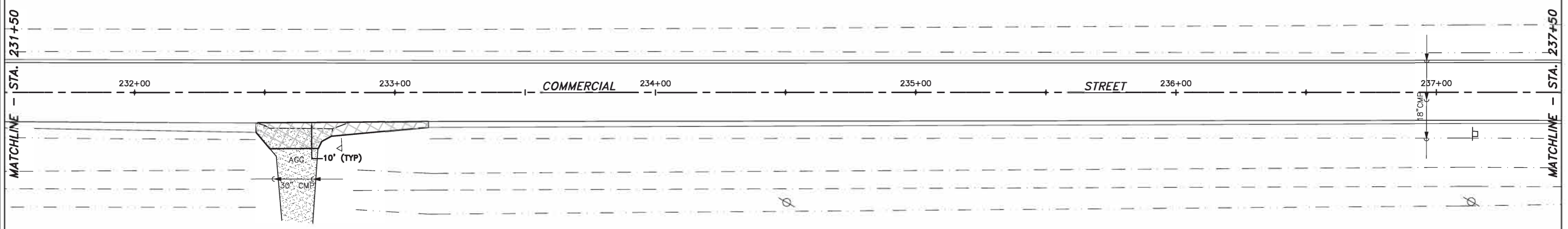
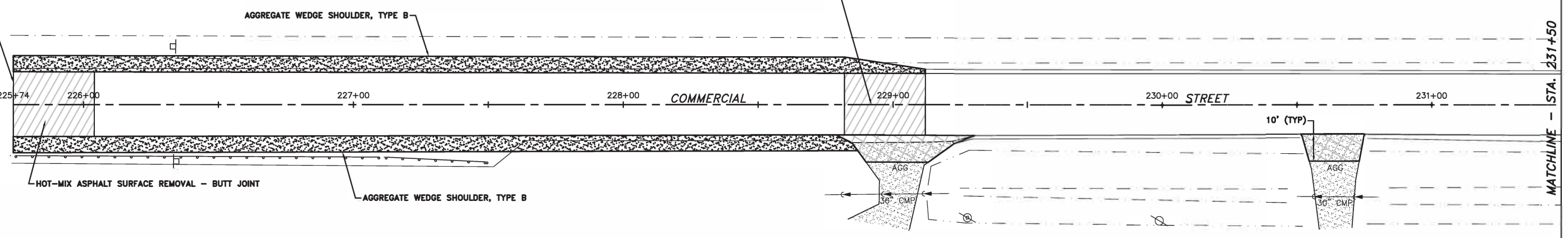
PROJECT NUMBER:
 2057.117
 DRAWING FILE:
 J:\NOTES&DETAILS.DWG

SHEET NO.
3 OF 7

ROUTE NO.	SECTION	JOB NO.	PROJECT NO.	CONTRACT NO.	LOCAL AGENCY	TOTAL SHEETS	SHEET NUMBER
FAS 1277	17-00050-00-RS	C-93-051-17	KFXV(550)	87678	MARSEILLES	7	4

BEGIN ROADWAY IMPROVEMENTS STA. 225+74

STA. 228+82 TO STA. 229+12
HOT-MIX ASPHALT SURFACE REMOVAL, 1-1/2"
TAPER TO 0" IN 30 FT.



**COMMERCIAL STREET STU / TARP
ROADWAY IMPROVEMENTS
CITY OF MARSEILLES, LASALLE CO.**

Professional Engineers & Land Surveyors
1304 Gemini Circle • Ottawa, IL 61350-1692
tel: 815-434-3925 • fax: 815-434-3953

**ETSCHEID, DUTTLINGER
& ASSOCIATES, INC.**

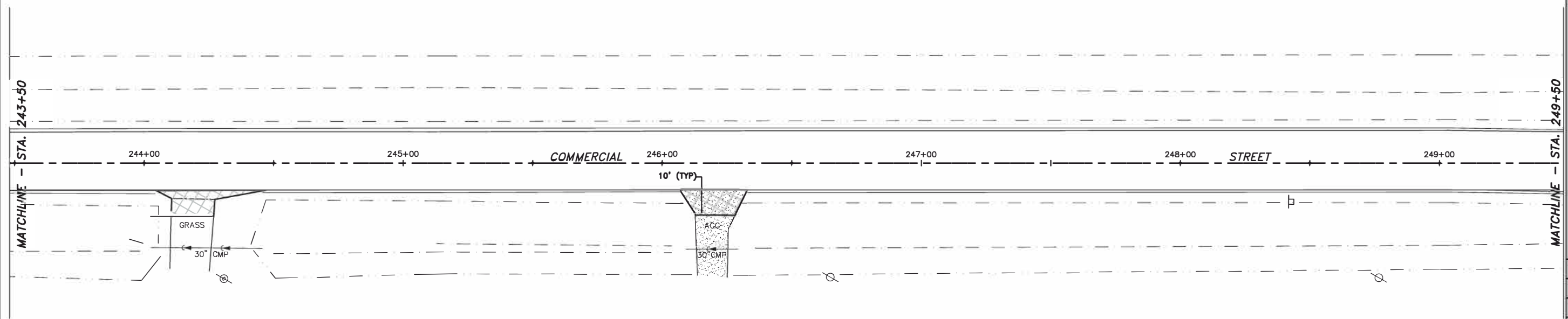
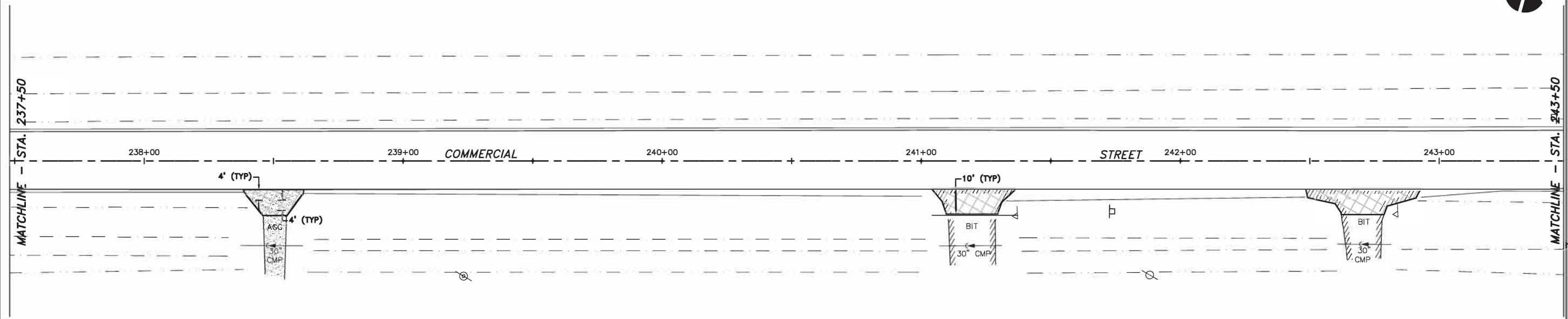


PROFESSIONAL DESIGN
FIRM # 184-000711
DATE PLOTTED:
FEBRUARY 6, 2018
DRAWN BY:
R.M.S.
CHECKED BY:

PROJECT NUMBER:
2057.117
DRAWING FILE:
J:2057117_PLPR1.DWG

**SHEET NO.
4 OF 7**

ROUTE NO.	SECTION	JOB NO.	PROJECT NO.	CONTRACT NO.	LOCAL AGENCY	TOTAL SHEETS	SHEET NUMBER
FAS 1277	17-00050-00-RS	C-93-051-17	KFXV(550)	87678	MARSEILLES	7	5



**COMMERCIAL STREET STU / TARP
ROADWAY IMPROVEMENTS
CITY OF MARSEILLES, LASALLE CO.**

**ETSCHEID, DUTTLINGER
& ASSOCIATES, INC.**
Professional Engineers & Land Surveyors
1304 Gemini Circle • Ottawa, IL 61350-1692
tel: 815-434-3925 • fax: 815-434-3953

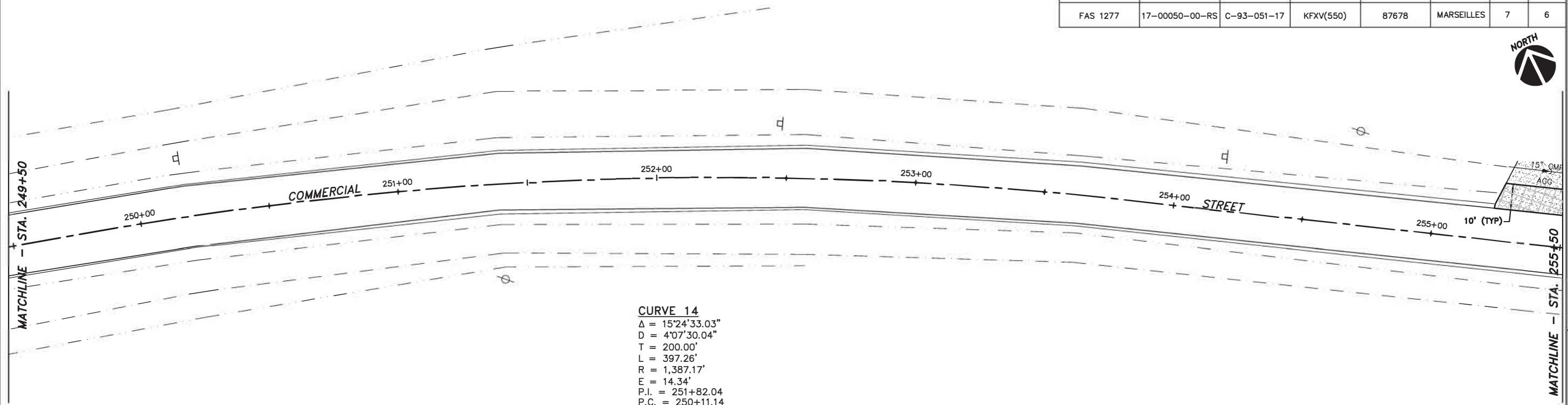
**ETSCHEID, DUTTLINGER
& ASSOCIATES, INC.**
Professional Engineers & Land Surveyors
1304 Gemini Circle • Ottawa, IL 61350-1692
tel: 815-434-3925 • fax: 815-434-3953

EDA
PROFESSIONAL DESIGN
FIRM # 184-000711
DATE PLOTTED:
FEBRUARY 6, 2018
DRAWN BY:
R.M.S.
CHECKED BY:
PROJECT NUMBER:
2057.117
DRAWING FILE:
J:\2057117_PLPR1.DWG

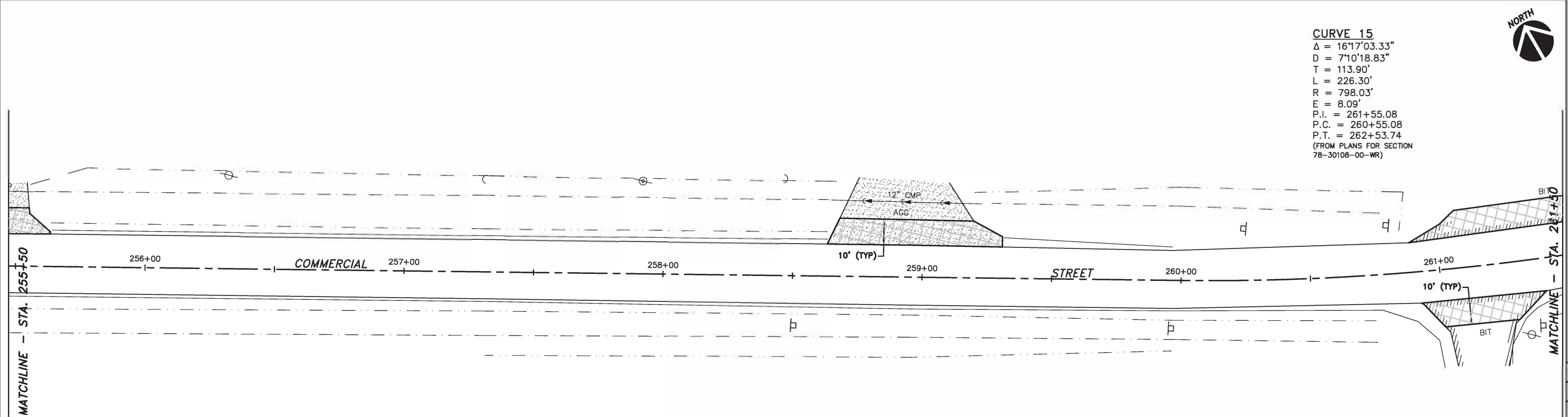
**SHEET NO.
5 OF 7**

COMMERCIAL STREET - STA. 237+50 TO STA. 249+50

ROUTE NO.	SECTION	JOB NO.	PROJECT NO.	CONTRACT NO.	LOCAL AGENCY	TOTAL SHEETS	SHEET NUMBER
FAS 1277	17-00050-00-RS	C-93-051-17	KFXV(550)	87678	MARSEILLES	7	6



CURVE 14
 $\Delta = 15^{\circ}24'33.03''$
 $D = 4^{\circ}07'30.04''$
 $T = 200.00'$
 $L = 397.26'$
 $R = 1,387.17'$
 $E = 14.34'$
 $P.I. = 251+82.04$
 $P.C. = 250+11.14$
 $P.T. = 253+50.60$
 (FROM PLANS FOR SECTION
 78-30108-00-WR)



CURVE 15
 $\Delta = 16^{\circ}17'03.33''$
 $D = 7^{\circ}10'18.83''$
 $T = 113.90'$
 $L = 226.30'$
 $R = 798.03'$
 $E = 8.09'$
 $P.I. = 261+55.08$
 $P.C. = 260+55.08$
 $P.T. = 262+53.74$
 (FROM PLANS FOR SECTION
 78-30108-00-WR)

**COMMERCIAL STREET STU / TARP
 ROADWAY IMPROVEMENTS
 CITY OF MARSEILLES, LASALLE CO.**

Professional Engineers & Land Surveyors
 1304 Gemini Circle • Ottawa, IL 61350-1692
 tel: 815-434-3925 • fax: 815-434-3953

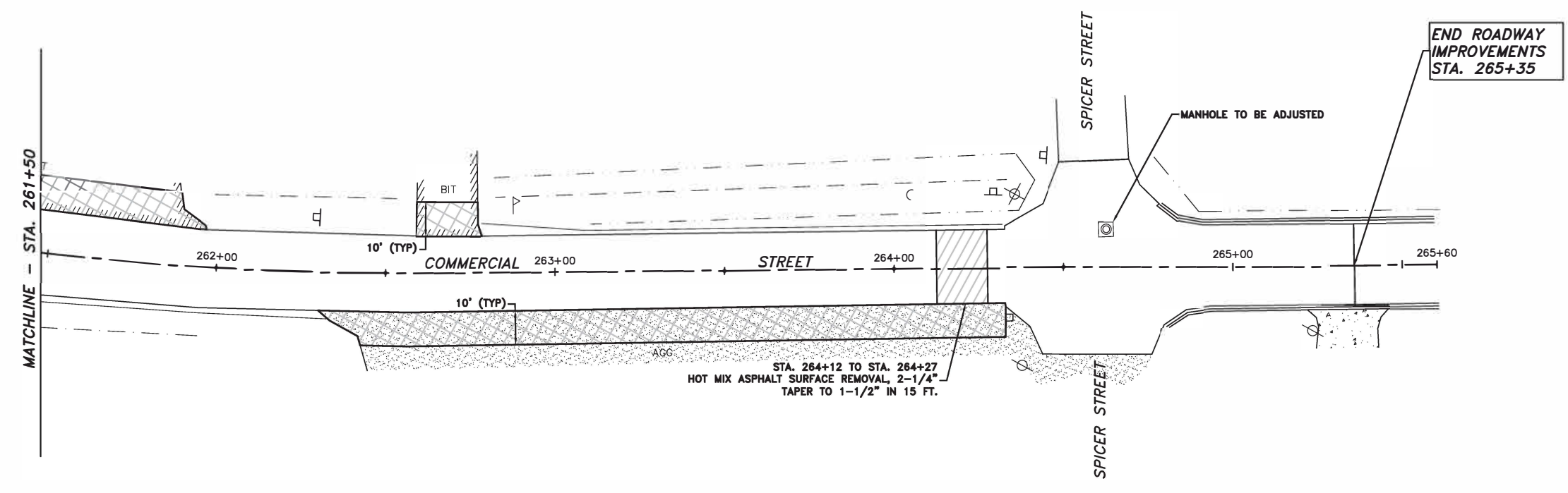
**ETSCHEID, DUTTLINGER
 & ASSOCIATES, INC.**



PROFESSIONAL DESIGN
 FIRM # 184-000711
 DATE PLOTTED:
 FEBRUARY 6, 2018
 DRAWN BY:
 R.M.S.
 CHECKED BY:
 PROJECT NUMBER:
 2057.117
 DRAWING FILE:
 J:12057117_PLPR1.DWG

SHEET NO.
6 OF 7

ROUTE NO.	SECTION	JOB NO.	PROJECT NO.	CONTRACT NO.	LOCAL AGENCY	TOTAL SHEETS	SHEET NUMBER
FAS 1277	17-00050-00-RS	C-93-051-17	KFXV(550)	87678	MARSEILLES	7	7



**COMMERCIAL STREET STU / TARP
ROADWAY IMPROVEMENTS
CITY OF MARSEILLES, LASALLE CO.**

Professional Engineers & Land Surveyors
1304 Gemini Circle • Ottawa, IL 61350-1692
tel: 815-434-3925 • fax: 815-434-3953

**ETSCHEID, DUTTLINGER
& ASSOCIATES, INC.**



PROFESSIONAL DESIGN
FIRM # 184-000711
DATE PLOTTED:
FEBRUARY 6, 2018
DRAWN BY:
R.M.S.
CHECKED BY:
PROJECT NUMBER:
2057.117
DRAWING FILE:
J:\2057117_PLPR1.DWG

SHEET NO.
7 OF 7