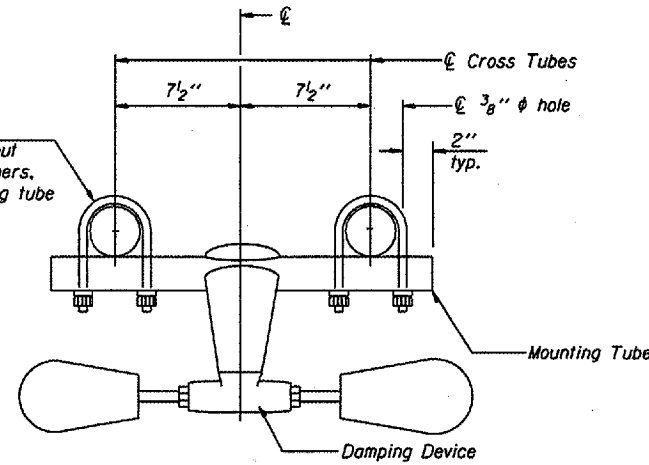
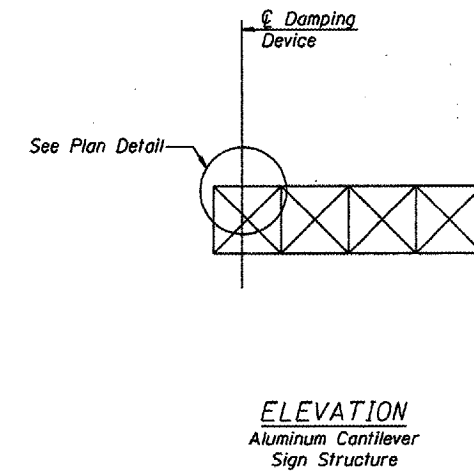


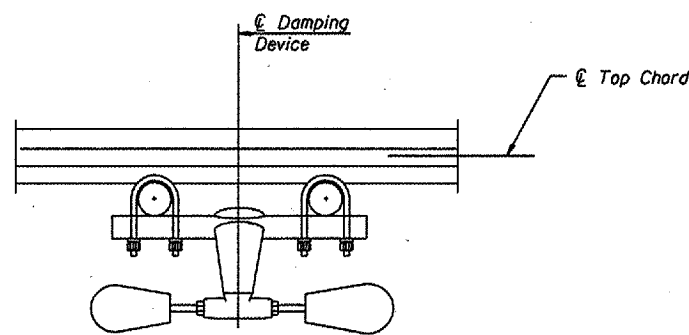
PLAN DETAIL



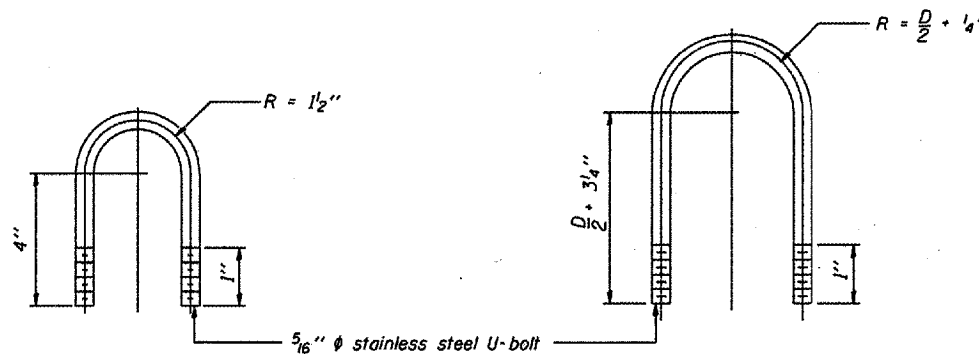
TRUSS DAMPING  
DEVICE CONNECTION DETAIL



ELEVATION  
Aluminum Cantilever  
Sign Structure



SECTION A-A



DAMPING DEVICE MOUNTING  
TUBE U-BOLT DETAIL  
(Typical)

TOP CHORD TO CROSS TUBE  
U-BOLT DETAIL  
(Typical)

GENERAL NOTES

- Damper: One damper per truss. (31 lbs. Stockbridge-Type Aluminum)  
Materials: Aluminum tubes shall be ASTM B221 alloy 6061 temper T6

- This detail applies to the following overhead sign structures:  
1. 4C0721474L003.41  
2. 4C090S116L005.9  
3. 4C072U024R022.76

CANTILEVER SIGN STRUCTURE  
DAMPING DEVICE

District 4  
Overhead Sign Structure  
Repair and Replacement

DESIGNED -	20
CHECKED -	EXAMINED
DRAWN -	PASSED
CHECKED -	ENGINEER OF BRIDGES AND STRUCTURES

OSC-A-D

1-7-05