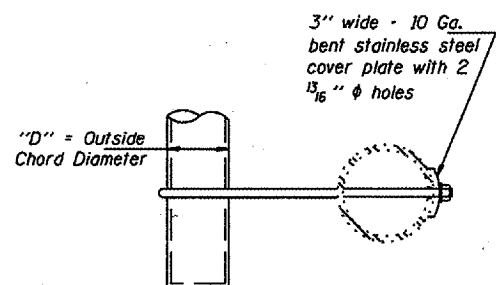
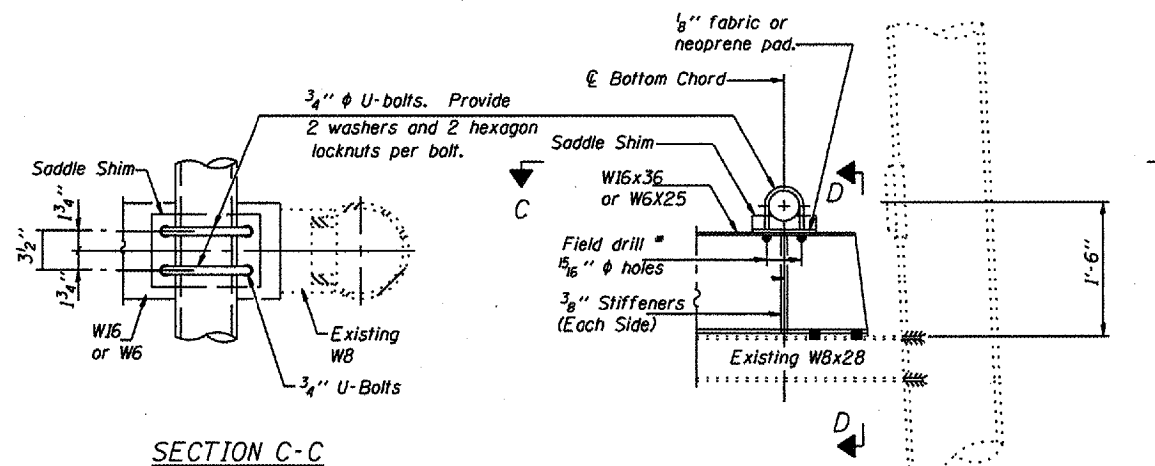


SIDE VIEW

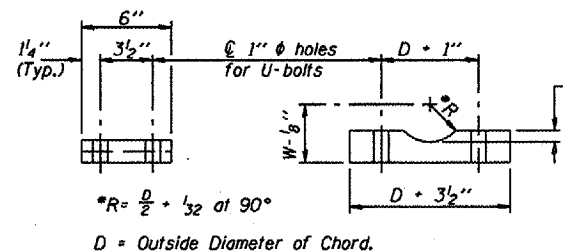


SECTION B-B



SECTION C-C

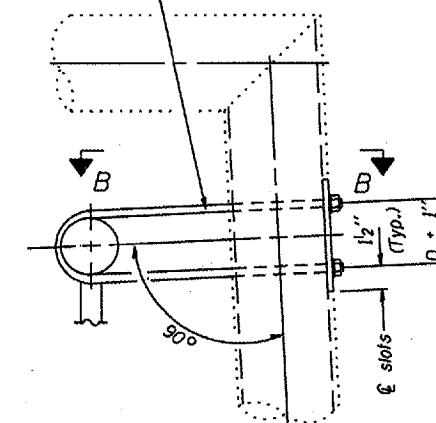
DETAIL C



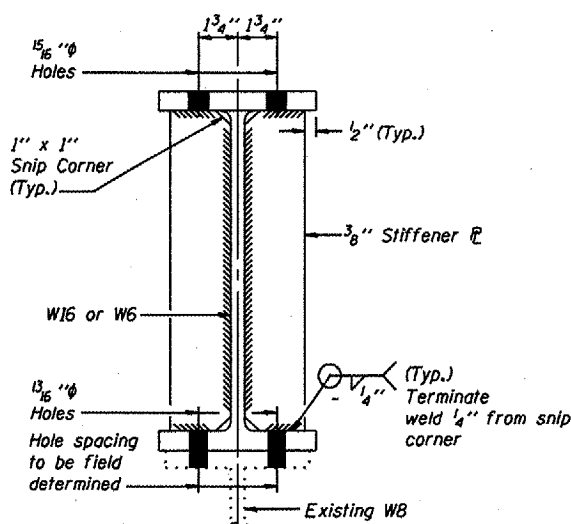
SADDLE SHIM DETAIL

ASTM B26 Alloy 356-F  
or  
ASTM B209 Alloy 6061-T651  
(4 required per sign truss)

3/4" stainless steel U-bolt. Provide two washers and two hexagon locknuts. Field drill 13/16" holes through pipe, (4 holes required per pipe)



DETAIL A



SECTION D-D

OVERHEAD SIGN STRUCTURES  
EXISTING SUPPORT FRAME  
RETROFIT for ALUMINUM TRUSS

District 6  
Overhead Sign  
Structure Replacement

DESIGNED	
CHECKED	
DRAWN	
CHECKED	

EXAMINED	20
PASSED	ENGINEER OF STRUCTURAL SERVICES
	ENGINEER OF BRIDGES AND STRUCTURES