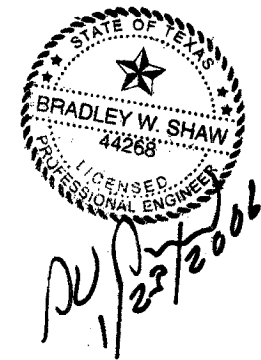
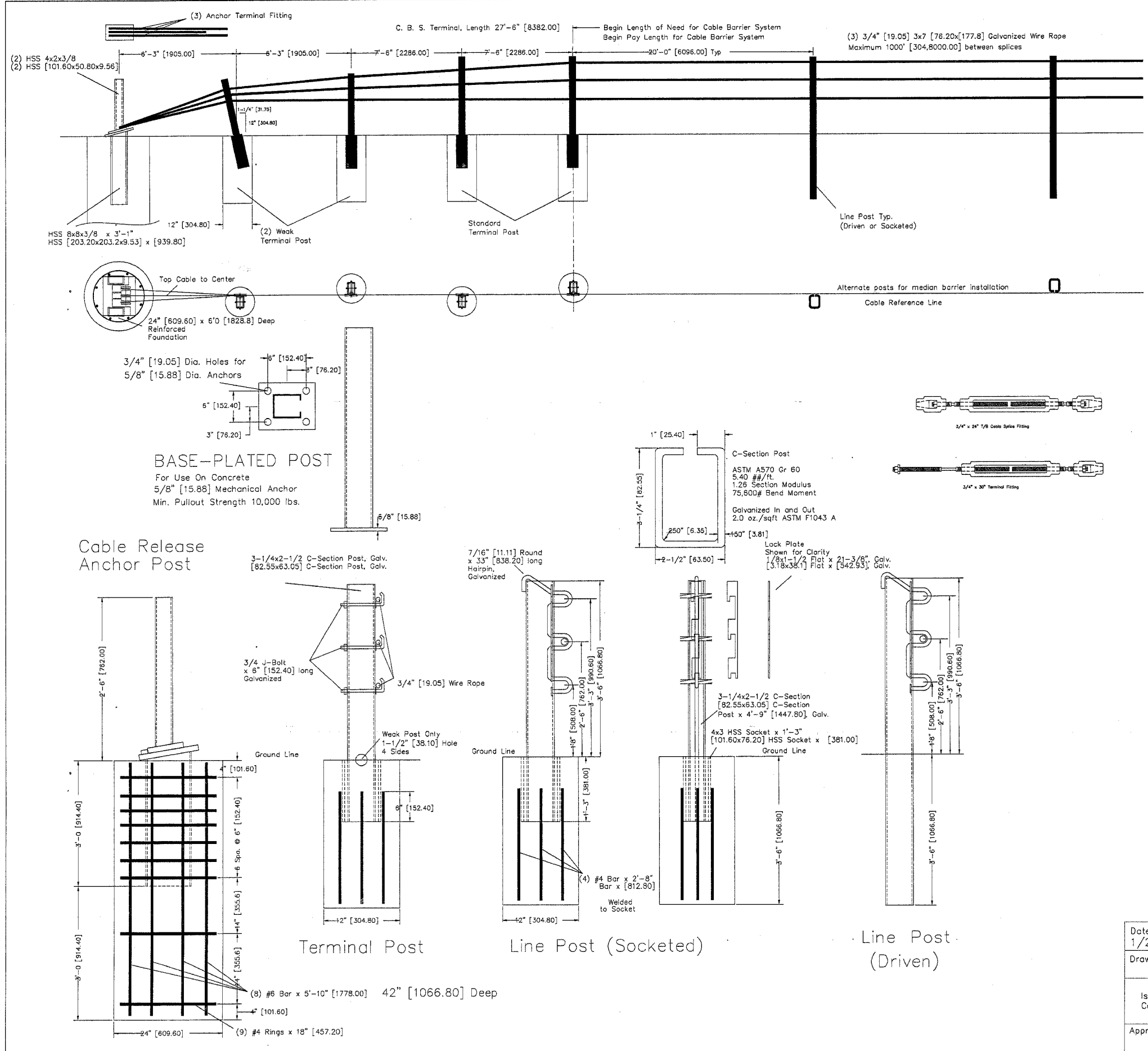


FAI RTE	SECTION	COUNTY	TOTAL SHEETS	SHEET NO.
80	99-1-1-3	WILL	34	22
STA.	STA.	ILLINOIS	FED. AID PROJECT	
FED. ROAD DIST. NO.				

GENERAL NOTES

- For additional information contact Gibraltar, Inc. at 1-800-495-8957.
- All concrete shall be class A.
- All posts shall be socketed unless otherwise specified.
- For additional information: See the manufacturer's product manual.
- For payment see special specification "Cables Barrier System".
- The Cable Barrier System is designed for bi-directional traffic flows. See the manufacturer's product manual for placement adjacent to the guardrail end treatments.
- The Cable Barrier System shall be installed on median shoulders or on depressed medians with slopes of 6:1 or flatter without obstructions, depressions, etc. that may significantly affect the stability of an errant vehicle.
- The Cable Barrier System is accepted by the FHWA Test Level - 4
- See the MUTCD for proper "Barrier" delineation
- Rock Clause: Where solid rock is encountered:
 - For socketed post, continue digging 12" diameter, 15" deep into rock or the required plan depth whichever comes first.
 - For driven post, core drill a 4" diameter hole 18" deep into rock or the required plan depth, whichever comes first.
 - For Anchor post, continue digging 24" diameter, 30" deep into rock or the required plan depth, whichever comes first.



Date 1/20/06	TL4-20M ILL	Gibraltar 320 Southland Road Burnet, Texas 78611
Drawn by TJ	20'-0"	
Issued For Construction		Cable Barrier System
Approver	Date	

1 May 2005
Patent Pending