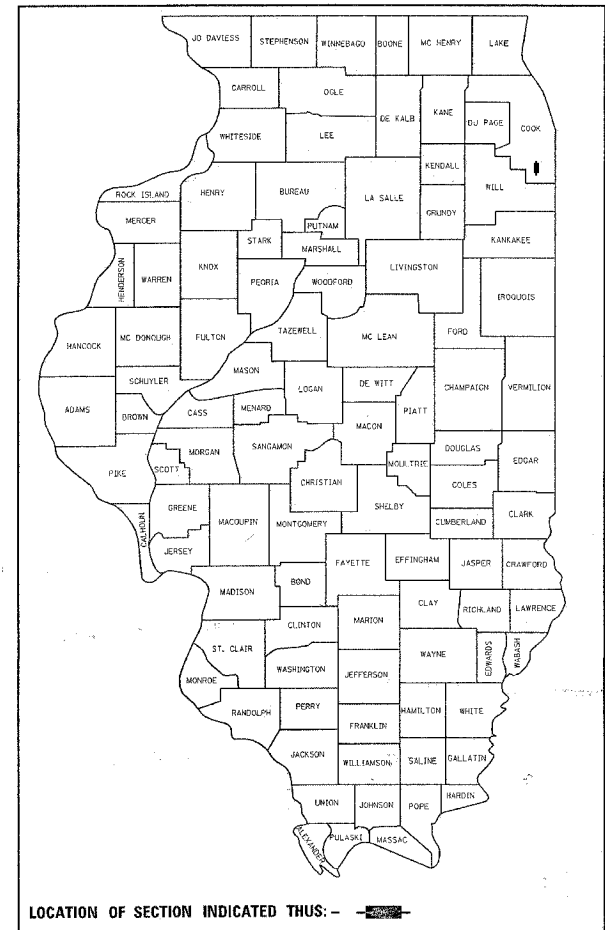


F.A.P. RTE.	SECTION	COUNTY	TOTAL SHEETS	SHEET NO.
350	101 TS-2	COOK	26	1
			+2	
			28	

D-91-092-06



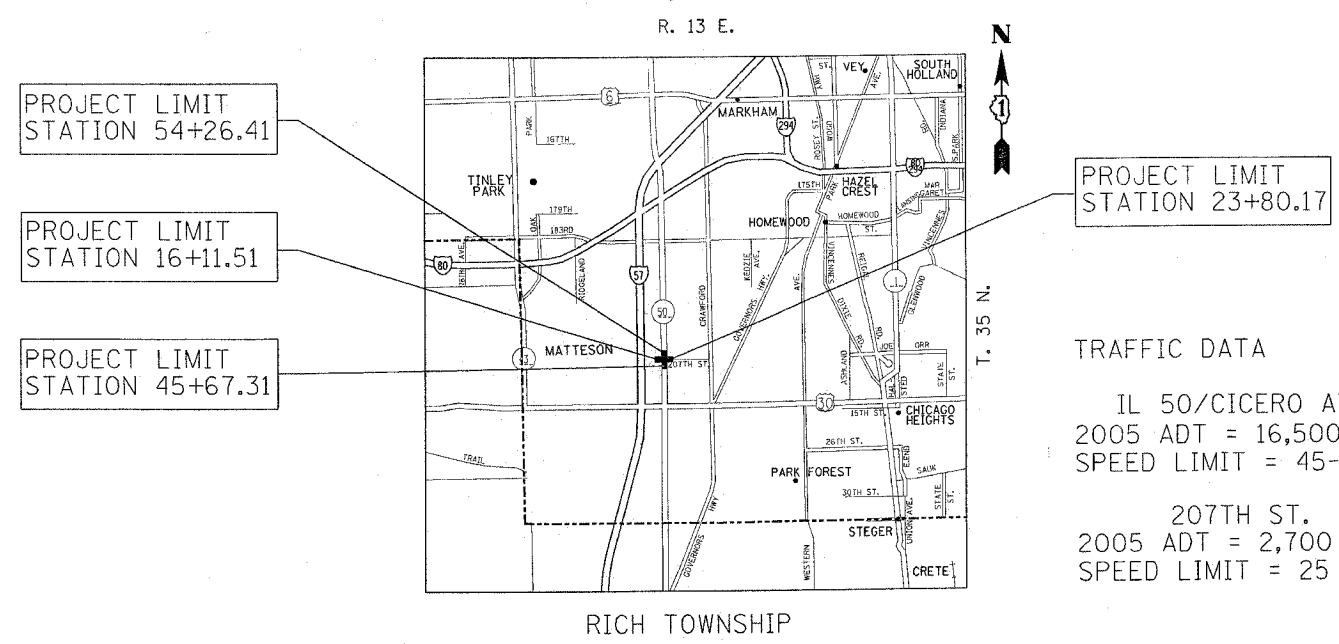
LOCATION OF SECTION INDICATED THIS: - [shaded area] -

**STATE OF ILLINOIS**  
**DEPARTMENT OF TRANSPORTATION**  
**DIVISION OF HIGHWAYS**  
**PROPOSED**  
**HIGHWAY PLANS**  
**F.A.P. 350: IL 50 (CICERO AVENUE)**  
**AT 207TH STREET / BIRCHWOOD LANE**  
**SECTION: 101 TS-2**  
**SIGNAL INSTALLATION**  
**PROJECT: ACHPP-HPP-2768 (001)**  
**COOK COUNTY**  
**C-91-092-06**

FOR INDEX OF SHEETS, SEE SHEET NO. 2

PROJECT LOCATED IN THE VILLAGE OF MATTESSON

DISTRICT ONE - PLAN PREPARATION ENGINEER: KEN ENG / J.P. CHANG (847) 705-4432



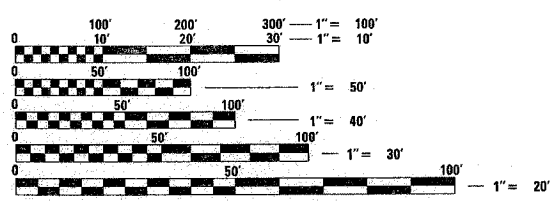
LOCATION MAP

207TH GROSS AND NET LENGTH OF PROJECT = 768.66 FEET  
 ILL 50 GROSS AND NET LENGTH OF PROJECT = 859.10 FEET

PROJECT LIMIT STATION 23+80.17

TRAFFIC DATA  
 IL 50/CICERO AVE.  
 2005 ADT = 16,500  
 SPEED LIMIT = 45-50 MPH  
 207TH ST.  
 2005 ADT = 2,700  
 SPEED LIMIT = 25 MPH

SCALE: NONE



FULL SIZE PLANS HAVE BEEN PREPARED USING STANDARD ENGINEERING SCALES. REDUCED SIZED PLANS WILL NOT CONFORM TO STANDARD SCALES. IN MAKING MEASUREMENTS ON REDUCED PLANS, THE ABOVE SCALES MAY BE USED.

J.U.L.I.E.  
 JOINT UTILITY LOCATION INFORMATION FOR EXCAVATION  
 1-800-892-0123

CONTRACT NO. 60A64

**STATE OF ILLINOIS**  
**DEPARTMENT OF TRANSPORTATION**  
**DIVISION OF HIGHWAYS**  
 SUBMITTED Feb. 10 2006  
Diane M. O'Keefe Esq.  
 DEPUTY DIRECTOR OF HIGHWAYS, REGION ENGINEER  
March 24 2006  
Mike Neri, P.E.  
 ENGINEER OF DESIGN AND ENVIRONMENT  
March 24 2006  
Milton P. Seep, P.E.  
 DIRECTOR OF HIGHWAYS, CHIEF ENGINEER

**PRINTED BY THE AUTHORITY OF THE STATE OF ILLINOIS**