

CONTRACT 60A93

FAU RTE.	SECTION	COUNTY	TOTAL SHEETS	SHEET NO.
3778	2005-080T	COOK	10	1

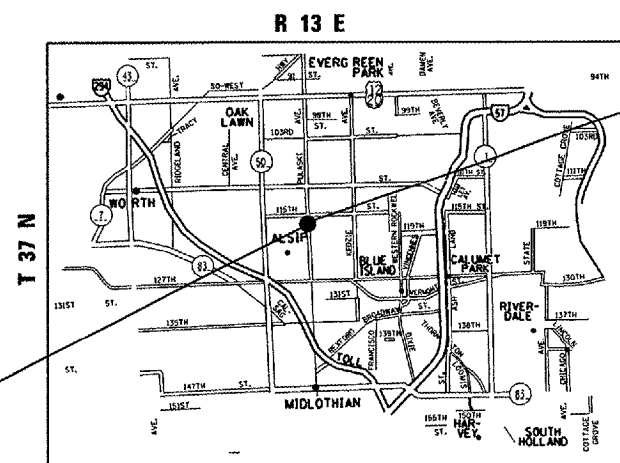
STATE OF ILLINOIS  
DEPARTMENT OF TRANSPORTATION  
DIVISION OF HIGHWAYS

# PLANS FOR PROPOSED HIGHWAY

FAU ROUTE 3778: CRAWFORD Avenue  
AT 117th ST.  
SECTION: 2005-080T  
DRAINAGE CORRECTION  
COOK COUNTY  
C-91-131-06

FOR INDEX OF SHEETS, SEE SHEET NO. 2

IMPROVEMENT LOCATED IN  
THE VILLAGE OF ALSIP



STRUCTURE 6  
STA. 154 + 15

TRAFFIC DATA:  
2002 ADT = 36,200

POSTED SPEED LIMIT = 45 MPH

STRUCTURE 1  
STA. 152 + 58

STATE OF ILLINOIS  
DEPARTMENT OF TRANSPORTATION  
DIVISION OF HIGHWAYS

SUBMITTED Feb 17 2006  
Diane M. O'Keefe  
DEPUTY DIRECTOR OF HIGHWAYS, REGION ENGINEER

March 24 2006  
Mike Hine  
ENGINEER OF DESIGN AND ENVIRONMENT

March 24 2006  
Milton R. Sees P.E.  
DIRECTOR OF HIGHWAYS/CHIEF ENGINEER

PRINTED BY AUTHORITY OF THE  
STATE OF ILLINOIS

DISTRICT ONE - DESIGN - PLAN PREPARATION ENGINEER : KEN ENG / ROBERT BORO (847) 705-4178

J.U.L.I.E.  
JOINT UTILITY LOCATION INFORMATION FOR EXCAVATION  
1-800-892-0123

CONTRACT NO. 60A93

REF-  
REF-  
REF-

CONTRACT 60A93

F.A.U. RTE.	SECTION	COUNTY	TOTAL SHEETS	SHEET NO.
3778	2005-080T	COOK	10	2
STA.		TO STA.		
FED. ROAD DIST. NO. 1		ILLINOIS	FED. AID PROJECT	

INDEX OF SHEETS

<u>SHEET NO.</u>	<u>DESCRIPTION</u>
1	TITLE SHEET
2	INDEX OF SHEETS, STATE STANDARDS AND GENERAL NOTES
3	SUMMARY OF QUANTITIES
4	PLAN DETAIL & TYP. SECTION
5-6	STRUCTURE DETAILS
7-8	CHECK VALVE DETAIL DETAILS
9	TRAFFIC CONTROL AND PROTECTION FOR SIDE ROADS, INTERSECTIONS, AND DRIVEWAYS
10	TEMPORARY INFORMATION SIGNING

GENERAL NOTES

BEFORE STARTING ANY EXCAVATION, THE CONTRACTOR SHALL CALL "JULIE" AT 800-892-0123. FOR FIELD LOCATIONS OF BURIED ELECTRIC, TELEPHONE AND GAS FACILITIES. (48 HOUR NOTIFICATION IS REQUIRED)

THE CONTRACTOR SHALL COORDINATE CONSTRUCTION ACTIVITIES WITH UTILITY COMPANIES AND THE VILLAGE OF ALSIP

THE CONTRACTOR WILL NOT BE ALLOWED TO SET UP A YARD OR FIELD OFFICE ON STATE PROPERTY WITHOUT WRITTEN PERMISSION FROM THE DEPARTMENT.

THE CONTRACTOR SHALL VERIFY THE SIZE OF THE PIPES BEFORE ORDERING CHECK VALVES

THE CHECK VALVES SHALL HAVE 2" TO 3" OF CRACKING PRESSURE

ALL CLASS B PAVEMENT PATCHING SHALL BE CONSTRUCTED UTILIZING THE "CAST IN PLACE" ALTERNATIVE ACCORDING TO STATE HIGHWAY STD. 420111 FOR "PCC PAVEMENT ROUNDS".

LIST OF STANDARDS

420111-01	PCC PAVEMENT ROUNDOUTS
420701-01	PAVEMENT FABRIC
442101-05	CLASS B PATCHES
701301-02	LANE CLOSURE 2L, 2W , SHORT TIME OPERATIONS
701606-04	URBAN LANE CLOSURE, MULTILANE 1W OR 2W WITH MOUNTABLE MEDIAN
701701-04	URBAN LANE CLOSURE, MULTILANE INTERSECTION
702001-06	TRAFFIC CONTROL DEVICES

REVISIONS		ILLINOIS DEPARTMENT OF TRANSPORTATION
NAME	DATE	
		INDEX OF SHEETS, LIST OF STANDARDS AND GENERAL NOTES
SCALE: VERT.      DRAWN BY FG		CHECKED BY
DATE 2/28/2006		

F.A. J. RTE.	SECTION	COUNTY	TOTAL SHEETS	SHEET NO.
3778	2005-080T	COOK	10	3
FED. ROAD DIST. NO. 1		ILLINOIS	HIGHWAY PROJECT	

SUMMARY OF QUANTITIES		CONSTRUCTION TYPE CODE		
CODE NO	ITEM	UNIT	TOTAL QUANTITIES	URBAN 100% STATE Y007
X0324718	CHECK VALVE 16-INCH	EACH	1	1
X0325235	CHECK VALVE 40-INCH	EACH	1	1
44200970	CLASS B PATCHES, TYPE II, 10 IN	SO YD	12	12
67100100	MOBILIZATION	L SUM	1	1
70102635	TRAFFIC CONTROL AND PROTECTION, STANDARD 701701	L SUM	1	1
60257900	MANHOLE TO BE RECONSTRUCTED	EACH	1	1
70102625	TRAFFIC CONTROL AND PROTECTION, STANDARD 701606	L SUM	1	1
X0322256	TEMPORARY INFORMATION SIGNING	SO FT	48	48
44213200	SAW CUTS	FOOT	63	63
20017202	DOWEL BARS 1 1/2"	EACH	22	22

Rev.

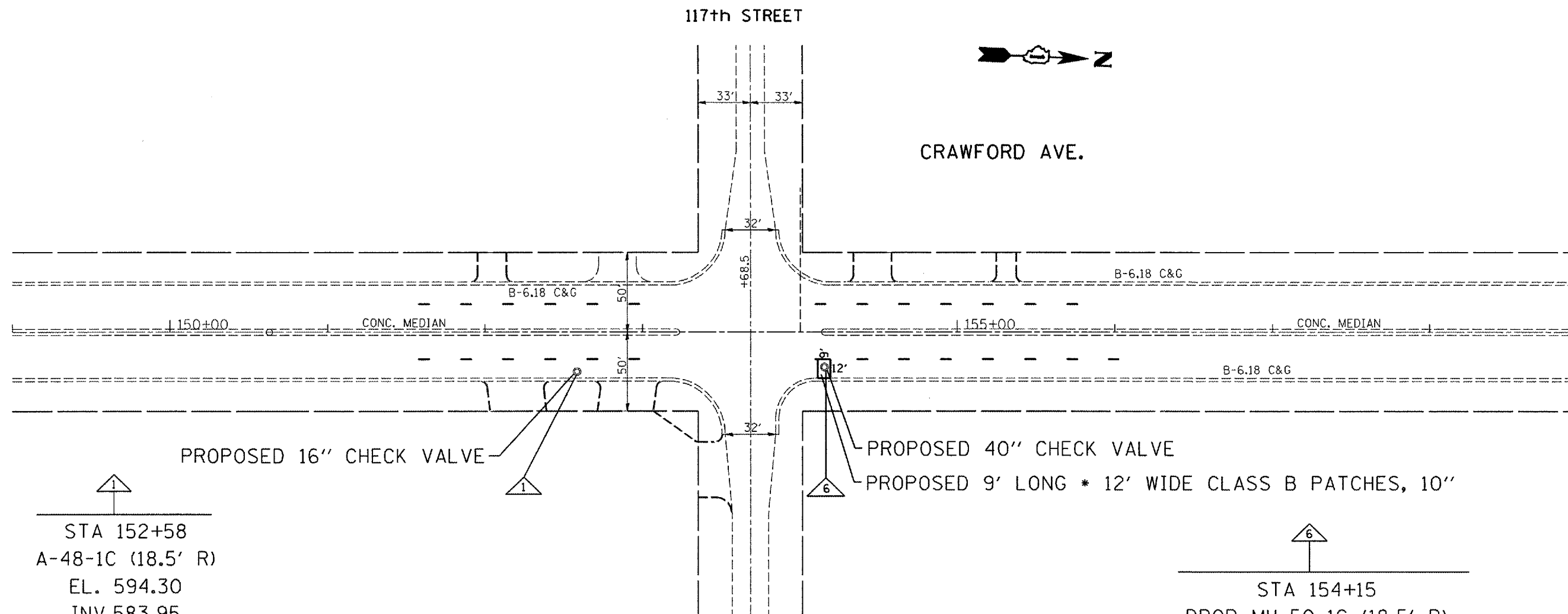
• SPECIALTY ITEM


REVISIONS	
NAME	DATE

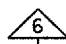
ILLINOIS DEPARTMENT OF TRANSPORTATION  
SUMMARY OF QUANTITIES

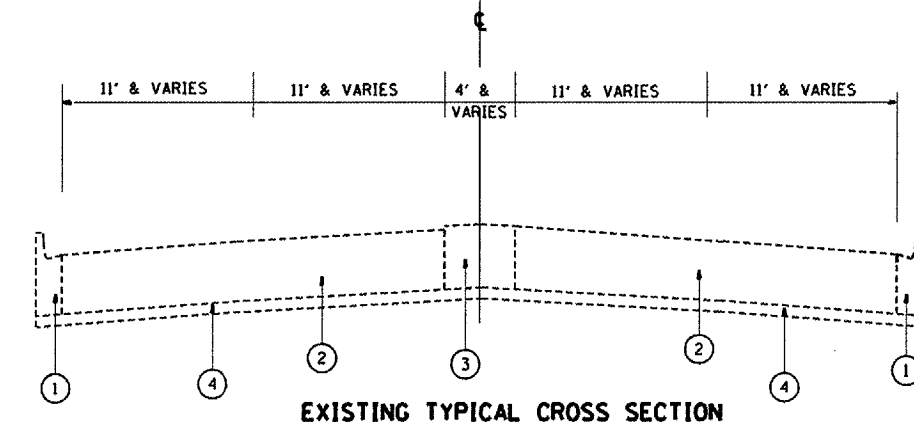
2/28/2006 2:28:06 PM

F.A.I.D. RTE.	SECTION	COUNTY	TOTAL SHEETS	SHEET NO.
3778	2005-0807	COOK	10	4
STA. 188±50		TO STA. 201±00		
FED. ROAD DIST. NO. 1		ILLINOIS	FED. AID PROJECT	



  
 STA 152+58  
 A-48-1C (18.5' R)  
 EL. 594.30  
 INV.583.95

  
 STA 154+15  
 DROP MH-50-1C (18.5' R)  
 EL. 593.75  
 INV.577.1



- LEGEND :**
- ① EXISTING COMB. CONC. CURB & GUTTER, TYPE B-6.12
  - ② EXISTING P.C. CONC. PAVEMENT ± 10"
  - ③ EXISTING CONCRETE MEDIAN, TYPE C-4
  - ④ EXISTING SUB-BASE GRANULAR MATERIAL, TYPE A. (6 IN)

REVISIONS	
NAME	DATE

ILLINOIS DEPARTMENT OF TRANSPORTATION

**PLAN DETAIL & TYPICAL SECTION**

SCALE: VERT. NONE  
 HORIZ. NONE  
 DATE 2/17/2006

DRAWN BY: FG  
 CHECKED BY:

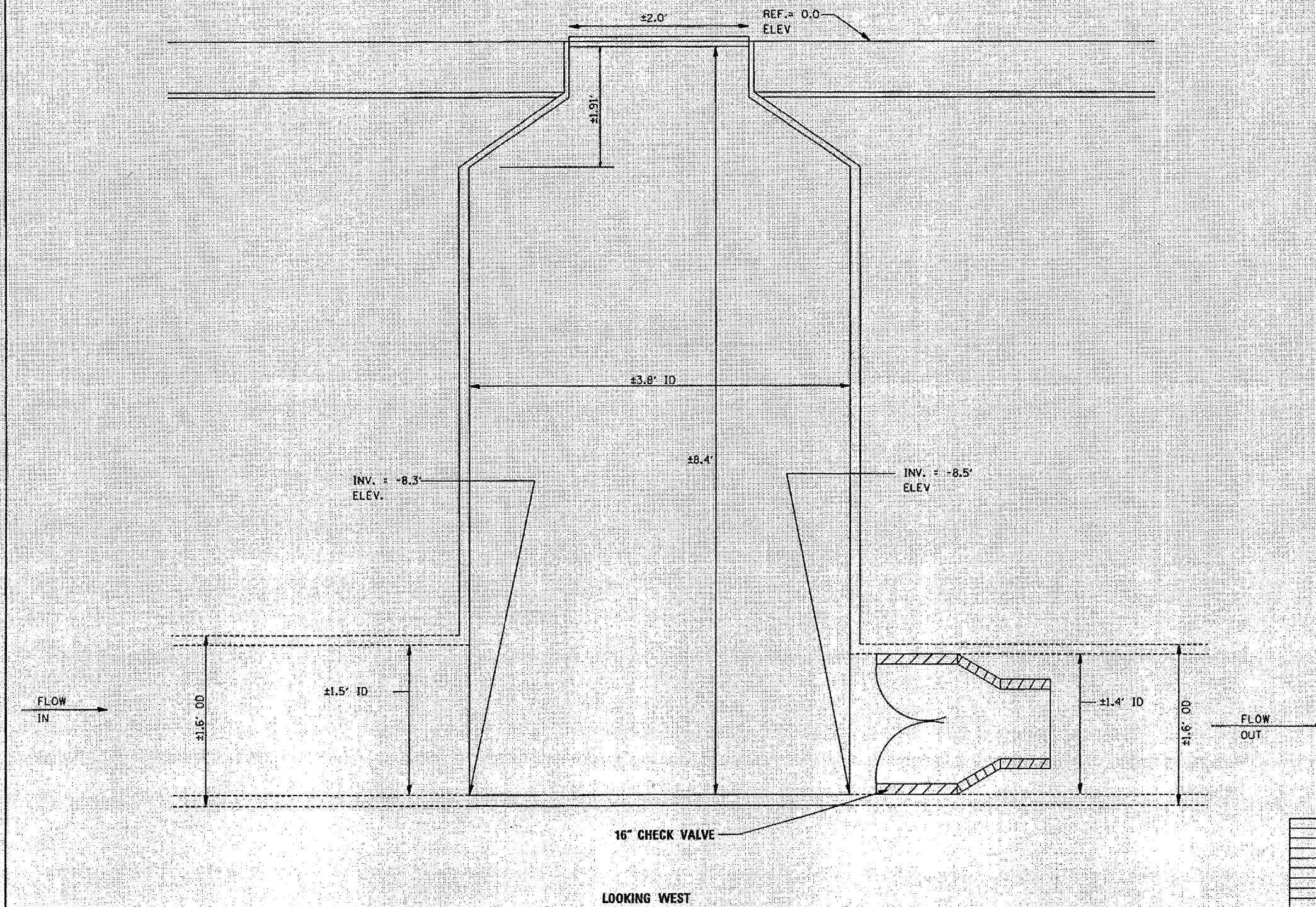
2/17/2006  
 c:\projects\113106\design\_02.dgn  
 qullhauf.p

REF  
REF  
REF

CONTRACT 60A93

P.A.U. RITE	SECTION	COUNTY	TOTAL SHEETS	SHEET NO.
3178	2005-0801	COOK	10	5
STA. 188+50		TO STA. 201+00		
FED. ROAD DIST. NO. 1 ILLINOIS FED. AID PROJECT				

STRUCTURE 1



REVISIONS	
NAME	DATE

ILLINOIS DEPARTMENT OF TRANSPORTATION  
**STRUCTURE 1 DETAIL**  
SCALE: VERT. NONE  
HORIZ. DATE 3/22/2006  
DRAWN BY: FG  
CHECKED BY:

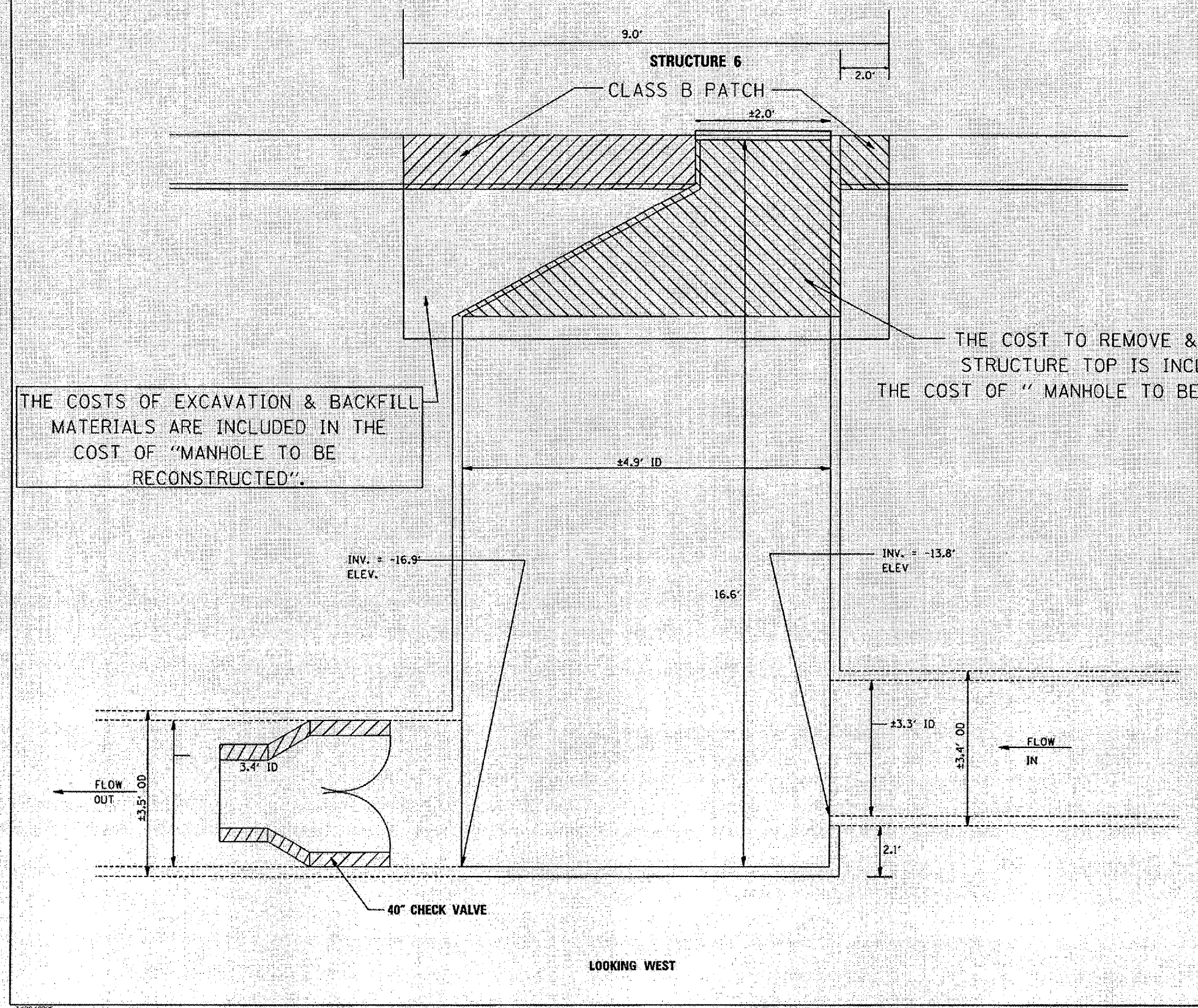
3/22/2006  
c:\projects\0305\design\ca.dwg  
gullhouse.p



CONTRACT 60A93

FULL RTE.	SECTION	COUNTY	TOTAL SHEETS	SHEET NO.
3178	2005-080T	COOK	10	6
STA. 188+50		TO STA. 201+00		
FED. ROAD DIST. NO. 1 ILLINOIS FED. AID PROJECT				

\*REF.  
\*REF.  
\*REF.



THE COSTS OF EXCAVATION & BACKFILL MATERIALS ARE INCLUDED IN THE COST OF "MANHOLE TO BE RECONSTRUCTED".

THE COST TO REMOVE & REPLACE STRUCTURE TOP IS INCLUDED IN THE COST OF "MANHOLE TO BE RECONSTRUCTED".

LOOKING WEST

REVISIONS	
NAME	DATE

ILLINOIS DEPARTMENT OF TRANSPORTATION

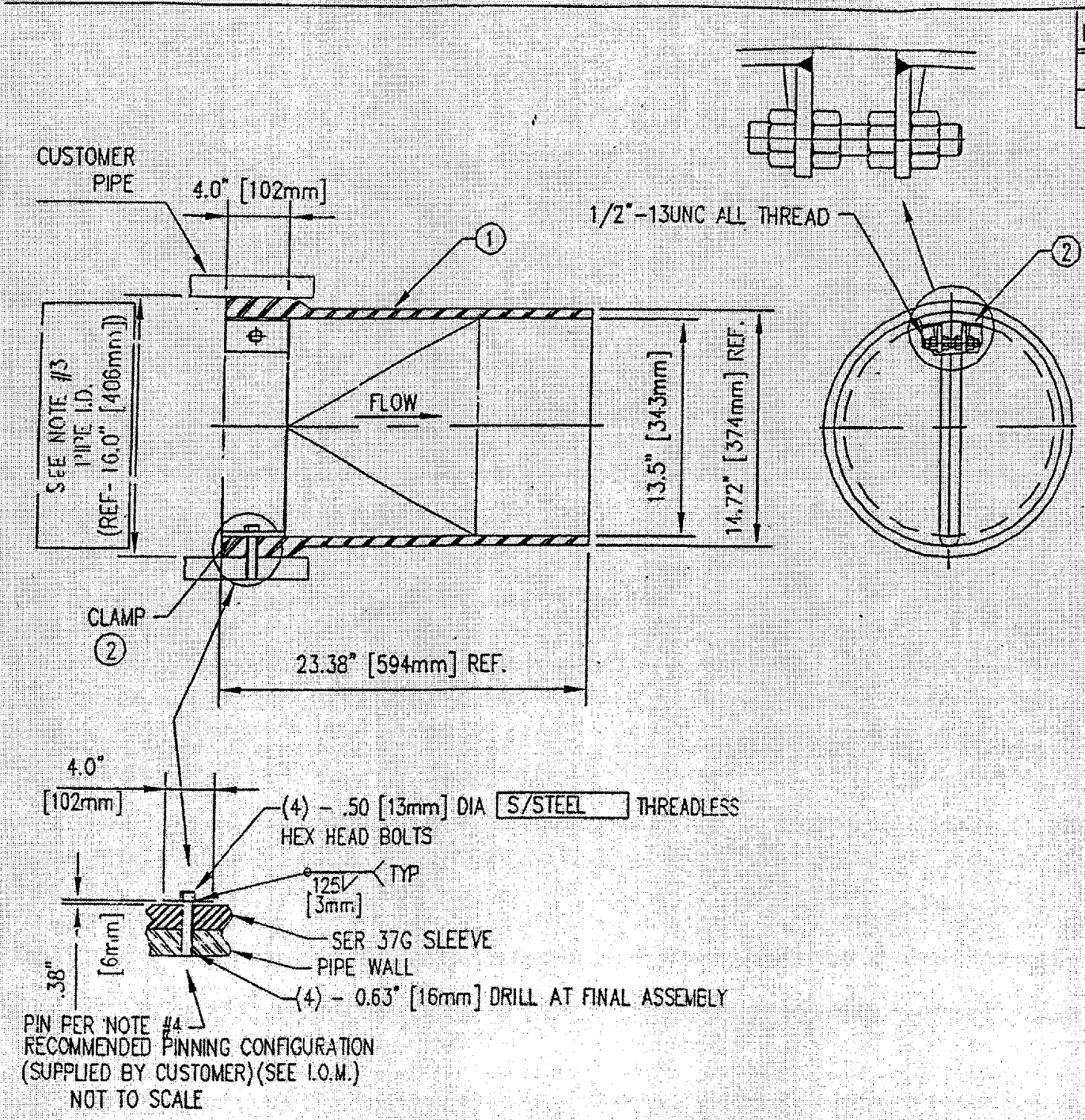
**STRUCTURE 6 DETAIL**

SCALE: VERT. NONE  
HORIZ. DATE 3/22/2006

DRAWN BY: FG  
CHECKED BY:

3/22/2006  
c:\p\j\c\10306\design\as2\gn  
gulliver.dwg





ITEM	QTY.	DESCRIPTION	MAT'L
1	1	CHECK VALVE SLEEVE	MUST BE SUPPLIED
2	1	MOUNTING CLAMP	MUST BE SUPPLIED

- NOTES:**
1. VALVE SHALL HAVE TWO TO THREE INCHES OF CRACKING PRESSURE
  2. VALVE IS TO BE INSTALLED WITH THE OUTLET VERTICAL
  3. PIPE INSIDE DIAMETER **MUST BE SUPPLIED**
  4. IT IS RECOMMENDED TO BOLT OR PIN TO PIPE AS SHOWN, 4 PLACES 90° APART

REVISIONS		ILLINOIS DEPARTMENT OF TRANSPORTATION
NAME	DATE	
		16" SERIES 37G CHECK VALVE DETAIL

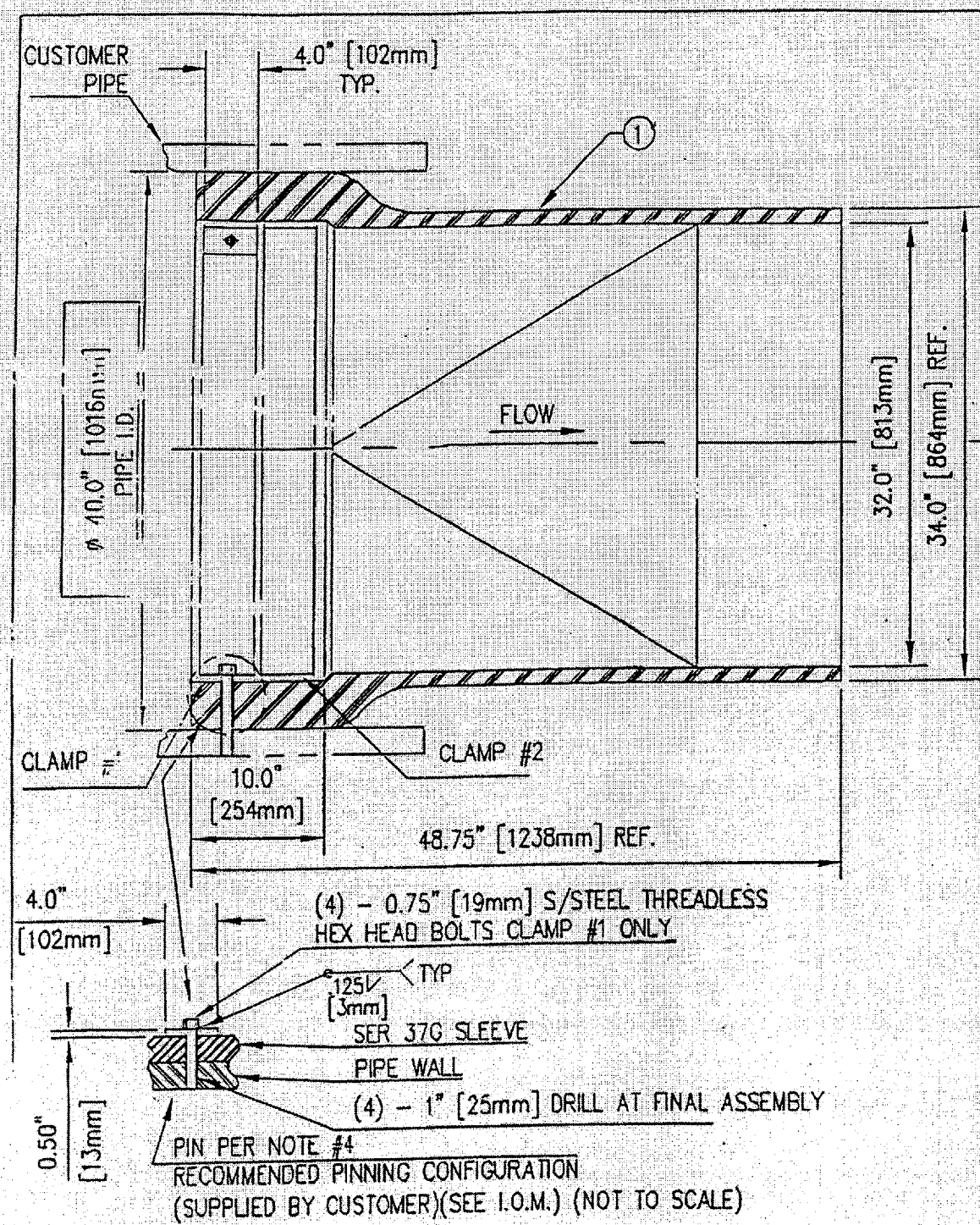
SCALE: VERT. NONE  
DATE 12/13/2005

DRAWN BY: FG  
CHECKED BY:

12/13/2005  
d:\proj\163106\check\_valve.dwg  
guffin\mcp

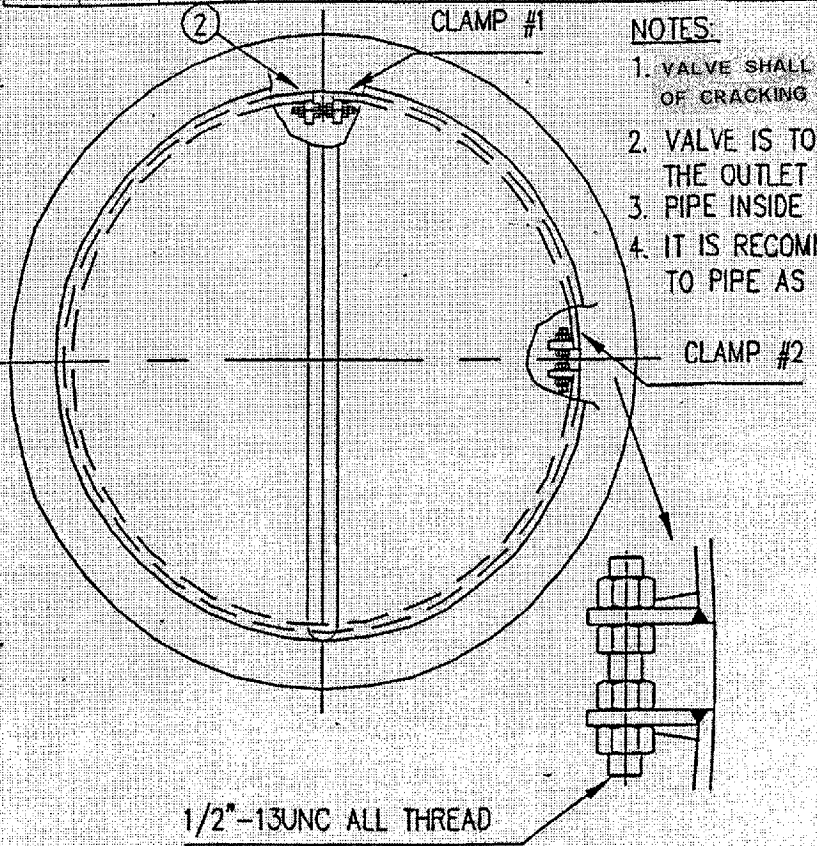


PLAN SHEET	SECTION	COUNTY	TOTAL SHEETS	SHEET NO.
317B	2005-0807	COOK	8	8
STA. 18+50		TO STA. 20+00		
FED. ROAD DIST. NO. 1 ILLINOIS FED. AID PROJECT				



ITEM	QTY.	DESCRIPTION	MAT'L
1	1	CHECK VALVE SLEEVE	MUST BE SUPPLIED
2	2	MOUNTING CLAMP	MUST BE SUPPLIED

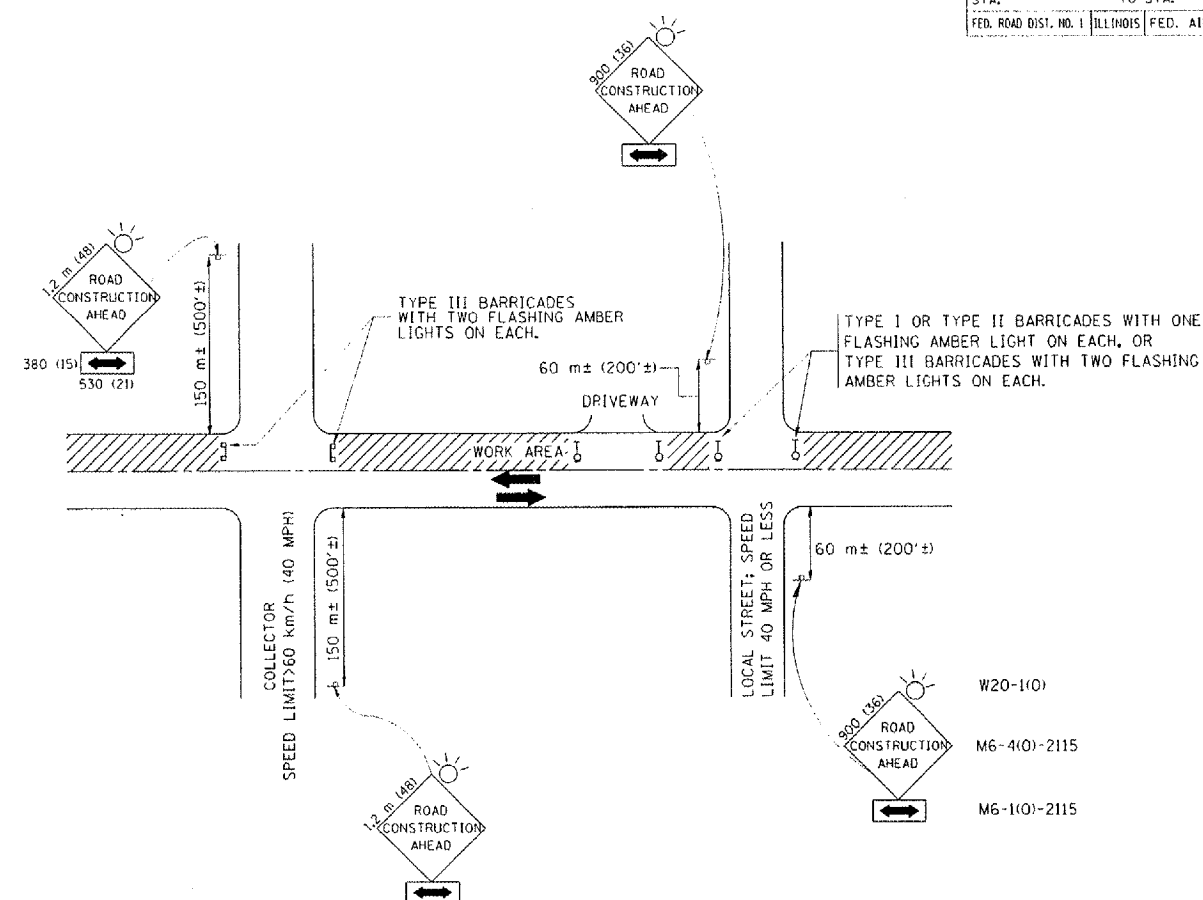
- NOTES:
1. VALVE SHALL HAVE TWO TO THREE INCHES OF CRACKING PRESSURE
  2. VALVE IS TO BE INSTALLED WITH THE OUTLET VERTICAL
  3. PIPE INSIDE DIAMETER MUST BE SUPPLIED
  4. IT IS RECOMMENDED TO BOLT OR PIN TO PIPE AS SHOWN, 4 PLACES 90° APART



REVISIONS		ILLINOIS DEPARTMENT OF TRANSPORTATION	
NAME	DATE		
		40" SERIES 37G CHECK VALVE DETAIL	
		SCALE: VERT. NONE	DRAWN BY: FE
		DATE: 12/13/2005	CHECKED BY:

12/13/2005  
 c:\work\pds\dr\3106\design\ac\p  
 gull\acem\p





### TRAFFIC CONTROL AND PROTECTION FOR SIDE ROADS, INTERSECTIONS, AND DRIVEWAYS

#### NOTES:

##### A. FOR NO LANE RESTRICTION ON THE SIDE ROAD OR DRIVEWAYS

1. SIDE ROAD WITH A SPEED LIMIT OF 60 km/h (40 MPH) OR LESS AS SHOWN ON THE DRAWING AND AS DIRECTED BY THE ENGINEER:

a) ONE **ROAD CONSTRUCTION AHEAD** SIGN 900x900 (36x36) WITH A FLASHER AND FLAG MOUNTED ON IT APPROXIMATELY 60 m (200') IN ADVANCE OF THE MAIN ROUTE.

b) THE CLOSED PORTION OF THE MAIN ROUTE SHALL BE PROTECTED BY BLOCKING WITH TYPE I, TYPE II OR TYPE III BARRICADES, 1/3 OF THE CROSS SECTION OF THE CLOSED PORTION.

2. SIDE ROAD WITH A SPEED LIMIT GREATER THAN 60 km/h (40 MPH) AS SHOWN ON THE DRAWING AND AS DIRECTED BY THE ENGINEER:

a) ONE **ROAD CONSTRUCTION AHEAD** SIGN 1.2 m x 1.2 m (48x48) WITH A FLASHER MOUNTED ON IT APPROXIMATELY 150 m (500') IN ADVANCE OF THE MAIN ROUTE.

b) THE CLOSED PORTION OF THE MAIN ROUTE SHALL BE PROTECTED BY BLOCKING WITH TYPE III BARRICADES, 1/2 OF THE CROSS SECTION OF THE CLOSED PORTION.

3. WHEN THE SIDE ROAD LIES BETWEEN THE BEGINNING OF THE MAINLINE SIGNING AND THE WORK ZONE, A SINGLE HEADED ARROW (M6-1) SHALL BE USED IN LIEU OF THE DOUBLE HEADED ARROW (M6-4).

##### B. FOR A LANE CLOSURE ON A SIDE ROAD OR DRIVEWAY:

USE APPLICABLE PORTIONS OF THE TYPICAL APPLICATION OF TRAFFIC CONTROL DEVICES (STD. 701501, STD. 701606 OR THE APPROPRIATE STANDARD). THE SPACING OF SIGNS AND BARRICADES SHALL BE ADJUSTED FOR FIELD CONDITIONS AS DIRECTED BY THE ENGINEER. THE DIRECTIONAL ARROW SHALL BE COVERED OR REMOVED WHEN NO LONGER CONSISTENT WITH THE SIDE ROAD LANE CLOSURE.

C. ADVANCE WARNING SIGNS ARE TO BE OMITTED ON DRIVEWAY UNLESS OTHERWISE NOTED.

D. THE TRAFFIC CONTROL AND PROTECTION FOR SIDE ROADS, INTERSECTIONS, AND DRIVEWAYS SHALL BE INCIDENTAL TO THE COST OF SPECIFIED TRAFFIC CONTROL STANDARDS OR ITEMS.

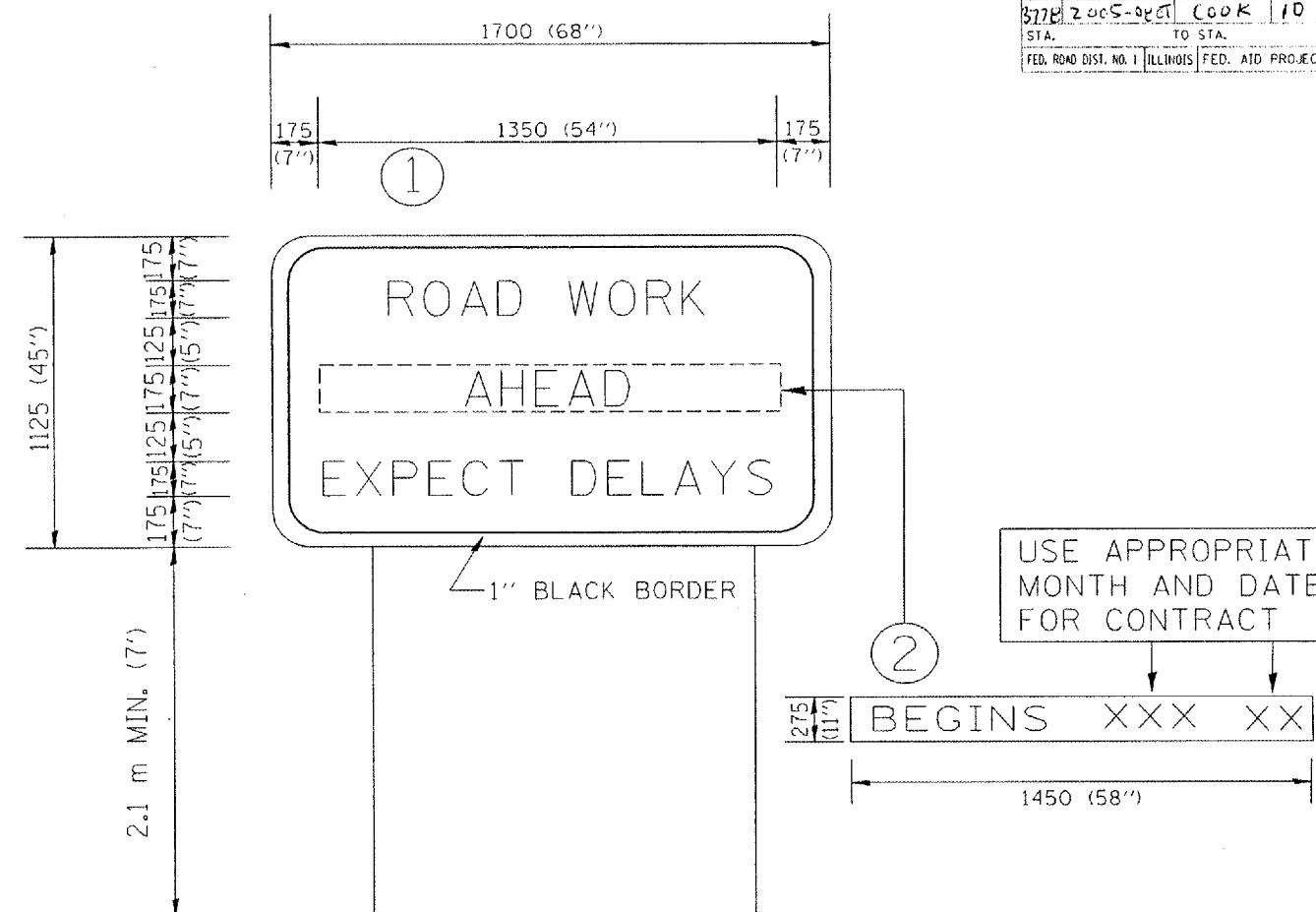
REVISIONS	
NAME	DATE
LHA	6/89
T. RAMMACHER	09/08/94
J. OBERLE	10/18/95
A. HOUSEH	03/06/96
A. HOUSEH	10/15/96
T. RAMMACHER	01/06/00

ILLINOIS DEPARTMENT OF TRANSPORTATION  
**TRAFFIC CONTROL AND PROTECTION FOR SIDE ROADS, INTERSECTIONS, AND DRIVEWAYS**

SCALE: VERT.  
 HORIZ.  
 DATE 10/18/2002

DRAWN BY  
 CHECKED BY  
 TC-10

F.A.D. RTE.	SECTION	COUNTY	TOTAL SHEETS	SHEET NO.
377B	2005-0401	COOK	10	10
STA.		TO STA.		
FED. ROAD DIST. NO. 1		ILLINOIS	FED. AID PROJECT	



NOTES:

1. USE BLACK LETTERING ON ORANGE BACKGROUND.
2. ERECT SIGNS IN ADVANCE OF THE LOCATION FOR THE "ROAD CONSTRUCTION AHEAD" SIGN AT LOCATIONS AS DIRECTED BY THE ENGINEER.
3. ERECT SIGN ① WITH INSTALLED PANEL ② ONE WEEK PRIOR TO THE START OF CONSTRUCTION.
4. REMOVE PANEL ② SOON AFTER THE START OF CONSTRUCTION.
5. SEE SPECIAL PROVISION FOR "TEMPORARY INFORMATION SIGNING" FOR ADDITIONAL INFORMATION.
6. ONE SIGN ASSEMBLY EQUALS 2.3 SQ. M. (25.70 SQ. FT.)

ALL DIMENSIONS ARE IN MILLIMETERS (INCHES) UNLESS OTHERWISE SHOWN.

REVISIONS	
NAME	DATE
R. MIRS	9-15-97
R. MIRS	12-11-97
T. RAMMACHER	2-2-99

ILLINOIS DEPARTMENT OF TRANSPORTATION  
TEMPORARY INFORMATION SIGNING

SCALE: DATE 10/18/2002  
DRAWN BY: BUR. OF DESIGN  
CHECKED BY: