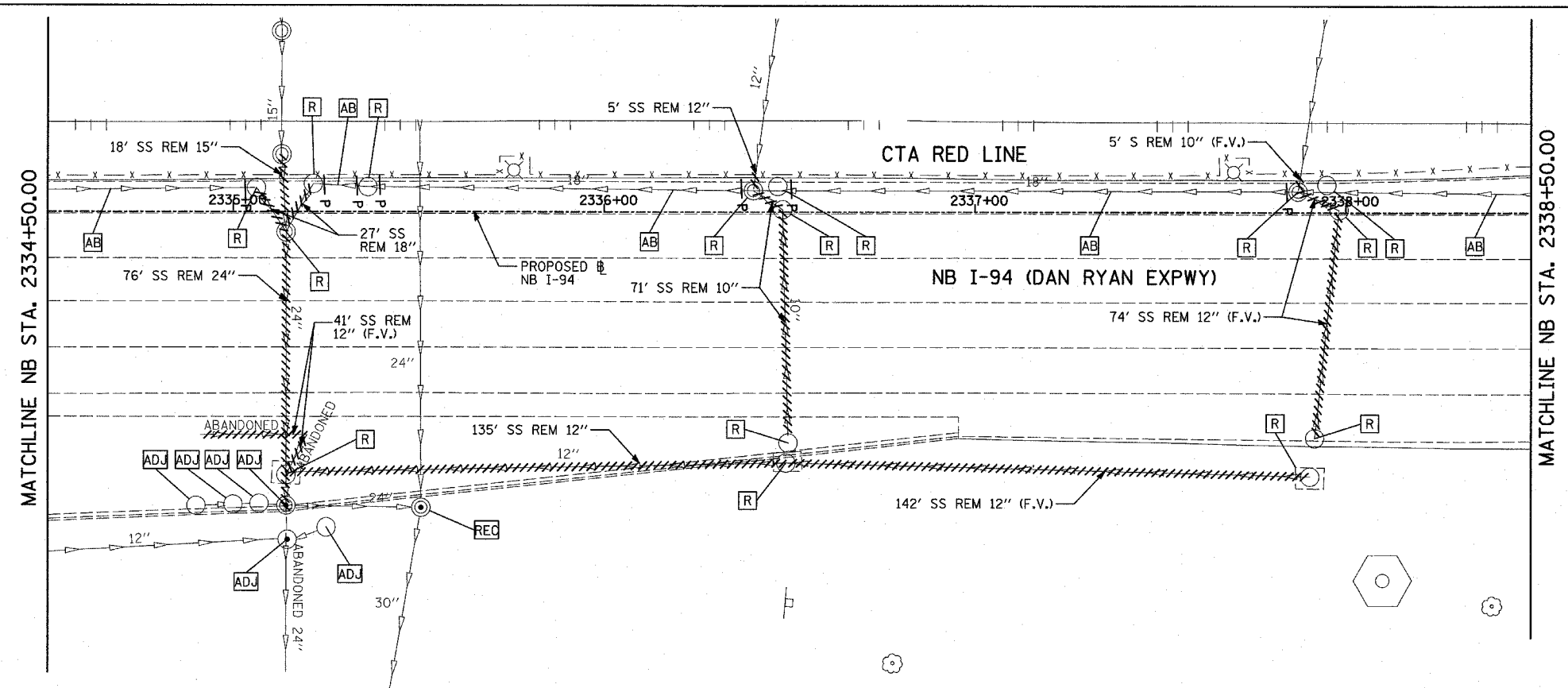
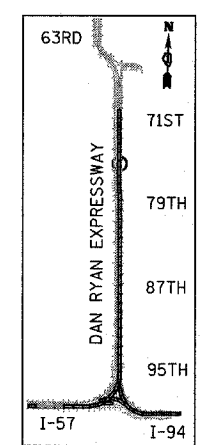
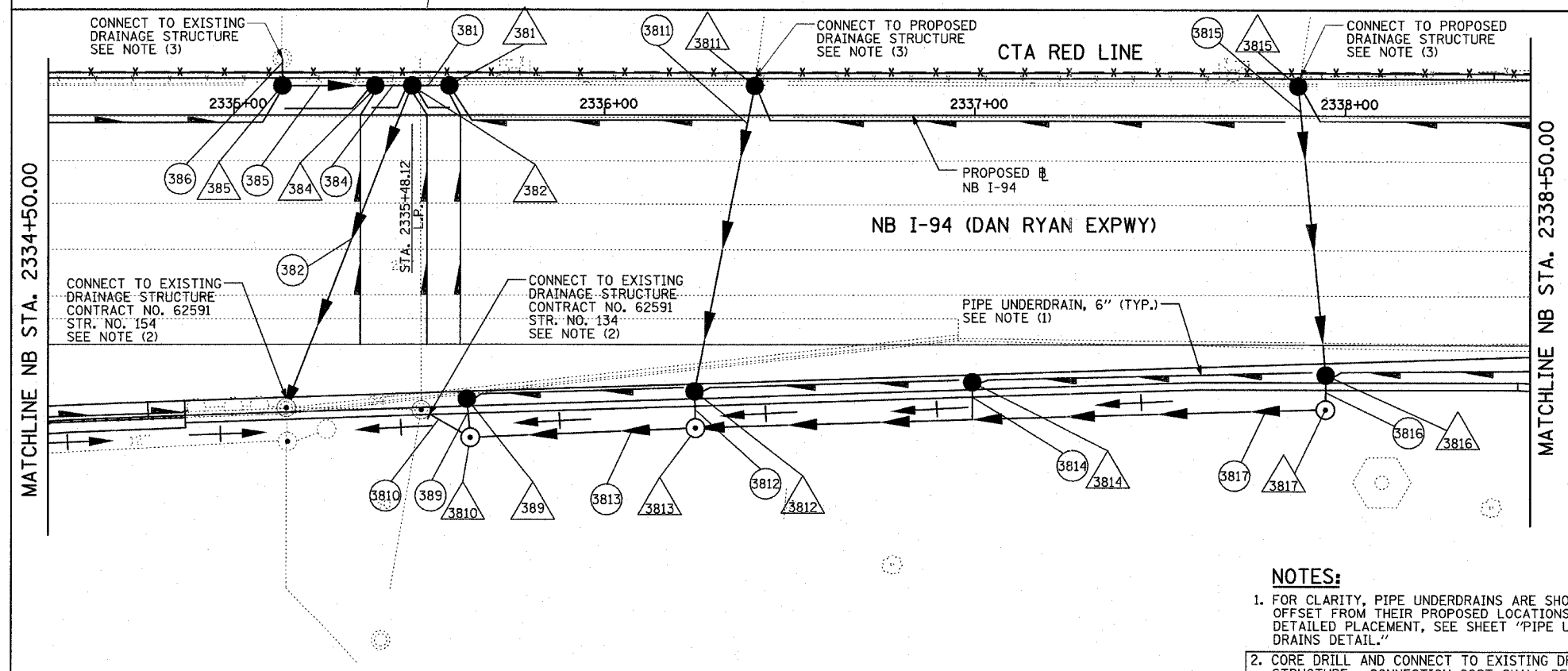


| | | | | |
|---------------------|----------|------------------|--------------|-----------|
| F.A.I. RTE. | SECTION | COUNTY | TOTAL SHEETS | SHEET NO. |
| 94 | 1818 R-3 | COOK | 265 | 112 |
| STA. 2316+00 | | TO STA. 2367+00 | | |
| FED. ROAD DIST. NO. | ILLINOIS | FED. AID PROJECT | | |

60B17



EXISTING CONDITIONS
PROPOSED IMPROVEMENTS

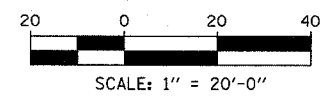


LOCATION MAP

- NOTES:**
- FOR CLARITY, PIPE UNDERDRAINS ARE SHOWN OFFSET FROM THEIR PROPOSED LOCATIONS. FOR DETAILED PLACEMENT, SEE SHEET "PIPE UNDERDRAINS DETAIL."
 - CORE DRILL AND CONNECT TO EXISTING DRAINAGE STRUCTURE. CONNECTION COST SHALL BE INCLUDED IN THE COST TO CONSTRUCT THE STORM SEWER.
 - ALL CONNECTIONS TO EXISTING SEWER OR STRUCTURE ALONG CTA SHALL BE FIELD VERIFIED PRIOR TO INSTALLATION AND COORDINATED WITH CTA CONSTRUCTION. COST SHALL BE INCLUDED IN THE COST TO CONSTRUCT THE DRAINAGE STRUCTURE.

LEGEND:

| | | | |
|---------|--|------|-----------------|
| —X—X—X— | EXISTING COMBINED SEWER | —P— | SEWER PLUG |
| (XY) | PROPOSED STORM SEWER NUMBER (X=SHEET NO., Y=PIPE NO.) | F.V. | FIELD VERIFY |
| (XY) | PROPOSED STRUCTURE NUMBER (X=SHEET NO., Y=STRUCTURE NO.) | //// | UTILITY REMOVAL |
| S | PIPE STUBOUT TO BE PLUGGED | | |



| REVISIONS | |
|-----------|------|
| NAME | DATE |
| | |
| | |
| | |
| | |
| | |
| | |
| | |
| | |
| | |
| | |

ILLINOIS DEPARTMENT OF TRANSPORTATION
F.A.I. 94 (DAN RYAN EXPRESSWAY)
DRAINAGE AND UTILITY PLAN
NB I-94 (DAN RYAN EXPRESSWAY)
NB I-94 STA. 2334+50.00 TO 2338+50.00

SCALE: 1"=20'
DATE: MARCH 7, 2006

DRAWN BY: JPA
CHECKED BY: MPG

TYLIN INTERNATIONAL