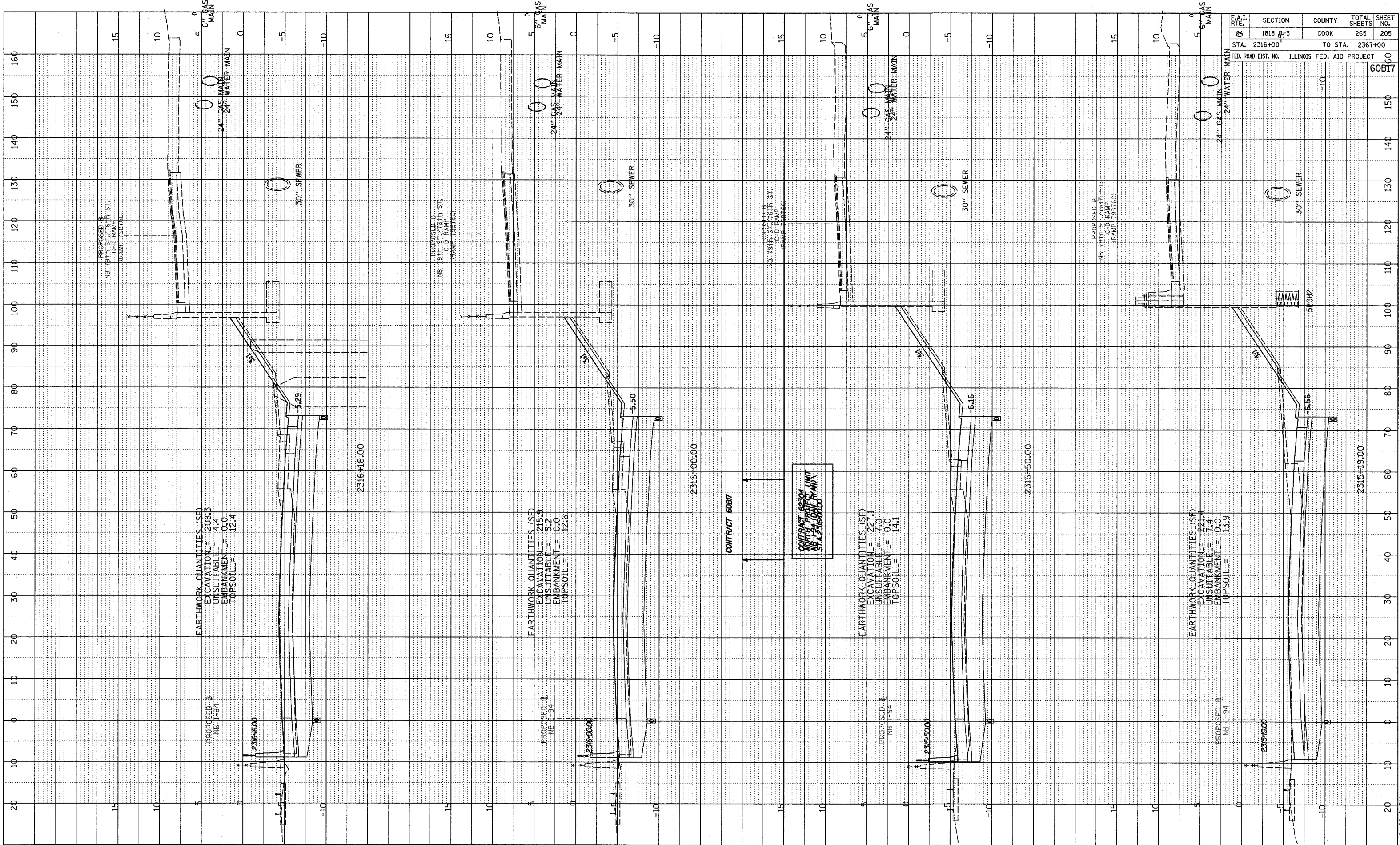
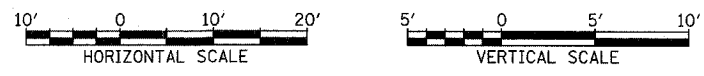


PROFILE SUBMITTED _____ DATE _____
 PLOTTED _____
 GRADES CHECKED _____
 STRUCTURE NOTATIONS OK'D _____
 NO. _____



F.A.I. RTE.	SECTION	COUNTY	TOTAL SHEETS	SHEET NO.
84	1818 B-3	COOK	265	205
STA. 2316+00			TO STA. 2367+00	
FED. ROAD DIST. NO.	ILLINOIS	FED. AID PROJECT		60BI7

TYLIN INTERNATIONAL



NORTHBOUND I-94 (DAN RYAN EXPWY)
 STA. 2316+00 TO STA. 2317+00

03/03/2006 04:09:19 PM P:\023731\road\2006\pk200\iss\975.dgn