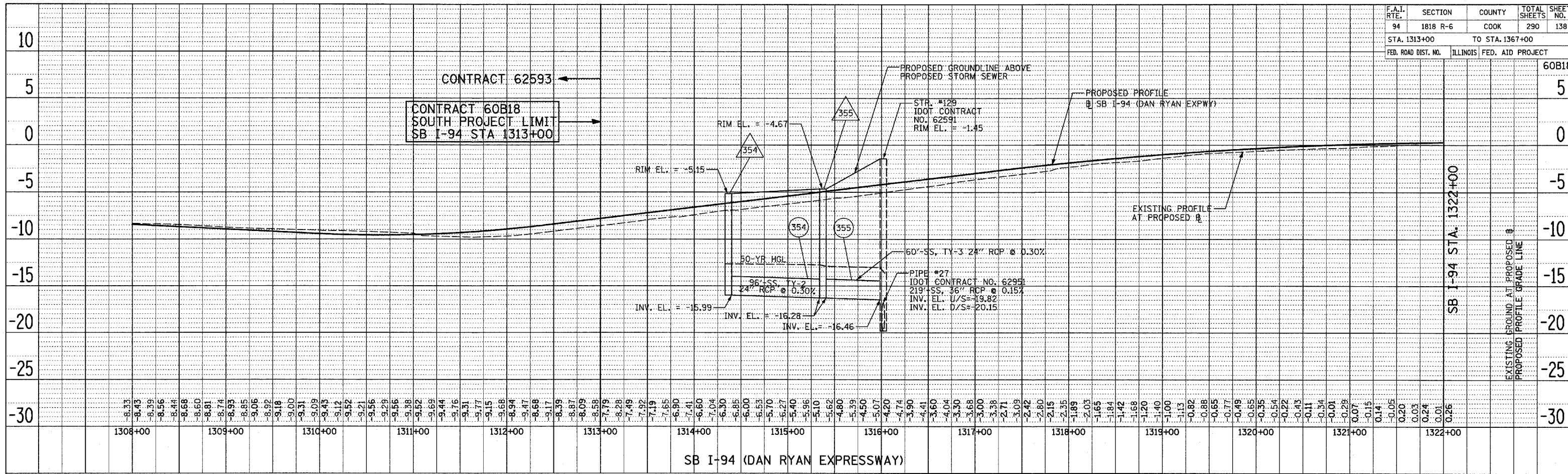
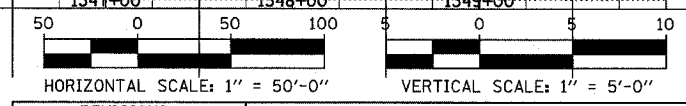
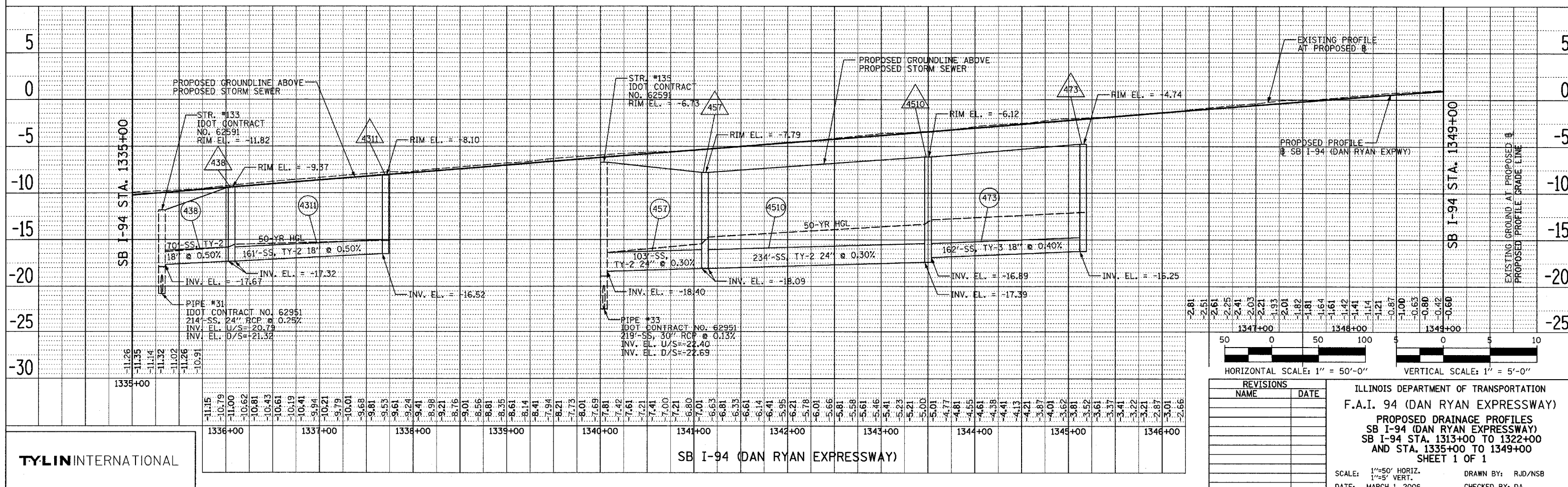


DATE: \_\_\_\_\_  
 BY: \_\_\_\_\_  
 CHECKED: \_\_\_\_\_  
 ALIGNED: \_\_\_\_\_  
 PLOTTED: \_\_\_\_\_  
 PLAN NO.: \_\_\_\_\_



DATE: \_\_\_\_\_  
 BY: \_\_\_\_\_  
 CHECKED: \_\_\_\_\_  
 ALIGNED: \_\_\_\_\_  
 PLOTTED: \_\_\_\_\_  
 PLAN NO.: \_\_\_\_\_



REVISIONS	
NAME	DATE

ILLINOIS DEPARTMENT OF TRANSPORTATION  
 F.A.I. 94 (DAN RYAN EXPRESSWAY)  
 PROPOSED DRAINAGE PROFILES  
 SB I-94 (DAN RYAN EXPRESSWAY)  
 SB I-94 STA. 1313+00 TO 1322+00  
 AND STA. 1335+00 TO 1349+00  
 SHEET 1 OF 1

SCALE: 1"=50' HORIZ.  
 1"=5' VERT.      DRAWN BY: RJD/NSB  
 DATE: MARCH 1, 2006      CHECKED BY: DA

**TYLIN** INTERNATIONAL