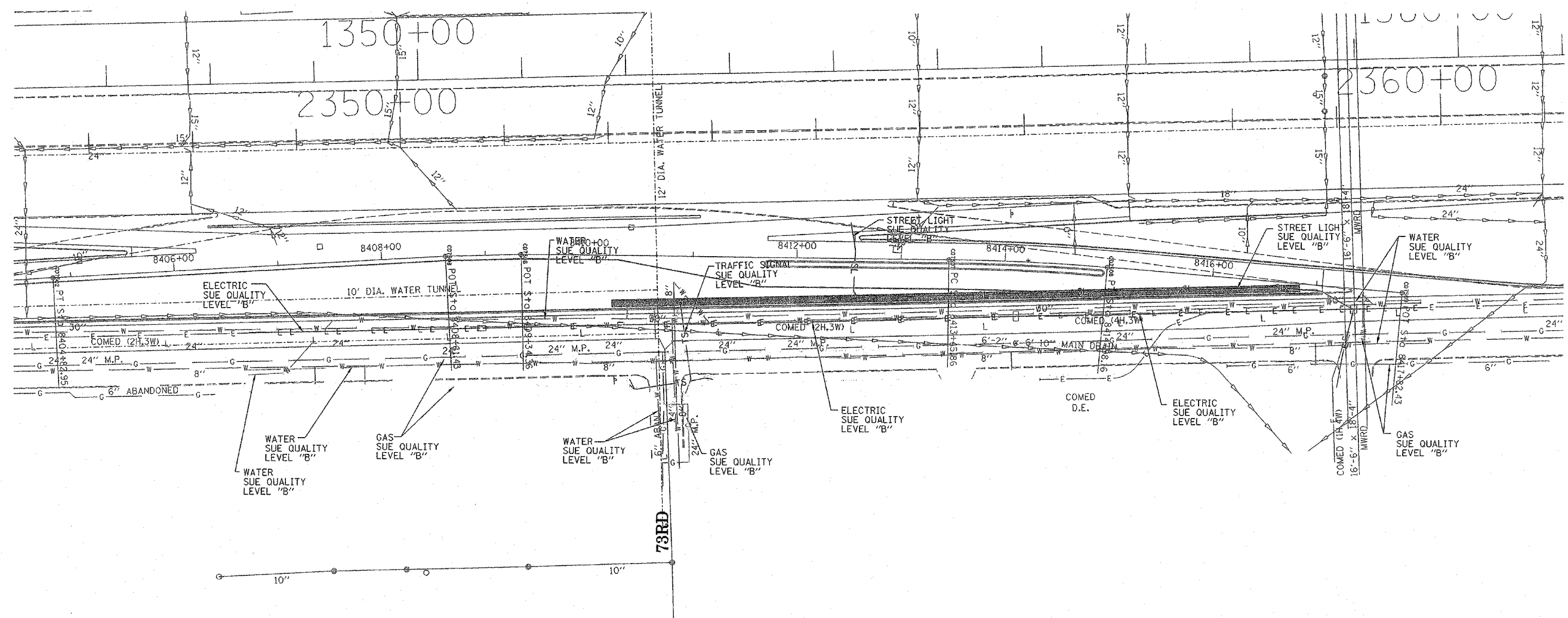
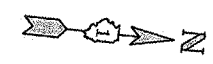


|                     |                    |                  |              |           |
|---------------------|--------------------|------------------|--------------|-----------|
| F.A. RTE.           | SECTION            | COUNTY           | TOTAL SHEETS | SHEET NO. |
|                     | 0516.1177 & 1818-6 | Cook             | 290          | 150       |
| STA.                | TO STA.            |                  |              |           |
| FED. ROAD DIST. NO. | ILLINOIS           | FED. AID PROJECT |              |           |



TBE could not locate buried utilities directly beneath the expressway due to traffic and safety issues.




**TBE GROUP, INC.**  
 CIVIL ENGINEERING \* TRANSPORTATION \* ENVIRONMENTAL  
 \* PLANNING \* UTILITY ENGINEERING/LOCATING  
 SOUTHERN REGION: FL, GA, SC, NC  
 NORTHERN REGION: IL, IN, MI, OH, MD, NJ, NY  
 PA, VA, CANADA  
 WESTERN REGION: AZ, NV, NM, TX, CA, OR, UT, WA

IL09500164, 167, 168, 170, 171, 179, 180, 182, 204,  
 205, 206, 211, 212, 219, 221, 225, 226, 227, 228, 230, 232  
 TBE SUE PAGE NO: 16 of 36  
 Checked by: *[Signature]*  
 SUE Quality Level "A" : Test Holes  
 SUE Quality Level "B" : Designating

|        |        |                          |
|--------|--------|--------------------------|
| —TS—   | —TS—   | TRAFFIC SIGNAL           |
| —SL—   | —SL—   | STREET LIGHT             |
| —COCE— | —COCE— | CITY OF CHICAGO ELECTRIC |
| —T—    | —T—    | TELEPHONE                |
| —W—    | —W—    | WATER                    |
|        |        | GAS                      |
| —CTV—  | —CTV—  | CABLE TELEVISION         |
| —FO—   | —FO—   | FIBER OPTIC              |
| —E—    | —E—    | ELECTRIC                 |
| ⊙      | ⊙      | TEST HOLE                |

Utilities shown on these plans as depicted in the legend have been investigated by TBE Group, Inc in accordance with SUE Industry Standards. All other information shown has been provided to TBE Group, Inc by others.

  
 205 W. WACKER DRIVE  
 SUITE 1020  
 CHICAGO, IL 60606  
 (312) 704-1970

| REVISIONS |      |
|-----------|------|
| NAME      | DATE |
|           |      |
|           |      |
|           |      |
|           |      |
|           |      |
|           |      |
|           |      |
|           |      |
|           |      |
|           |      |

ILLINOIS DEPARTMENT OF TRANSPORTATION  
 SUE Investigation of Underground Utilities  
 I-94 NB & SB of Dan Ryan Expressway  
 From I-57 to 43rd Street  
 Contract No: 62586, 62589, 62590, 62594, 62693  
 SQL "B" DATE : 7/22/04  
 DRAWN BY : KLC  
 SCALE : 1" = 50'