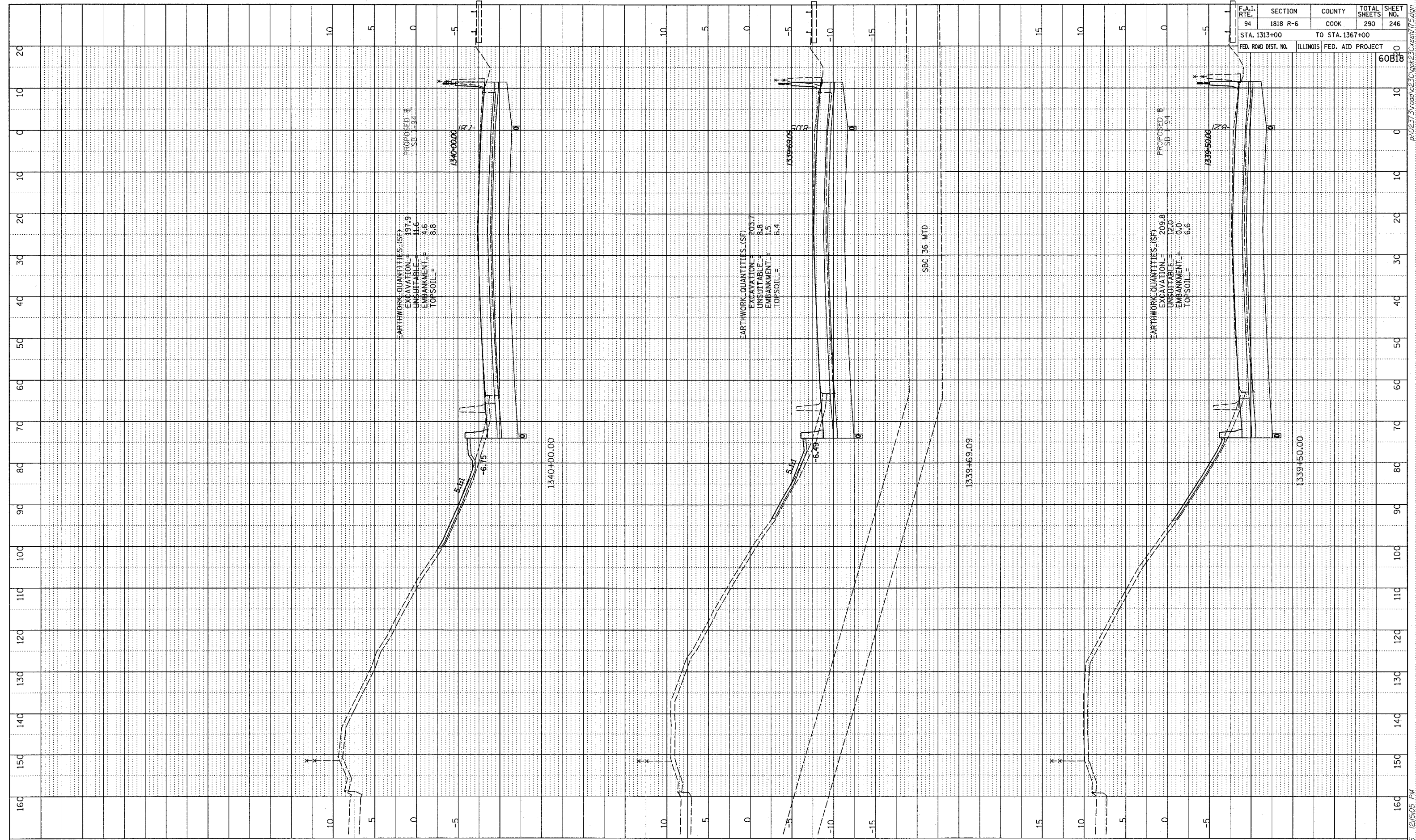


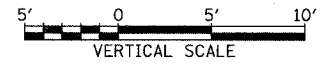
PROFILE
 SURVEYED
 PLOTTED
 CHECKED
 DATE
 NO.
 STRUCTURE NOTATION
 NO.

F.A.I. RTE.	SECTION	COUNTY	TOTAL SHEETS	SHEET NO.
94	1818 R-6	COOK	290	246
STA. 1313+00		TO STA. 1367+00		
FED. ROAD DIST. NO.		ILLINOIS FED. AID PROJECT		

60818



TYLIN INTERNATIONAL



I-94 SOUTHBOUND (DAN RYAN EXPWY)
 STA. 1339+50 TO STA. 1340+00

02/27/2006 12:50:05 PM