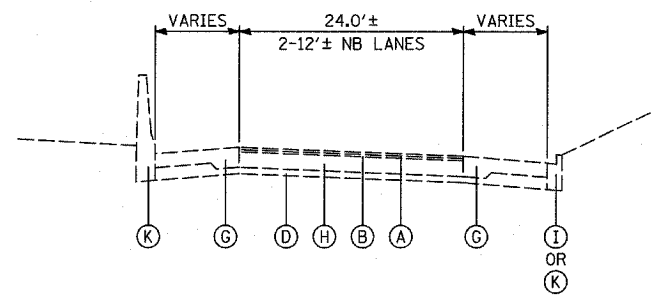
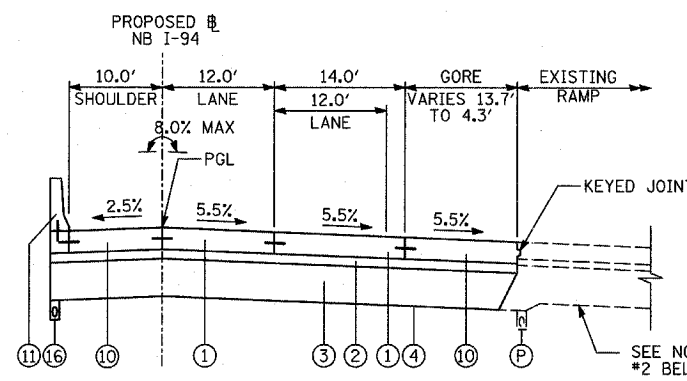


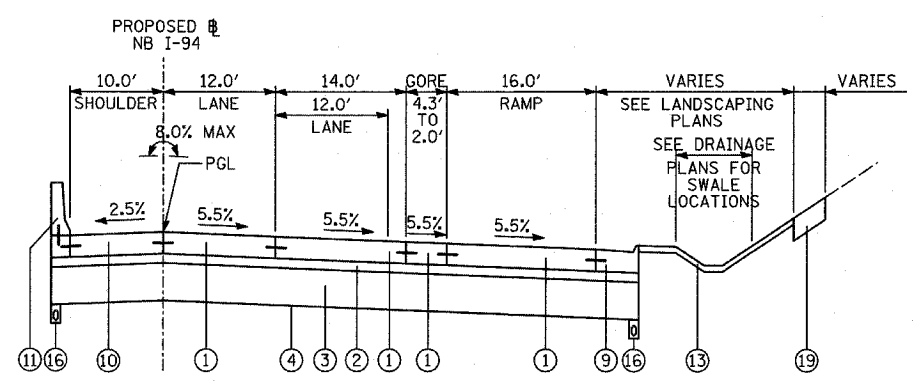
F.A.I. RTE.	SECTION	COUNTY	TOTAL SHEETS	SHEET NO.
94		COOK	916	20
STA. 190+45 (NB I-57) TO STA. 2316+00 (NB RYAN)				
FED. ROAD DIST. NO. ILLINOIS FED. AID PROJECT				
* (1516.1, 1717, & 1818) R-4 62304				



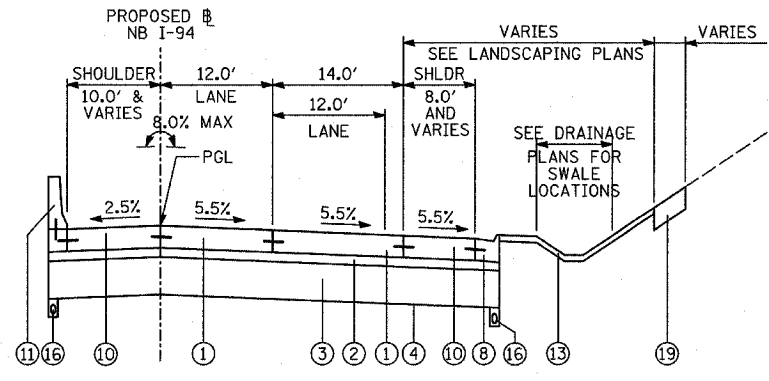
EXISTING NB I-94 (FORD) MAINLINE PAVEMENT BETWEEN WB CONNECTOR SPLIT AND MERGE



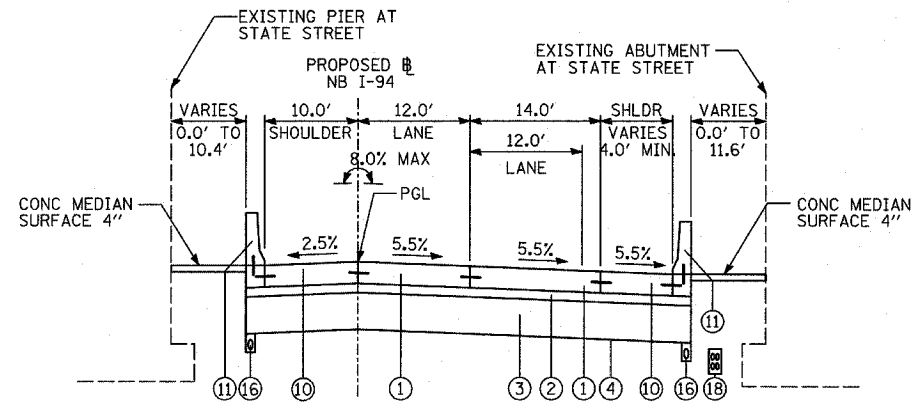
PROPOSED NB I-94 (FORD) MAINLINE PAVEMENT AT MICHIGAN AVE ENTRANCE RAMP GORE



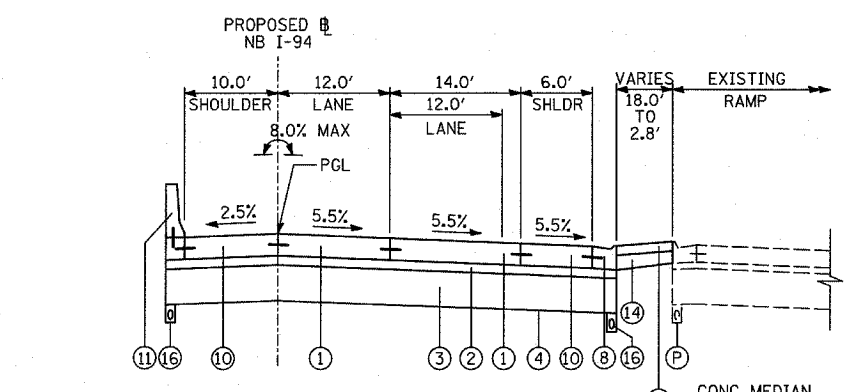
PROPOSED NB I-94 (FORD) MAINLINE PAVEMENT AT MICHIGAN AVE ENTRANCE RAMP TERMINAL



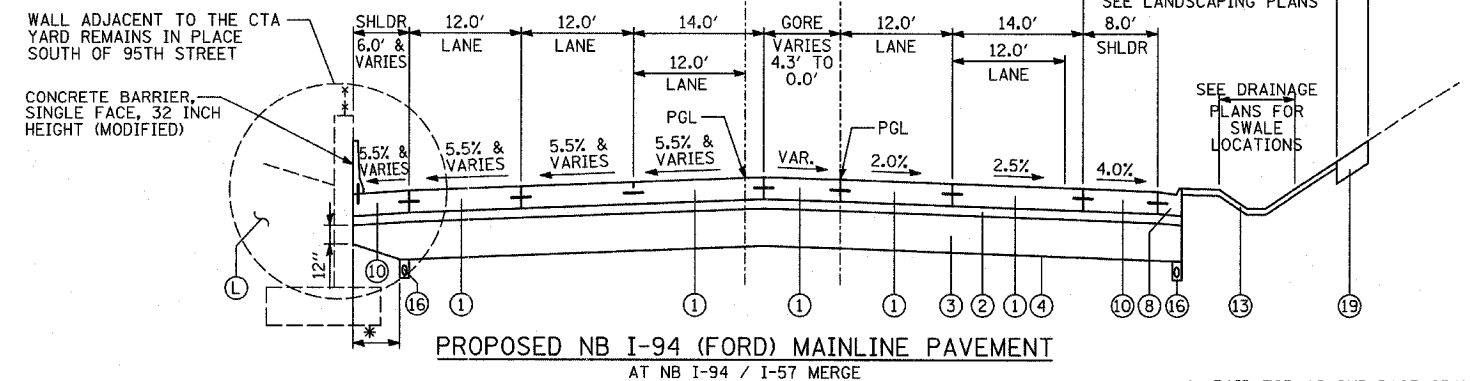
PROPOSED NB I-94 (FORD) MAINLINE PAVEMENT SOUTH OF NB MICHIGAN AVE ENTRANCE RAMP (SEE ALTERNATE EDGE TREATMENT DETAILS)



PROPOSED NB I-94 (FORD) MAINLINE PAVEMENT SOUTH OF NB MICHIGAN AVE ENTRANCE RAMP (SEE ALTERNATE EDGE TREATMENT DETAILS)



PROPOSED NB I-94 MAINLINE PAVEMENT AT MICHIGAN AVE ENTRANCE RAMP GORE



PROPOSED NB I-94 (FORD) MAINLINE PAVEMENT AT NB I-94 / I-57 MERGE

- NOTES:**
- REFER TO PAVEMENT JOINTING AND ELEVATION PLANS FOR DESCRIPTIONS AND DETAILS OF PAVEMENT JOINTS.
 - ANY REQUIRED REGRADING OF EXISTING ADJACENT SUB-BASE GRANULAR MATERIAL SHALL BE INCLUDED IN THE COST OF "SUB-BASE GRANULAR MATERIAL, TYPE B 24"

- PROPOSED LEGEND**
- CONTINUOUSLY REINFORCED PORTLAND CEMENT CONCRETE PAVEMENT 14"; & PAVEMENT REINFORCEMENT, 14"
 - STABILIZED SUB-BASE, 6" (BITUMINOUS AGGREGATE MIXTURE)
 - SUB-BASE GRANULAR MATERIAL, TYPE B 24"
 - GEOTECHNICAL FABRIC FOR GROUND STABILIZATION
 - CONCRETE MEDIAN SURFACE, 6 INCH (SPECIAL)
 - CONCRETE MEDIAN SURFACE, 6 INCH (SPECIAL) (WITHOUT STAMPED PATTERN)
 - COMBINATION CONCRETE CURB AND GUTTER, TYPE M-2.24
 - COMBINATION CONCRETE CURB AND GUTTER, TYPE M-4.24
 - COMBINATION CONCRETE CURB AND GUTTER, TYPE M-4.48
 - PORTLAND CEMENT CONCRETE SHOULDERS 14"
 - CONCRETE BARRIER, SINGLE FACE, 32 INCH HEIGHT; BARRIER BASE; BARRIER WALL MARKERS (PER IDOT STD. 635001 & 635006)
 - TRAFFIC BARRIER TERMINAL, TYPE VARIES
 - TOPSOIL FURNISH AND PLACE, 4"; SEEDING, CLASS 2A; EROSION CONTROL BLANKET
 - AGGREGATE FILL (INCLUDED IN THE COST OF "CONCRETE MEDIAN SURFACE, 6" (SPECIAL)") (MATCH DEPTH TO ADJACENT CURB & GUTTER)
 - POLYMERIZED BITUMINOUS CONCRETE SURFACE COURSE, MIX "F", N105, 1 1/4"
 - PIPE UNDERDRAIN, 6" (SEE DETAILS)
 - POLYMERIZED BITUMINOUS CONCRETE BINDER COURSE, SUPERPAVE, IL-19, N105, 2 1/4"
 - ELECTRICAL DUCTBANK (SEE ELECTRICAL INFRASTRUCTURE PLANS)
 - TOPSOIL FURNISH AND PLACE, 12"; COMPOST FURNISH AND PLACE 6" EROSION CONTROL BLANKET; SEEDING (SEE PLAN FOR CLASS)
 - CONCRETE BARRIER, SINGLE FACE, 42 INCH HEIGHT (SPECIAL); BARRIER BASE; CTA FENCE (SEE DETAILS); BARRIER WALL MARKERS (PER IDOT STD. 635001 & 635006)
 - PORTLAND CEMENT CONCRETE PAVEMENT 10" (JOINTED)
 - SUB-BASE GRANULAR MATERIAL, TYPE B 12"
 - SUB-BASE GRANULAR MATERIAL, TYPE B 6"
 - PORTLAND CEMENT CONCRETE SHOULDERS 9"
 - BITUMINOUS CONCRETE SURFACE COURSE, SUPERPAVE MIX "D", NTO, 1 1/2"
 - PORTLAND CEMENT CONCRETE BASE COURSE 13"
 - PORTLAND CEMENT CONCRETE PAVEMENT 14" (JOINTED)

- EXISTING LEGEND**
- ALL EXISTING PAVEMENT DEPTHS ARE FROM AS-BUILT PLANS AND ARE SUBJECT TO CHANGE
- BIT CONC SURFACE COURSE, 1 1/2"±
 - BIT CONC BINDER COURSE, 1 1/2"±
 - BIT CONC BINDER COURSE, 4 3/4"±
 - SUB-BASE GRANULAR MATERIAL, 4"±
 - SUB-BASE GRANULAR MATERIAL, 6"±
 - CRUSHED STONE, 5"±
 - PCC SHOULDERS, 9"±
 - PCC BASE COURSE, 9"±
 - COMB CONC CURB & GUTTER
 - PCC PAVEMENT, 10"± (W/ PAVEMENT FABRIC, 80 LBS±/100 SF)
 - CONCRETE BARRIER WALL
 - CTA BALLAST STONE; REGRADE AS NECESSARY (INCLUDE REGRADING IN THE COST OF "CONCRETE BARRIER, SINGLE FACE, 42 INCH HEIGHT (SPECIAL)")
 - BITUMINOUS SURFACE, 7"±
 - STABILIZED SUB-BASE, 4"±
 - SUB-BASE GRANULAR MATERIAL, 12"±
 - EXISTING PIPE UNDERDRAIN
 - EXISTING FIBER OPTIC DUCT

REVISIONS	
NAME	DATE

ILLINOIS DEPARTMENT OF TRANSPORTATION
 F.A.I. 94 (DAN RYAN EXPRESSWAY)
 EXISTING & PROPOSED TYPICAL SECTIONS
 NB I-94 (BISHOP FORD FREEWAY)
 (SHEET 4 OF 8)

SCALE: NONE
 DATE: MARCH 7, 2006
 DRAWN BY: RTM
 CHECKED BY: MPG

TYLIN INTERNATIONAL

* PAID FOR AS SUB-BASE GRANULAR MATERIAL, TYPE B 24"