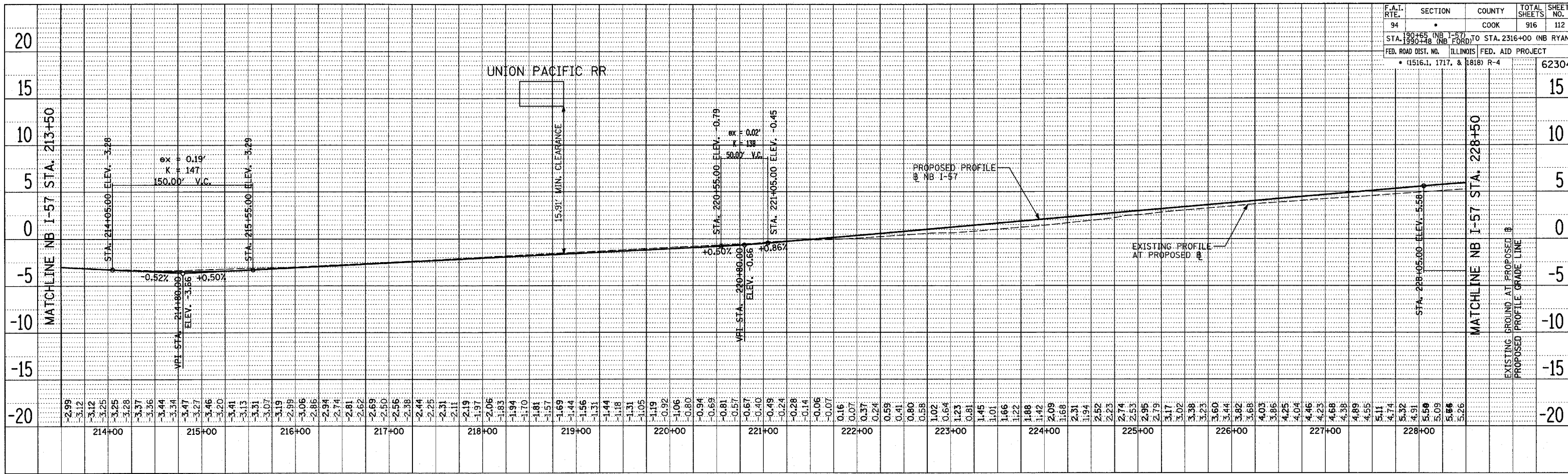
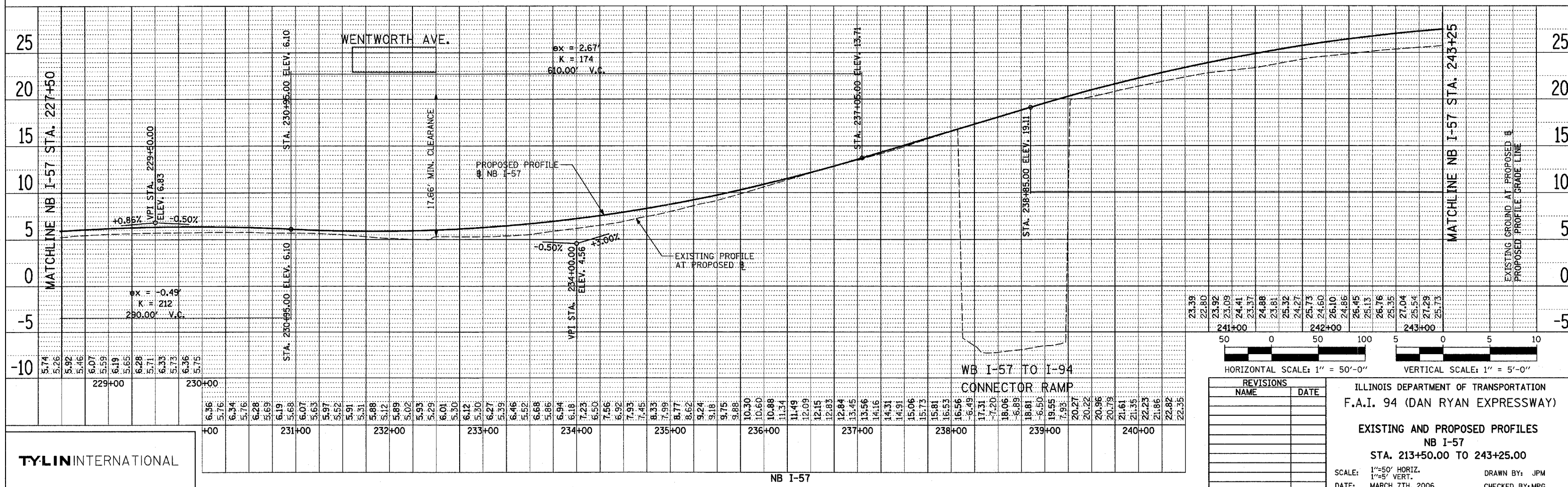


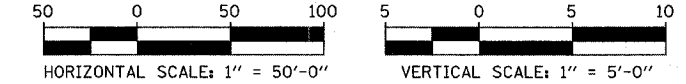
PLAN	REVISIONS	BY	DATE
NO.	NO.		



PLAN	REVISIONS	BY	DATE
NO.	NO.		



TYLIN INTERNATIONAL



REVISIONS	
NAME	DATE

ILLINOIS DEPARTMENT OF TRANSPORTATION
F.A.I. 94 (DAN RYAN EXPRESSWAY)
 EXISTING AND PROPOSED PROFILES
 NB I-57
 STA. 213+50.00 TO 243+25.00
 SCALE: 1"=50' HORIZ.
 1"=5' VERT.
 DATE: MARCH 7TH, 2006
 DRAWN BY: JPM
 CHECKED BY: MPG