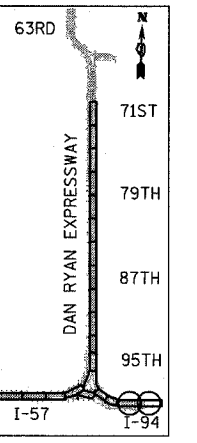
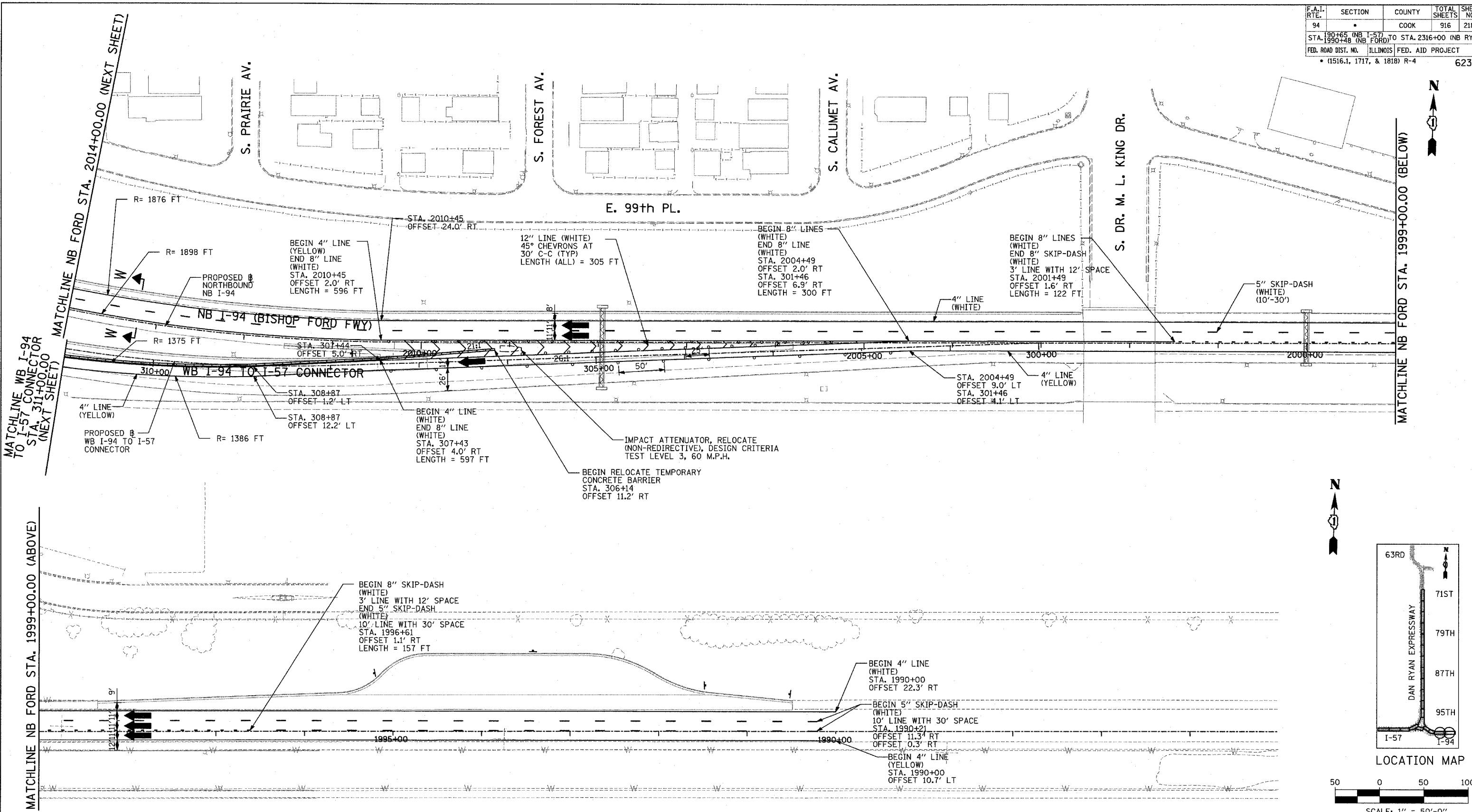
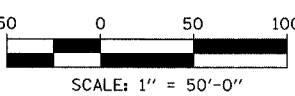


F.A.I. RTE.	SECTION	COUNTY	TOTAL SHEETS	SHEET NO.
94		COOK	916	218A
STA. 190+65 (NB I-57) TO STA. 2316+00 (NB RYAN)				
FED. ROAD DIST. NO. ILLINOIS FED. AID PROJECT				
• (1516.1, 1717, & 1818) R-4 62304				



LOCATION MAP



LEGEND:

- TEMPORARY CONCRETE BARRIER
- TRAFFIC LANE
- WORK ZONE
- BARRICADE, TYPE III
- DRUM WITH MONO-DIRECTIONAL STEADY BURNING LIGHT
- ARROW BOARD
- TEMPORARY PAVEMENT

REVISIONS	
NAME	DATE

ILLINOIS DEPARTMENT OF TRANSPORTATION
 F.A.I. 94 (DAN RYAN EXPRESSWAY)
 MAINTENANCE OF TRAFFIC PLAN
 STAGE 1B - NB I-94
 NB FORD STA. 1985+00 TO 2014+00
 SHEET 2 OF 7
 SCALE: 1"=50'-0"
 DATE: MARCH 7, 2006
 DRAWN BY: JDF
 CHECKED BY: RTM

TYLIN INTERNATIONAL

3/3/2006 4:17:34 PM