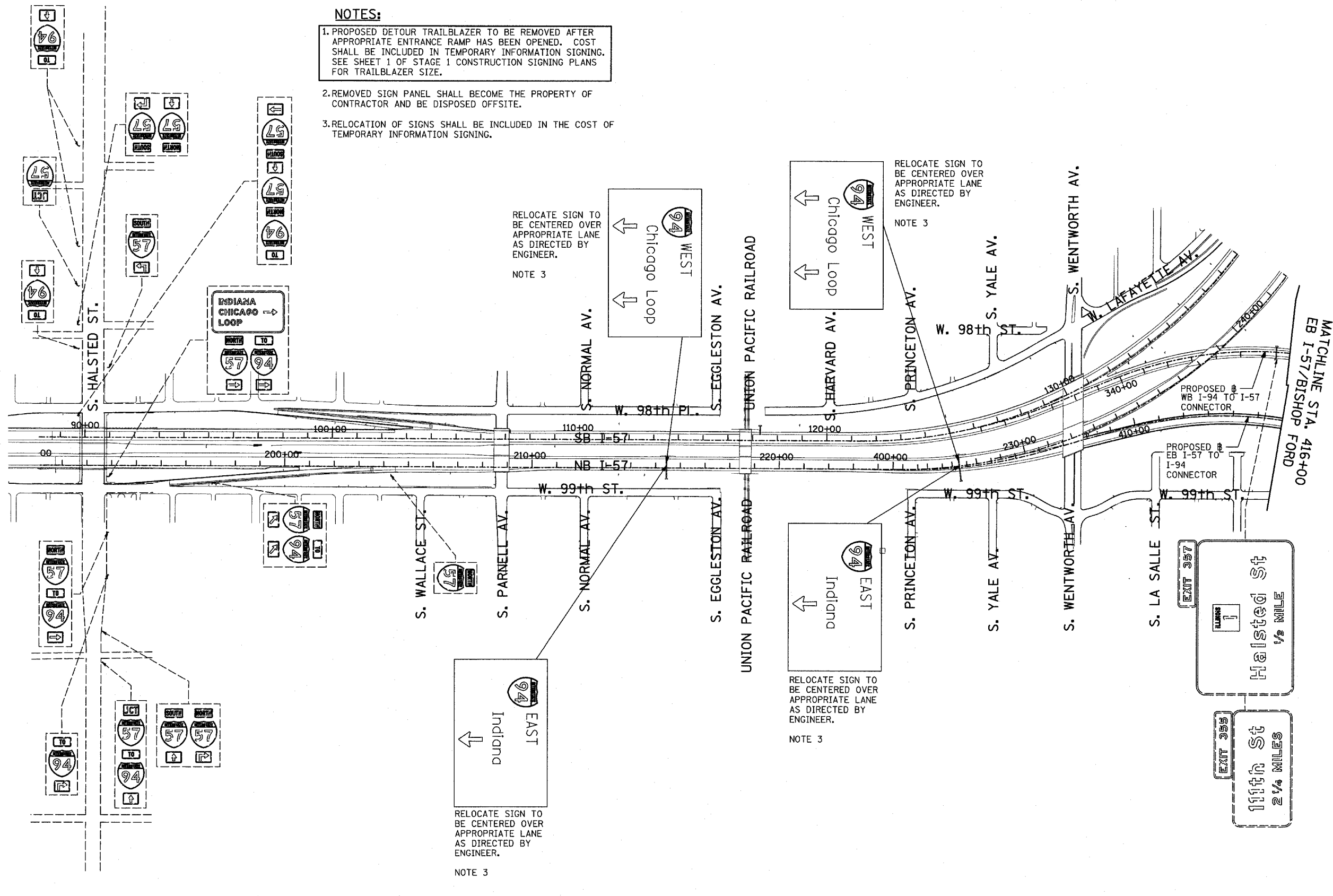


NOTES:

- PROPOSED DETOUR TRAILBLAZER TO BE REMOVED AFTER APPROPRIATE ENTRANCE RAMP HAS BEEN OPENED. COST SHALL BE INCLUDED IN TEMPORARY INFORMATION SIGNING. SEE SHEET 1 OF STAGE 1 CONSTRUCTION SIGNING PLANS FOR TRAILBLAZER SIZE.
- REMOVED SIGN PANEL SHALL BECOME THE PROPERTY OF CONTRACTOR AND BE DISPOSED OFFSITE.
- RELOCATION OF SIGNS SHALL BE INCLUDED IN THE COST OF TEMPORARY INFORMATION SIGNING.

SIGNING LEGEND:

- EXISTING GROUND MOUNTED SIGN
- EXISTING OVERHEAD TRUSS MOUNTED SIGN
- EXISTING OVERHEAD SIGN STRUCTURE-BRIDGE MOUNTED
- EXISTING OVERHEAD CANTILEVER MOUNTED SIGN
- PROPOSED GROUND MOUNTED SIGN
- PROPOSED OVERHEAD SIGN STRUCTURE - TRUSS
- CONSTRUCTION ZONE
- EXISTING SIGN
- EXISTING SIGN TO BE REMOVED
- PROPOSED SIGN

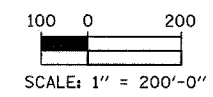
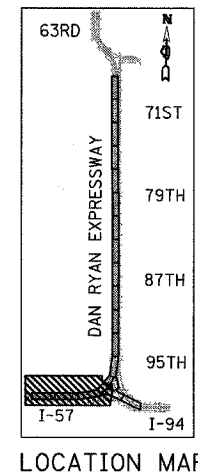


RELOCATE SIGN TO BE CENTERED OVER APPROPRIATE LANE AS DIRECTED BY ENGINEER.
 NOTE 3

RELOCATE SIGN TO BE CENTERED OVER APPROPRIATE LANE AS DIRECTED BY ENGINEER.
 NOTE 3

RELOCATE SIGN TO BE CENTERED OVER APPROPRIATE LANE AS DIRECTED BY ENGINEER.
 NOTE 3

RELOCATE SIGN TO BE CENTERED OVER APPROPRIATE LANE AS DIRECTED BY ENGINEER.
 NOTE 3



REVISIONS	
NAME	DATE

ILLINOIS DEPARTMENT OF TRANSPORTATION
 F.A.I. 94 (DAN RYAN EXPRESSWAY)
 CONSTRUCTION SIGNING-STAGE WINTER
 STA. 196+00 TO STA. 416+00
 SHEET 1 OF 3

SCALE: 1" = 200'
 DATE: MARCH 7, 2006
 DRAWN BY: AMB
 CHECKED BY: TGB