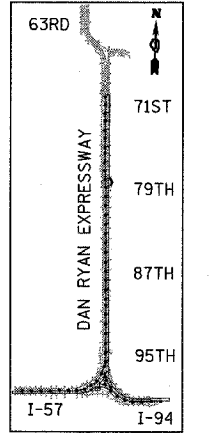
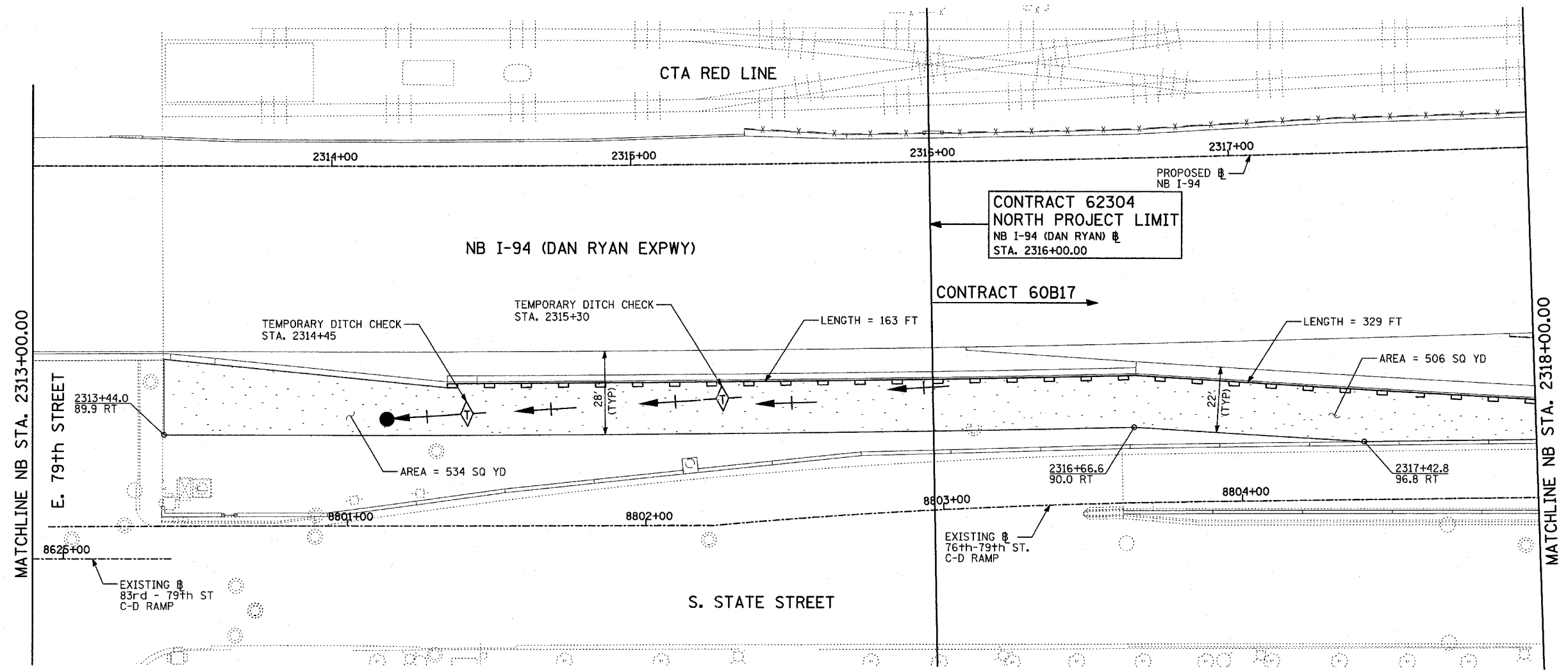
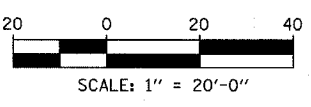


F.A.I. RTE.	SECTION	COUNTY	TOTAL SHEETS	SHEET NO.
94	*	COOK	916	303
STA. 190+65 (NB I-57) TO STA. 2316+00 (NB RYAN)				
FED. ROAD DIST. NO. ILLINOIS FED. AID PROJECT				
• (1516.1, 1717, & 1818) R-4				
				62304



LOCATION MAP



**LEGEND:**

- TEMPORARY EROSION CONTROL SEEDING
- SEDIMENT CONTROL, SILT FENCE
- INLET FILTER, TO BE INSTALLED IN OFF PROJECT DRAINAGE STRUCTURES ACCEPTING STORMWATER RUNOFF
- TEMPORARY FENCE
- TEMPORARY DITCH CHECK
- PROPOSED DRAINAGE SWALE (SEE DRAINAGE PLANS)
- EXISTING DRAINAGE SWALE
- TEMPORARY FENCE FOR TREE PROTECTION (15 FEET PER SIDE = 60 FEET TOTAL)

TOTAL NUMBER OF INLET FILTERS THIS SHEET: 0  
 TOTAL NUMBER OF TEMPORARY DITCH CHECKS THIS SHEET: 2  
 TOTAL NUMBER OF TREES TO BE PROTECTED THIS SHEET: 0

REVISIONS	
NAME	DATE

ILLINOIS DEPARTMENT OF TRANSPORTATION  
 F.A.I. 94 (DAN RYAN EXPRESSWAY)  
 EROSION CONTROL PLAN  
 NB I-94 (DAN RYAN EXPRESSWAY)  
 STA. 2313+00.00 TO 2318+00.00  
 (SHEET 21 OF 28)  
 SCALE: 1"=20'  
 DATE: MARCH 7, 2006  
 DRAWN BY: JUS  
 CHECKED BY: MPG



03/07/2006 09:41 AM