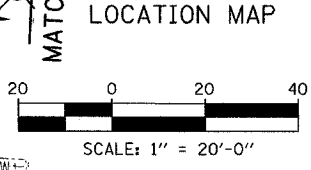
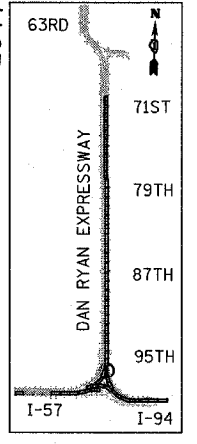
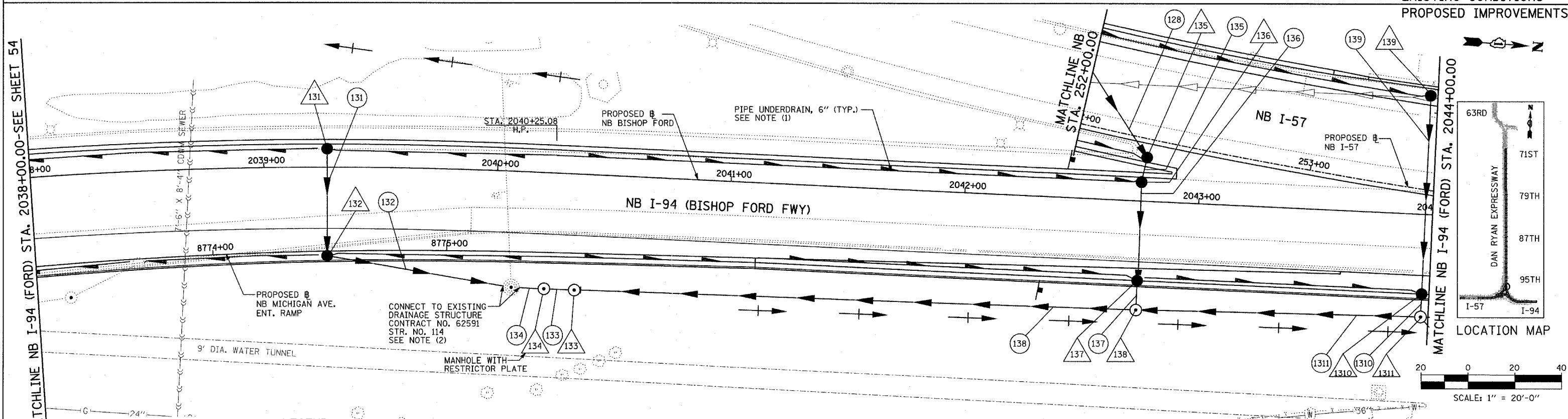
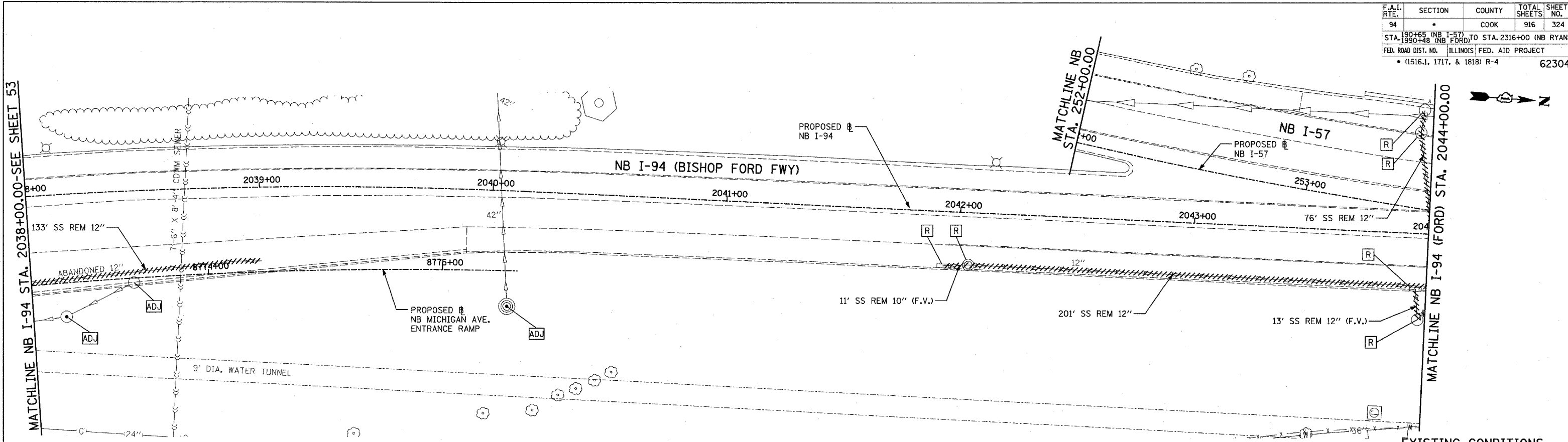


F.A.I. RTE.	SECTION	COUNTY	TOTAL SHEETS	SHEET NO.
94		COOK	916	324
STA. 190+65 (NB I-57) TO STA. 2316+00 (NB RYAN)				
FED. ROAD DIST. NO. ILLINOIS FED. AID PROJECT				
• (1516.1, 1717, & 1818) R-4 62304				



MATCHLINE NB I-94 (FORD) STA. 2038+00.00-SEE SHEET 54

MATCHLINE NB I-94 STA. 2038+00.00-SEE SHEET 53

EXISTING CONDITIONS
PROPOSED IMPROVEMENTS

LEGEND:

- EXISTING COMBINED SEWER
- PROPOSED STORM SEWER NUMBER (X=SHEET NO., Y=PIPE NO.)
- PROPOSED STRUCTURE NUMBER (X=SHEET NO., Y=STRUCTURE NO.)
- PIPE STUBOUT TO BE PLUGGED
- SEWER PLUG
- F.V. FIELD VERIFY
- UTILITY REMOVAL
- PROPOSED CATCH BASIN CONSTRUCTED IN CONCURRENT CONTRACT 62593
- PROPOSED STORM SEWER CONSTRUCTED IN CONCURRENT CONTRACT 62593

NOTES:

1. FOR CLARITY, PIPE UNDERDRAINS ARE SHOWN OFFSET FROM THEIR PROPOSED LOCATIONS. FOR DETAILED PLACEMENT, SEE SHEET "PIPE UNDERDRAINS DETAIL."
2. CORE DRILL AND CONNECT TO EXISTING DRAINAGE STRUCTURE. CONNECTION COST SHALL BE INCLUDED IN THE COST TO CONSTRUCT THE STORM SEWER.

REVISIONS	
NAME	DATE

ILLINOIS DEPARTMENT OF TRANSPORTATION
F.A.I. 94 (DAN RYAN EXPRESSWAY)
DRAINAGE AND UTILITY PLAN
NB I-94 (BISHOP FORD FWY) MAINLINE
RAMP STA. 2038+00.00 TO 2044+00.00

SCALE: 1"=20'
DATE: MARCH 7, 2006

DRAWN BY: MB
CHECKED BY: DA

TYLIN INTERNATIONAL