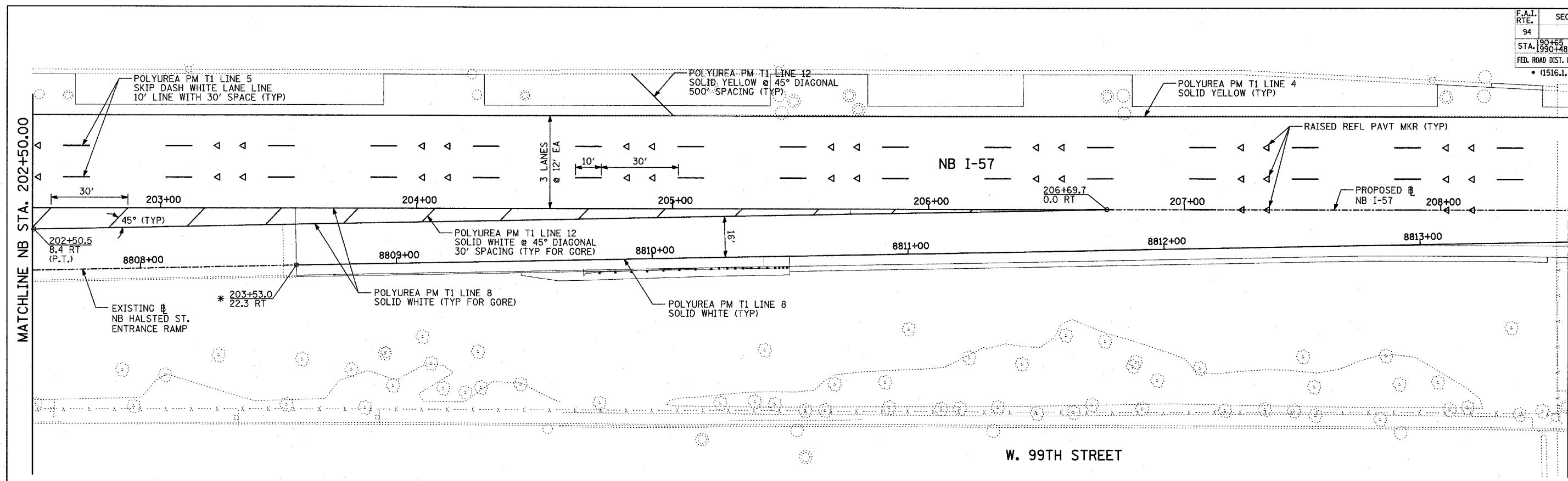


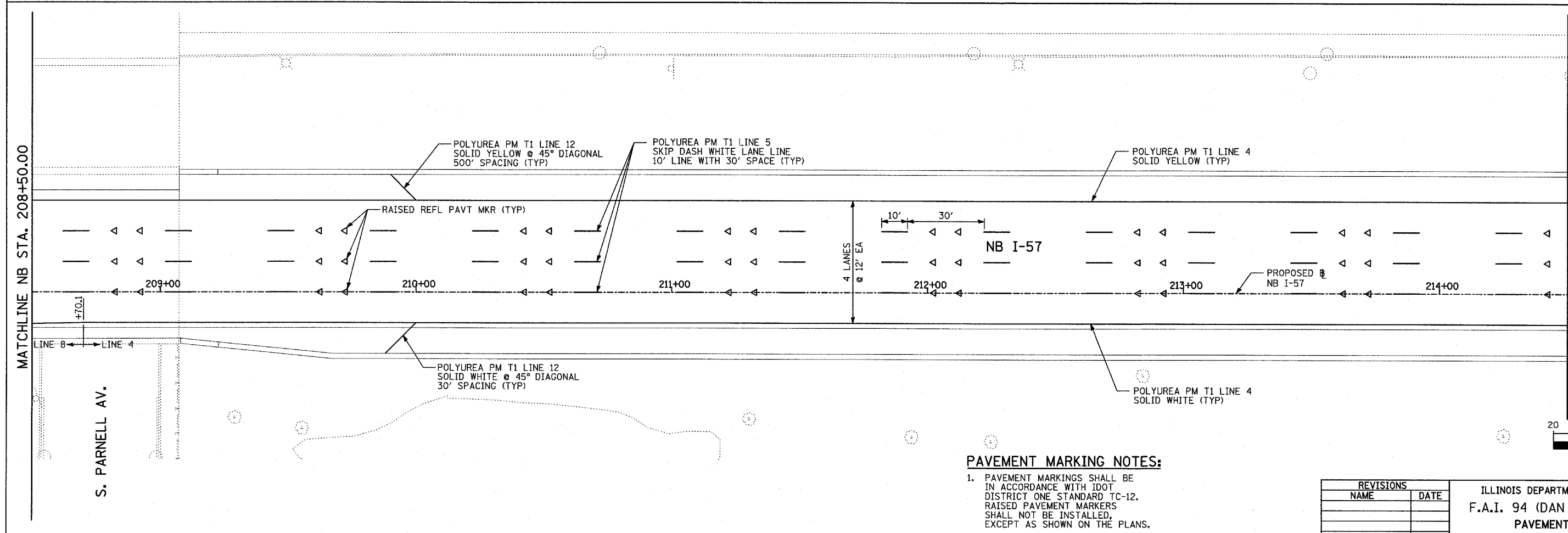
F.A.I. RTE.	SECTION	COUNTY	TOTAL SHEETS	SHEET NO.
94		COOK	916	419
STA. 190+65 (NB I-57) TO STA. 2316+00 (NB RYAN)				
FED. ROAD DIST. NO. ILLINOIS FED. AID PROJECT				
• (1516.1, 1717, & 1818) R-4				

62304



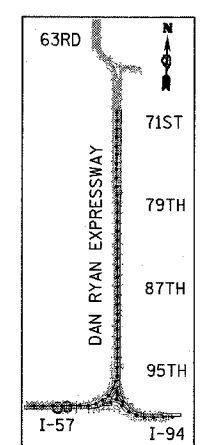
MATCHLINE NB STA. 208+50.00

MATCHLINE NB STA. 202+50.00

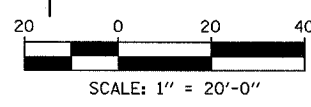


MATCHLINE NB STA. 214+50.00

MATCHLINE NB STA. 208+50.00



LOCATION MAP



**PAVEMENT MARKING NOTES:**

- PAVEMENT MARKINGS SHALL BE IN ACCORDANCE WITH IDOT DISTRICT ONE STANDARD TC-12. RAISED PAVEMENT MARKERS SHALL NOT BE INSTALLED, EXCEPT AS SHOWN ON THE PLANS.
- THE RESIDENT ENGINEER SHALL CONTACT JULIA FOX (847) 705-4151, EXPRESSWAY TRAFFIC CONTROL SUPERVISOR, PRIOR TO PLACING ANY PAVEMENT MARKINGS.

REVISIONS	
NAME	DATE

ILLINOIS DEPARTMENT OF TRANSPORTATION  
 F.A.I. 94 (DAN RYAN EXPRESSWAY)  
 PAVEMENT MARKING PLAN  
 NB I-57  
 STA. 202+50.00 TO 214+50.00  
 (SHEET 3 OF 29)

SCALE: 1"=20'  
 DATE: MARCH 7, 2006  
 DRAWN BY: JJS  
 CHECKED BY: AMB

**TYLIN** INTERNATIONAL

\* MATCH WITH EXISTING PAVEMENT MARKING AT THIS POINT