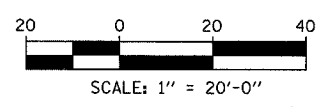


LOCATION MAP



PAVEMENT MARKING NOTES:

1. PAVEMENT MARKINGS SHALL BE IN ACCORDANCE WITH IDOT DISTRICT ONE STANDARD TC-12. RAISED PAVEMENT MARKERS SHALL NOT BE INSTALLED, EXCEPT AS SHOWN ON THE PLANS.
2. THE RESIDENT ENGINEER SHALL CONTACT JULIA FOX (847) 705-4151, EXPRESSWAY TRAFFIC CONTROL SUPERVISOR, PRIOR TO PLACING ANY PAVEMENT MARKINGS.

TYLIN INTERNATIONAL

REVISIONS	
NAME	DATE

ILLINOIS DEPARTMENT OF TRANSPORTATION
F.A.I. 94 (DAN RYAN EXPRESSWAY)
PAVEMENT MARKING PLAN
NB I-57 AND WB I-94 TO I-57 CONNECTOR
NB I-57 STA 236+00.00 TO 241+50.00
(SHEET 8 OF 29)

SCALE: 1"=20'
DATE: MARCH 7, 2006

DRAWN BY: JJS
CHECKED BY: AMB

03/03/2006 10:20:47 AM