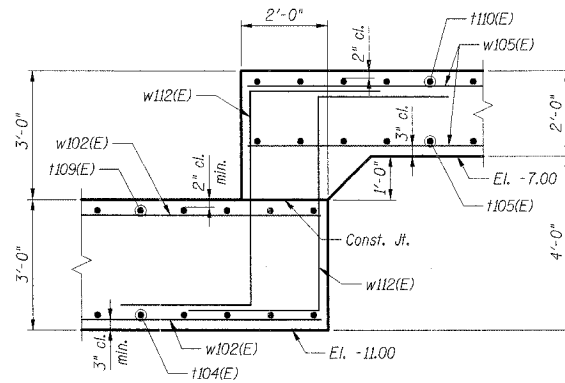
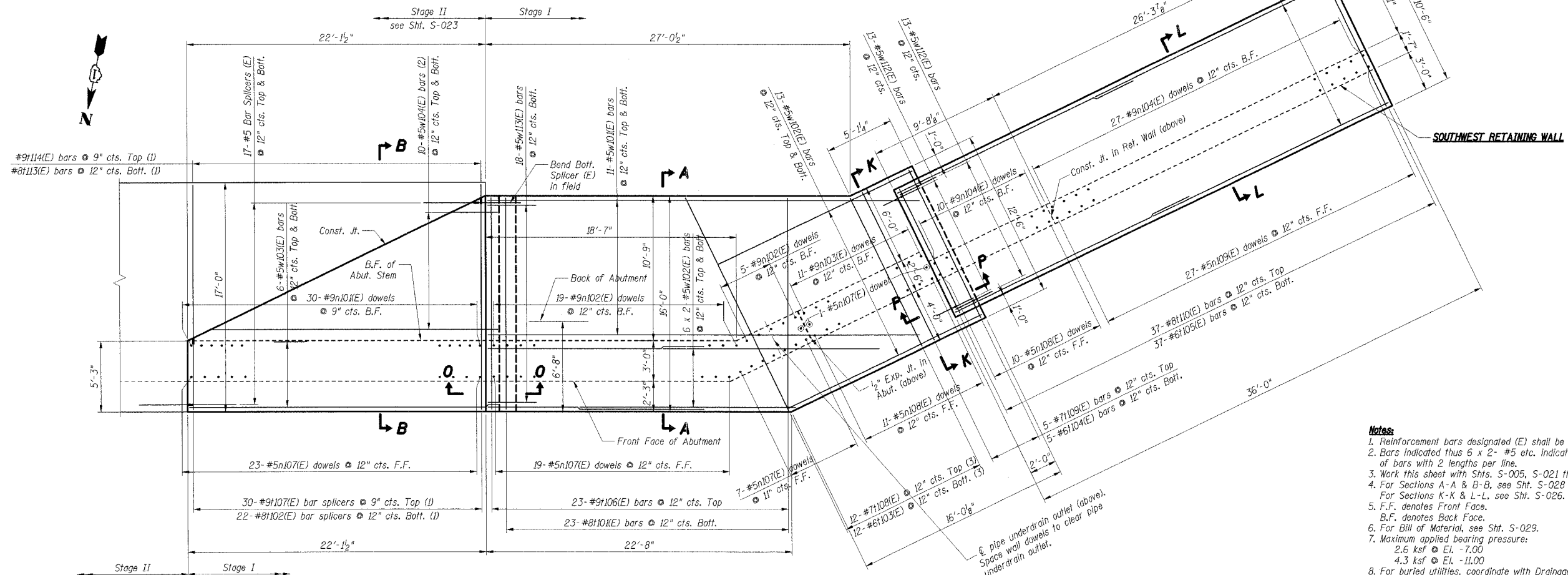


SECTION O-O



SECTION P-P



FOUNDATION PLAN I - SOUTH ABUTMENT

- Notes:**
- Reinforcement bars designated (E) shall be epoxy coated.
 - Bars indicated thus 6 x 2-#5 etc. indicates 6 lines of bars with 2 lengths per line.
 - Work this sheet with Shts. S-005, S-021 thru S-029 & S-040.
 - For Sections A-A & B-B, see Sht. S-028. For Sections K-K & L-L, see Sht. S-026.
 - F.F. denotes Front Face. B.F. denotes Back Face.
 - For Bill of Material, see Sht. S-029.
 - Maximum applied bearing pressure:
 2.6 ksf @ El. -7.00
 4.3 ksf @ El. -11.00
 - For buried utilities, coordinate with Drainage and Utility plans in this Contract and in IDOT Contract No. 62593.

- Re-bar Notes:**
- See Sht. S-043 for variable length Bar Splicers.
 - Cut bars according to Cutting Diagram, Sht. S-029. Use half of bars in Batt. of Footing & remainder in Top of Footing.
 - Cut bars according to Cutting Diagram, Sht. S-029.

REVISIONS	
NAME	DATE

SHT. S-022

ILLINOIS DEPARTMENT OF TRANSPORTATION
 F.A.I. ROUTE 57 (INTERSTATE 57)
 I-57 NB OVER WB CONNECTOR
 SN 016-0072 OLD, SN 016-2852 NEW
 STA. 238+73.54
 COOK COUNTY, SECTION (1516.1, 1717, & 1818) R-4
 SOUTH ABUTMENT
 FOUNDATION PLAN I

DATE: 03/07/06

DRAWN BY: HBJ
 CHECKED BY: TCU

TENG

TENG & ASSOCIATES, INC.
 ENGINEERS ARCHITECTS PLANNERS
 206 N. MICHIGAN AVE., CHICAGO, IL 60601
 TELEPHONE 312.461.1000

\\F:\V001\PROJ\ILL\CONTRACT\62304\STRUCT\DRN\DRN0018\DRN...
 3-01-2006 15:48:56