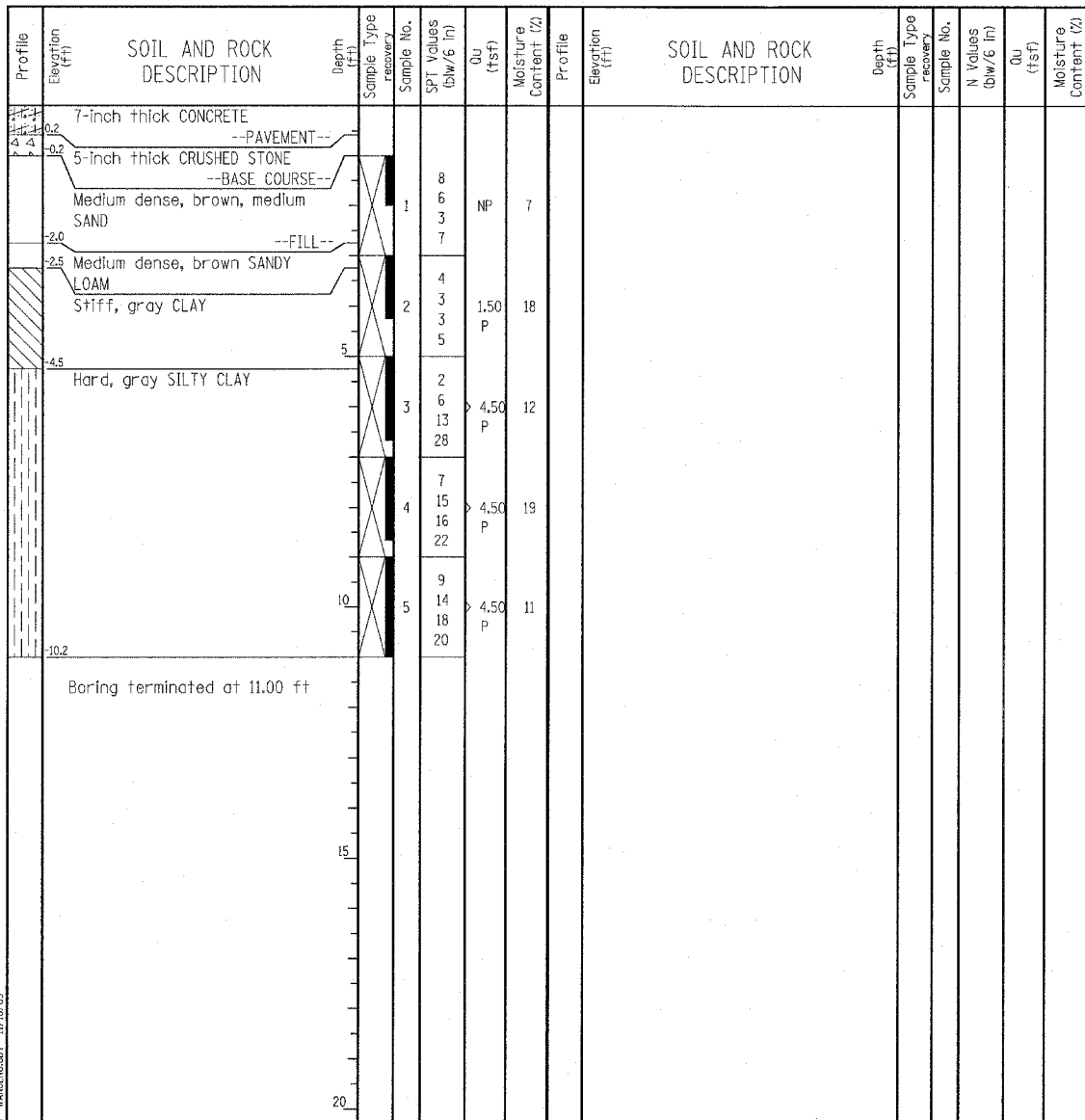


Wang Engineering, INC.
 Consulting Geotechnical and Environmental Engineers
 wangeng3@wangeng.com
 1145 Main Street
 Lombard, IL 60148
 Telephone: 630 953-9928
 Fax: 630 953-9938

BORING LOG P-019 Page 1 of 1
 WEI Job No.: 414-07-01
 Datum: CCD
 Elevation: 0.80 ft
 North: 1846058.89 ft
 East: 1177762.94 ft
 Station: 2246+91.72
 Offset: 57.84' RT

Client: T. Y. LIN International, Inc.
 Project: Dan Ryan Contracts 62304 (20) and 62593 (23).
 Location: City of Chicago, Cook County, Illinois

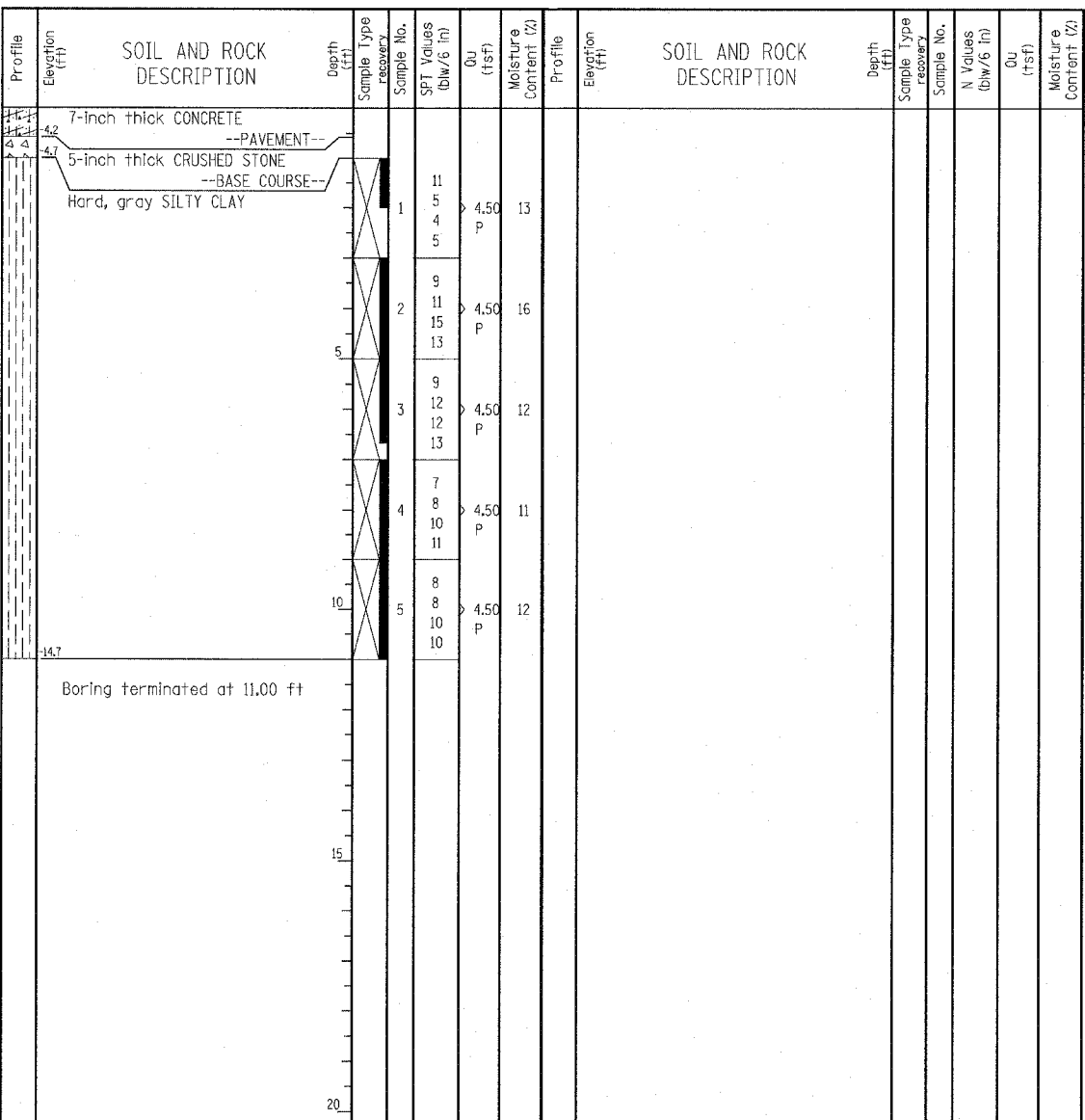


GENERAL NOTES				WATER LEVEL DATA			
Begin Drilling	07-17-2003	Complete Drilling	07-17-2003	While Drilling	☑	DRY	
Drilling Contractor	Patrick Drilling	Drill Rig	CME 75 TMR	At Completion of Drilling	☑	DRY	
Driller	J&B	Logger	Y. Shiu	Time After Drilling	NA		
Drilling Method	3.25" ID HSA; Boring backfilled with bentonite upon completion			Depth to Water	☑	NA	
				The stratification lines represent the approximate boundary between soil types; the actual transition may be gradual.			

Wang Engineering, INC.
 Consulting Geotechnical and Environmental Engineers
 wangeng3@wangeng.com
 1145 Main Street
 Lombard, IL 60148
 Telephone: 630 953-9928
 Fax: 630 953-9938

BORING LOG P-020 Page 1 of 1
 WEI Job No.: 414-07-01
 Datum: CCD
 Elevation: -3.65 ft
 North: 1846313.20 ft
 East: 1177756.03 ft
 Station: 2249+46.13
 Offset: 58.22' RT

Client: T. Y. LIN International, Inc.
 Project: Dan Ryan Contracts 62304 (20) and 62593 (23).
 Location: City of Chicago, Cook County, Illinois



GENERAL NOTES				WATER LEVEL DATA			
Begin Drilling	07-17-2003	Complete Drilling	07-17-2003	While Drilling	☑	DRY	
Drilling Contractor	Patrick Drilling	Drill Rig	CME 75 TMR	At Completion of Drilling	☑	DRY	
Driller	J&B	Logger	Y. Shiu	Time After Drilling	NA		
Drilling Method	3.25" ID HSA; Boring backfilled with bentonite upon completion			Depth to Water	☑	NA	
				The stratification lines represent the approximate boundary between soil types; the actual transition may be gradual.			

LEGEND

NP NON-PLASTIC
 B BULGE FAILURE
 S SHEAR FAILURE
 P POCKET PENETROMETER

TYLIN INTERNATIONAL

REVISIONS	
NAME	DATE

ILLINOIS DEPARTMENT OF TRANSPORTATION
 F.A.I. 94 (DAN RYAN EXPRESSWAY)
 SOIL BORINGS P-019 & P-020

SCALE: N.T.S. DRAWN BY: RTM
 DATE: MARCH 7, 2006 CHECKED BY: MPG