

Wang Engineering, Inc.
 Consulting Geotechnical and Environmental Engineers
 wangeng3@wangeng.com
 1145 Main Street
 Lombard, IL 60148
 Telephone: 630 953-9928
 Fax: 630 953-9938

BORING LOG P-029
 WEI Job No.: 414-07-01

Datum: CCD
 Elevation: 1.53 ft
 North: 1849067.49 ft
 East: 1177676.72 ft
 Station: 2277+01.56
 Offset: 57.77' RT

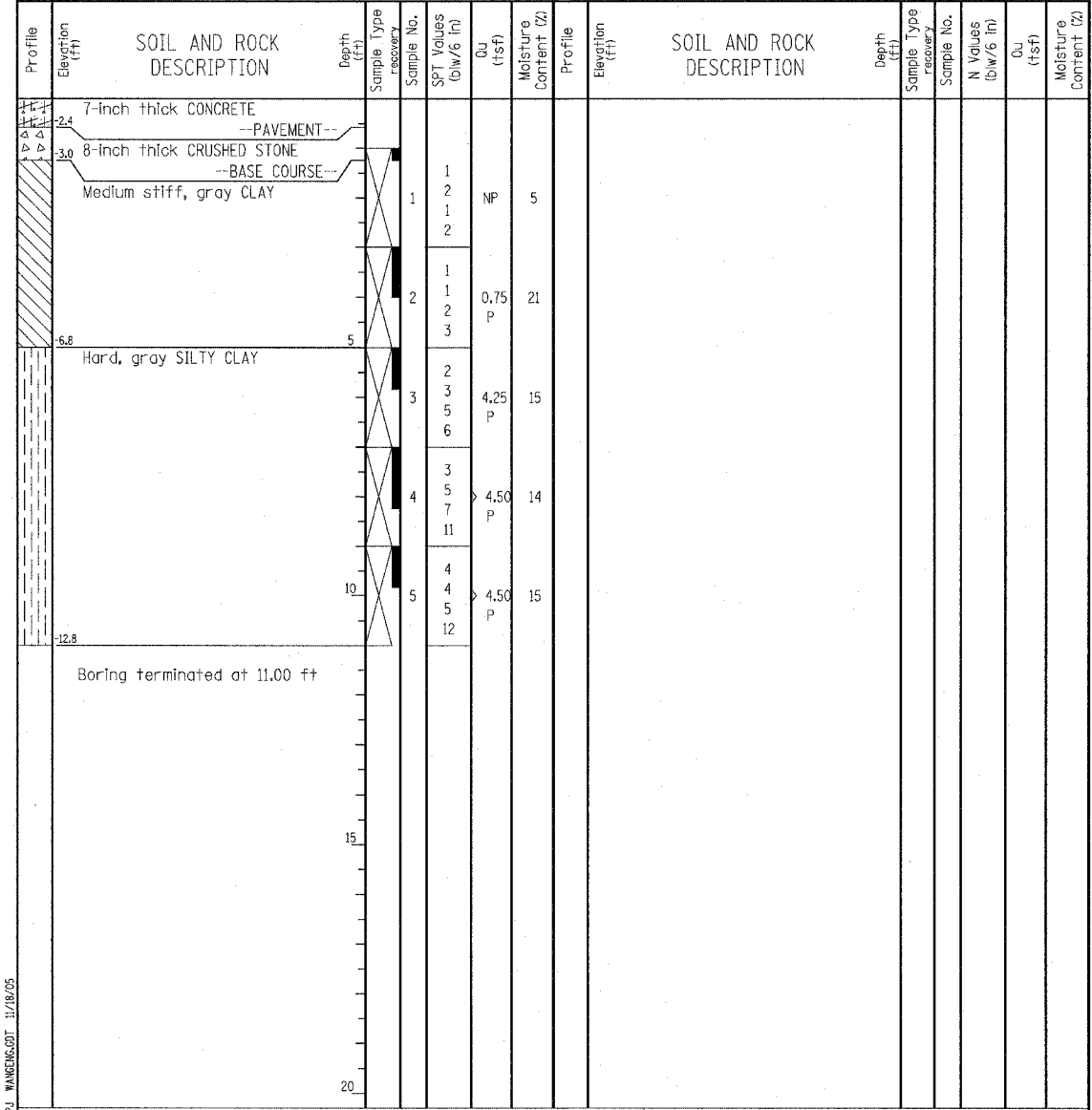
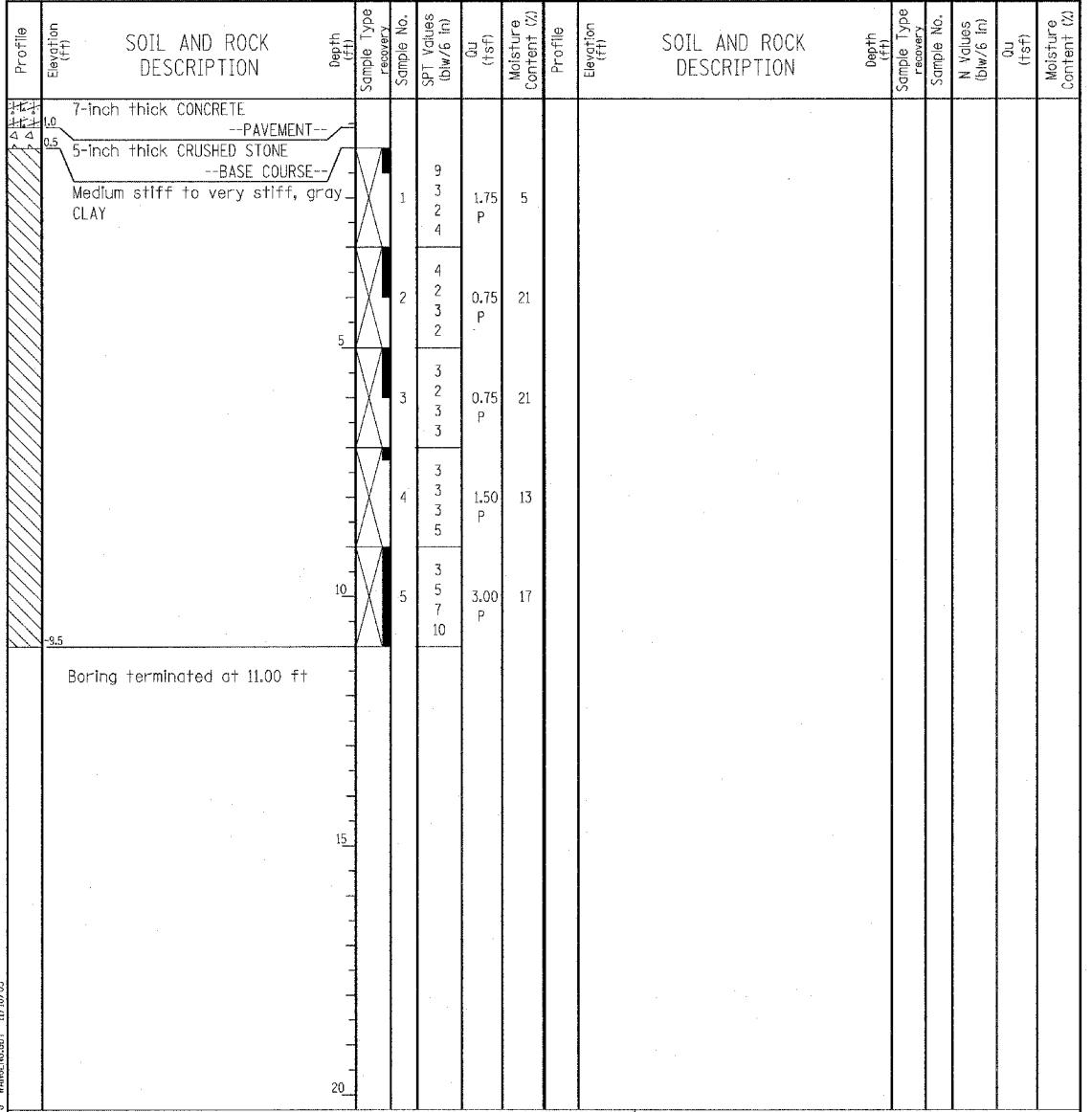
Client: T. Y. LIN International, Inc.
 Project: Dan Ryan Contracts 62304 (20) and 62593 (23)
 Location: City of Chicago, Cook County, Illinois

Wang Engineering, Inc.
 Consulting Geotechnical and Environmental Engineers
 wangeng3@wangeng.com
 1145 Main Street
 Lombard, IL 60148
 Telephone: 630 953-9928
 Fax: 630 953-9938

BORING LOG P-030
 WEI Job No.: 414-07-01

Datum: CCD
 Elevation: -1.78 ft
 North: 1849318.01 ft
 East: 1177670.68 ft
 Station: 2279+52.15
 Offset: 58.90' RT

Client: T. Y. LIN International, Inc.
 Project: Dan Ryan Contracts 62304 (20) and 62593 (23)
 Location: City of Chicago, Cook County, Illinois



GENERAL NOTES				WATER LEVEL DATA	
Begin Drilling	07-16-2003	Complete Drilling	07-16-2003	While Drilling	DRY
Drilling Contractor	Patrick Drilling	Drill Rig	CME 75 TMR	At Completion of Drilling	DRY
Driller	J&B	Logger	Y. Shlu	Time After Drilling	NA
Checked by	MLS	Drilling Method	3.25" ID HSA; Boring backfilled with bentonite upon completion	Depth to Water	NA

GENERAL NOTES				WATER LEVEL DATA	
Begin Drilling	07-16-2003	Complete Drilling	07-16-2003	While Drilling	DRY
Drilling Contractor	Patrick Drilling	Drill Rig	CME 75 TMR	At Completion of Drilling	DRY
Driller	J&B	Logger	Y. Shlu	Time After Drilling	NA
Checked by	MLS	Drilling Method	3.25" ID HSA; Boring backfilled with bentonite upon completion	Depth to Water	NA

LEGEND

NP NON-PLASTIC
 B BULGE FAILURE
 S SHEAR FAILURE
 P POCKET PENETROMETER

TYLIN INTERNATIONAL

REVISIONS	
NAME	DATE