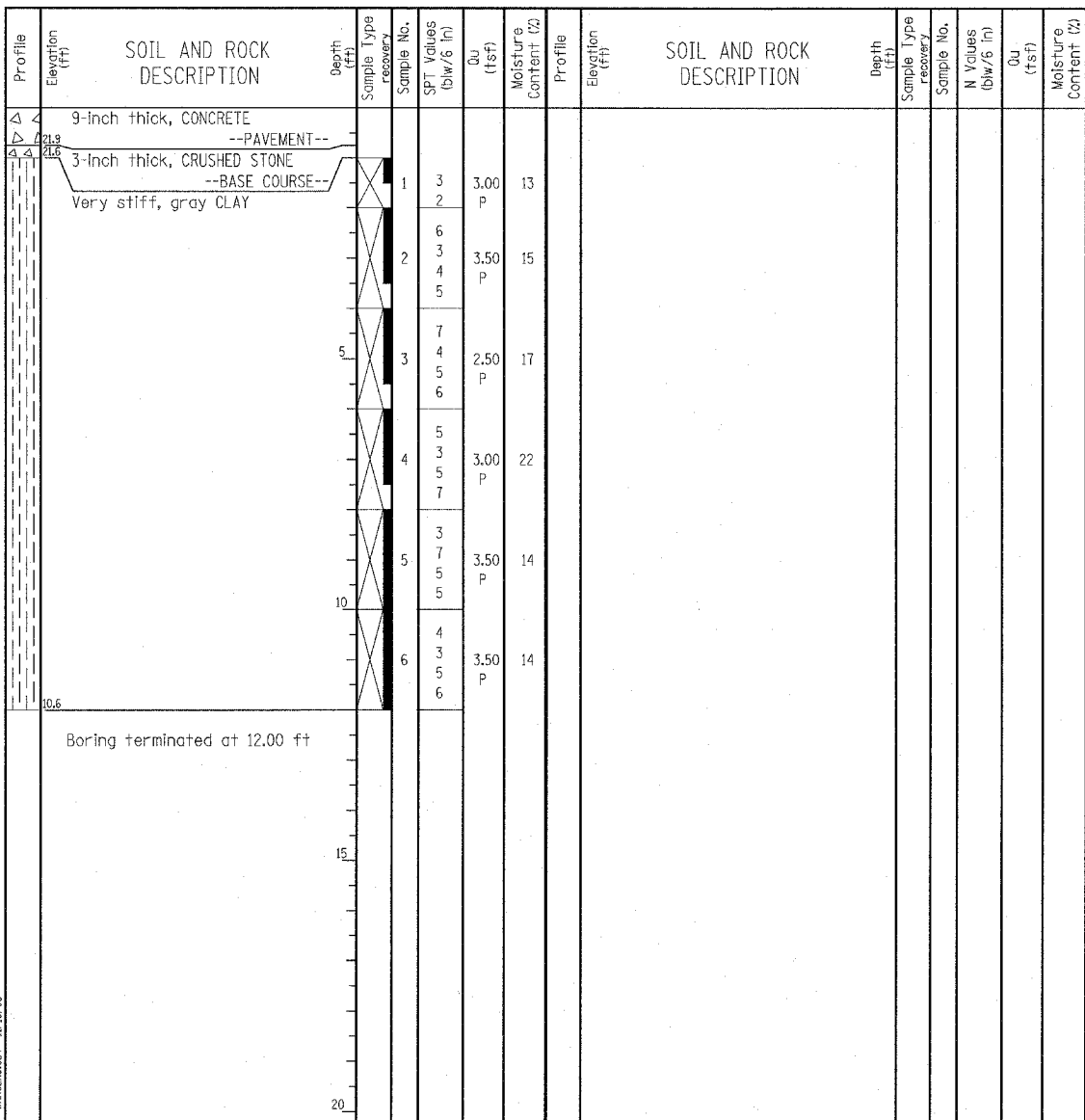


**Wang Engineering, INC.**  
 Consulting Geotechnical and Environmental Engineers  
 wangeng3@wangeng.com  
 1145 Main Street  
 Lombard, IL 60148  
 Telephone: 630 953-9928  
 Fax: 630 953-9938

**BORING LOG SP-51**  
 WEI Job No.: 414-07-01  
 Datum: CCD  
 Elevation: 22.64 ft  
 North: 1840646.22 ft  
 East: 1177720.32 ft  
 Station: 247+84  
 Offset: 29' LT

Client: T. Y. LIN International, Inc.  
 Project: Dan Ryan Contracts 62304 (20) and 62593 (23)  
 Location: City of Chicago, Cook County, Illinois

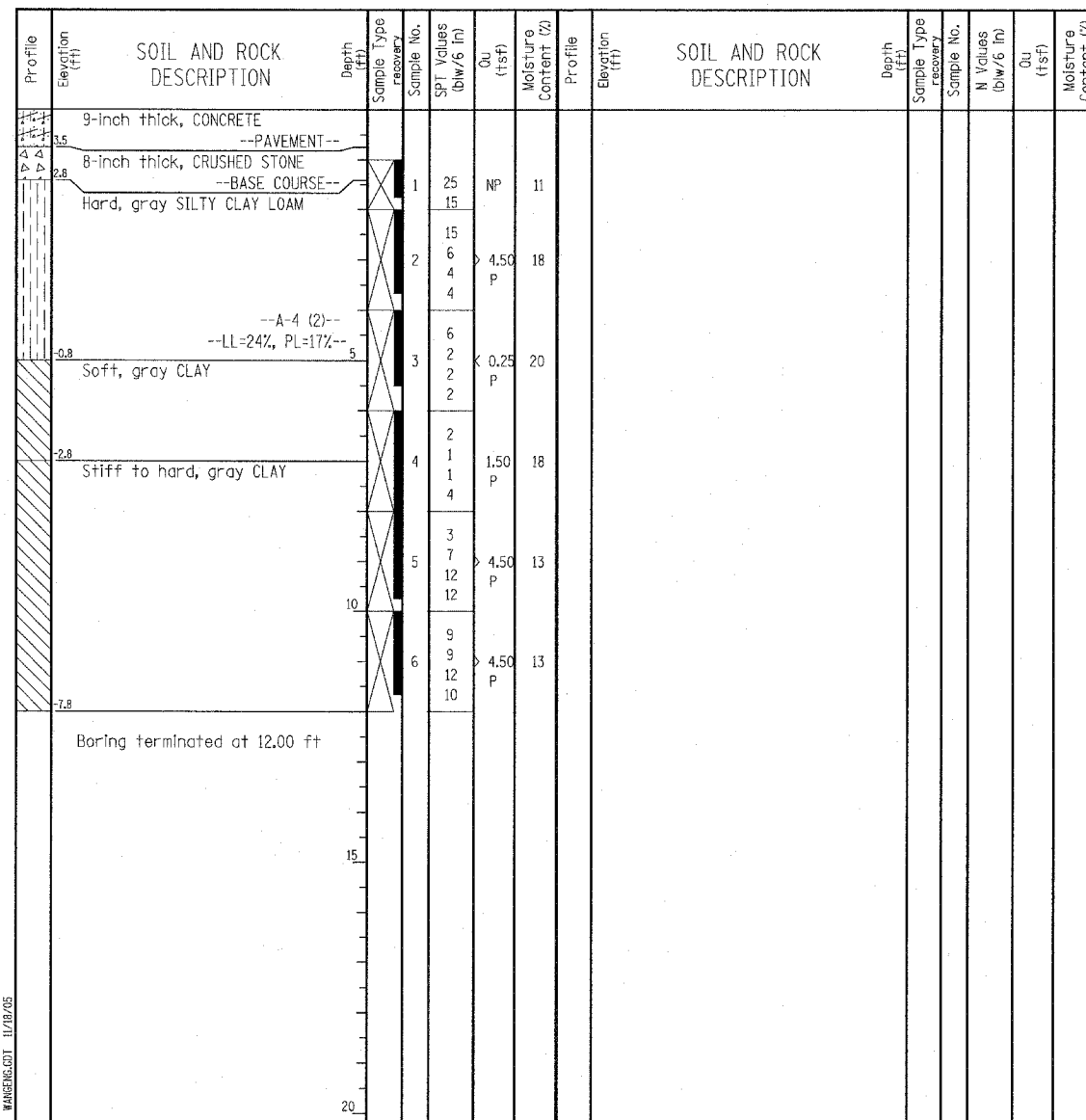


GENERAL NOTES				WATER LEVEL DATA			
Begin Drilling	09-01-2005	Complete Drilling	09-01-2005	While Drilling	∇	DRY	
Drilling Contractor	Precon Drilling	Drill Rig	CME 75 TMR	At Completion of Drilling	∇	DRY	
Driller	J&L	Logger	S. Sugiarto	Time After Drilling	NA		
Drilling Method	3.25" ID HSA; Boring backfilled with bentonite upon completion			Depth to Water	∇	NA	

**Wang Engineering, INC.**  
 Consulting Geotechnical and Environmental Engineers  
 wangeng3@wangeng.com  
 1145 Main Street  
 Lombard, IL 60148  
 Telephone: 630 953-9928  
 Fax: 630 953-9938

**BORING LOG SP-54**  
 WEI Job No.: 414-07-01  
 Datum: CCD  
 Elevation: 4.21 ft  
 North: 1839548.23 ft  
 East: 1176630.96 ft  
 Station: 231+65  
 Offset: 34' LT

Client: T. Y. LIN International, Inc.  
 Project: Dan Ryan Contracts 62304 (20) and 62593 (23)  
 Location: City of Chicago, Cook County, Illinois



GENERAL NOTES				WATER LEVEL DATA			
Begin Drilling	09-01-2005	Complete Drilling	09-01-2005	While Drilling	∇	DRY	
Drilling Contractor	Precon Drilling	Drill Rig	CME 75 TMR	At Completion of Drilling	∇	DRY	
Driller	J&L	Logger	K. Jacob	Time After Drilling	NA		
Drilling Method	3.25" ID HSA; Boring backfilled with bentonite upon completion			Depth to Water	∇	NA	

**LEGEND**

NP NON-PLASTIC  
 B BULGE FAILURE  
 S SHEAR FAILURE  
 P POCKET PENETROMETER

**TYLIN INTERNATIONAL**

REVISIONS	
NAME	DATE

ILLINOIS DEPARTMENT OF TRANSPORTATION  
 F.A.I. 94 (DAN RYAN EXPRESSWAY)  
 SOIL BORINGS SP-51 & SP-54

SCALE: N.T.S. DRAWN BY: RTM  
 DATE: MARCH 7, 2006 CHECKED BY: MPG