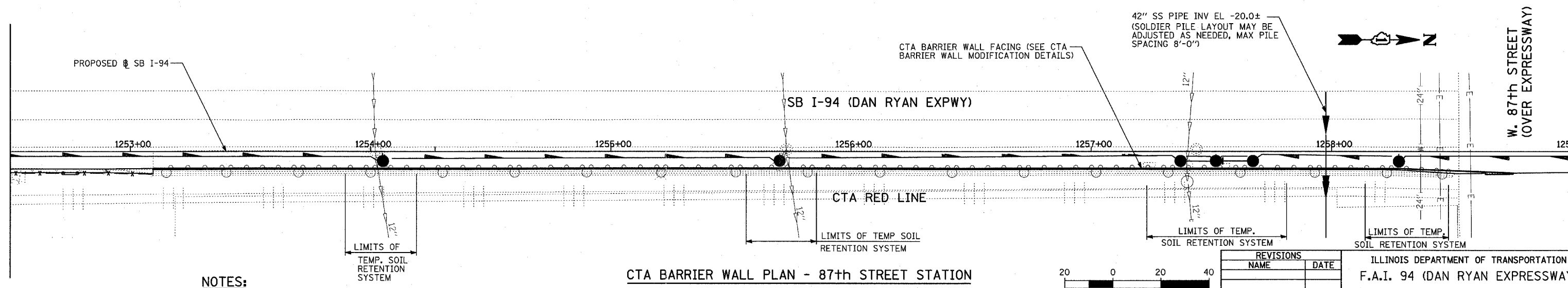
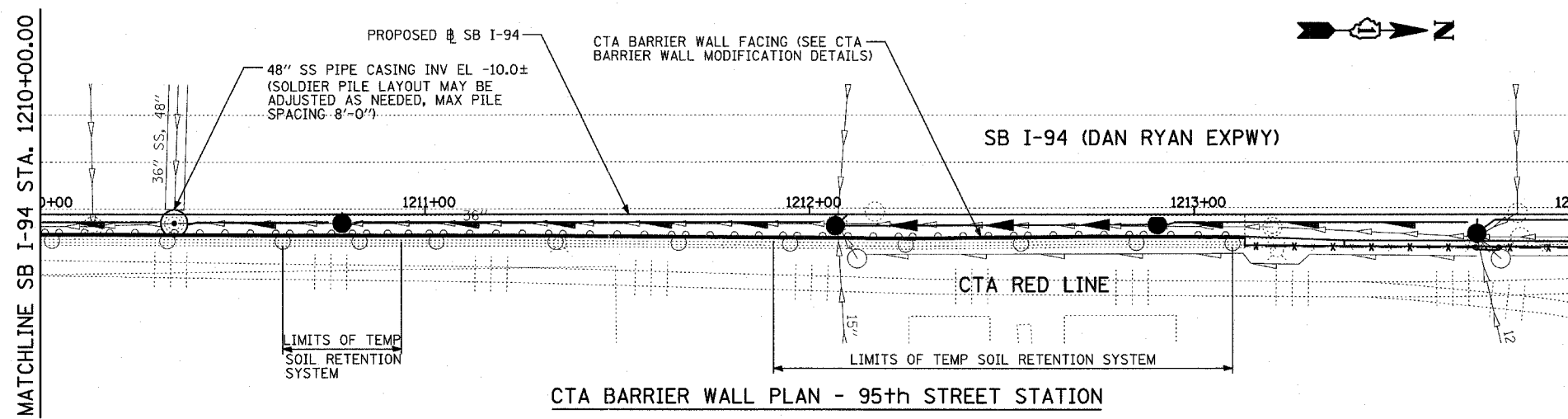
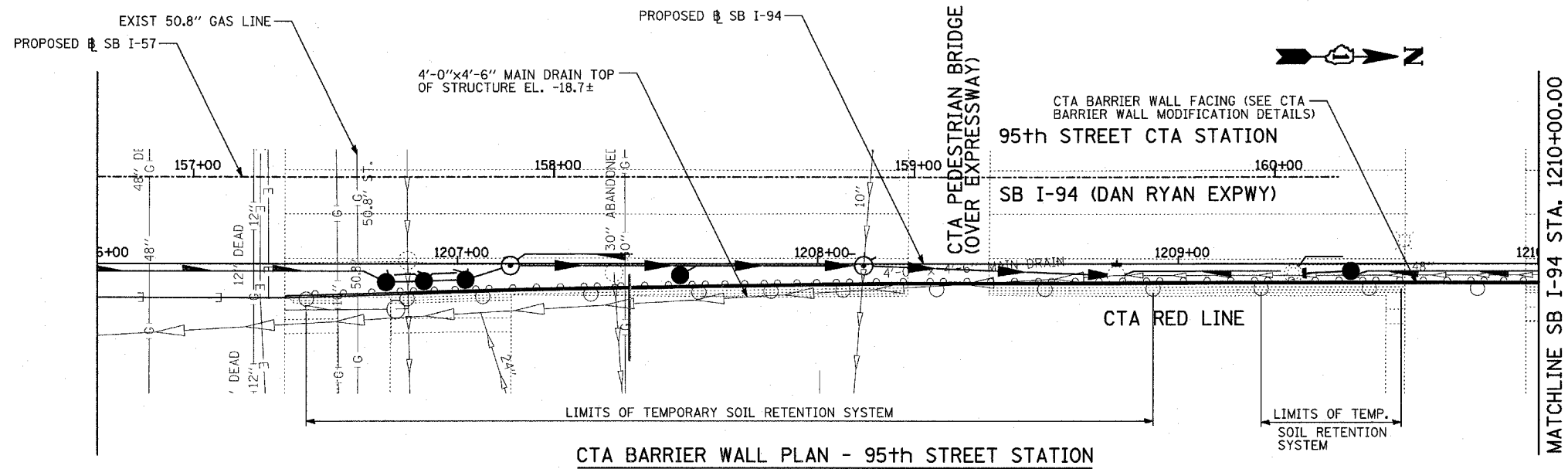


F.A.I. RTE.	SECTION	COUNTY	TOTAL SHEETS	SHEET NO.
94		COOK	764	114
STA. 88+60 (SB I-57) TO STA. 1313+00 (SB RYAN)				
FED. ROAD DIST. NO. ILLINOIS FED. AID PROJECT				
• (1516.1, 1717, & 1818) R-5 62593				



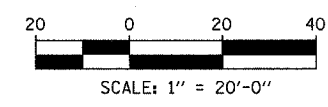
NOTES:

1. THE LIMITS SHOWN FOR THE TEMPORARY SOIL RETENTION SYSTEM FOR DRAINAGE IMPROVEMENTS IS APPROXIMATE. THE ACTUAL LIMITS SHALL BE AS DESIGNED BY THE CONTRACTOR AND APPROVED BY THE ENGINEER & THE CTA.
2. THE AREA OF THE TEMPORARY SOIL RETENTION SYSTEM FOR THE PROPOSED DRAINAGE STRUCTURE(S) IS AS INDICATED ON THE SCHEDULE GIVEN ON SHEET 151.

3. THE PROPOSED SOLDIER PILE WALL & DETAILS INDICATED ON THIS SHEET & SHEETS B1-B3 ARE DESIGNED TO RETAIN THE CTA BALLAST DURING EXCAVATION FOR THE PROPOSED PAVEMENT SECTION ONLY.
4. WORK THIS SHEET WITH SHEETS B1 TO B3.
5. EXISTING SUB-PIER LOCATIONS ARE TAKEN FROM EXISTING PLANS, SEE SHEETS 124-129.

LEGEND:

- - EXISTING SUB-PIER
- - PROPOSED SOLDIER PILE
- - PROPOSED CATCH BASIN



REVISIONS	
NAME	DATE

ILLINOIS DEPARTMENT OF TRANSPORTATION
 F.A.I. 94 (DAN RYAN EXPRESSWAY)
 CTA STATION BARRIER WALL MODIFICATIONS
 79TH, 87TH & 95TH STREET STATIONS:
 LOCATION PLAN 95TH & 87TH STREET

SCALE: DATE: MARCH 1, 2006
 DRAWN BY: PL
 CHECKED BY: SP