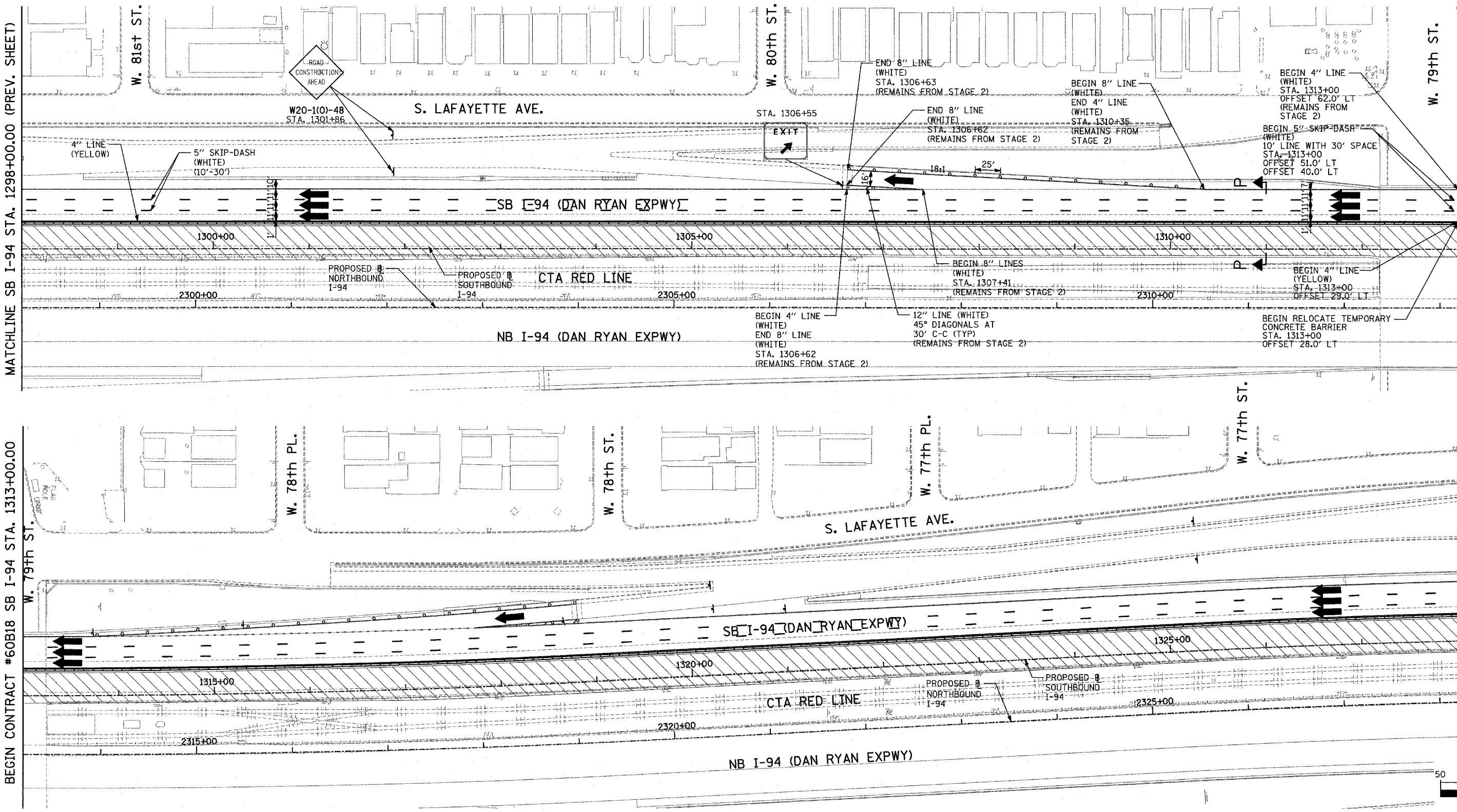


F.A.I. RTE.	SECTION	COUNTY	TOTAL SHEETS	SHEET NO.
94		COOK	764	215

STA. 88+60 (SB I-57) TO STA. 1313+00 (SB RYAN)
 STA. 1126+91 (SB FORD)
 FED. ROAD DIST. NO. ILLINOIS FED. AID PROJECT
 (1516.1, 1717, & 1818) R-5 62593

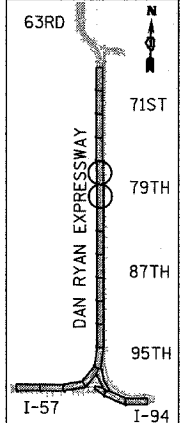
NOTE: MOT AT THE END OF CONTRACT 62593 MUST AT ALL TIMES MATCH CONTRACT 60B18 TO THE NORTH IN ACCORDANCE WITH IDOT DISTRICT 1 STANDARDS AND DETAILS.



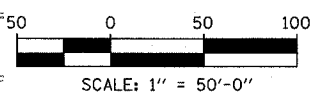
MATCHLINE SB I-94 STA. 1298+00.00 (PREV. SHEET)

END CONTRACT #62593 SB I-94 STA. 1313+00.00

BEGIN CONTRACT #60B18 SB I-94 STA. 1313+00.00



LOCATION MAP



LEGEND:

- TEMPORARY CONCRETE BARRIER
- TRAFFIC LANE
- WORK ZONE
- BARRICADE, TYPE III
- DRUM WITH MONO-DIRECTIONAL STEADY BURNING LIGHT
- ARROW BOARD
- TEMPORARY PAVEMENT

REVISIONS	
NAME	DATE

ILLINOIS DEPARTMENT OF TRANSPORTATION
 F.A.I. 94 (DAN RYAN EXPRESSWAY)
 MAINTENANCE OF TRAFFIC PLAN
 STAGE 3 - SB I-94
 SB I-94 STA. 1298+00 TO 1328+00
 SHEET 3 OF 3

SCALE: 1"=50'-0"
 DATE: MARCH 1, 2006

DRAWN BY: JDF
 CHECKED BY: RTM

TYLIN INTERNATIONAL