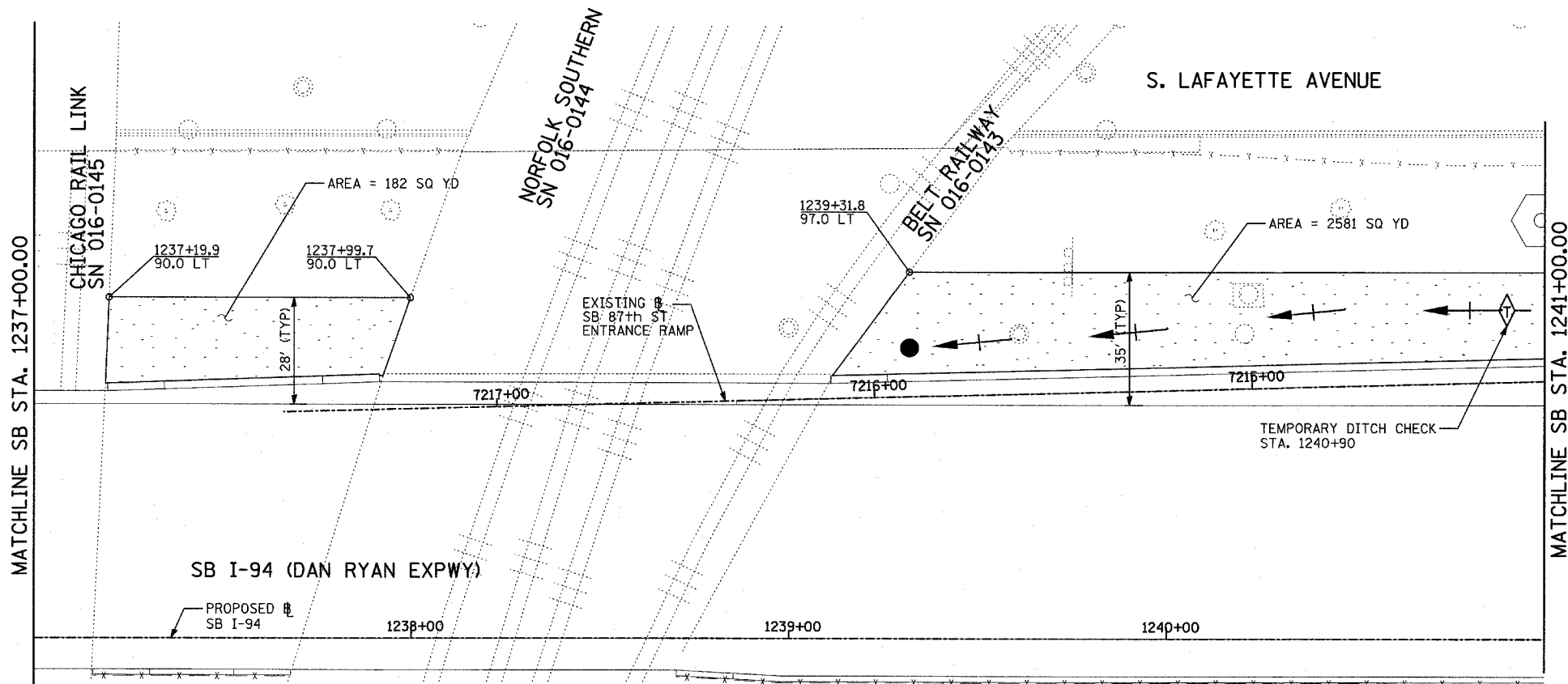
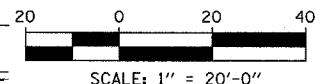
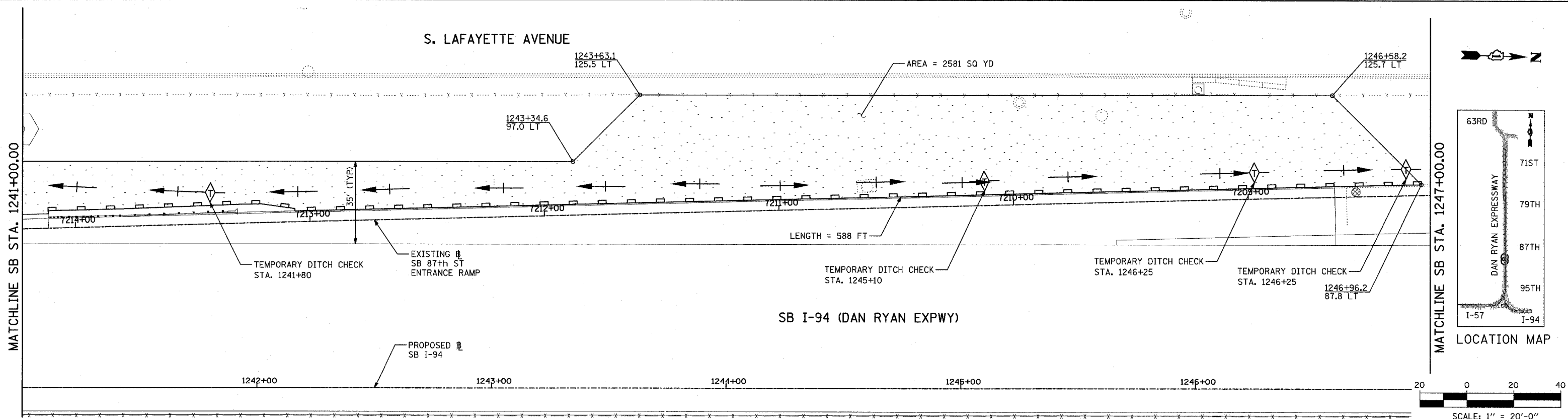


F.A.I. RTE.	SECTION	COUNTY	TOTAL SHEETS	SHEET NO.
94		COOK	764	268
STA. 88+60 (SB I-57) TO STA. 1313+00 (SB RYAN)				
FED. ROAD DIST. NO. ILLINOIS FED. AID PROJECT				
(1516.1, 1717, & 1818) R-5				62593



- LEGEND:**
- TEMPORARY EROSION CONTROL SEEDING
  - SEDIMENT CONTROL, SILT FENCE
  - INLET FILTER, TO BE INSTALLED IN OFF PROJECT DRAINAGE STRUCTURES ACCEPTING STORMWATER RUNOFF
  - TEMPORARY FENCE
  - TEMPORARY DITCH CHECK
  - PROPOSED DRAINAGE SWALE (SEE DRAINAGE PLANS)
  - EXISTING DRAINAGE SWALE
  - TEMPORARY FENCE FOR TREE PROTECTION (15 FEET PER SIDE = 60 FEET TOTAL)



**TYL** INTERNATIONAL

TOTAL NUMBER OF INLET FILTERS THIS SHEET: 1  
 TOTAL NUMBER OF TEMPORARY DITCH CHECKS THIS SHEET: 5  
 TOTAL NUMBER OF TREES TO BE PROTECTED THIS SHEET: 0

REVISIONS	
NAME	DATE

ILLINOIS DEPARTMENT OF TRANSPORTATION  
 F.A.I. 94 (DAN RYAN EXPRESSWAY)  
 EROSION CONTROL PLAN  
 SB I-94 (DAN RYAN EXPRESSWAY)  
 STA. 1237+00.00 TO 1247+00.00  
 SHEET 13 OF 24

SCALE: 1"=20'  
 DATE: MARCH 1, 2006  
 DRAWN BY: JJS  
 CHECKED BY: MPG