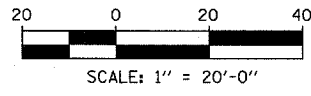
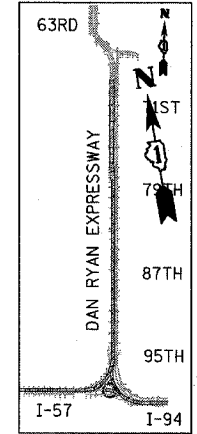
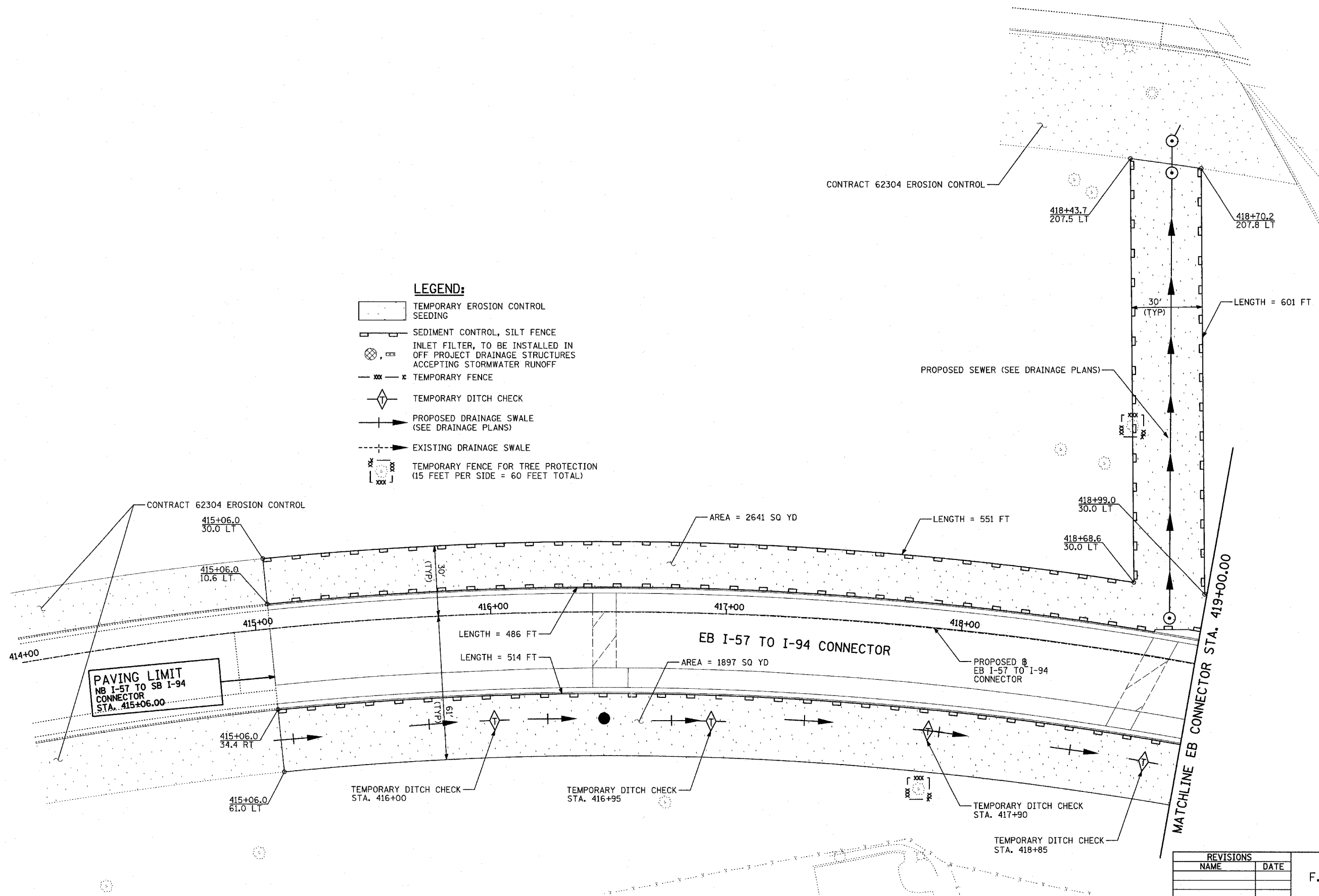


- LEGEND:**
- TEMPORARY EROSION CONTROL SEEDING
 - SEDIMENT CONTROL, SILT FENCE
 - INLET FILTER, TO BE INSTALLED IN OFF PROJECT DRAINAGE STRUCTURES ACCEPTING STORMWATER RUNOFF
 - TEMPORARY FENCE
 - TEMPORARY DITCH CHECK
 - PROPOSED DRAINAGE SWALE (SEE DRAINAGE PLANS)
 - EXISTING DRAINAGE SWALE
 - TEMPORARY FENCE FOR TREE PROTECTION (15 FEET PER SIDE = 60 FEET TOTAL)



TYLIN INTERNATIONAL

TOTAL NUMBER OF INLET FILTERS THIS SHEET: 0
 TOTAL NUMBER OF TEMPORARY DITCH CHECKS THIS SHEET: 4
 TOTAL NUMBER OF TREES TO BE PROTECTED THIS SHEET: 2

REVISIONS	
NAME	DATE

ILLINOIS DEPARTMENT OF TRANSPORTATION
 F.A.I. 94 (DAN RYAN EXPRESSWAY)
 EROSION CONTROL PLAN
 EB I-57 TO I-94 CONNECTOR
 STA. 415+06.00 TO STA. 419+00.00
 SHEET 24 OF 24

SCALE: 1"=20'
 DATE: MARCH 1, 2006

DRAWN BY: JJS
 CHECKED BY: MPG