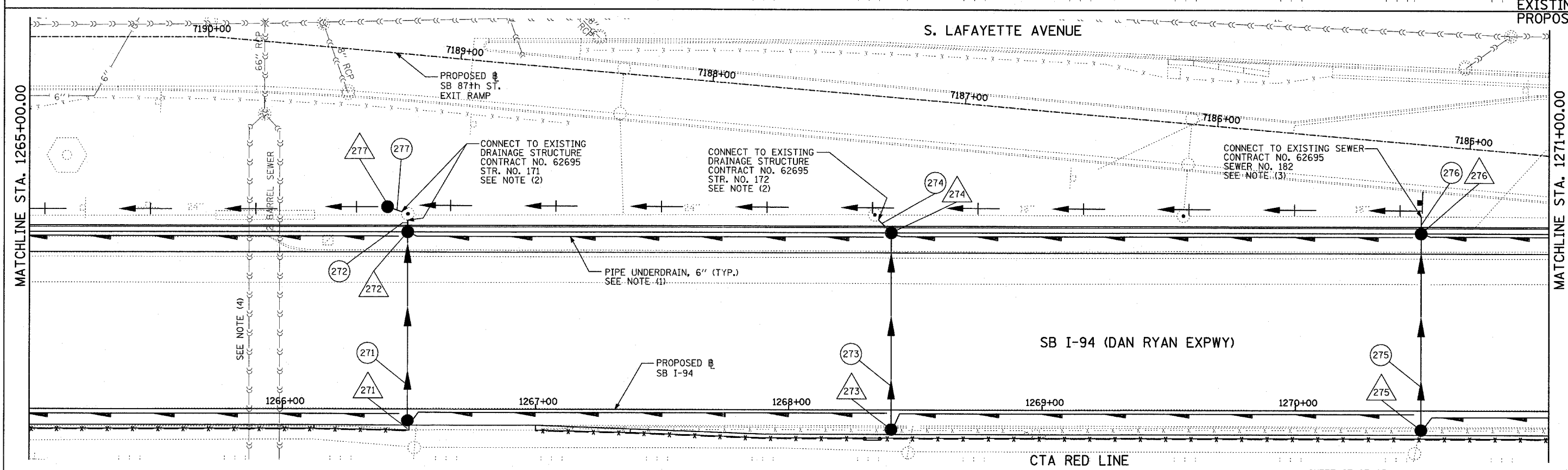
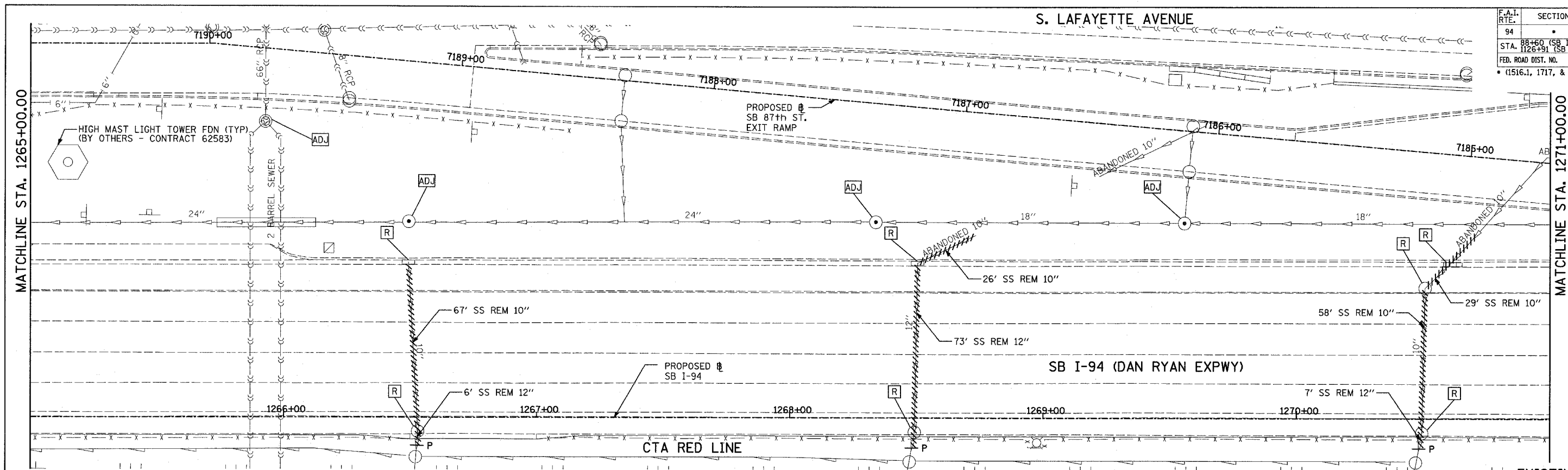
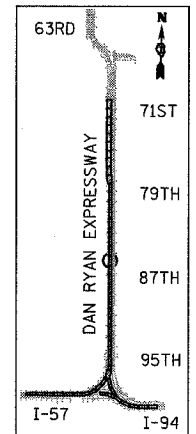


F.A.I. RTE.	SECTION	COUNTY	TOTAL SHEETS	SHEET NO.
94		COOK	764	308
STA. 1126+91 (SB FORD) TO STA. 1313+00 (SB RYAN)				
FED. ROAD DIST. NO. ILLINOIS FED. AID PROJECT				
(1516.1, 1717, & 1818) R-5				
				62593



EXISTING CONDITIONS  
PROPOSED IMPROVEMENTS



LOCATION MAP

**LEGEND:**

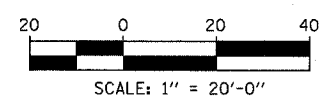
- EXISTING COMBINED SEWER
- PROPOSED STORM SEWER NUMBER (X=SHEET NO., Y=PIPE NO.)
- PROPOSED STRUCTURE NUMBER (X=SHEET NO., Y=STRUCTURE NO.)
- PIPE STUBOUT TO BE PLUGGED
- P SEWER PLUG
- F.V. FIELD VERIFY
- UTILITY REMOVAL
- PROPOSED CATCH BASIN CONSTRUCTED IN CONCURRENT CONTRACT 62304
- PROPOSED STORM SEWER CONSTRUCTED IN CONCURRENT CONTRACT 62304

**NOTES:**

1. FOR CLARITY, PIPE UNDERDRAINS ARE SHOWN OFFSET FROM THEIR PROPOSED LOCATIONS. FOR DETAILED PLACEMENT, SEE SHEET "PIPE UNDERDRAINS DETAIL."
2. CORE DRILL AND CONNECT TO EXISTING DRAINAGE STRUCTURE. CONNECTION COST SHALL BE INCLUDED IN THE COST TO CONSTRUCT THE STORM SEWER.
3. COST SHALL NOT BE PAID FOR SEPARATELY BUT INCLUDED IN COST OF SEWER INSTALLATION.
4. THE CONTRACTOR SHALL COORDINATE ALL WORK WITH COC-DOWN SEWER SECTION PRIOR TO ANY EXCAVATION. RISER SHAFTS, IF ENCOUNTERED, SHALL BE CONSTRUCTED AND PAID FOR AS PER DETAIL SHOWN ON DRAINAGE DETAIL SHEET 3 OF 3.

SHEET 27 OF 65

REVISIONS	
NAME	DATE



ILLINOIS DEPARTMENT OF TRANSPORTATION  
F.A.I. 94 (DAN RYAN EXPRESSWAY)  
DRAINAGE AND UTILITY PLAN  
SB I-94 (DAN RYAN EXPRESSWAY)  
SB I-94 STA. 1265+00.00 TO 1271+00.00

SCALE: 1"=20'  
DATE: MARCH 1, 2006

DRAWN BY: NSB  
CHECKED BY: DA

**TYLIN** INTERNATIONAL