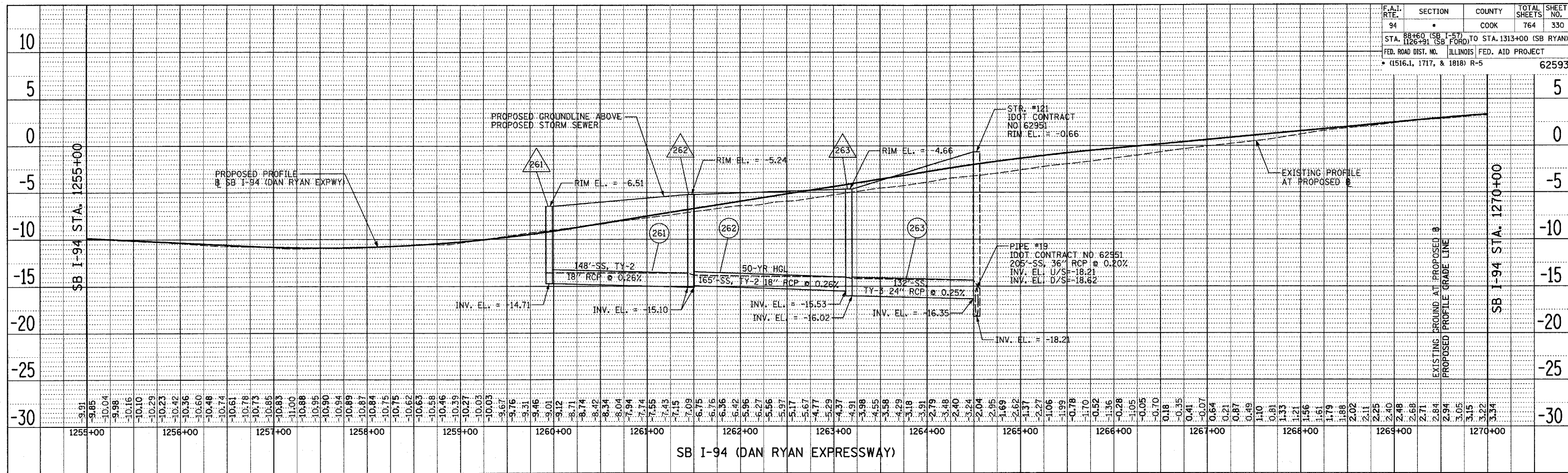
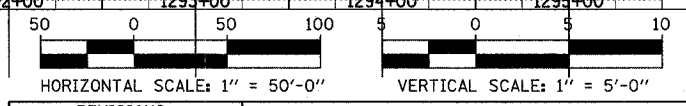
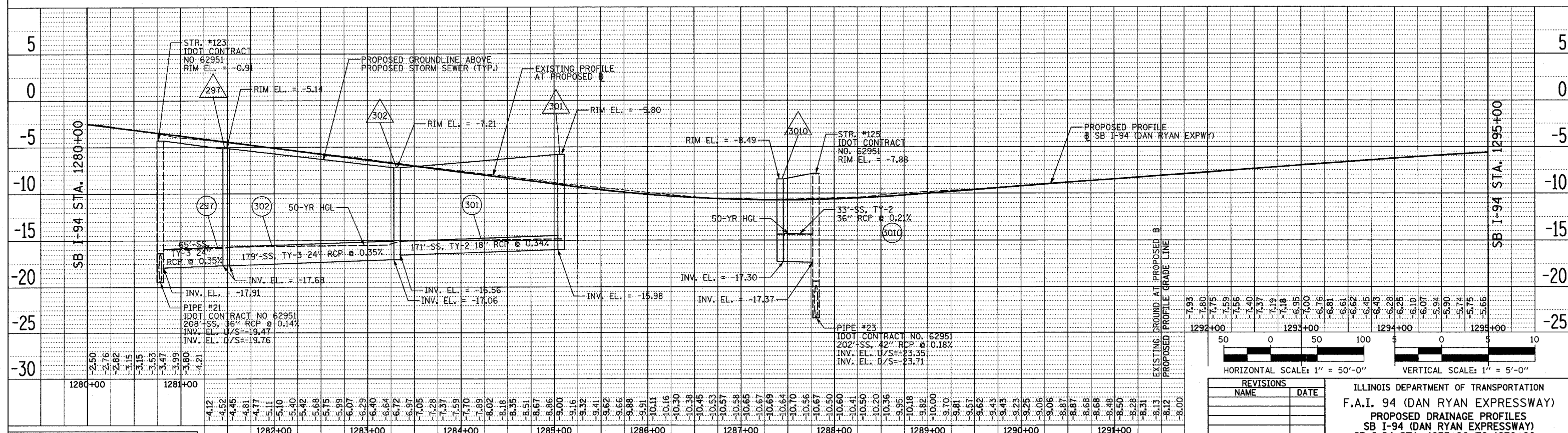


DATE: \_\_\_\_\_  
 BY: \_\_\_\_\_  
 PLAN: \_\_\_\_\_  
 CHECKED: \_\_\_\_\_  
 NO. \_\_\_\_\_  
 DATE: \_\_\_\_\_  
 BY: \_\_\_\_\_  
 PLAN: \_\_\_\_\_  
 CHECKED: \_\_\_\_\_  
 NO. \_\_\_\_\_



DATE: \_\_\_\_\_  
 BY: \_\_\_\_\_  
 PLAN: \_\_\_\_\_  
 CHECKED: \_\_\_\_\_  
 NO. \_\_\_\_\_  
 DATE: \_\_\_\_\_  
 BY: \_\_\_\_\_  
 PLAN: \_\_\_\_\_  
 CHECKED: \_\_\_\_\_  
 NO. \_\_\_\_\_



REVISIONS	
NAME	DATE

ILLINOIS DEPARTMENT OF TRANSPORTATION  
 F.A.I. 94 (DAN RYAN EXPRESSWAY)  
 PROPOSED DRAINAGE PROFILES  
 SB I-94 (DAN RYAN EXPRESSWAY)  
 SB I-94 STA. 1255+00 TO 1270+00  
 AND STA. 1280+00 TO 1295+00  
 SHEET 4 OF 7  
 SCALE: 1"=50' HORIZ.  
 1"=5' VERT.  
 DATE: MARCH 1, 2006  
 DRAWN BY: RJD/NSB  
 CHECKED BY: DA

TYLIN INTERNATIONAL

SB I-94 (DAN RYAN EXPRESSWAY)