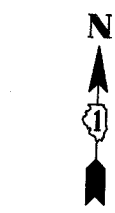
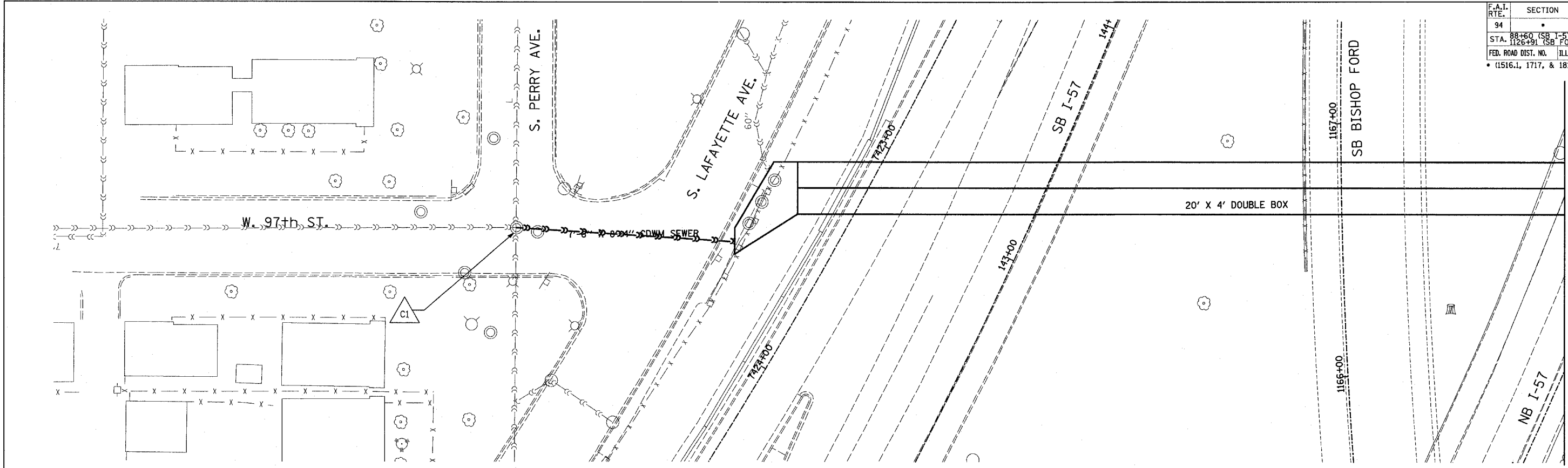
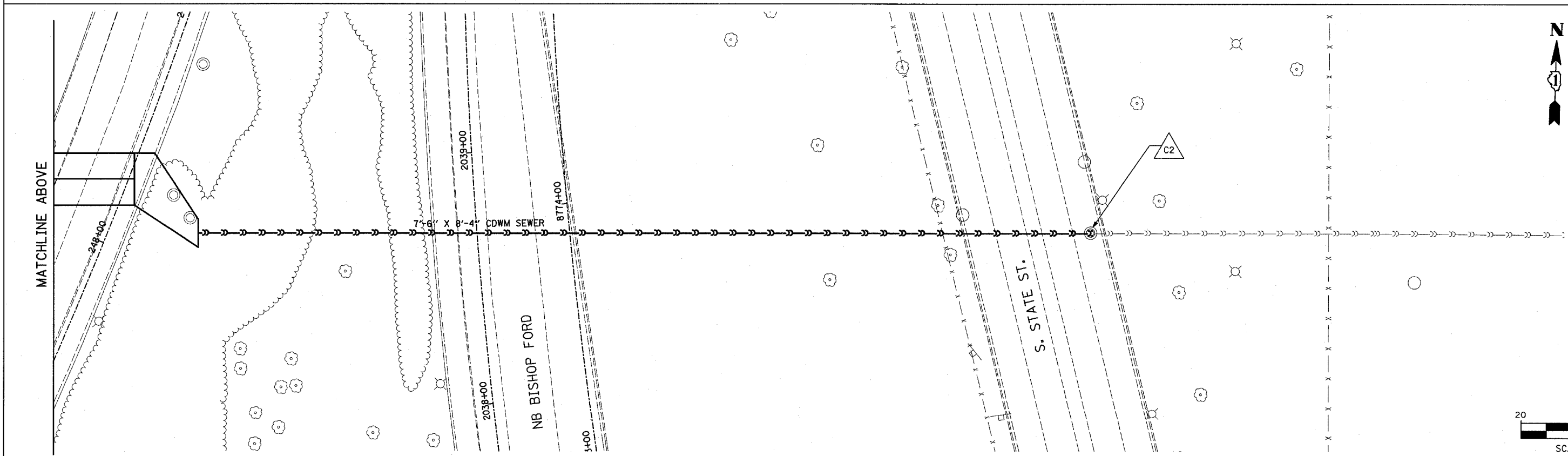


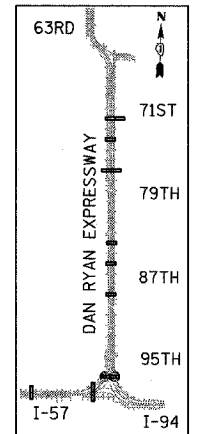
F.A.I. RTE.	SECTION	COUNTY	TOTAL SHEETS	SHEET NO.
94	*	COOK	764	362
STA. 88+60 (SB I-57) TO STA. 1313+00 (SB RYAN)				
FED. ROAD DIST. NO. ILLINOIS FED. AID PROJECT				
* (1516.1, 1717, & 1818) R-5 62593				



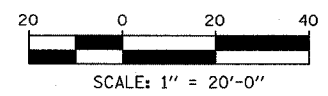
MATCHLINE BELOW



MATCHLINE ABOVE



LOCATION MAP



TYLIN INTERNATIONAL

- LEGEND:**
- EXISTING COMBINED SEWER
 - EXISTING COMBINED SEWER TO BE TELEVIEWED
 - MANHOLE STRUCTURE NO.

REVISIONS	
NAME	DATE

ILLINOIS DEPARTMENT OF TRANSPORTATION
F.A.I. 94 (DAN RYAN EXPRESSWAY)
SEWER TELEVIEWING
97TH STREET CROSSING

SCALE: 1"=20'-0"
DATE: MARCH 1, 2006

DRAWN BY: MPG
CHECKED BY: TGB