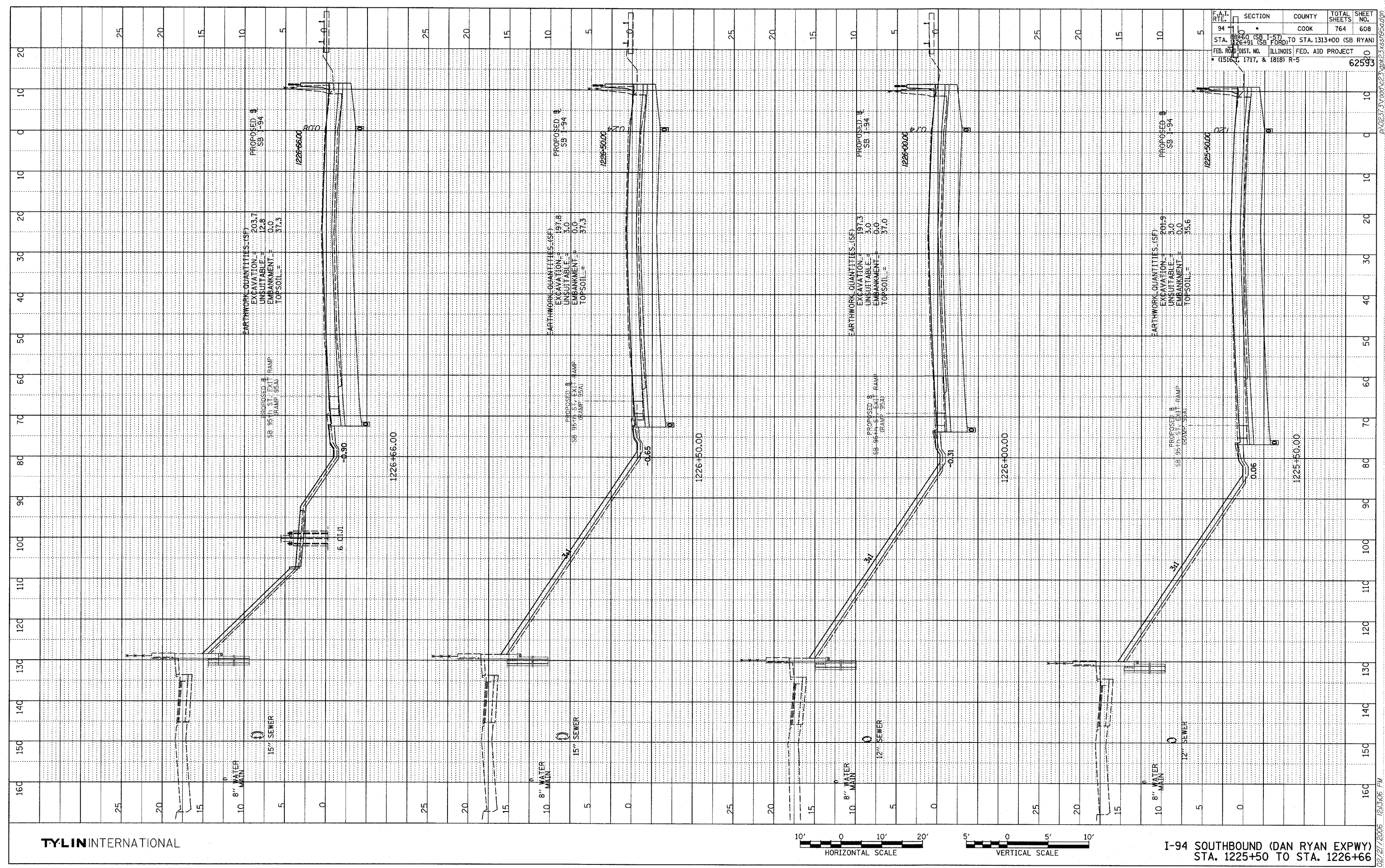


PROFILE SURVEYED  
 PLOTTED & CHECKED  
 NOTE BOOK  
 NO. \_\_\_\_\_  
 STRUCTURE NOTATIONS CHECKED  
 DATE  
 BY

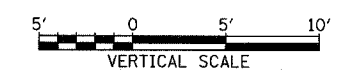
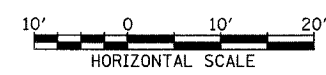


F.A.I. RTE.	SECTION	COUNTY	TOTAL SHEETS	SHEET NO.
94	10	COOK	764	608

STA. 1225+00 (SB I-57) TO STA. 1313+00 (SB RYAN)  
 STA. 1225+00 (SB I-57) TO STA. 1225+00 (SB FORD)  
 FED. ROAD DIST. NO. ILLINOIS FED. AID PROJECT  
 (1516, 1717, & 1818) R-5

02/27/2006 12:53:06 PM  
 I-94 SOUTHBOUND (DAN RYAN EXPWY)  
 STA. 1225+50 TO STA. 1226+66

TYLIN INTERNATIONAL



I-94 SOUTHBOUND (DAN RYAN EXPWY)  
 STA. 1225+50 TO STA. 1226+66