

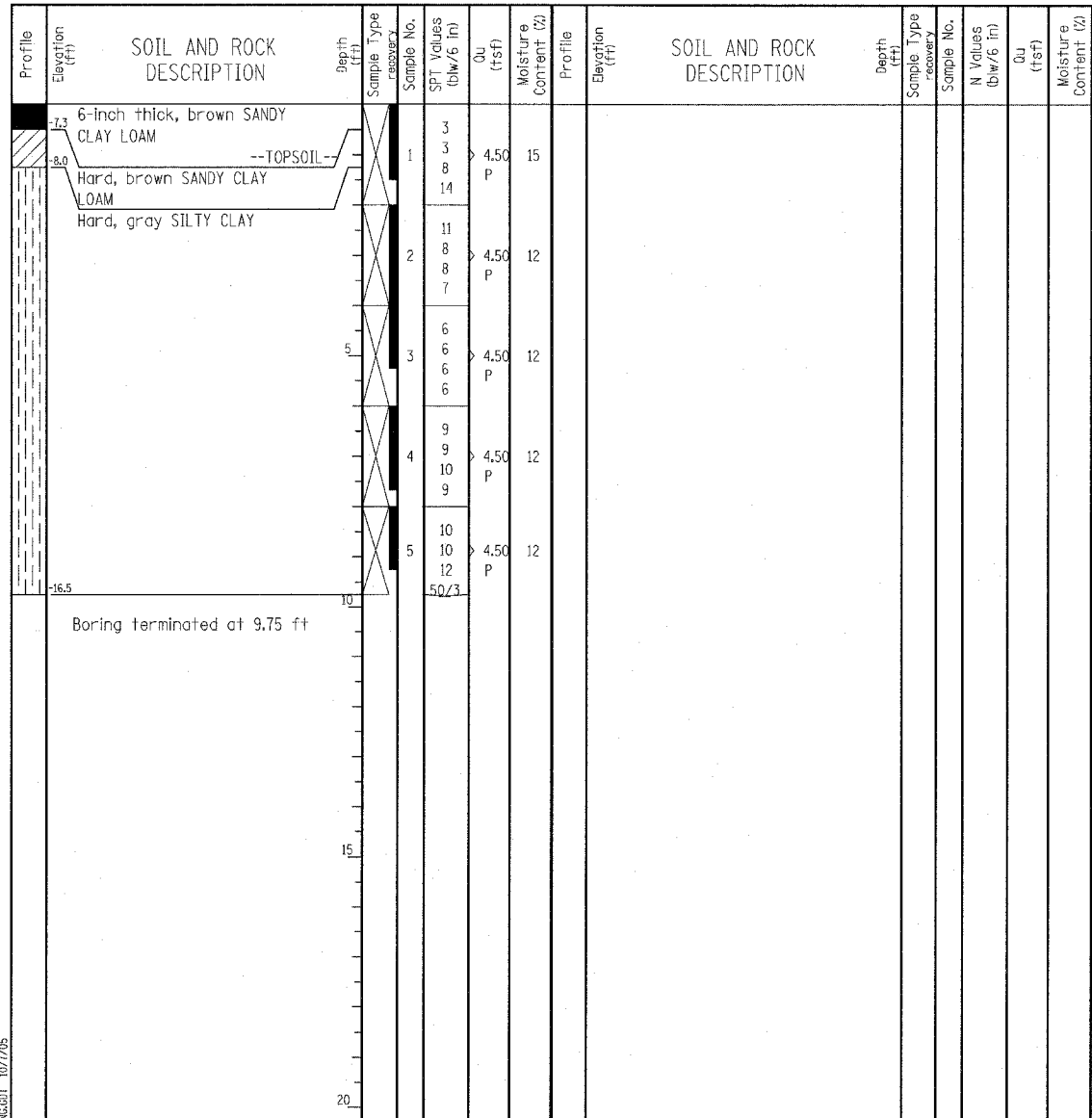
Wang Engineering, INC.
Consulting Geotechnical and Environmental Engineers
wangeng3@wangeng.com
1145 Main Street
Lombard, IL 60148
Telephone: 630 953-9928
Fax: 630 953-9938

BORING LOG P-143 Page 1 of 1

WEI Job No.: 414-07-01

Datum: CCD
Elevation: -6.76 ft
North: 1844925.81 ft
East: 1177616.54 ft
Station: 1235+44.72
Offset: 59.58' LT

Client: T. Y. LIN International
Project: Dan Ryan Improvements; IDOT No. D-91-421-01
Location: From 95th Street to South of 69th Street



| GENERAL NOTES | | | | WATER LEVEL DATA | | | |
|---------------------|---|-------------------|------------|---|----|-----|--|
| Begin Drilling | 06-25-2003 | Complete Drilling | 06-25-2003 | While Drilling | ▽ | DRY | |
| Drilling Contractor | Patrick Drilling | Drill Rig | CME 75 TMR | At Completion of Drilling | ▽ | DRY | |
| Driller | J&B | Logger | Y. Shiu | Time After Drilling | NA | | |
| Checked by | MLS | | | Depth to Water | ▽ | NA | |
| Drilling Method | 3.25" ID. HSA; Boring backfilled with bentonite upon completion | | | The stratification lines represent the approximate boundary between soil types; the actual transition may be gradual. | | | |

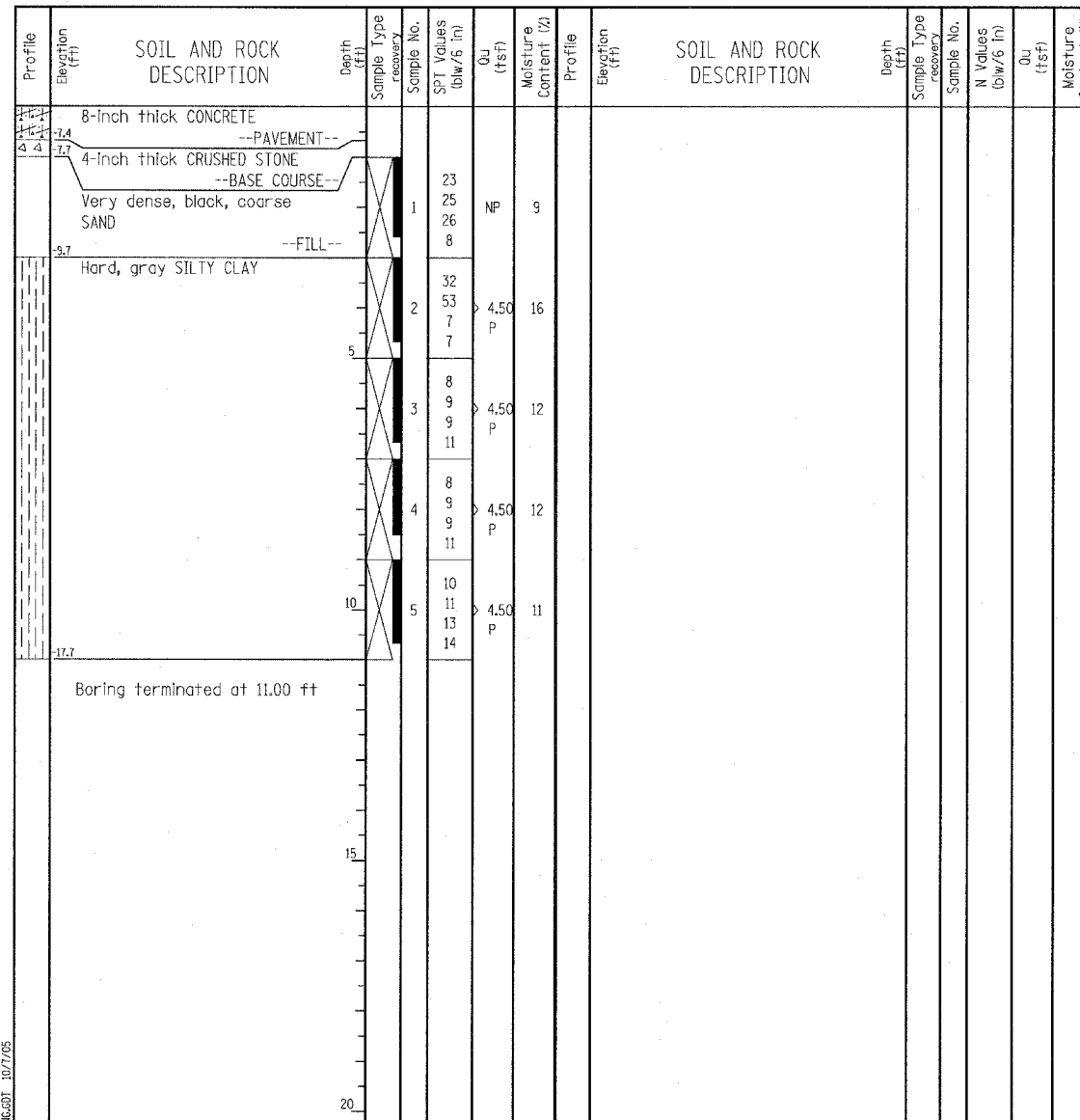
Wang Engineering, INC.
Consulting Geotechnical and Environmental Engineers
wangeng3@wangeng.com
1145 Main Street
Lombard, IL 60148
Telephone: 630 953-9928
Fax: 630 953-9938

BORING LOG P-144 Page 1 of 1

WEI Job No.: 414-07-01

Datum: CCD
Elevation: -6.73 ft
North: 1844710.34 ft
East: 1177623.99 ft
Station: 1233+29.13
Offset: 58.30' LT

Client: T. Y. LIN International
Project: Dan Ryan Improvements; IDOT No. D-91-421-01
Location: From 95th Street to South of 69th Street



| GENERAL NOTES | | | | WATER LEVEL DATA | | | |
|---------------------|---|-------------------|------------|---|----|-----|--|
| Begin Drilling | 06-25-2003 | Complete Drilling | 06-25-2003 | While Drilling | ▽ | DRY | |
| Drilling Contractor | Patrick Drilling | Drill Rig | CME 75 TMR | At Completion of Drilling | ▽ | DRY | |
| Driller | J&B | Logger | Y. Shiu | Time After Drilling | NA | | |
| Checked by | MLS | | | Depth to Water | ▽ | NA | |
| Drilling Method | 3.25" ID. HSA; Boring backfilled with bentonite upon completion | | | The stratification lines represent the approximate boundary between soil types; the actual transition may be gradual. | | | |

LEGEND

NP NON-PLASTIC
B BULGE FAILURE
S SHEAR FAILURE
P POCKET PENETROMETER

TYLIN INTERNATIONAL

| REVISIONS | |
|-----------|------|
| NAME | DATE |
| | |
| | |
| | |
| | |
| | |
| | |
| | |
| | |
| | |

ILLINOIS DEPARTMENT OF TRANSPORTATION
F.A.I. 94 (DAN RYAN EXPRESSWAY)
SOIL BORINGS P-143 & P-144

SCALE: N.T.S. DRAWN BY: MPG
DATE: MARCH 1, 2006 CHECKED BY: JPM