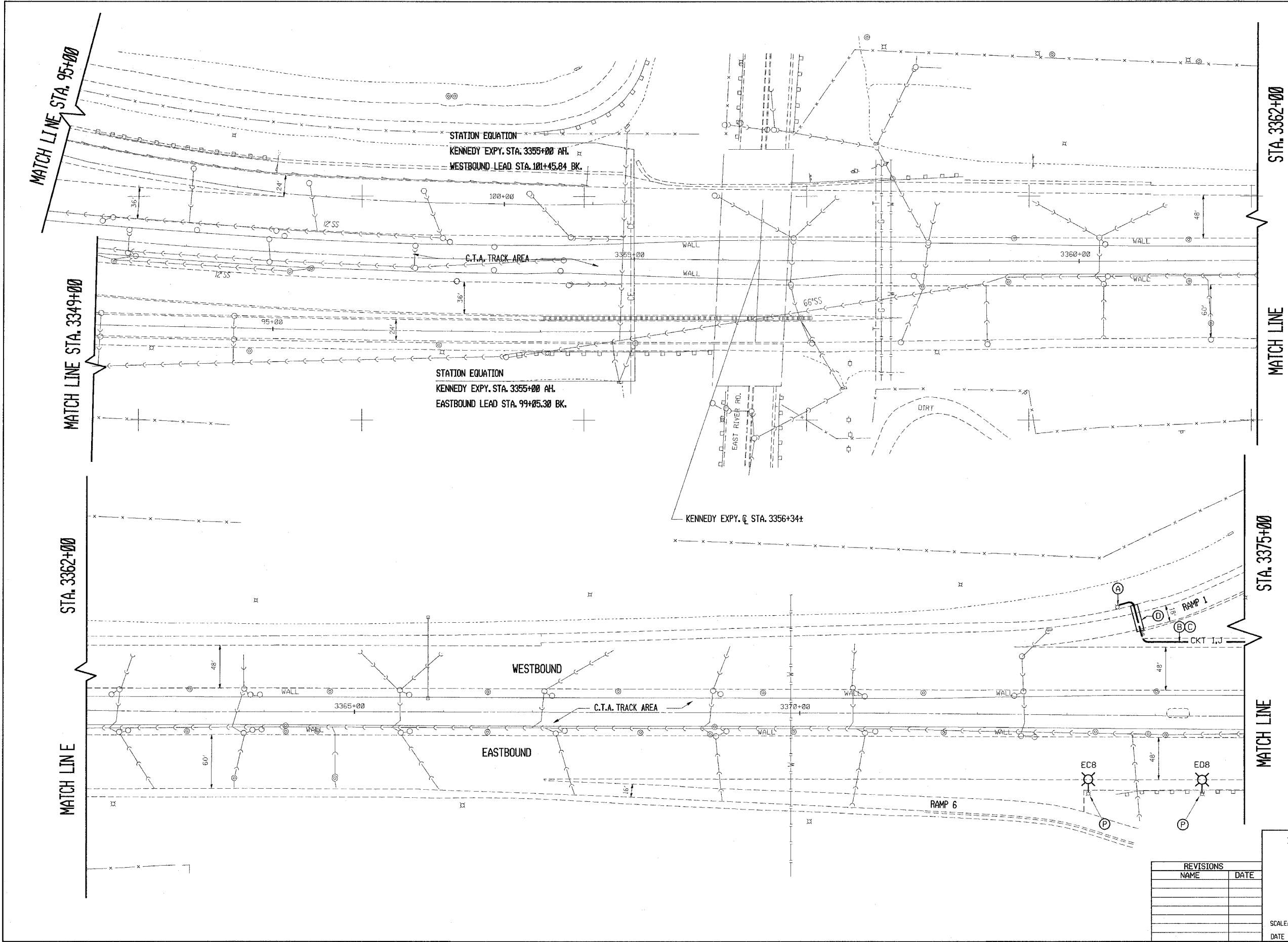


F.A.I. RTE.	SECTION	COUNTY	TOTAL SHEETS	SHEET NO.
90	*	COOK	81	14

STA. 3349+00 TO STA. 3375+00

FED. ROAD DIST. NO. ILLINOIS FED. AID PROJECT

(1012, 1214, 1415, & 1517) RS-3



ILLINOIS DEPARTMENT OF TRANSPORTATION

F.A.I. ROUTE 90
KENNEDY EXPRESSWAY
EXISTING CONDITIONS
STA. 3349+00 TO STA. 3375+00

SCALE: HORIZ. SCALE IN FEET

DATE 9/10/86 DRAWN BY CAD0 CHECKED BY

REVISIONS	
NAME	DATE