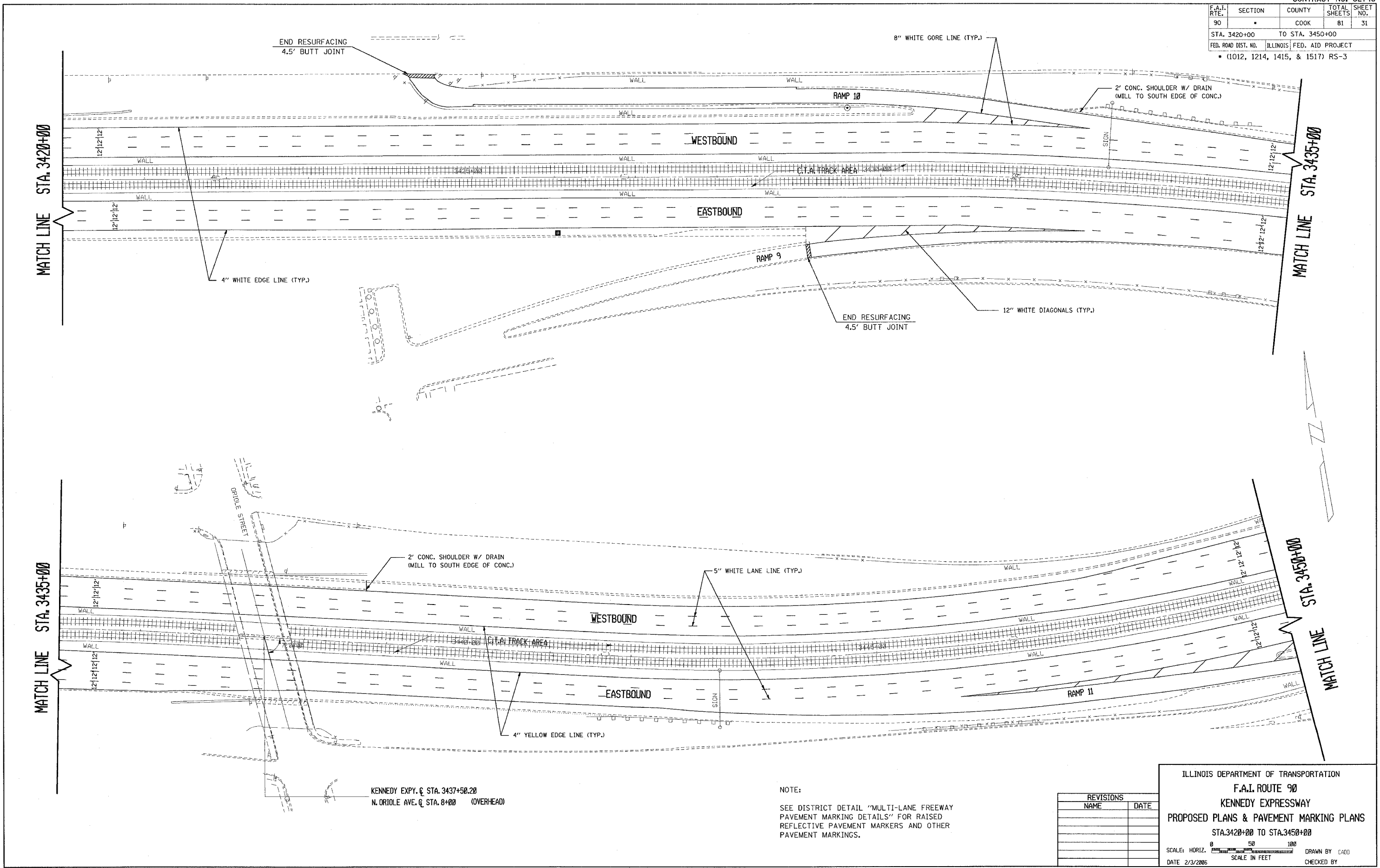


F.A.I. RTE.	SECTION	COUNTY	TOTAL SHEETS	SHEET NO.
90	*	COOK	81	31
STA. 3420+00		TO STA. 3450+00		
FED. ROAD DIST. NO.		ILLINOIS FED. AID PROJECT		
* (1012, 1214, 1415, & 1517) RS-3				



KENNEDY EXPY. @ STA. 3437+50.20
 N. ORIOLE AVE. @ STA. 8+00 (OVERHEAD)

NOTE:
 SEE DISTRICT DETAIL "MULTI-LANE FREEWAY PAVEMENT MARKING DETAILS" FOR RAISED REFLECTIVE PAVEMENT MARKERS AND OTHER PAVEMENT MARKINGS.

REVISIONS	
NAME	DATE

ILLINOIS DEPARTMENT OF TRANSPORTATION
 F.A.I. ROUTE 90
 KENNEDY EXPRESSWAY
 PROPOSED PLANS & PAVEMENT MARKING PLANS
 STA. 3420+00 TO STA. 3450+00

SCALE: HORIZ. SCALE IN FEET
 DATE 2/3/2006 DRAWN BY CAD0 CHECKED BY