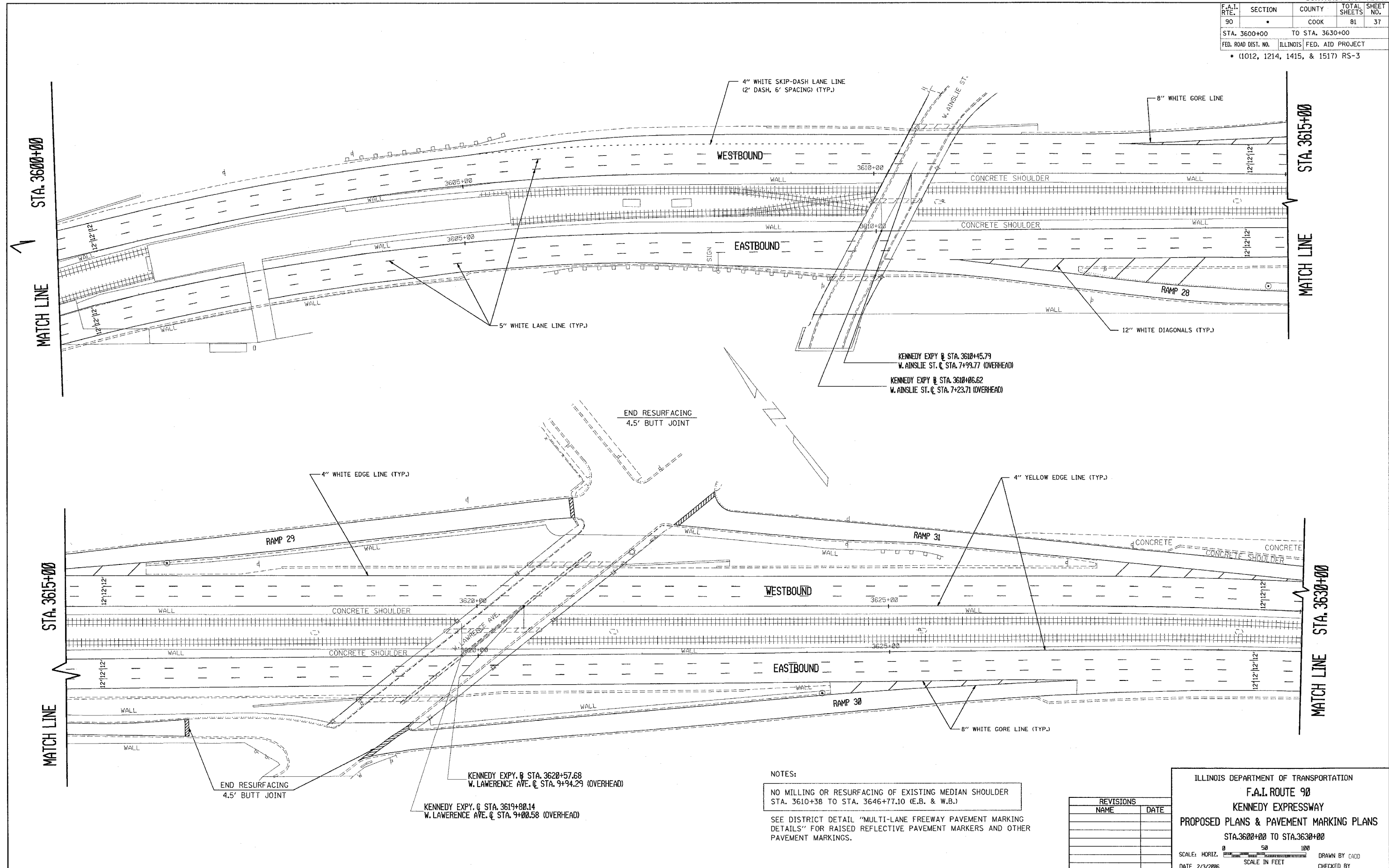


F.A.I. RTE.	SECTION	COUNTY	TOTAL SHEETS	SHEET NO.
90		COOK	81	37
STA. 3600+00 TO STA. 3630+00		ILLINOIS FED. AID PROJECT		
• (1012, 1214, 1415, & 1517) RS-3				



END RESURFACING
4.5' BUTT JOINT

END RESURFACING
4.5' BUTT JOINT

NOTES:
NO MILLING OR RESURFACING OF EXISTING MEDIAN SHOULDER
STA. 3610+38 TO STA. 3646+77.10 (E.B. & W.B.)

SEE DISTRICT DETAIL "MULTI-LANE FREEWAY PAVEMENT MARKING
DETAILS" FOR RAISED REFLECTIVE PAVEMENT MARKERS AND OTHER
PAVEMENT MARKINGS.

REVISIONS	
NAME	DATE

ILLINOIS DEPARTMENT OF TRANSPORTATION
F.A.I. ROUTE 90
KENNEDY EXPRESSWAY
PROPOSED PLANS & PAVEMENT MARKING PLANS
STA. 3600+00 TO STA. 3630+00

SCALE: HORIZ. SCALE IN FEET
 DATE 2/3/2006 DRAWN BY CAD CHECKED BY