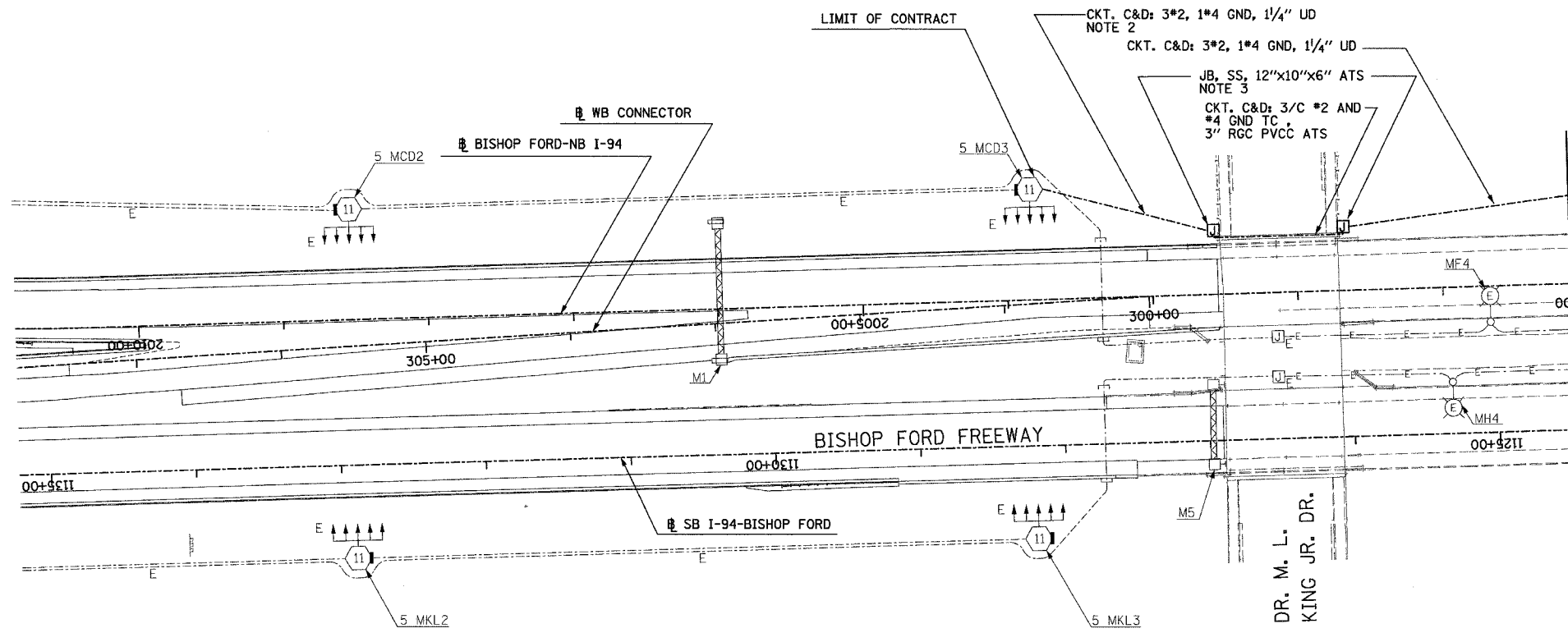
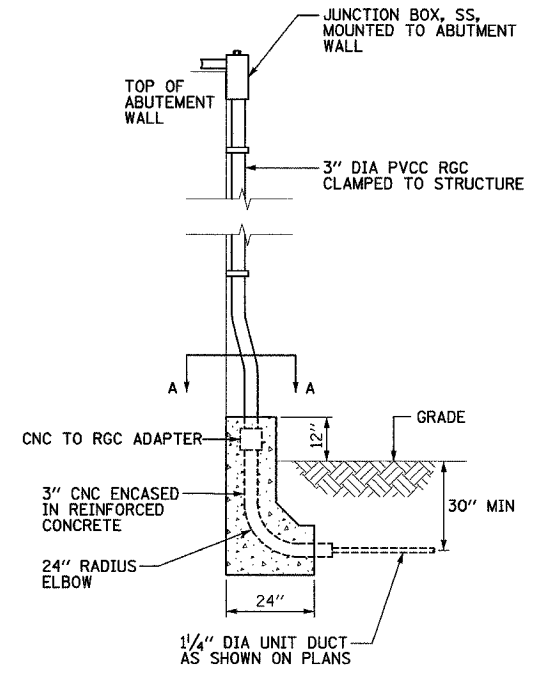


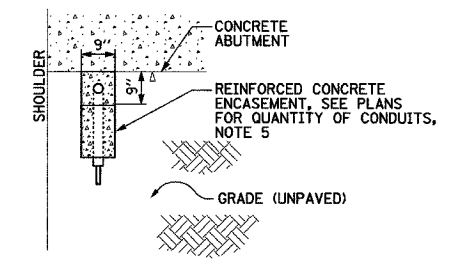
F.A.I. RTE.	SECTION	COUNTY	TOTAL SHEETS	SHEET NO.
94		COOK	36	28
STA. 1135+22		TO STA. 1124+50		
FED. ROAD DIST. NO.	ILLINOIS	FED. AID PROJECT		
• 2005-014L		62937		



MATCH LINE STA. 1124+50
SEE SHEET RL-08A



JUNCTION BOX MOUNTING DETAIL
(NOTE 4)



DETAIL A-A
SCALE: 1/2" = 1'-0"



- LEGEND**
- HIGH MAST LIGHT TOWERS (PROVIDED UNDER SEPARATE CONTRACT)
 - EXISTING LIGHTING UNIT TO REMAIN
 - EXISTING JUNCTION BOX (PROVIDED UNDER THE SEPARATE CONTRACT)
 - EXISTING LIGHTING CIRCUIT
 - JUNCTION BOX; TYPE AND SIZE AS INDICATED ON PLANS
 - RACEWAY OR DIRECT BURIAL CABLE UNDERGROUND WITHOUT ENCASEMENT

- NOTES**
1. UNLESS NOTED OTHERWISE ALL ITEMS AND WORK SHOWN IN HEAVY LINE WEIGHT ON THIS DRAWING ARE PROPOSED NEW ITEMS OF WORK.
 2. SPLICE UNIT DUCT CABLES TO FEEDERS PROVIDED UNDER SEPARATE CONTRACT IN HIGH MAST TOWER.
 3. MOUNT JUNCTION BOX TO ABUTMENT IN ACCORDANCE WITH DETAIL SHOWN ON THIS SHEET.
 4. SECURE THE CONDUIT WITH PVC COATED CONDUIT CLAMPS AT 5'-0" INTERVALS FOR LATERALS AND WITHIN 2'-0" MAXIMUM FROM ANY JUNCTION BOX OR CHANGE IN DIRECTION. ALL PVC COATED CONDUIT CLAMPS WILL BE INCLUDED WITH THE COST OF THE "CONDUIT ATTACHED TO STRUCTURE 3" DIA., GALVANIZED STEEL, PVC COATED" PAY ITEM.
 5. THE LAST FOUR FEET OF UNIT DUCT(S) IN GRADE AND ONE ADDITIONAL FOOT OF UNIT DUCT(S) ABOVE GRADE SHALL BE ENCASED IN REINFORCED CONCRETE AS SHOWN. THE CONCRETE ENCASED UNIT DUCT SHALL BE INCLUDED FOR PAYMENT UNDER THE APPROPRIATE "CONDUIT ENCASED, REINFORCED CONCRETE" PAY ITEM. ALLOW FIVE FEET FOR EACH LOCATION.

SINGH 300 W. ADAMS ST.
CHICAGO, IL 60606
SINGH & ASSOCIATES, INC. TEL: (312) 629-0240
CONSULTING ENGINEERS FAX: (312) 629-8449

REVISIONS	
NAME	DATE

ILLINOIS DEPARTMENT OF TRANSPORTATION
F.A.I. 94 (DAN RYAN EXPRESSWAY)

ROADWAY LIGHTING PLANS
PROPOSED IMPROVEMENTS

SCALE: 1"=50' DRAWN BY: VG
DATE: JANUARY 13, 2006 CHECKED BY: TM

2D/RL-08
1/11/2006 2:53:22 PM