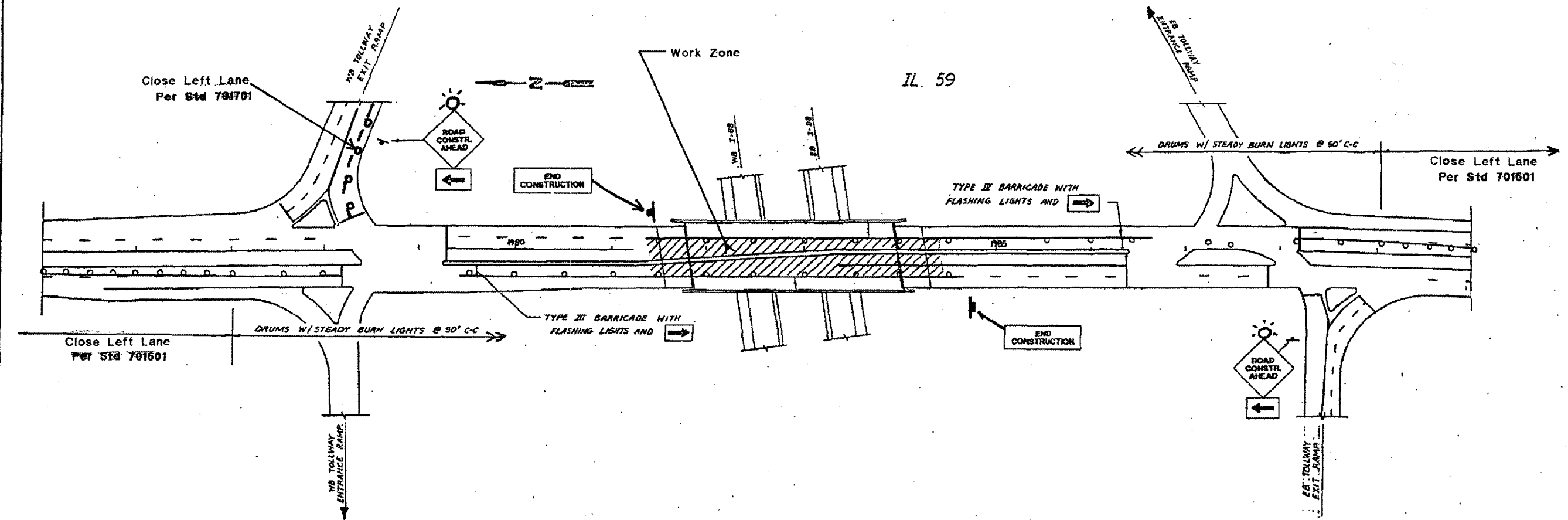


SECTION	COUNTY	TOTAL SHEETS	NO.
E-1-14-1-2	DUPAGE	12	6

FED. ROAD DIST. NO. 1 ILLINOIS FED. AID PROJECT



- NOTES:**
- TWO (2) ARROWBOARDS SHALL BE USED IN EACH DIRECTION AS DIRECTED BY THE ENGINEER.
  - THIS DETAIL SHALL BE USED ALONG WITH AND INCLUDED IN THE COST OF TRAFFIC CONTROL AND PROTECTION - STANDARD 701601

REVISIONS	
NAME	DATE

ILLINOIS DEPARTMENT OF TRANSPORTATION  
**IL 59 OVER I-88 BRIDGE**  
**TRAFFIC CONTROL PLAN**  
**STAGE II (SN 022-9900)**

SCALE: NONE  
 DATE: 2/10/06  
 DRAWN BY: SHB  
 CHECKED BY:

3/1/2006  
 c:\p\o\lects\81011058\01011058.dwg