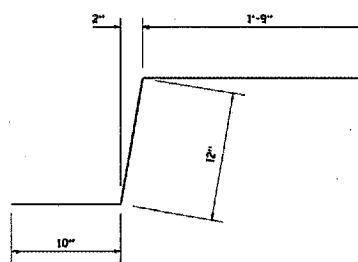
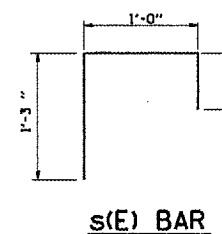
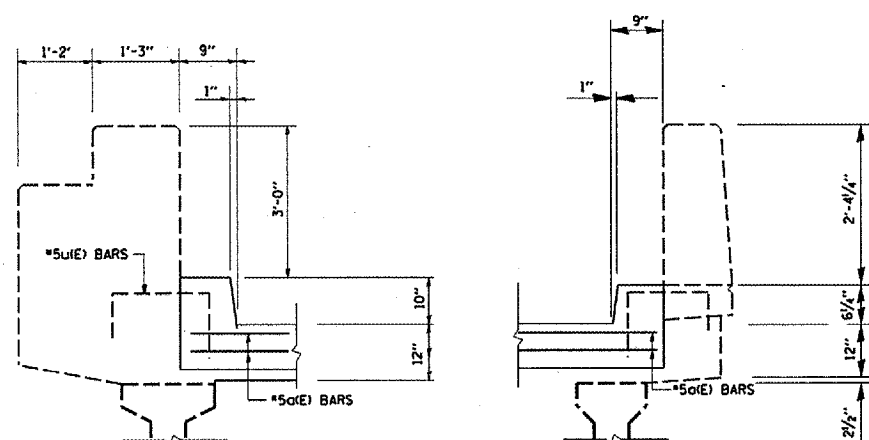
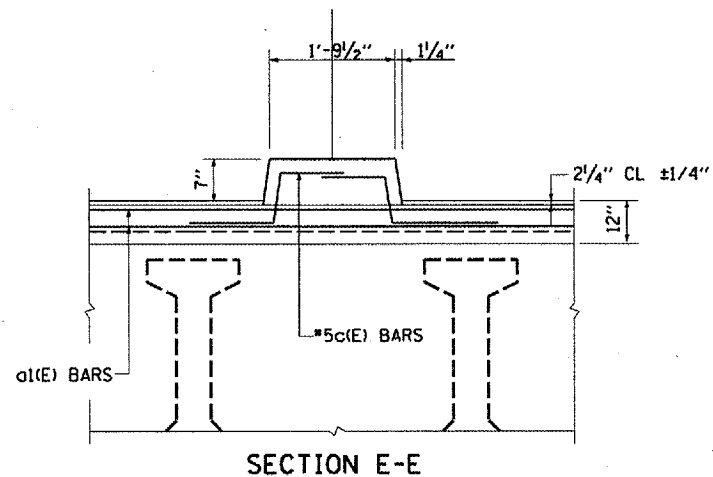


F.A.P. RTE.	SECTION	COUNTY	TOTAL SHEETS	SHEET NO.
338	E-1-14-1-2	DUPAGE	12	9
STA.	TO STA.			
FED. ROAD DIST. NO.	ALIGNED	FED. AID PROJECT		

CONTRACT 62968

BILL OF MATERIAL

BAR	NO.	SIZE	LENGTH	SHAPE
a(E)	6	#5	15'-0"	—
a1(E)	12	#5	21'-6"	—
a2(E)	12	#5	14'-2"	—
CE)	16	#5	3'-7"	—
h(E)	8	#6	15'-0"	—
h1(E)	16	#6	21'-9"	—
h2(E)	8	#6	14'-2"	—
s(E)	148	#5	2'-7"	└
ITEM		UNIT	QUANTITY	
REINFORCEMENT BARS, EPOXY COATED		POUND	1780	
CONCRETE REMOVAL		CU. YD.	14.2	
CONCRETE SUPERSTRUCTURE		CU. YD.	14.2	
BAR SPLICERS		EACH	28	
PREFORMED JOINT STRIP				
SEAL		FOOT	149	



NOTES:

EXISTING REINFORCEMENT BARS EXTENDING INTO NEW CONSTRUCTION SHALL BE CLEANED, STRAIGHTENED, AND INCORPORATED INTO THE NEW CONCRETE. THE CONTRACTOR SHALL EXERCISE CAUTION WHEN REMOVING EXISTING CONCRETE SO AS TO NOT DAMAGE EXISTING REINFORCEMENT BARS.

BARS INDICATED THUS 3X2 #5 INDICATES 3 LINES OF BARS WITH 2 LENGTHS PER LINE

(E) INDICATES EPOXY COATED

REVISIONS	
NAME	DATE

ILLINOIS DEPARTMENT OF TRANSPORTATION
 IL 47 OVER I-88 BRIDGE
 JOINT DETAILS
 SN 022-9900

SCALE: NONE
 DATE: 2/10/06

DRAWN BY: SHB
 CHECKED BY: