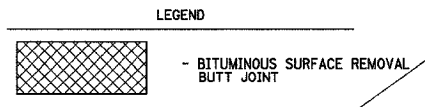
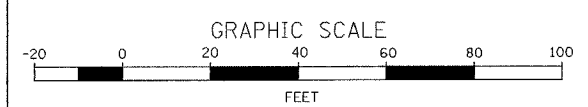
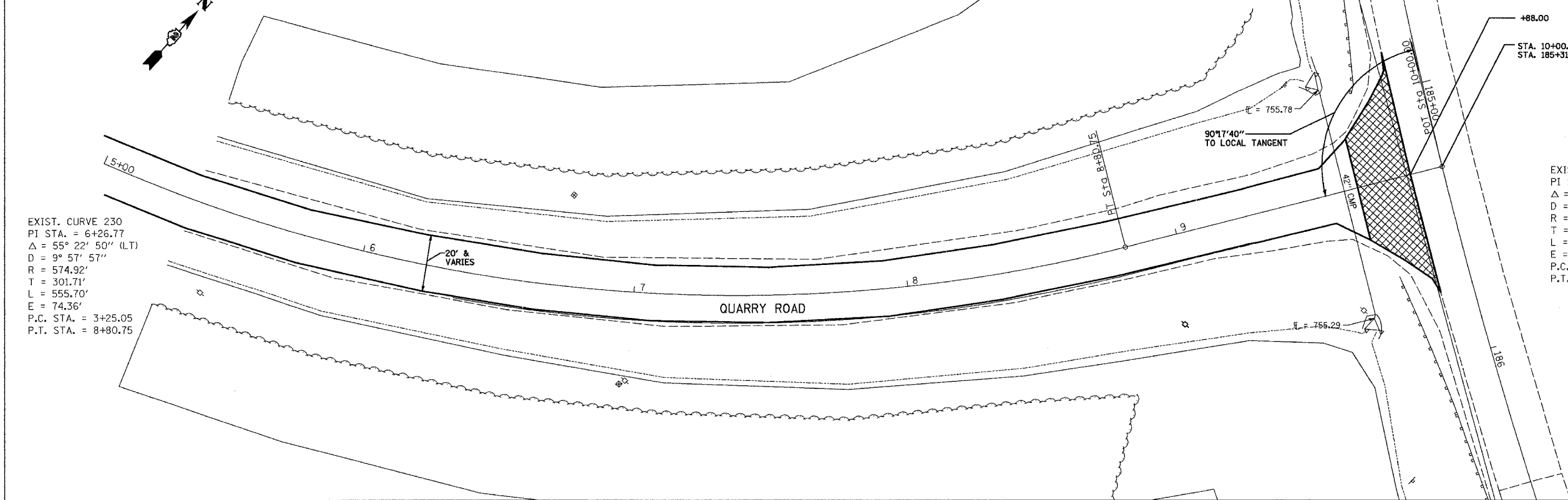


CONTRACT NO. 64858				
F.A.P. RTE.	SECTION	COUNTY	TOTAL SHEETS	SHEET NO.
553	125VBR-1	DEKALB	55	14
STA. 5+00		TO STA. 10+00		
FED. ROAD DIST. NO.	ILLINOIS	FED. AID PROJECT		



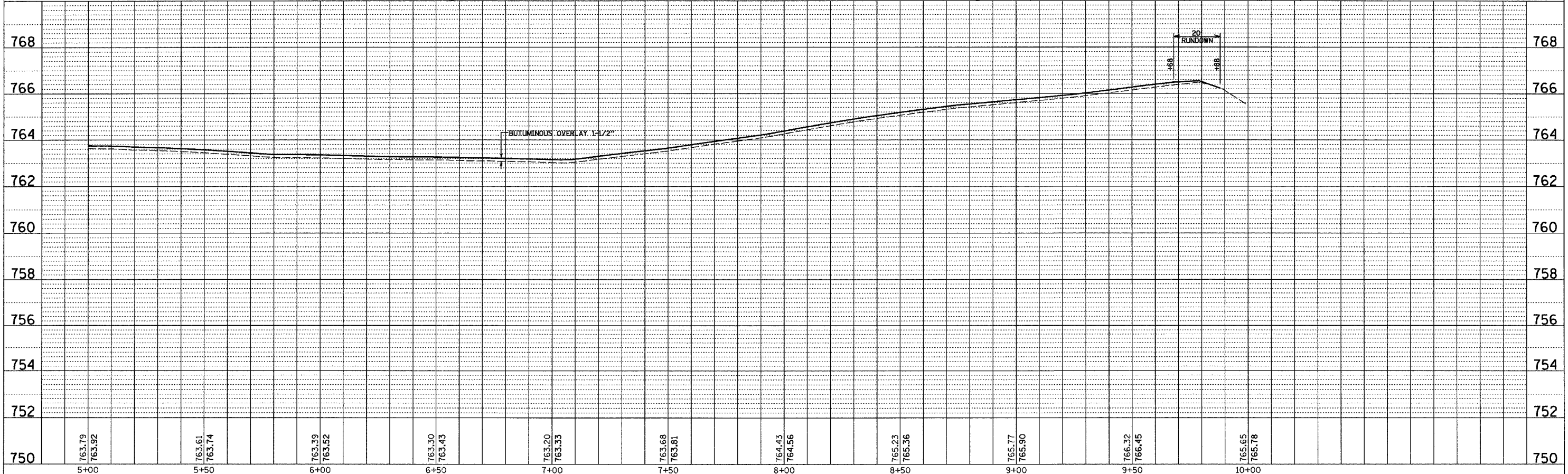
PLAN	SURVEYED	DATE
	PLOTTED	
	NOTED	
	BY	
	NO.	



EXIST. CURVE 230
 PI STA. = 6+26.77
 $\Delta = 55^\circ 22' 50''$ (LT)
 $D = 9^\circ 57' 57''$
 $R = 574.92'$
 $T = 301.71'$
 $L = 555.70'$
 $E = 74.36'$
 P.C. STA. = 3+25.05
 P.T. STA. = 8+80.75

EXIST. CURVE 220
 PI STA. = 187+30.73
 $\Delta = 67^\circ 32' 43''$ (LT)
 $D = 2^\circ 59' 53''$
 $R = 1,911.13'$
 $T = 1,278.07'$
 $L = 2,253.01'$
 $E = 387.97'$
 P.C. STA. = 174+52.65
 P.T. STA. = 197+05.67

PROFILE	SURVEYED	DATE
	PLOTTED	
	NOTED	
	BY	
	NO.	



PLOT DATE = 12/05
 FILE NAME = PPS-DRT
 PLOT SCALE = 1" = 20'
 USER NAME = CHMS

QUARRY ROAD