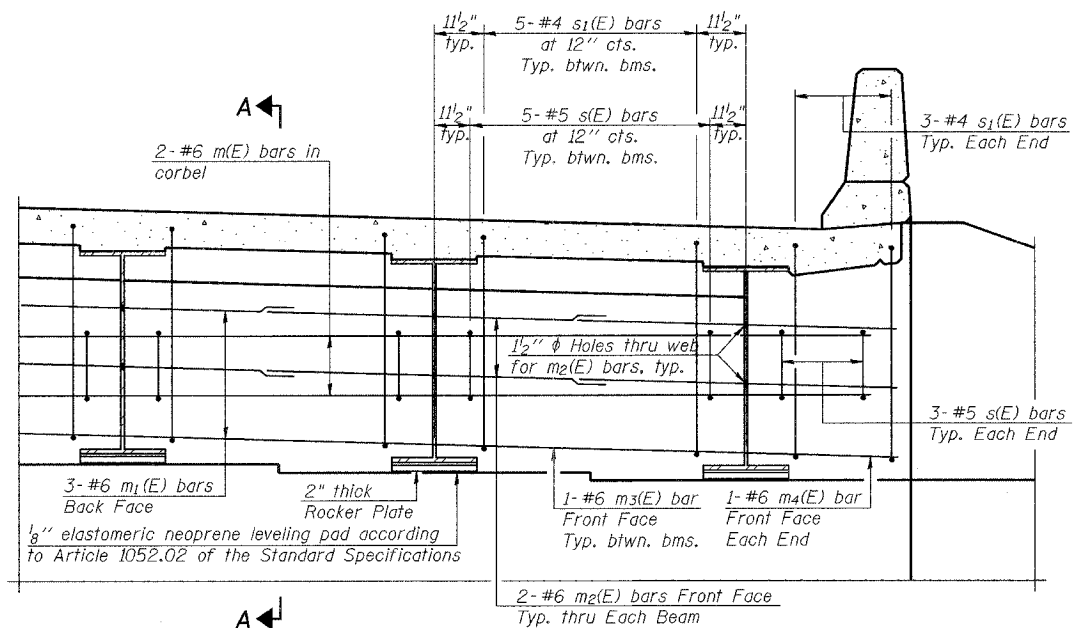


STATE OF ILLINOIS
DEPARTMENT OF TRANSPORTATION

ROUTE NO. FAP 553	SECTION 125 VBR-1	COUNTY DEKALB	SHEET NO. 55	SHEET NO. 21	SHEET NO. 6 20 SHEETS
FED. ROAD DIST. NO. 7		ILLINOIS	FED. AID PROJECT-		

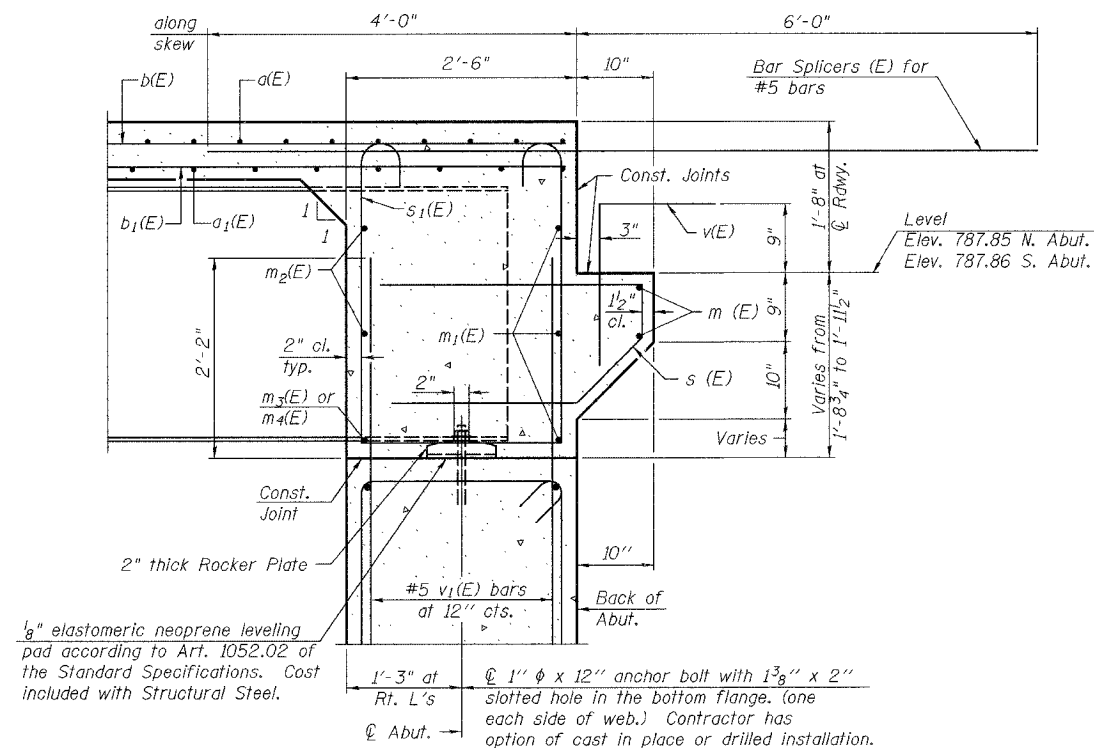
Contract #64858



DIAPHRAGM ELEVATION AT ABUTMENT

Notes:
Reinforcement bars in diaphragm are billed with superstructure on sheet 5 of 20.
Concrete in diaphragm is included with Concrete Superstructure on sheet 5 of 20.
For details of bars s(E) & s₁(E) see sheet 5 of 20.
The s(E) and s₁(E) bars shall be placed parallel to the beams. Spacing for these bars shall be at right angles to the beams.
For anchor bolt details see sheet 13 of 20.

MIN. BAR LAP
#6 bar = 2'-9"



SECTION A-A

Dimensions at right angles to abutment, except as shown.

SUPERSTRUCTURE DETAILS
IL RTE 72 OVER
IOWA CHICAGO & EASTERN RAILROAD
FAP ROUTE 553
SECTION 125VBR-1
DEKALB COUNTY
STA. 144+14.40
SN 019-0047

DESIGNED	JKC
CHECKED	JDA
DRAWN	ARR
CHECKED	JKC

SI-DSI

10-22-04